

# Bike Security 2025 Annual Update

Bicycle & Active Transportation Committee  
March 19, 2026



# Bike Security Update

## Bicycle Advisory Committee

Prepared by: Scott Kirkpatrick  
Deputy Director Safety & Security



# Purpose for Tonight:

- To report total number of bike thefts
  - To go over total crimes reported
  - To confirm how many arrest made
- 
- To compare yearly Historicals
  - To review recovery of stolen bikes

# Downtown SF to Gilroy



# 2025 By the Numbers

**Total Reported Bike Thefts: 102**

- **Onboard: 83**
- **At Stations: 19**
- **Bike related arrests: 8**
- **Recoveries: 11**

**Bike theft crimes make up less than 15.9% of total report crimes**

# 2024 By the Numbers

**Total Reported Bike Thefts: 47**

- **Onboard: 27**
- **At Stations: 20**
- **Bike related arrests: 0**
- **Recoveries: 3**

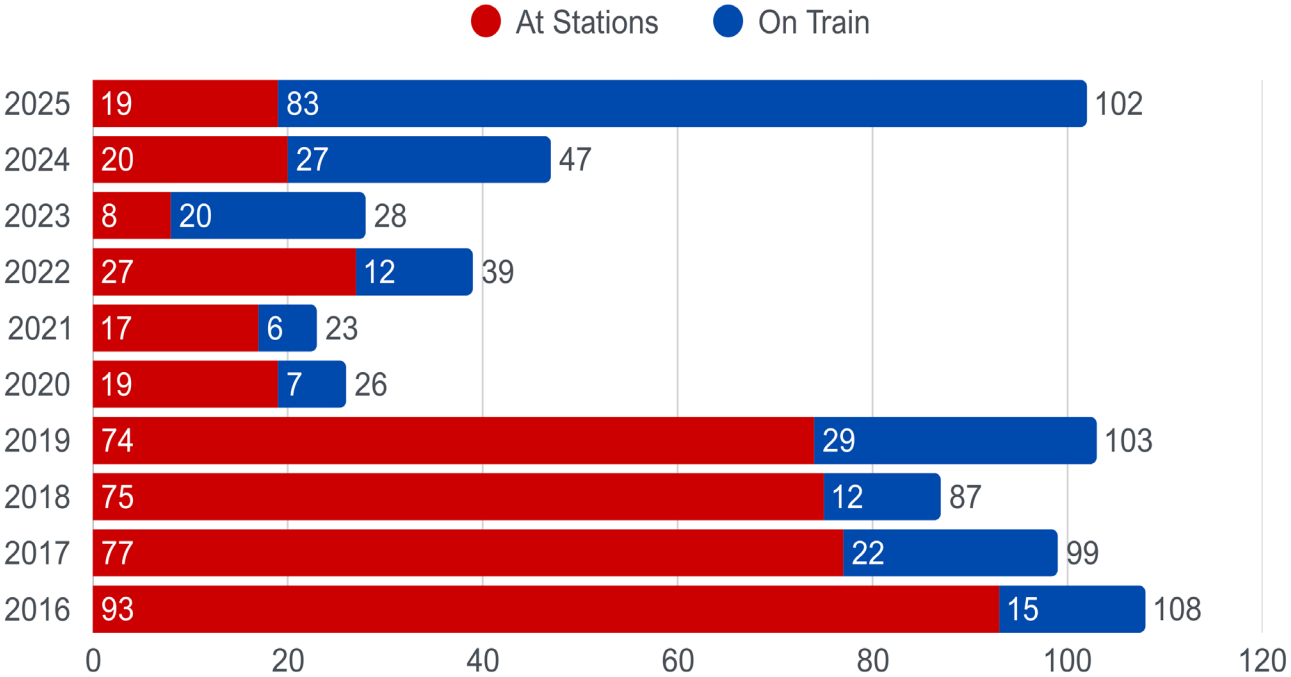
**Bike theft crimes make up 10.3% of total report crimes**

# 2025 Historicals

## Bike Safety and Security



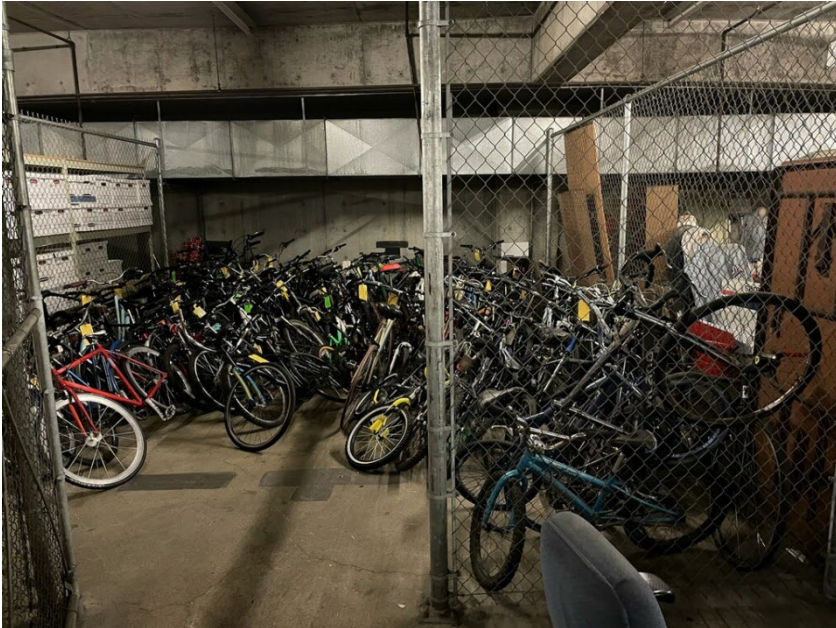
Bike Parking | Bike Share | Onboard | Safety | Stay Informed



# Recovery

## Lost & Found

There were 11 bikes recovered.  
Unclaimed  
bikes are donated to local faith-based  
organizations and schools.



# Prevention

EMU's have interior facing cameras on all cars.

There are plans for more secured bike facilities  
such as controlled access cages and lockers.

CCTV assessment underway to upgrade  
surveillance capabilities.



# Peer Agencies

- No info on SMART data. Riders generally sit near their bikes, on a hook. Covered bike facilities at stations are rarely used.
- SacRT had no notable bike theft case. Riders generally sit/stand with their bikes on the open areas, certain LRV's are hook equipped.
- ACE averages 1 bike theft case a year. Riders generally sit with or near their bikes as there are plenty of seats in the section.
- No info on VTA data. However, riders sit/stand with or near their bikes. LRV's are hook equipped at the middle section.
- No info on BART data. However, riders sit/stand with or near their bikes.
- No info on SF Muni data. However, bikes are not allowed on LRV's, except folding bikes, which would be near the rider.



**Thank you for your  
attention**

Questions ?

