



Corridor Crossings Strategy (CCS)

Connecting communities. Enhancing safety. Reducing risk.

Purpose

The **Corridor Crossings Strategy (CCS)** is a unified, corridor-wide vision—developed with cities, transportation authorities and regional leaders—to make every community along the Caltrain corridor safer and more connected. It brings near-term safety upgrades and long-term grade separations into two coordinated programs that work together to deliver meaningful improvements: Safety Enhancement Program and Elimination Program.

With limited funding across all levels of government, the CCS focuses shared resources where they will have the greatest impact. Through a transparent, data-driven approach, it offers a clear roadmap to help the corridor sequence investments and deliver projects efficiently—strengthening mobility, enhancing safety, and improving quality of life for everyone.

Why It Matters



Safe, Accessible Corridor: Shared goal of enhancing safety and improving connections for everyone who lives, works, and travels on, along, and through the Caltrain corridor.



Stronger Together: Corridor partner alignment to plan and deliver more effectively – speaking as one corridor to achieve safety, mobility, and community benefit goals.



Local Benefits: Coordinated corridor approach helps corridor partners invest resources into projects that yield early benefits, creating meaningful quality-of-life improvements sooner.



Strategic and Transparent Funding Decisions: With constrained funding at all levels, a corridor-wide program ensures that every dollar is directed where it delivers the greatest safety, mobility, and community benefit. Through a data-driven and transparent process, partners can make difficult but necessary tradeoffs to prioritize projects that are most competitive for external funding and deliver the highest public value.



Efficient and Accountable Delivery: Unified program with clear visibility of project status and progress to foster coordination, consistency, and accountability across all corridor partners.

The CCS Programs

Safety Enhancement Program:

Near-term quick-build upgrades to improve conditions at all crossings along Caltrain-owned corridor. The program excludes crossings on UPRR-owned right-of-way, as Caltrain does not have delivery authority.

- ★ **Baseline Safety Enhancements:** Set of improvements to be implemented at all crossings in the next few years upon funding availability.



Pavement Markings/
Signage/Hatching



Solar Lane
Markers



Delineators



City Traffic Timing
Adjustments

- ★ **Advanced Safety Enhancements:** Array of improvements to be applied individually or coupled on a crossing-by-crossing basis upon additional analysis of crossing needs.



Fencing



Concrete Work



Drainage
Improvements



Median
Installation/
Roadway
Channelization



Lighting Warning



Gates and Gate
Warning Signals



AI/Intrusion
Technology



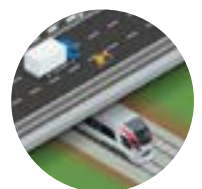
Quad Gates

Elimination Program:

- ★ **Closures:** Where the road is closed on both sides of the railroad. May include at-grade bicycle and pedestrian facilities to accommodate active transportation routes. Highest priority as fundable, quickly implementable solutions.



- ★ **Grade Separations:** Where the roadway and the railroad do not cross each other, and the railroad is either above or below the roadway. Includes all grade separations corridor jurisdictions identified or initiated.

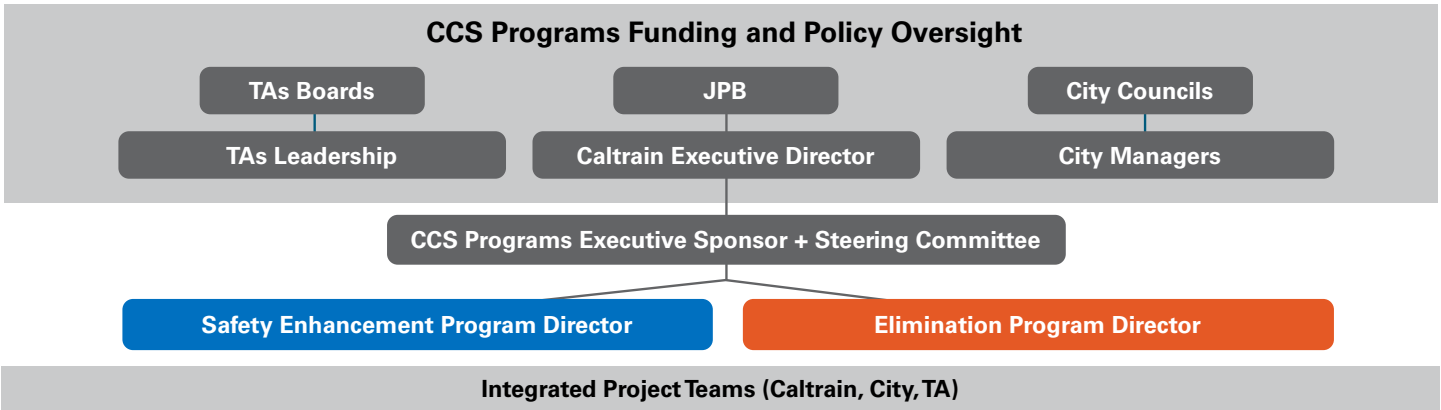




Transparent and Integrated Oversight and Delivery

The CCS programs will be implemented by integrated, cross-functional teams that standardize designs, reduce redundancies, leverage economies of scale, and pursue innovative delivery methods that streamline construction and minimize service disruptions. This coordinated structure enables faster, more consistent, and more cost-effective project delivery across the corridor.

Oversight will be strengthened through a new Funding and Policy Oversight group composed of Caltrain, corridor cities, and transportation authorities, ensuring transparency and shared accountability. These groups would get quarterly updates through established communication processes and will directly guide the safety enhancement and elimination program teams. Together, this governance and delivery model represents a step-change for the corridor—bringing partners into one coordinated system to deliver safety and mobility improvements more efficiently than ever before.



Sequence Lists

The CCS program sequences are a data-driven roadmap shaped by a consistent set of evaluation criteria including safety needs, community connectivity, project readiness, and funding availability. These criteria guide how projects are sequenced and grouped, ensuring the corridor advances the most impactful safety improvements, closures and grade separation projects in the near term. The Caltrain Board, in collaboration with corridor partners, will adopt updated program sequence lists annually, with public quarterly updates provided on progress and process to cities, transportation authorities, and local leaders.

Safety Enhancement Program

| Funding Groups | Near-Term Objectives |
|--|--|
| Baseline safety enhancements will be deployed across all Caltrain crossings. | |
| 1 | Design and construct safety enhancements to address highest priority safety crossings. |
| 2 | Advance design of safety enhancements to address next highest priority safety crossings. |
| 3 | Monitor annual safety trends for crossings with low safety indicators. |
| 4 | Monitor annual safety trends for crossings with lowest safety indicators. |
| Total Estimated Project Costs* (\$2024) | |
| Baseline Safety Enhancements | \$20 M |
| Advanced Safety Enhancements | \$180 M |

*Preliminary rough order of magnitude costs include construction and soft costs.

Elimination Program

| Funding Groups | Near-Term Objectives |
|----------------|--|
| A | Advance projects through construction. |
| B | Advance projects through final design. |
| C | Advance through preliminary engineering and environmental clearance. |
| D | Advise project to explore viable and feasible alternative solutions. |

Delivery of the elimination program, especially the corridor wide grade separation, is anticipated to cost billions of dollars and take decades to complete.

It is critical for the corridor to advance the safety enhancement program in the near-term to achieve cost-effective safety improvements at crossings.