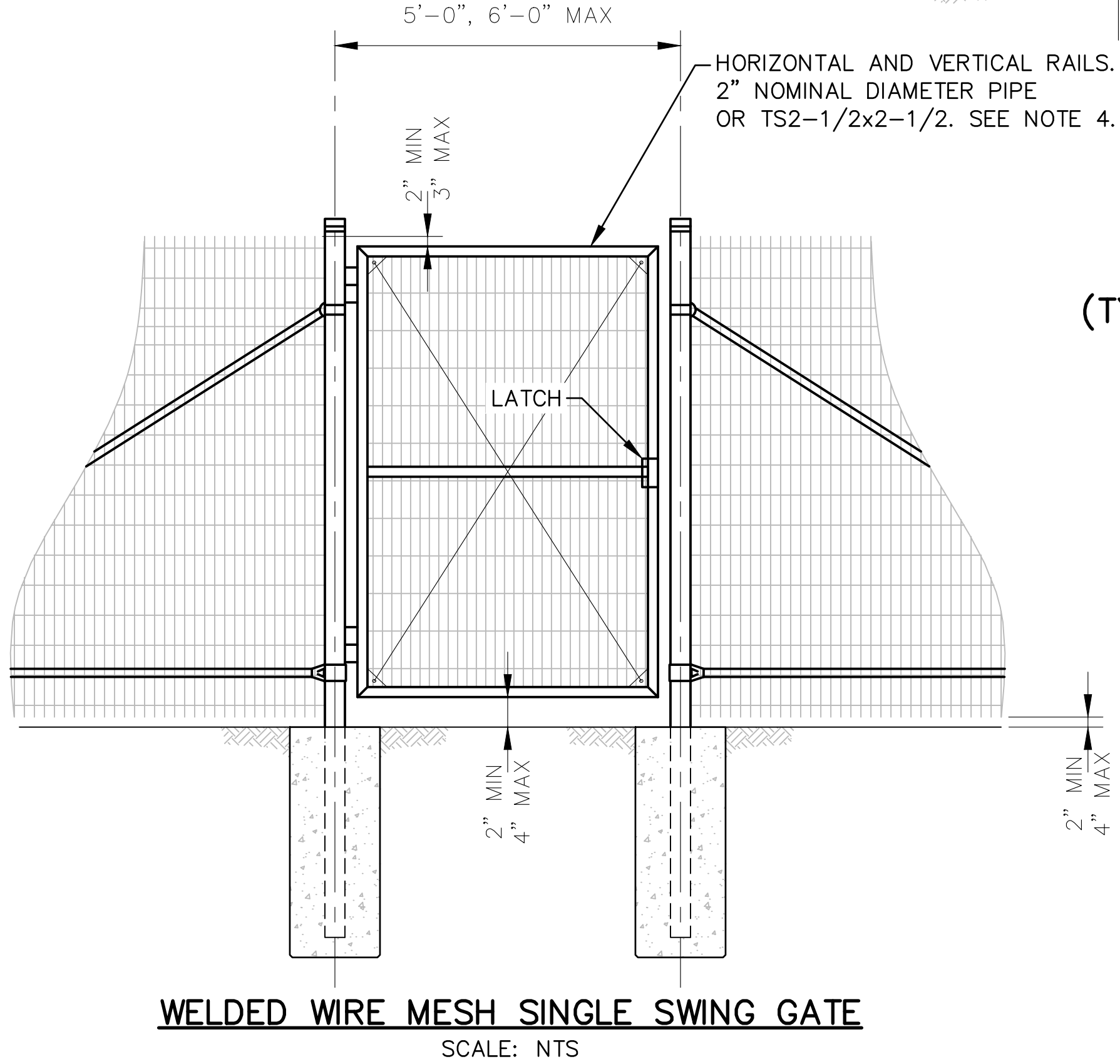
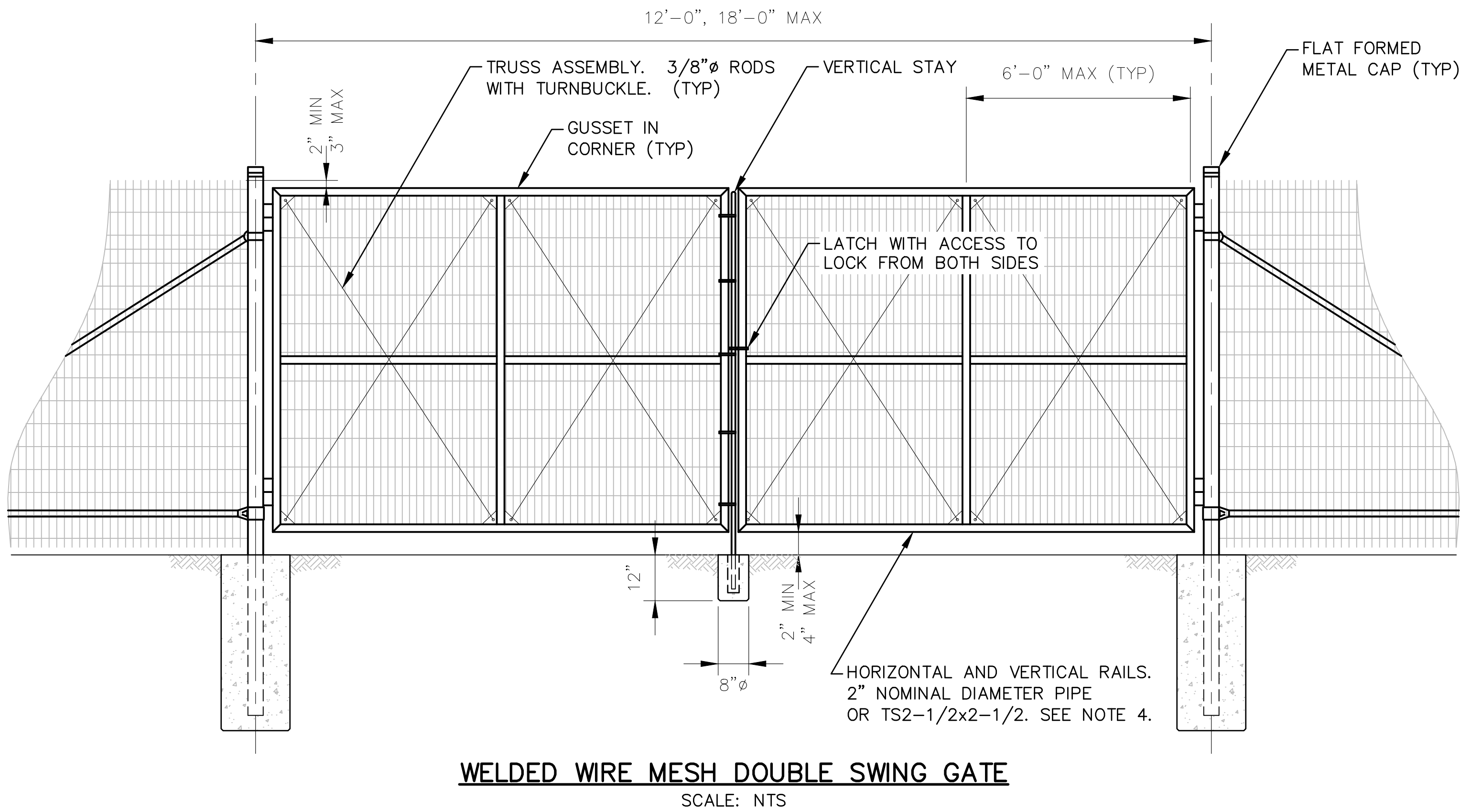
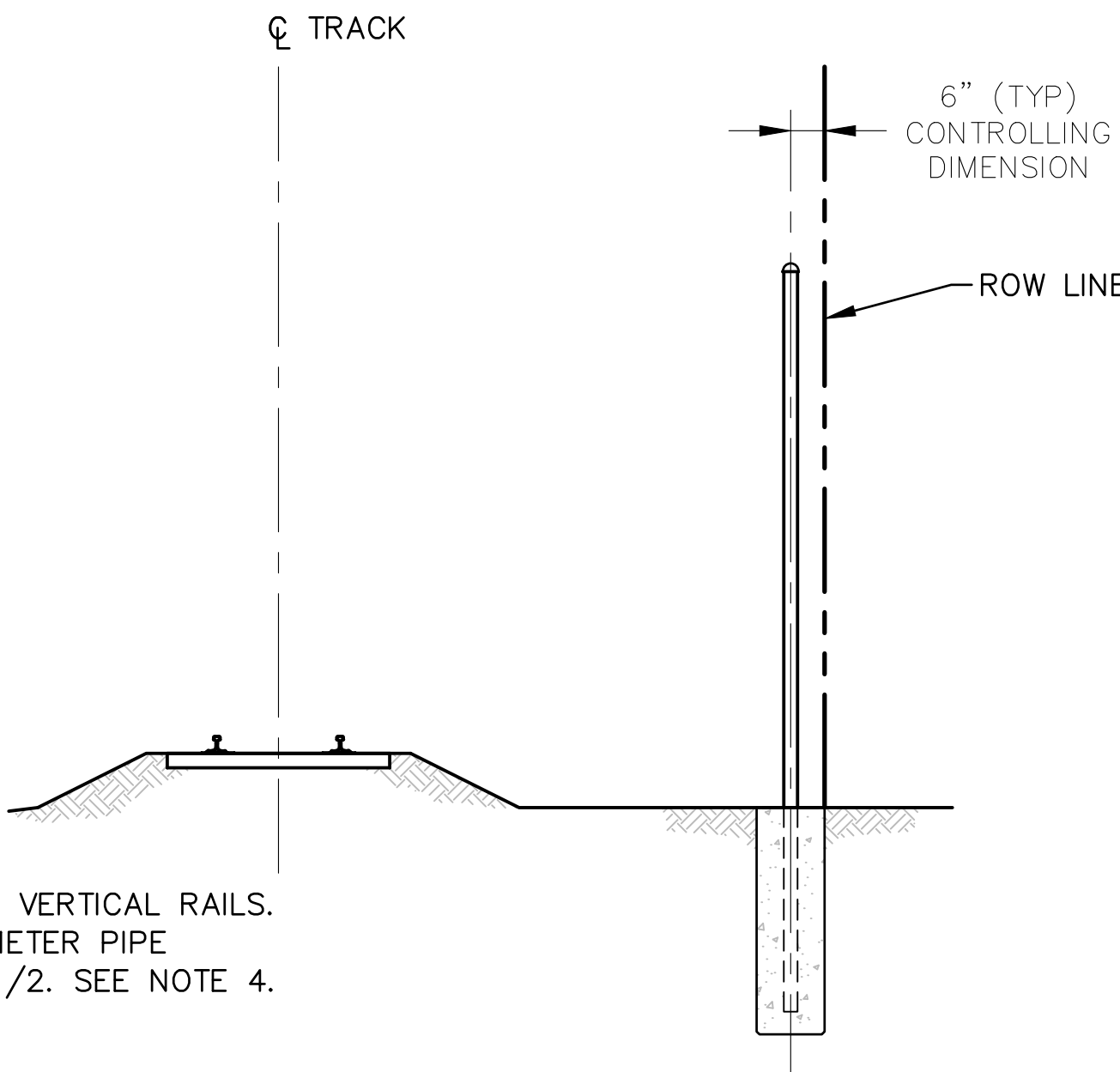
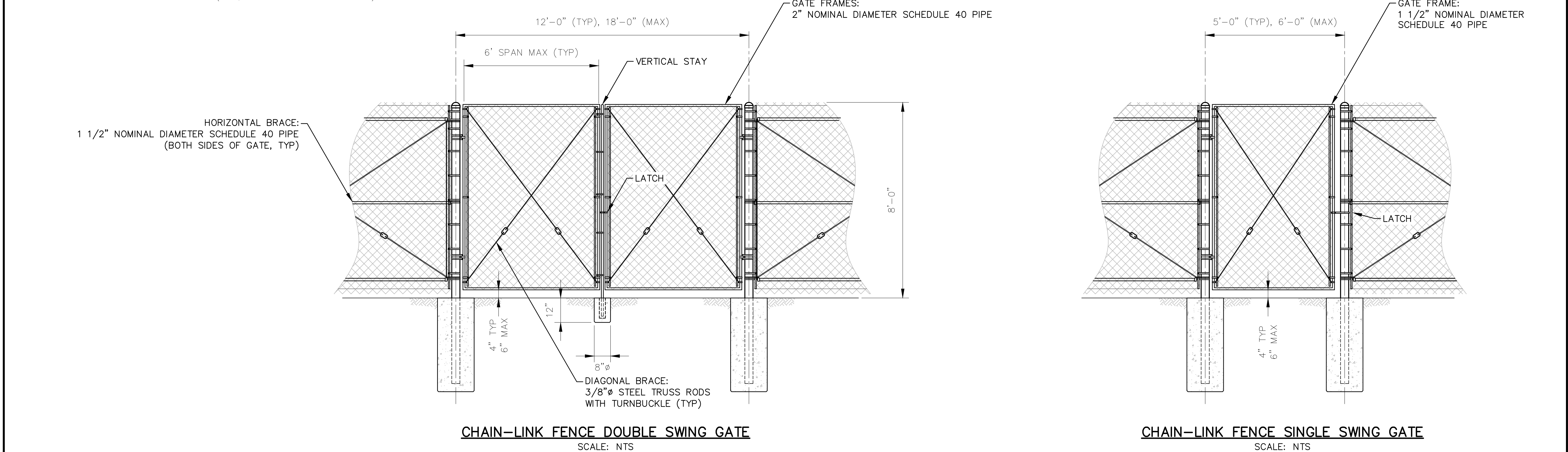
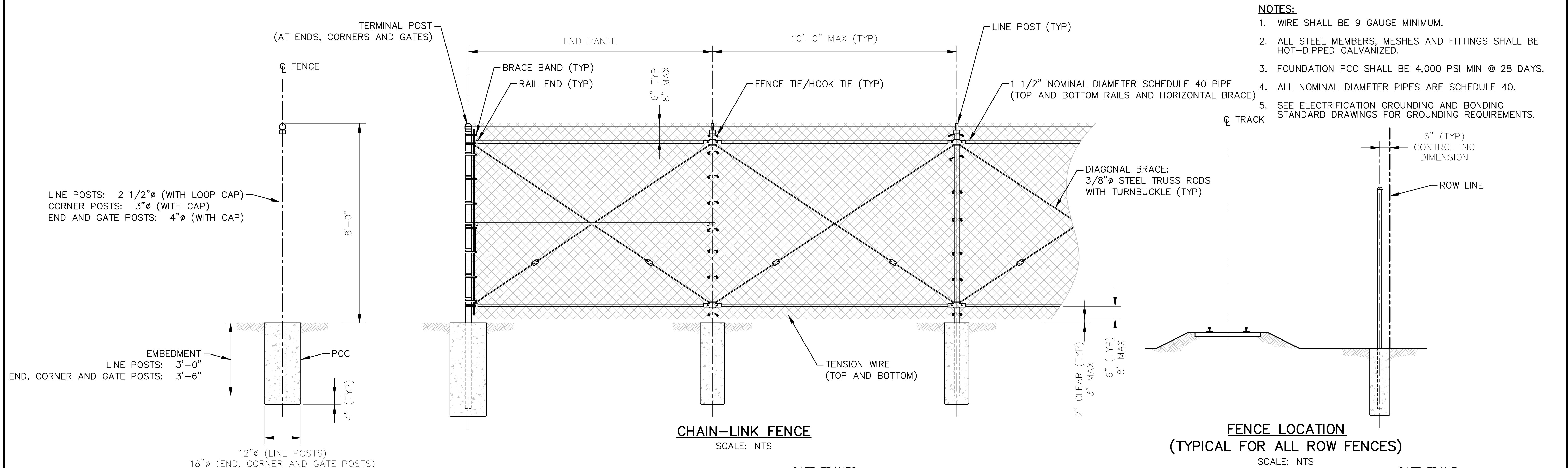


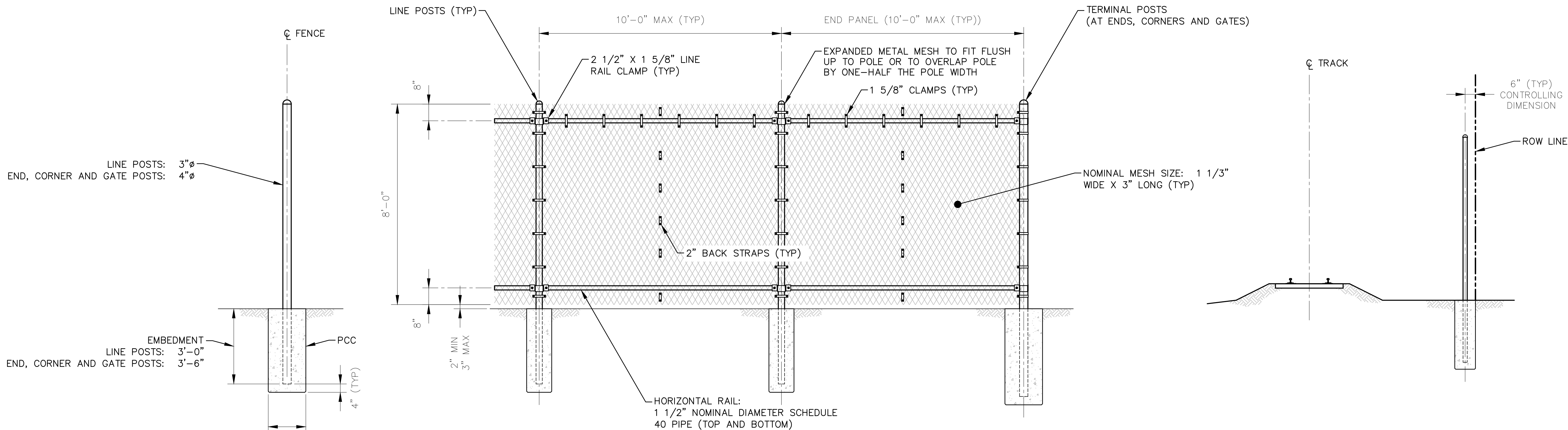
- NOTES:**
1. WELDED WIRE MESH SHALL BE TYPHOON BY SECURE TECHNOLOGY, INC. OR TRANSafe BY C. E. SHEPPERD. MESH SHALL BE HOT DIPPED GALVANIZED.
 2. QUANTITY, SIZE AND TYPE OF FASTENERS, HAT BRACKETS AND GAUGE TIES SHALL BE AS PER THE MANUFACTURER'S RECOMMENDATIONS.
 3. FOUNDATION PCC SHALL BE 4,000 PSI MIN @ 28 DAYS.
 4. TUBULAR MEMBERS ARE ACCEPTABLE ONLY IF COMPATIBLE WITH WIRE MESH INSTALLATION AND APPROVED BY OWNER.
 5. ALL STEEL MEMBERS, MESHES AND FITTINGS SHALL BE HOT DIPPED GALVANIZED.
 6. SEE ELECTRIFICATION GROUNDING AND BONDING STANDARD DRAWINGS FOR GROUNDING REQUIREMENTS.



										PENINSULA CORRIDOR JOINT POWERS BOARD		ENGINEERING STANDARD DRAWINGS		CADD FILE NAME: SD-9001	
										APPROVED BY: <i>Bin Zhang</i>		RIGHT-OF-WAY FENCING		REV:	EDITION: FIFTH
										DIRECTOR, ENGINEERING		RESIDENTIAL AREA WELDED WIRE MESH FENCE		SCALE: NOT TO SCALE	
														STANDARD DRAWING NO.: SD-9001	
010126					FIFTH EDITION										
REV	DATE	BY	CHK	APP	DESCRIPTION	REV	DATE	BY	CHK	APP	DESCRIPTION				



										PENINSULA CORRIDOR JOINT POWERS BOARD		ENGINEERING STANDARD DRAWINGS		CADD FILE NAME: SD-9002	
										APPROVED BY: <i>Bin Zhang</i>		RIGHT-OF-WAY FENCING		REV:	EDITION: FIFTH
										DIRECTOR, ENGINEERING		INDUSTRIAL AREA CHAIN-LINK FENCE		SCALE: NOT TO SCALE	
														STANDARD DRAWING NO.: SD-9002	
010126				FIFTH EDITION	REV	DATE	BY	CHK	APP	DESCRIPTION	REV	DATE	BY	CHK	APP

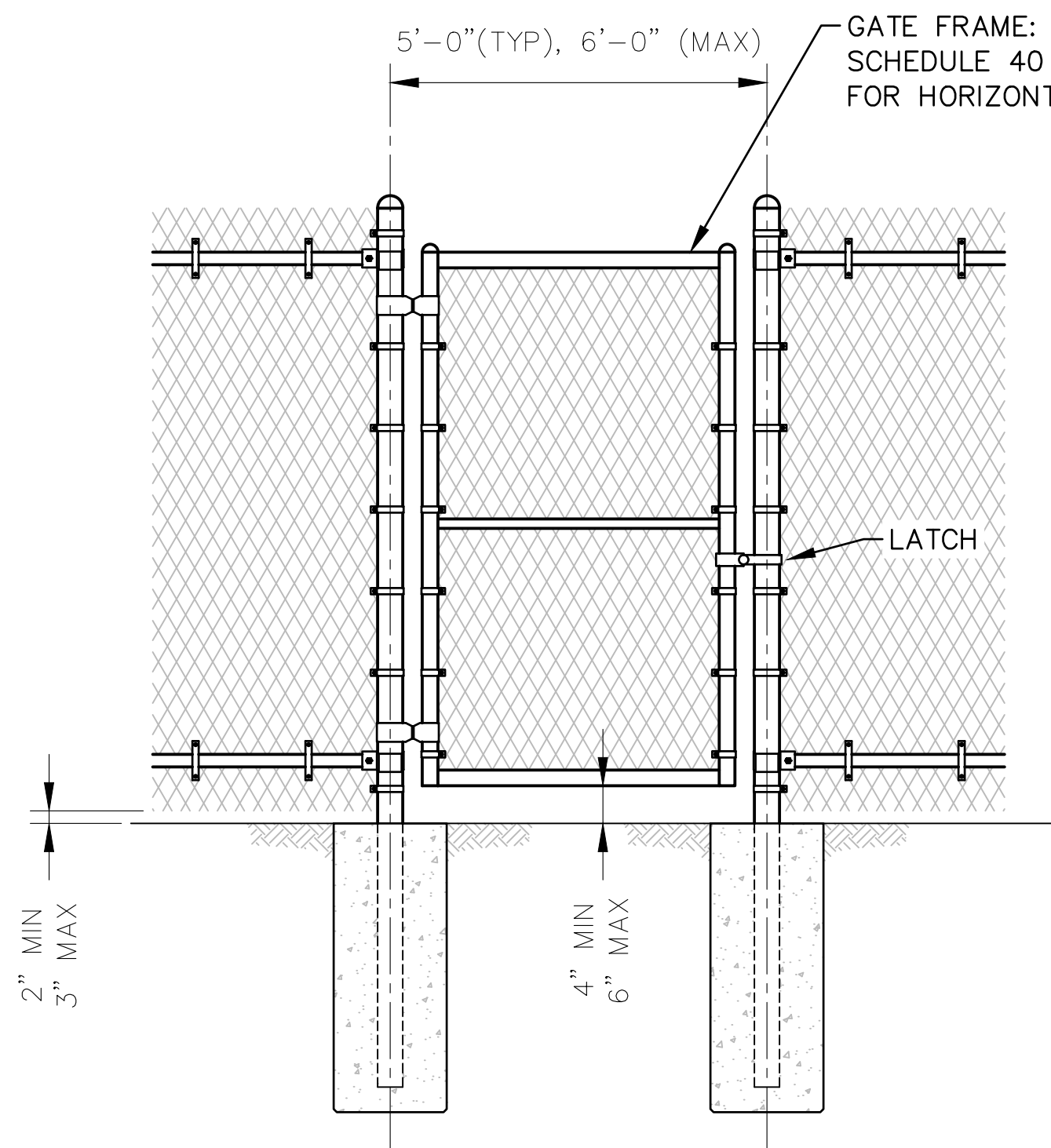


EXPANDED METAL MESH FENCE

SCALE: NTS

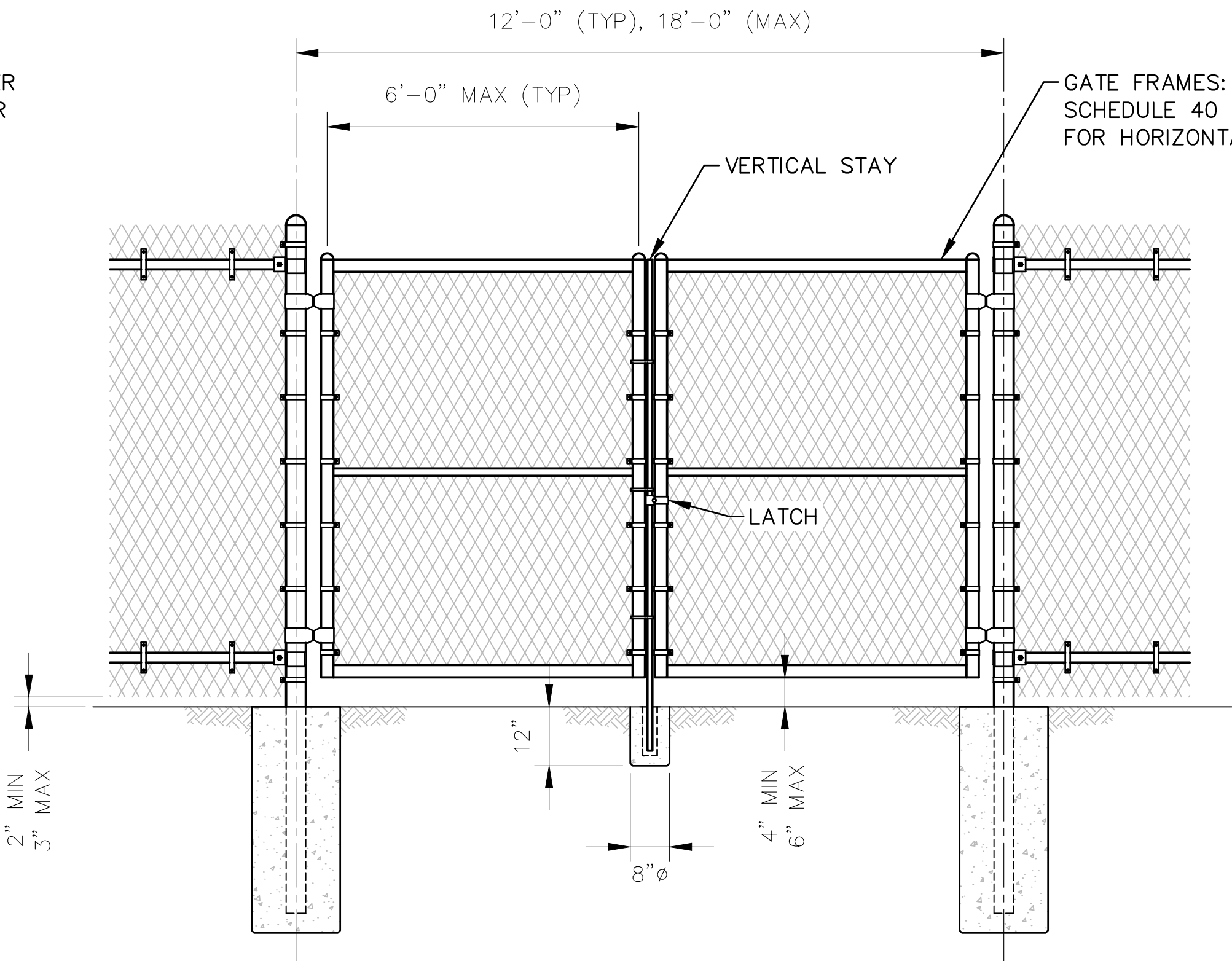
FENCE LOCATION
(TYPICAL FOR ALL ROW FENCES)

SCALE: NTS



EXPANDED METAL MESH FENCE
WITH SINGLE SWING GATE

SCALE: NTS



EXPANDED METAL MESH FENCE
WITH DOUBLE SWING GATE

SCALE: NTS

NOTES:

- FENCE MESH SHALL BE SECURA 13 GAGE (REGULAR) WITH MESH DIAMOND SIZE 0.500" X 1.200" WITH MINIMUM 24 DIAMONDS PER LINEAR FOOT OR ENGINEER APPROVED EQUAL.
- ALL STEEL MEMBERS, MESHES AND FITTINGS SHALL BE HOT DIPPED GALVANIZED.
- FOUNDATION PCC SHALL BE 4,000 PSI MIN @ 28 DAYS.
- QUANTITY, SIZE AND TYPE OF FASTENERS AND FITTINGS SHALL BE AS PER THE MANUFACTURER'S RECOMMENDATIONS.
- ALL NUT TYPE FASTENERS SHALL BE TACK-WELDED TO BOLTS AFTER TIGHTENING.
- SEE ELECTRIFICATION GROUNDING AND BONDING STANDARD DRAWINGS FOR GROUNDING REQUIREMENTS.

PENINSULA CORRIDOR JOINT POWERS BOARD

ENGINEERING STANDARD DRAWINGS

APPROVED BY:

Bin Zhang

DIRECTOR, ENGINEERING



RIGHT-OF-WAY
FENCING

HIGH SECURITY AREA
EXPANDED METAL MESH FENCE

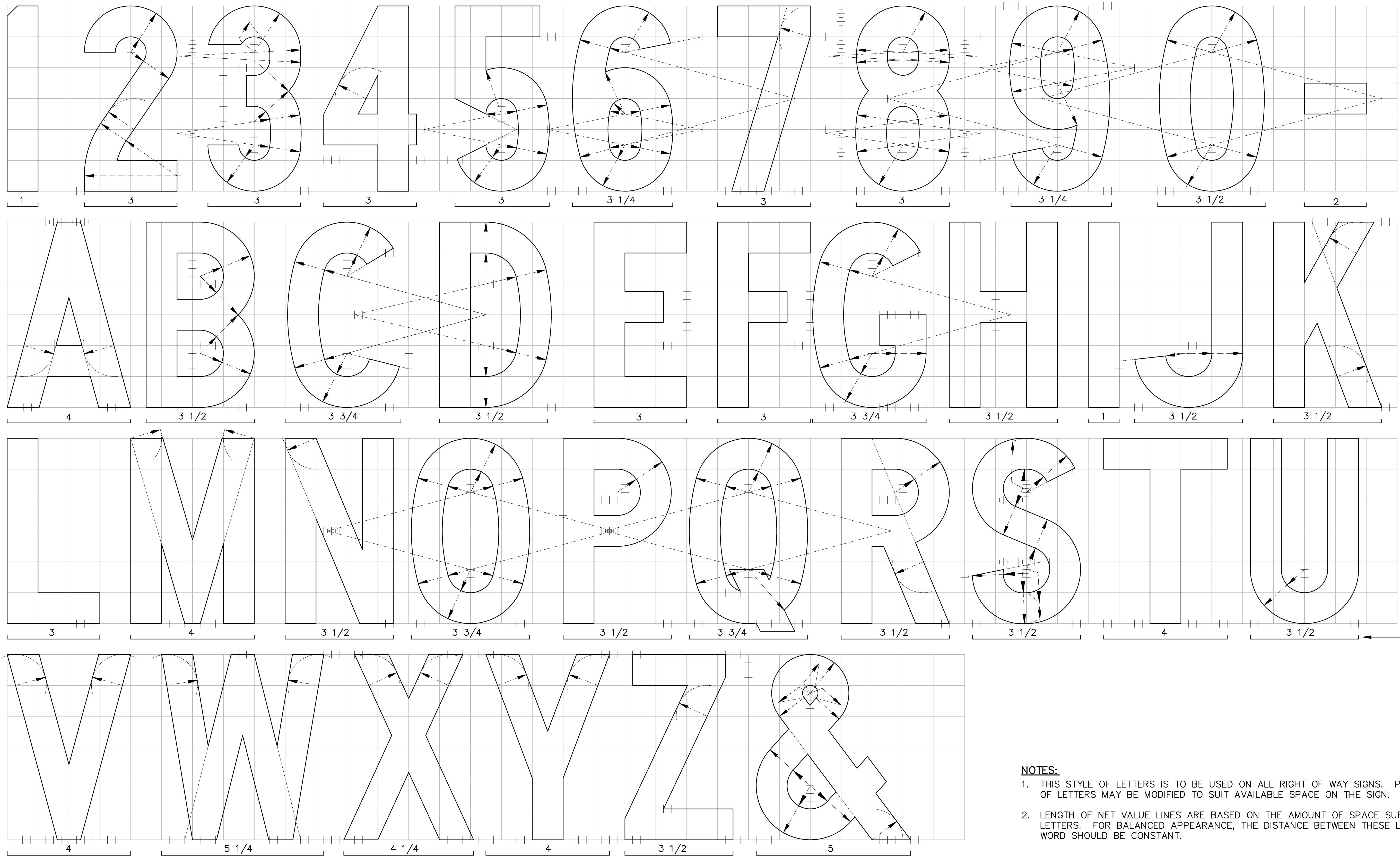
CADD FILE NAME:
SD-9003

REV: EDITION:
FIFTH

SCALE:
NOT TO SCALE

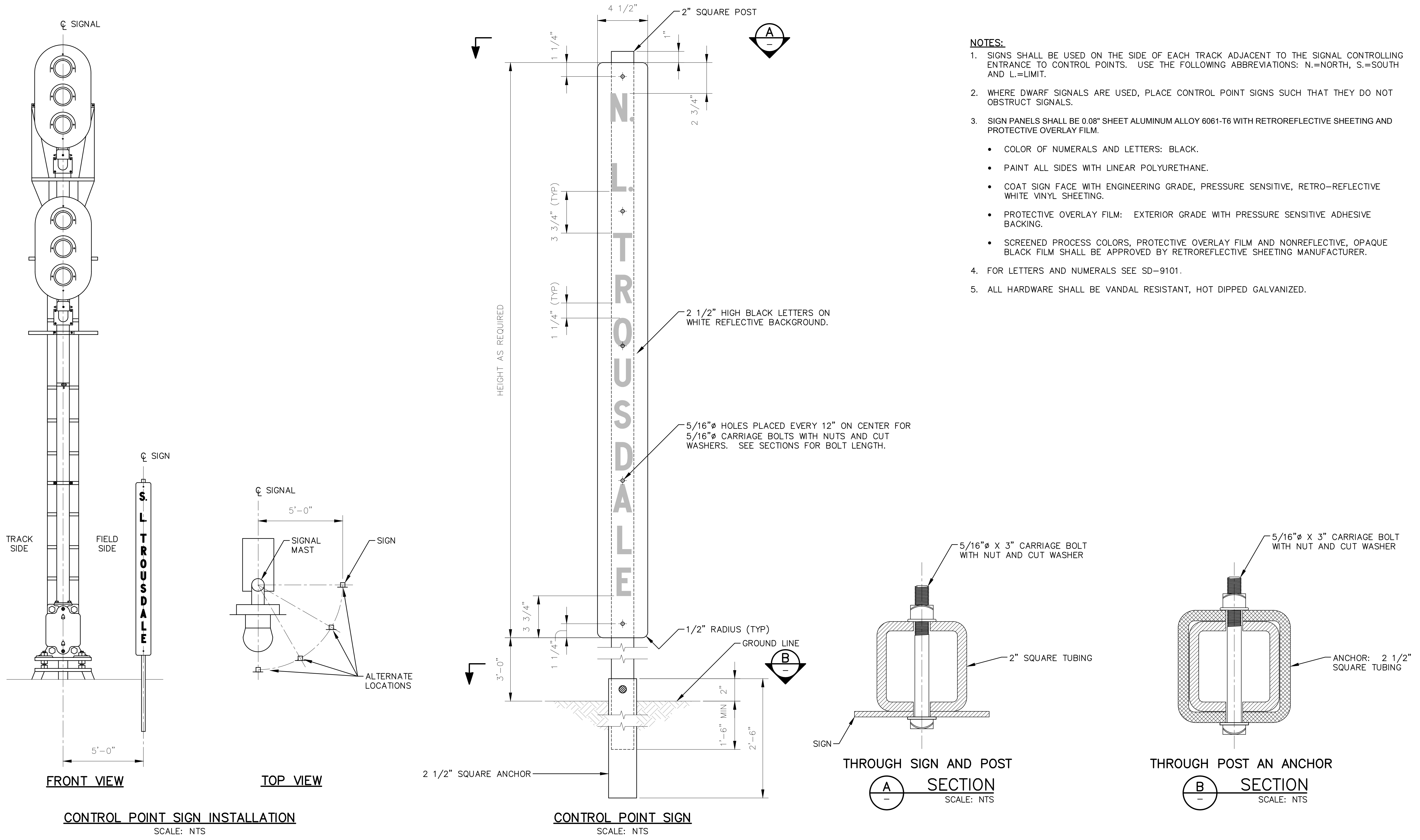
STANDARD DRAWING NO.:
SD-9003

REV	DATE	BY	CHK	APP	DESCRIPTION
010126					FIFTH EDITION

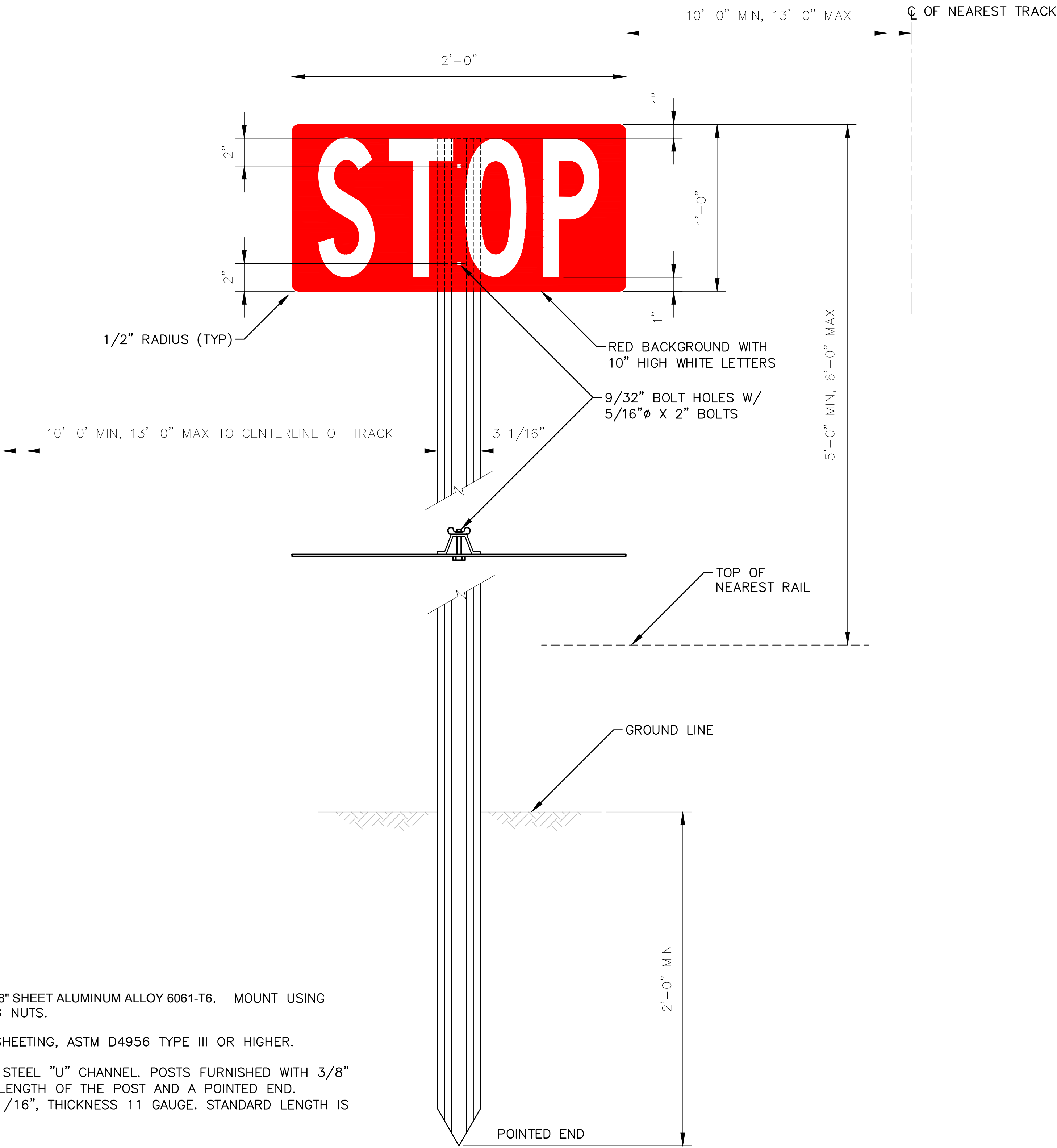


- NOTES:**
1. THIS STYLE OF LETTERS IS TO BE USED ON ALL RIGHT OF WAY SIGNS. PROPORTIONING OF LETTERS MAY BE MODIFIED TO SUIT AVAILABLE SPACE ON THE SIGN.
 2. LENGTH OF NET VALUE LINES ARE BASED ON THE AMOUNT OF SPACE SURROUNDING LETTERS. FOR BALANCED APPEARANCE, THE DISTANCE BETWEEN THESE LINES IN ANY WORD SHOULD BE CONSTANT.

												PENINSULA CORRIDOR JOINT POWERS BOARD		ENGINEERING STANDARD DRAWINGS		CADD FILE NAME: SD-9101	
												APPROVED BY: <i>Bin Zhang</i>		RIGHT-OF-WAY SIGNAGE		REV:	EDITION: FIFTH
														LETTERING FOR SIGNS		SCALE: NOT TO SCALE	
																STANDARD DRAWING NO.: SD-9101	
REV	DATE	BY	CHK	APP	DESCRIPTION	REV	DATE	BY	CHK	APP							
	010126				FIFTH EDITION												





										PENINSULA CORRIDOR JOINT POWERS BOARD		ENGINEERING STANDARD DRAWINGS		CADD FILE NAME: SD-9102	
										APPROVED BY: <i>Bin Zhang</i>		RIGHT-OF-WAY SIGNAGE		REV:	EDITION: FIFTH
										DIRECTOR, ENGINEERING		CONTROL POINT SIGNS		SCALE: NOT TO SCALE	
														STANDARD DRAWING NO.: SD-9102	
010126					FIFTH EDITION										
REV	DATE	BY	CHK	APP	DESCRIPTION	REV	DATE	BY	CHK	APP					

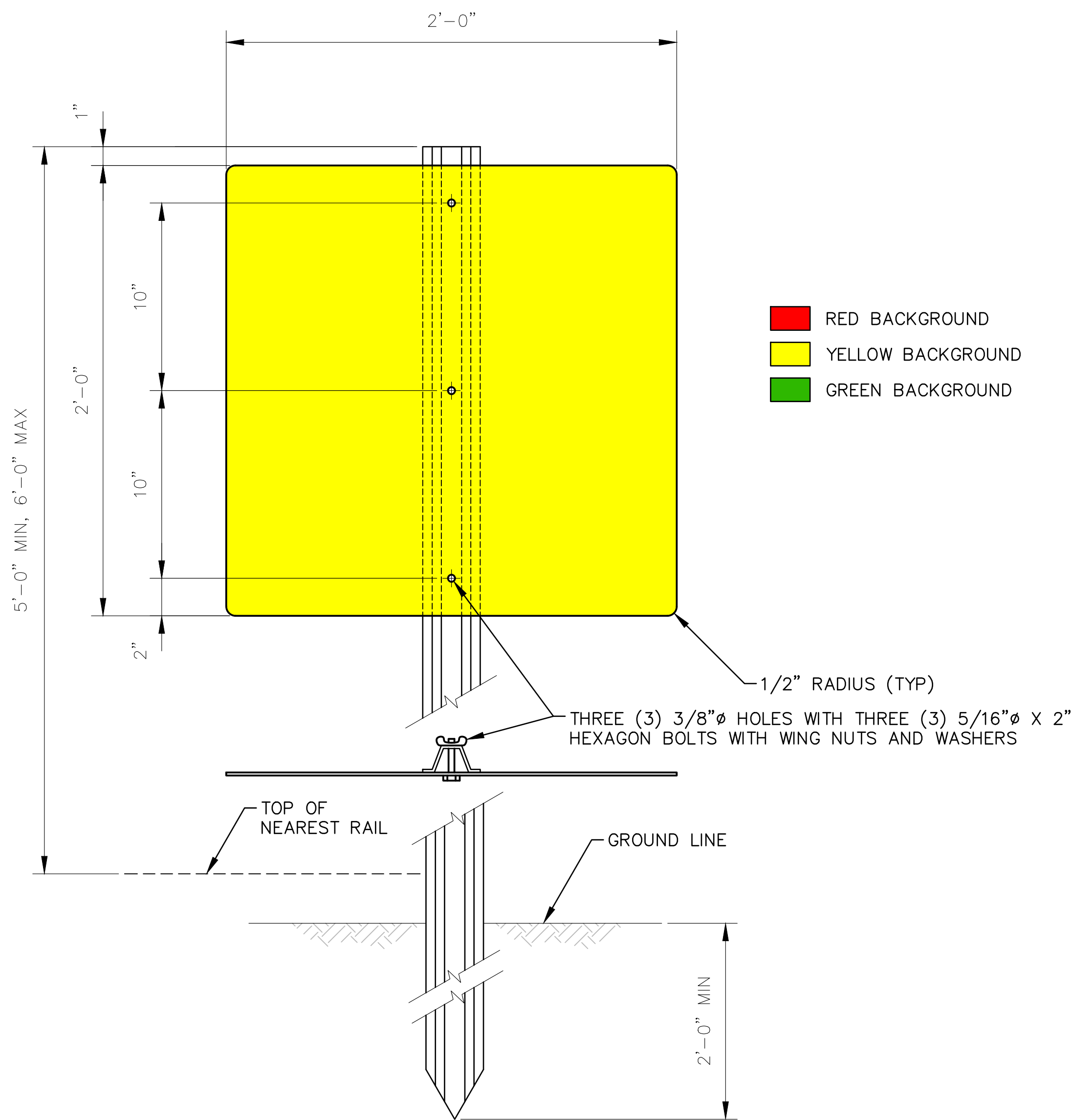


NOTES:

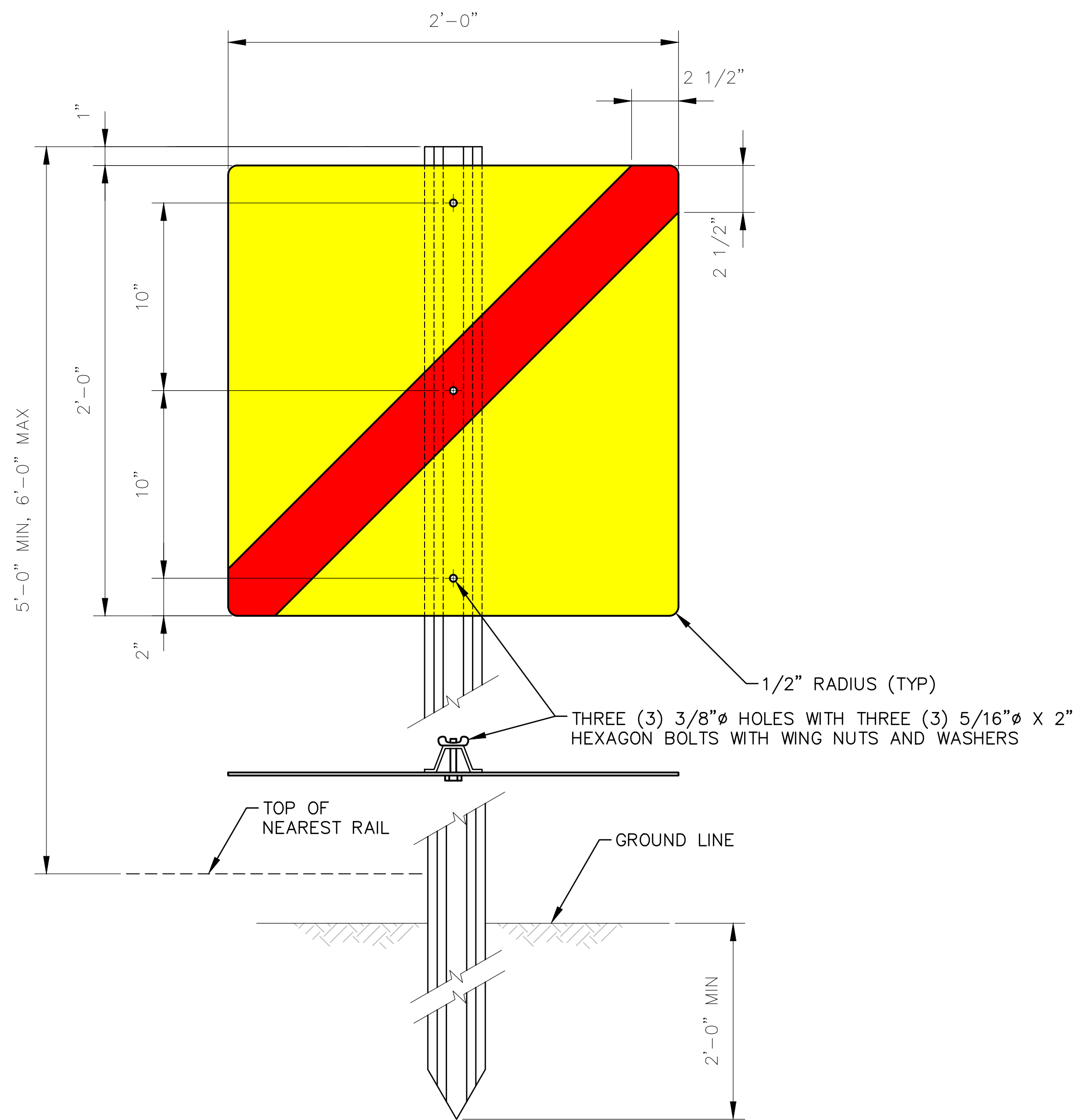
- 1. SIGNS SHALL BE MANUFACTURED FROM 0.08" SHEET ALUMINUM ALLOY 6061-T6. MOUNT USING HEXAGON BOLTS WITH WASHERS AND WING NUTS.
- 2. COAT SIGN FACE WITH RETROREFLECTIVE SHEETING, ASTM D4956 TYPE III OR HIGHER.
- 3. POST SHALL BE HOT-DIPPED GALVANIZED STEEL "U" CHANNEL. POSTS FURNISHED WITH 3/8" HOLES ON 1" CENTERS FOR THE ENTIRE LENGTH OF THE POST AND A POINTED END. DIMENSIONS: DEPTH 1 7/16", WIDTH 3 1/16", THICKNESS 11 GAUGE. STANDARD LENGTH IS 10'-0", LONGER LENGTHS AVAILABLE.
- 4. FOR LETTERS, SEE SD-9101.

STOP SIGN
SCALE: NTS

										PENINSULA CORRIDOR JOINT POWERS BOARD					ENGINEERING STANDARD DRAWINGS					CADD FILE NAME: SD-9104							
										<div>APPROVED BY:  DIRECTOR, ENGINEERING</div>										RIGHT-OF-WAY SIGNAGE STOP SIGN					REV:	EDITION: FIFTH	
																									SCALE: NTS		
010126					FIFTH EDITION																						
REV	DATE	BY	CHK	APP	DESCRIPTION					REV	DATE	BY	CHK	APP													

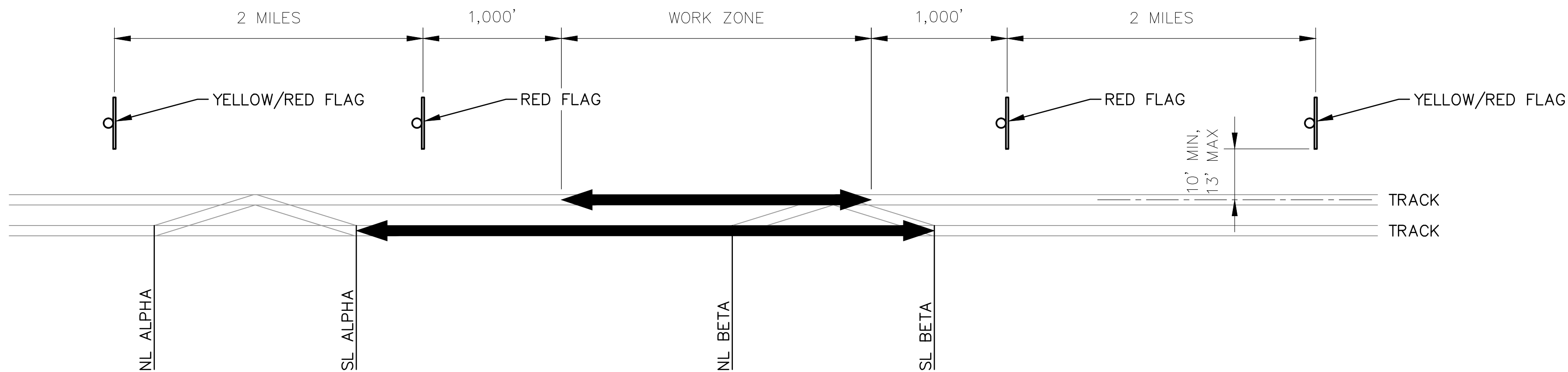


SOLID COLORED (RED, YELLOW OR GREEN) FLAGS
SCALE: NTS





YELLOW/RED FLAG
SCALE: NTS

- NOTES:**
1. RED FLAGS SHALL BE DISPLAYED WHERE TRAINS MUST BE STOPPED IN ACCORDANCE WITH GENERAL CODE 5.4.7. FLAGS SHALL BE DISPLAYED TO THE RIGHT OF THE TRACK AS VIEWED FROM AN APPROACHING TRAIN OR PLACED BETWEEN THE RAILS.
 2. YELLOW/RED FLAGS SHALL BE DISPLAYED 2 MILES BEFORE THE RESTRICTED AREA IN ACCORDANCE WITH GENERAL CODE 5.4.3. FLAGS SHALL BE DISPLAYED TO THE RIGHT OF THE TRACK AS VIEWED FROM AN APPROACHING TRAIN.
 3. YELLOW FLAGS SHALL BE DISPLAYED 2 MILES BEFORE THE RESTRICTED AREA IN ACCORDANCE WITH GENERAL CODE 5.4.2. FLAGS SHALL BE DISPLAYED TO THE RIGHT OF THE TRACK AS VIEWED FROM AN APPROACHING TRAIN.
 4. GREEN FLAGS SHALL BE DISPLAYED AT THE END OF THE LAST SPEED RESTRICTION IN ACCORDANCE WITH GENERAL CODE 5.4.5. FLAGS SHALL BE DISPLAYED TO THE RIGHT OF THE TRACK AS VIEWED FROM AN APPROACHING TRAIN.
 5. DISTANCE FROM CENTERLINE OF TRACK TO THE CLOSEST EDGE OF THE FLAG MUST NOT BE LESS THAN 10 FEET OR MORE THAN 13 FEET.
 6. FLAGS SHALL BE MANUFACTURED FROM 0.08" SHEET ALUMINUM ALLOY 6061-T6. MOUNT WITH THREE (3) 5/16" X 2" HEXAGON BOLTS WITH WASHERS AND WING NUTS.
 7. COAT SIGN FACE WITH RETROREFLECTIVE SHEETING, ASTM D4956 TYPE III OR HIGHER.
 8. POSTS SHALL BE HOT DIPPED GALVANIZED STEEL "U" CHANNEL. POSTS FURNISHED WITH 3/8" HOLES ON 1" CENTERS FOR THE ENTIRE LENGTH OF THE POST AND A POINTED END. DIMENSIONS: DEPTH 1 7/16", WIDTH 3 1/16", THICKNESS 11 GAUGE.



FORM B SIGN PLACEMENT AND TRACK AND TIME LIMITS
SCALE: NTS

																				PENINSULA CORRIDOR JOINT POWERS BOARD										ENGINEERING STANDARD DRAWINGS										CADD FILE NAME: SD-9105																			
																				APPROVED BY: <i>Bin Zhang</i> DIRECTOR, ENGINEERING																				RIGHT-OF-WAY SIGNAGE										REV: EDITION: FIFTH									
																																								TEMPORARY TRACK CONDITION SIGNS										SCALE: NTS									
																																																		STANDARD DRAWING NO.: SD-9105									
010126										FIFTH EDITION																																																	
REV DATE BY CHK APP DESCRIPTION										REV DATE BY CHK APP DESCRIPTION																																																	

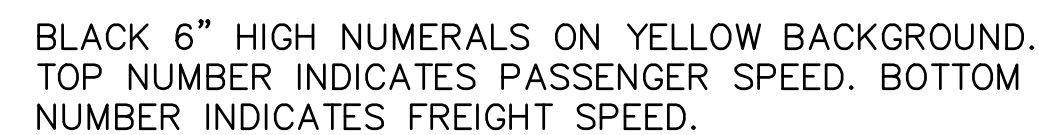


5/16" ϕ X 3" MACHINE BOLT
WITH NUT AND CUT WASHER

2" SQUARE TUBING

SIGN

A SECTION
— SCALE: NTS



5/16" ϕ X 3" MACHINE BOLT
WITH NUT AND CUT WASHER

ANCHOR: 2 1/2"
SQUARE TUBING

This technical drawing shows a cross-section of a bolted anchor assembly. A vertical machine bolt, specified as 5/16" diameter by 3" long, passes through a square anchor. The anchor is identified as 2 1/2" square tubing. The bolt is secured with a nut and a cut washer at the top. The drawing uses hatching to differentiate the components: diagonal lines for the anchor and cross-hatching for the bolt's threaded section.

B SECTION
— SCALE: NTS



- SCREENED PROCESS COLORS, PROTECTIVE OVERLAY FILM AND NONREFLECTIVE, OPAQUE, BLACK FILM SHALL BE APPROVED BY THE RETROREFLECTIVE SHEETING MANUFACTURER.

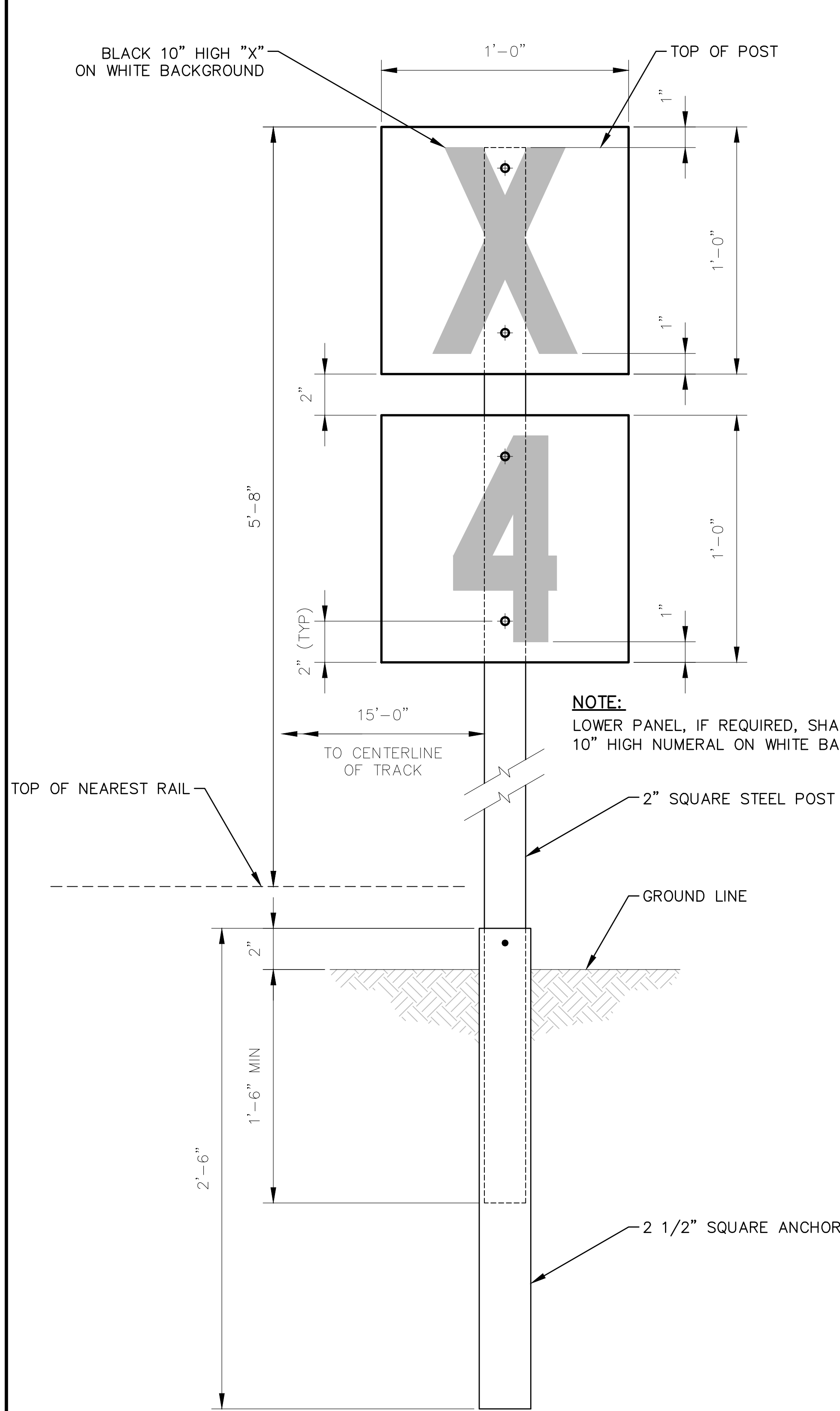
	010126					FIFTH EDITION														
REV	DATE	BY	CHK	APP		DESCRIPTION	REV	DATE	BY	CHK	APP									

Bin Zhang

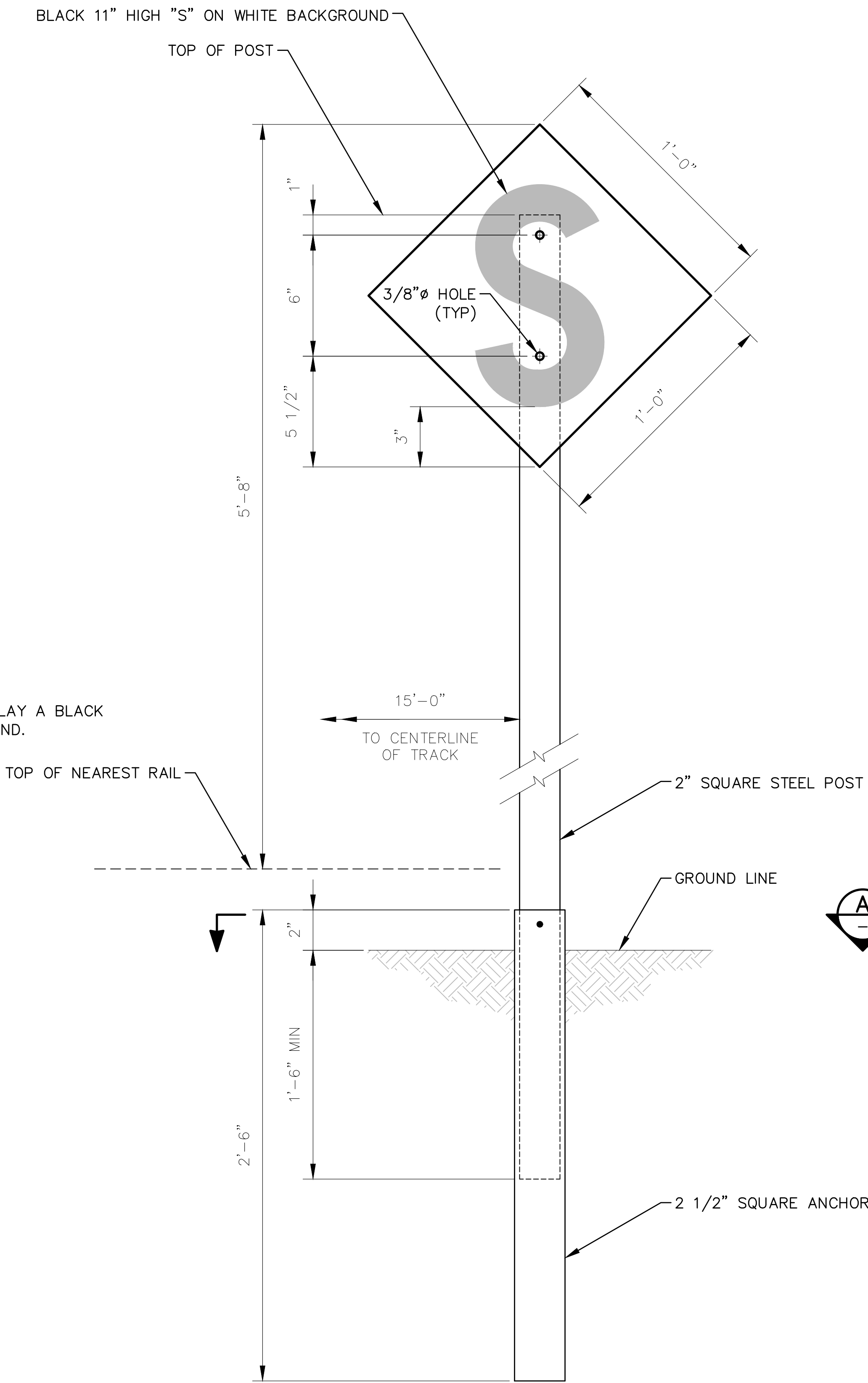


PERMANENT SPEED SIGNS

STANDARD DRAWING NO.:
SD-9106



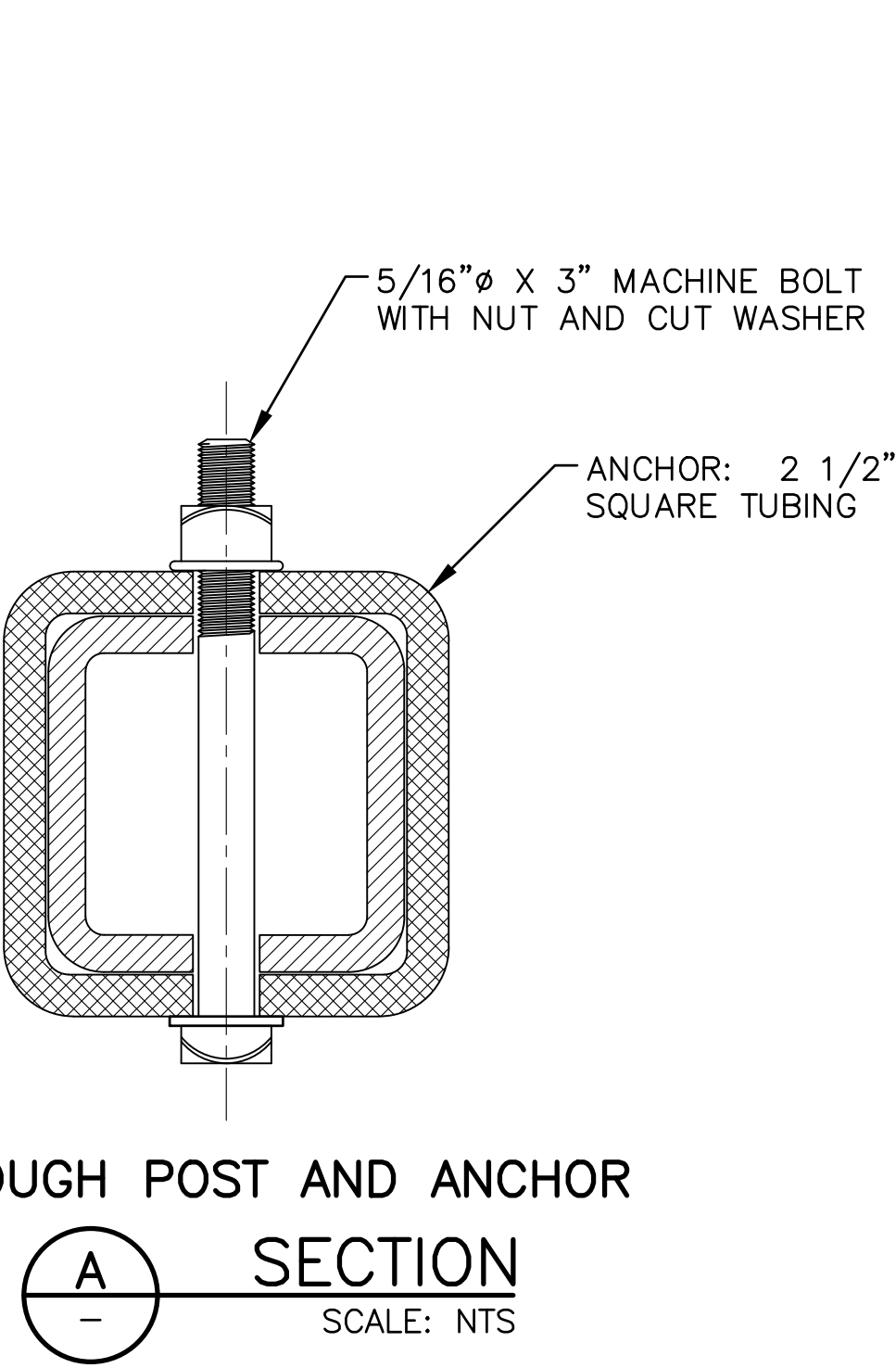
WHISTLING BOARD
ELEVATION
SCALE: NTS




STATION ONE MILE SIGN
ELEVATION
SCALE: NTS

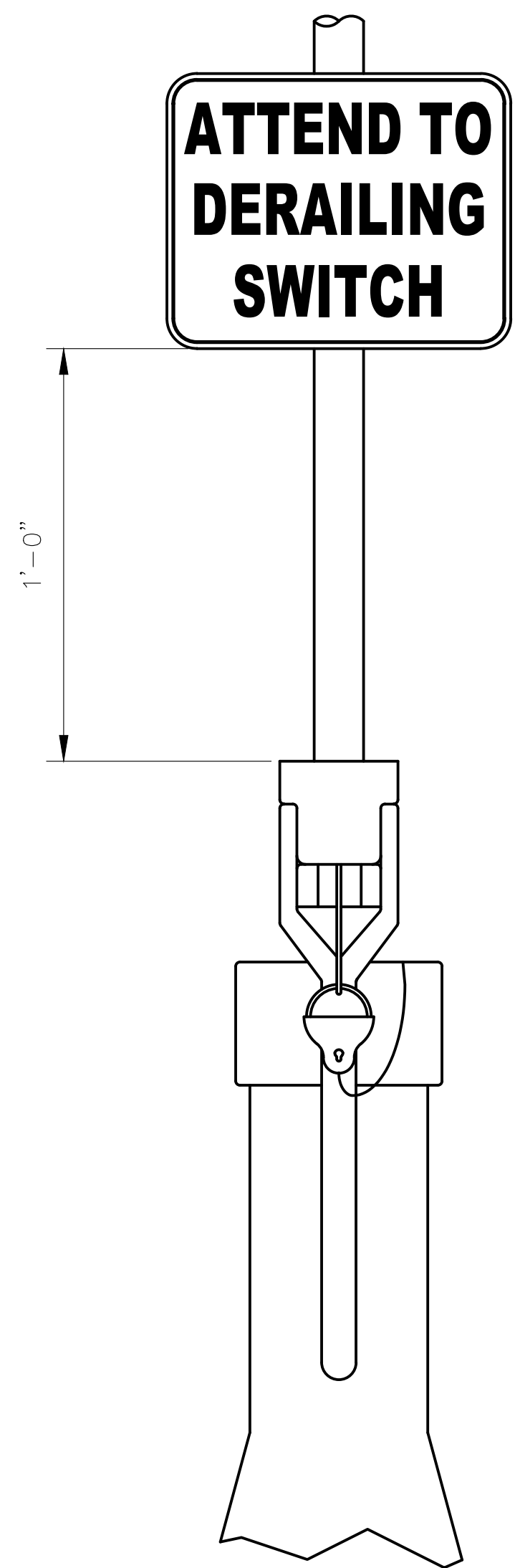
NOTES:

- SIGN SHALL BE LOCATED TO THE RIGHT OF THE TRACK AS VIEWED FROM AN APPROACHING TRAIN.
- SIGN POST SHALL BE LOCATED 15 FEET (10' MIN; 20' MAX) FROM THE CENTER LINE OF TRACK. POSTS SHALL BE PLACED TO THE EAST OF MAIN TRACKS 1 OR 3 AND WEST OF MAIN TRACKS 2 OR 4.
- WHISTLING BOARD SHALL BE PLACED AS NEARLY AS PRACTICABLE ONE QUARTER MILE (1,320') DISTANT FROM CROSSING OR OTHER OBSTRUCTION. WHERE THERE ARE MULTIPLE PUBLIC CROSSINGS NOT MORE THAN ONE QUARTER MILE (1,320') APART, SIGN BEARING LETTER "X" LOCATED ONE QUARTER MILE (1,320') IN ADVANCE OF FIRST CROSSING SHALL ALSO DISPLAY A FIGURE WHICH REPRESENTS THE NUMBER OF CROSSINGS INVOLVED.
- STATION ONE MILE SIGN SHALL BE PLACED ONE MILE (5,280') IN ADVANCE OF A PASSENGER STATION.
- THE SIGN PANELS SHALL BE 0.08" SHEET ALUMINUM ALLOY 6061-T6 WITH RETROREFLECTIVE SHEETING AND PROTECTIVE OVERLAY FILM.
 - COLOR OF NUMERALS AND LETTERS: BLACK.
 - PAINT ALL SIDES WITH LINEAR POLYURETHANE.
 - SHEETING SHALL BE RETRO-REFLECTIVE PRISMATIC, ASTM 4956 CLASS III OR HIGHER.
 - PROTECTIVE OVERLAY FILM: EXTERIOR GRADE WITH PRESSURE SENSITIVE ADHESIVE BACKING.
 - SCREENED PROCESS COLORS, PROTECTIVE OVERLAY FILM AND NONREFLECTIVE, OPAQUE, BLACK FILM SHALL BE APPROVED BY RETROREFLECTIVE SHEETING MANUFACTURER.
- ALL HARDWARE SHALL BE VANDAL RESISTANT AND HOT DIPPED GALVANIZED.
- FOR TEXT AND NUMERALS, SEE SD-9101.

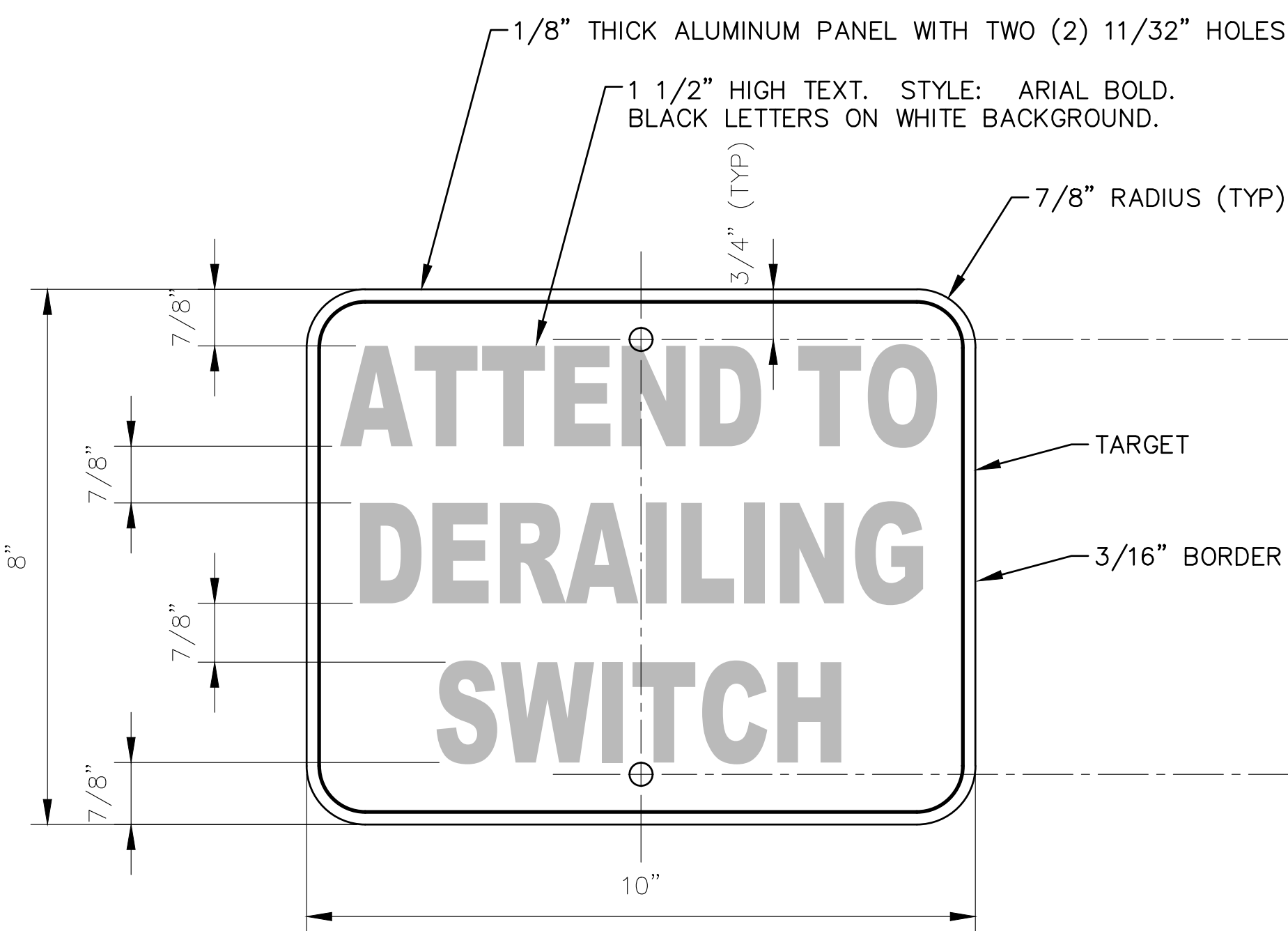


THROUGH POST AND ANCHOR
SECTION
SCALE: NTS

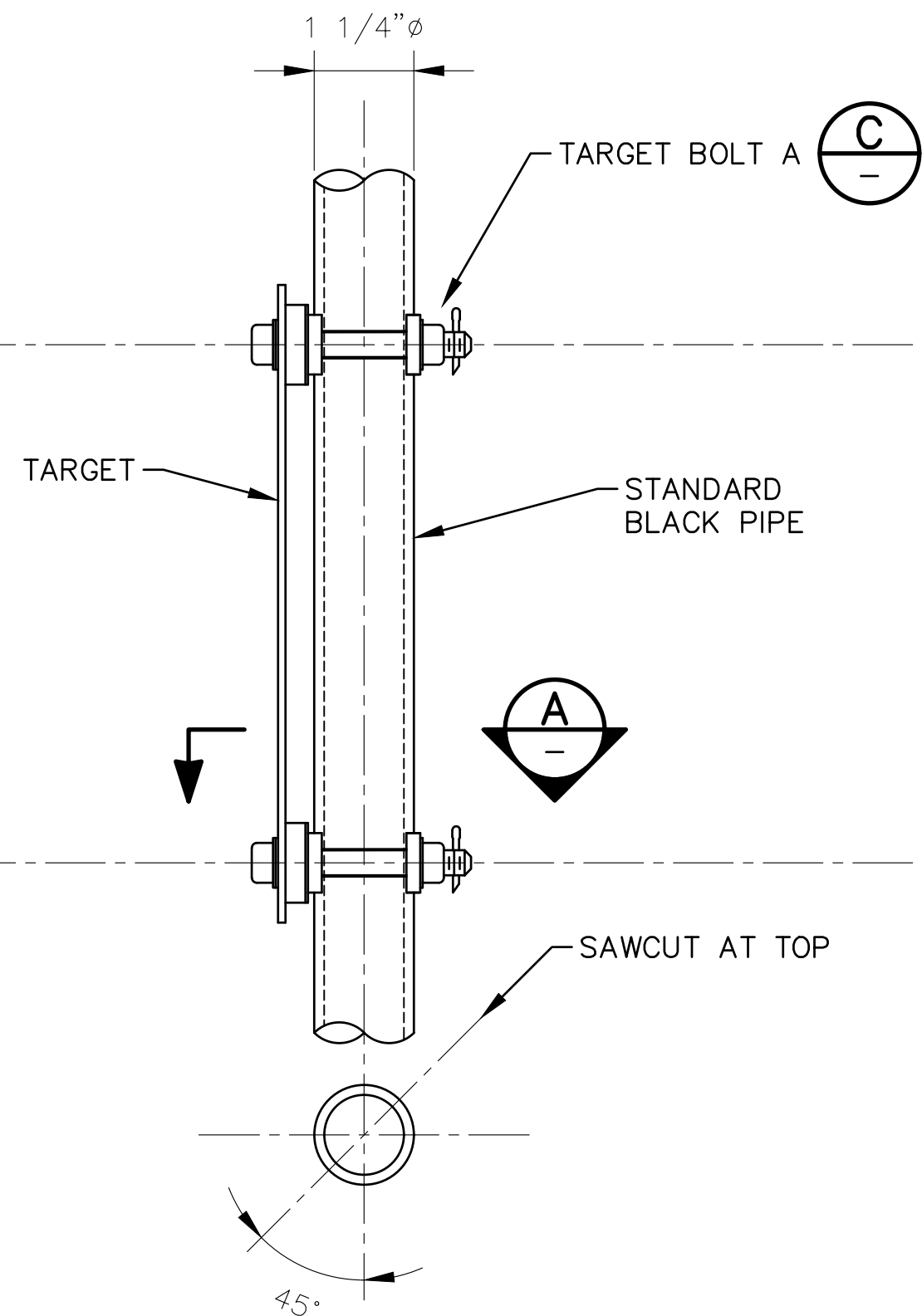
												PENINSULA CORRIDOR JOINT POWERS BOARD						ENGINEERING STANDARD DRAWINGS						CADD FILE NAME: SD—9107							
												APPROVED BY: <i>Bin Zhang</i> DIRECTOR, ENGINEERING												RIGHT—OF—WAY SIGNAGE WHISTLING BOARD AND STATION ONE MILE SIGN						REV:	EDITION: FIFTH
																								SCALE: NTS							
																								STANDARD DRAWING NO.: SD—9107							
010126						FIFTH EDITION																									
REV	DATE	BY	CHK	APP	DESCRIPTION	REV	DATE	BY	CHK	APP	DESCRIPTION	REV	DATE	BY	CHK	APP	DESCRIPTION	REV	DATE	BY	CHK	APP	DESCRIPTION	REV	DATE	BY	CHK	APP	DESCRIPTION		



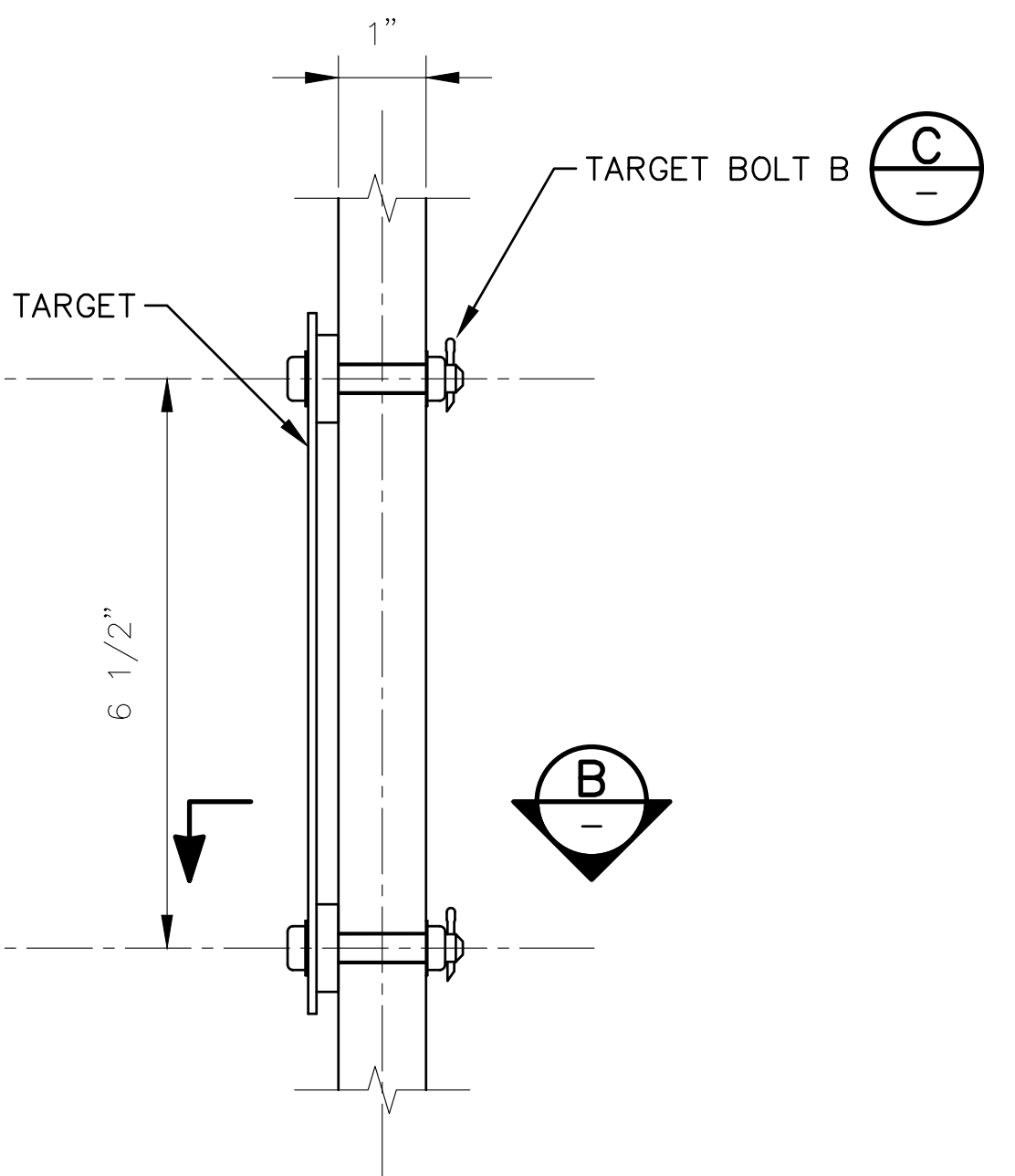
DERAIL SWITCH SIGN
ELEVATION
SCALE: NOT TO SCALE



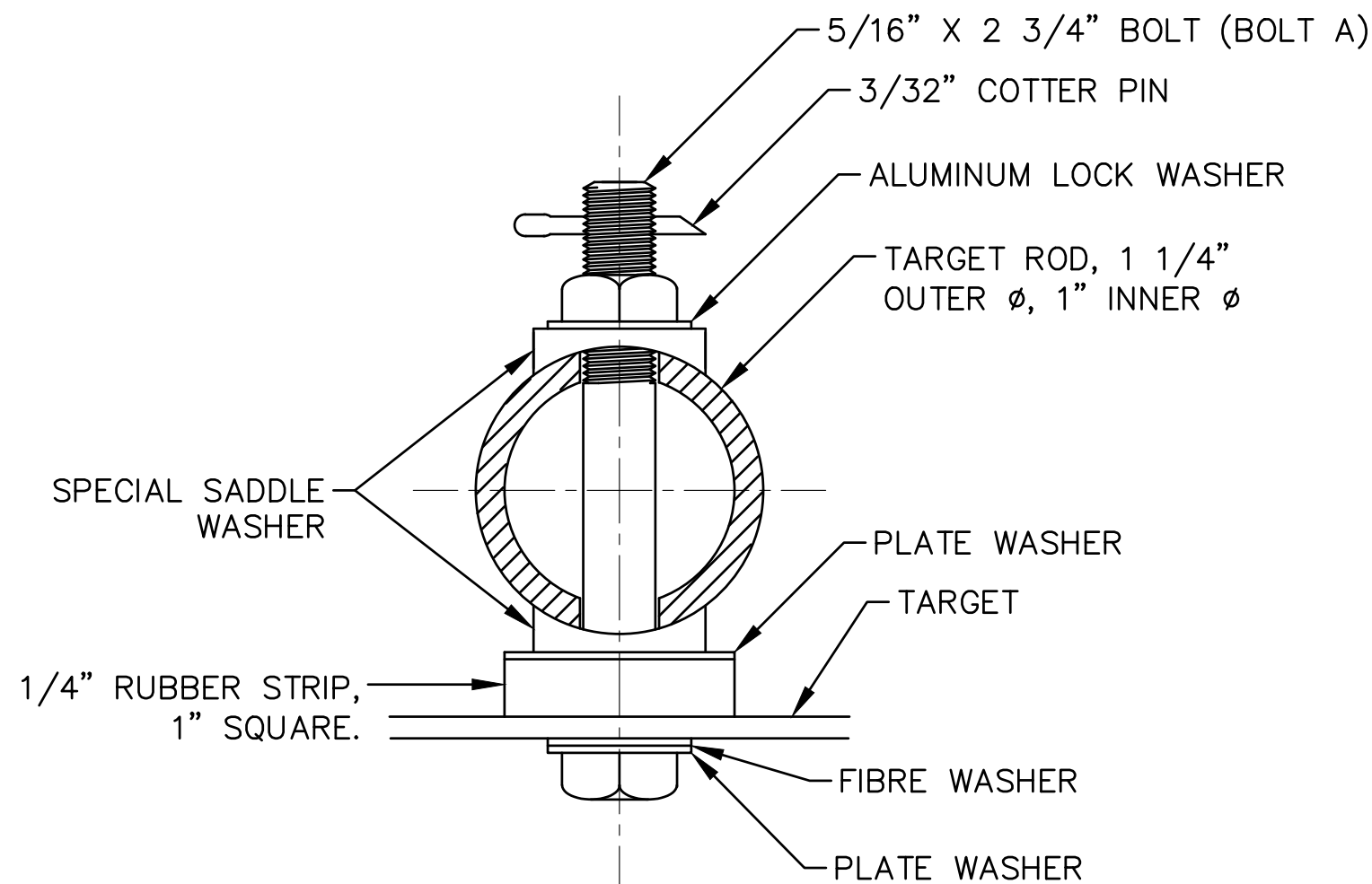
DERAILING SWITCH TARGET
DETAIL
SCALE: NOT TO SCALE



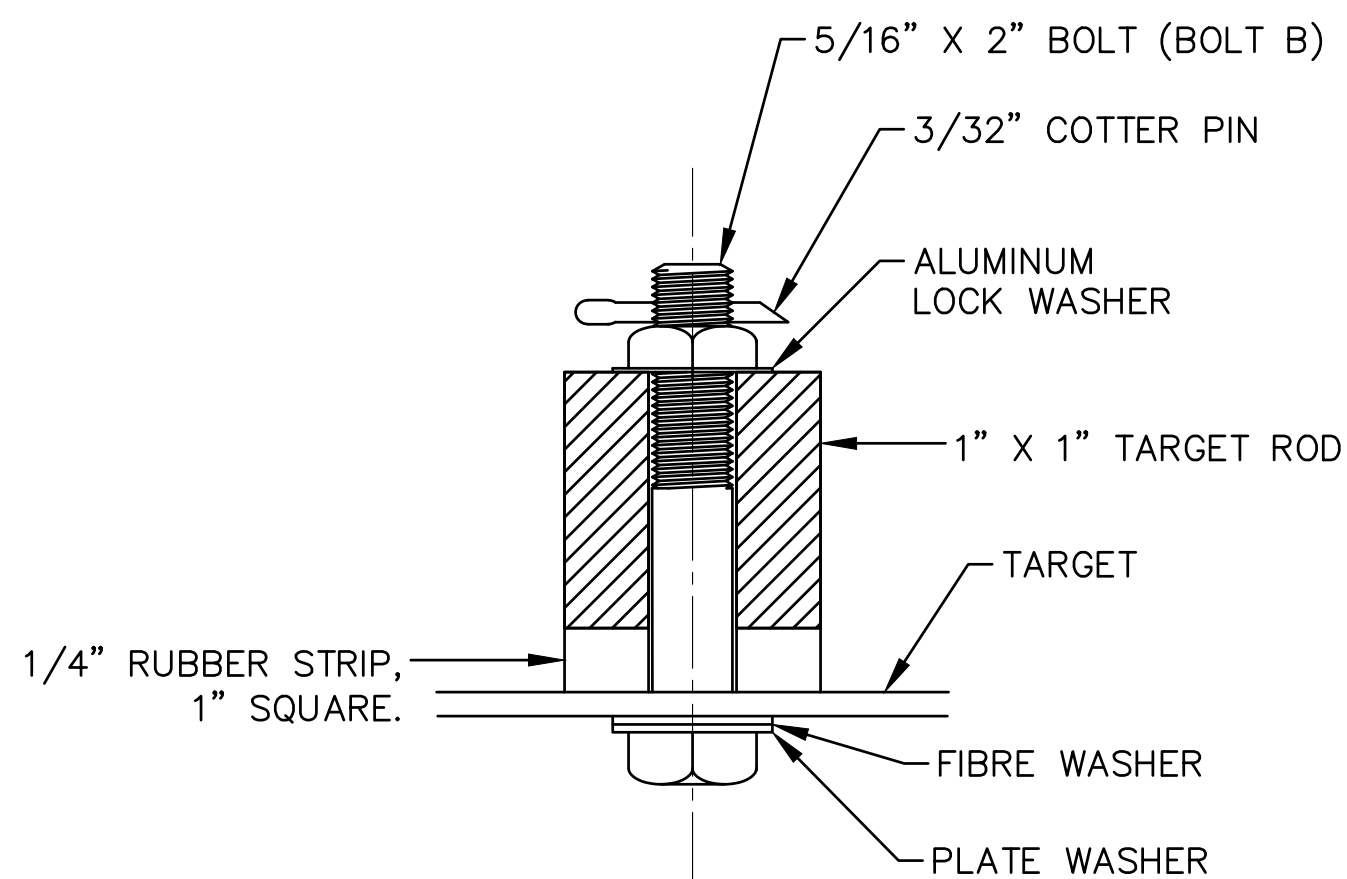
CIRCULAR TARGET ROD
DETAIL
SCALE: NOT TO SCALE



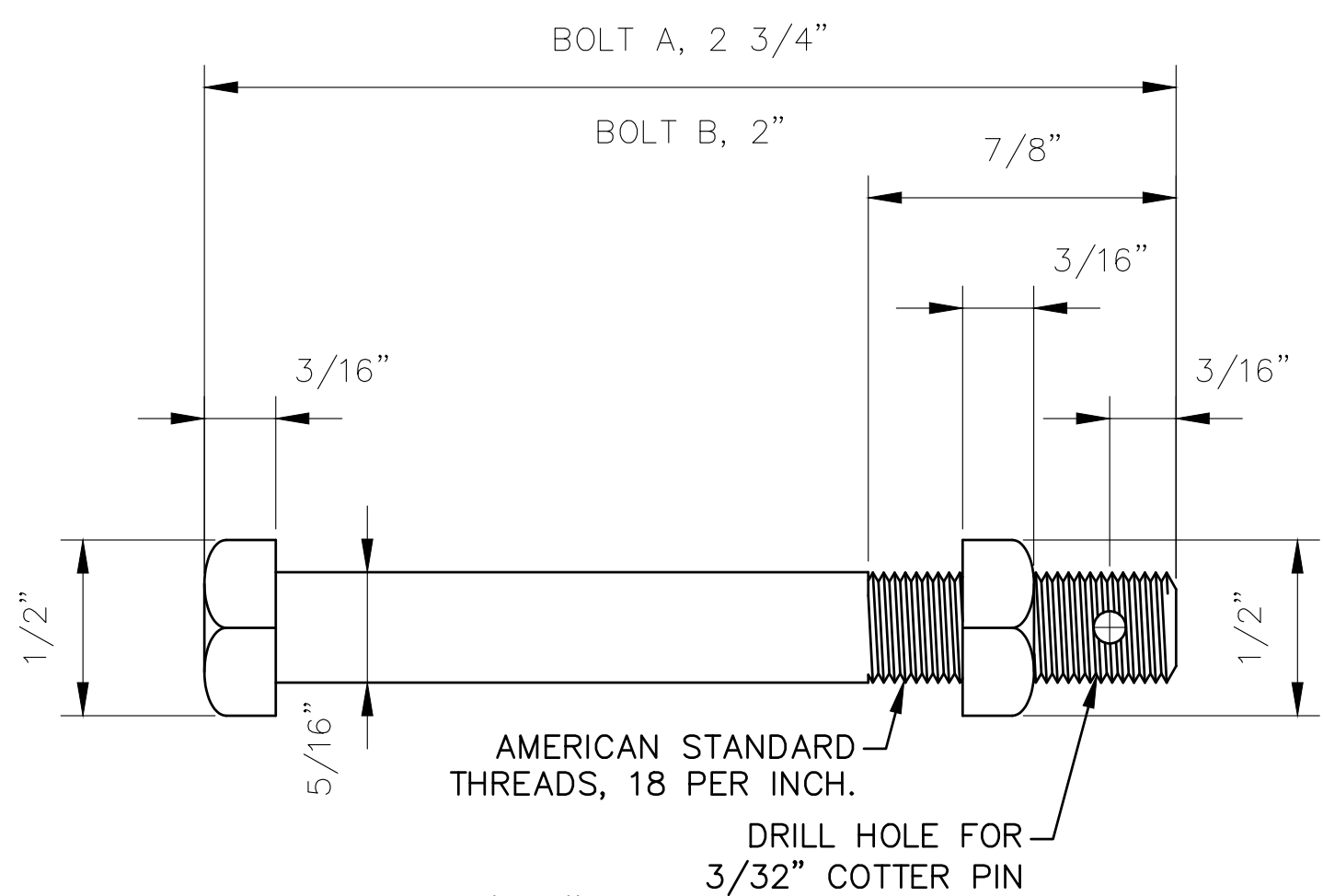
SQUARE TARGET ROD
DETAIL
SCALE: NOT TO SCALE



CIRCULAR TARGET ROD
SECTION A
SCALE: NOT TO SCALE



SQUARE TARGET ROD
SECTION B
SCALE: NOT TO SCALE



5/16" TARGET BOLT
DETAIL C
SCALE: NOT TO SCALE

PENINSULA CORRIDOR JOINT POWERS BOARD

APPROVED BY:

Bin Zhang

DIRECTOR, ENGINEERING

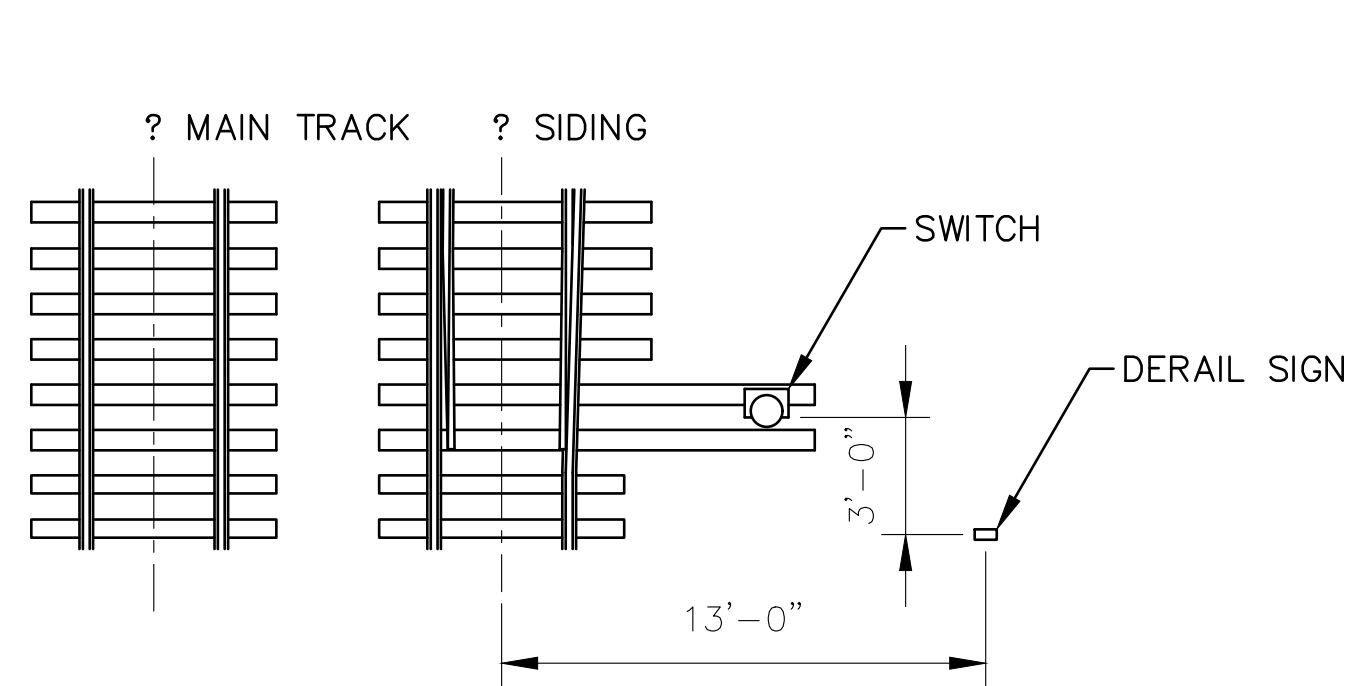


ENGINEERING STANDARD DRAWINGS

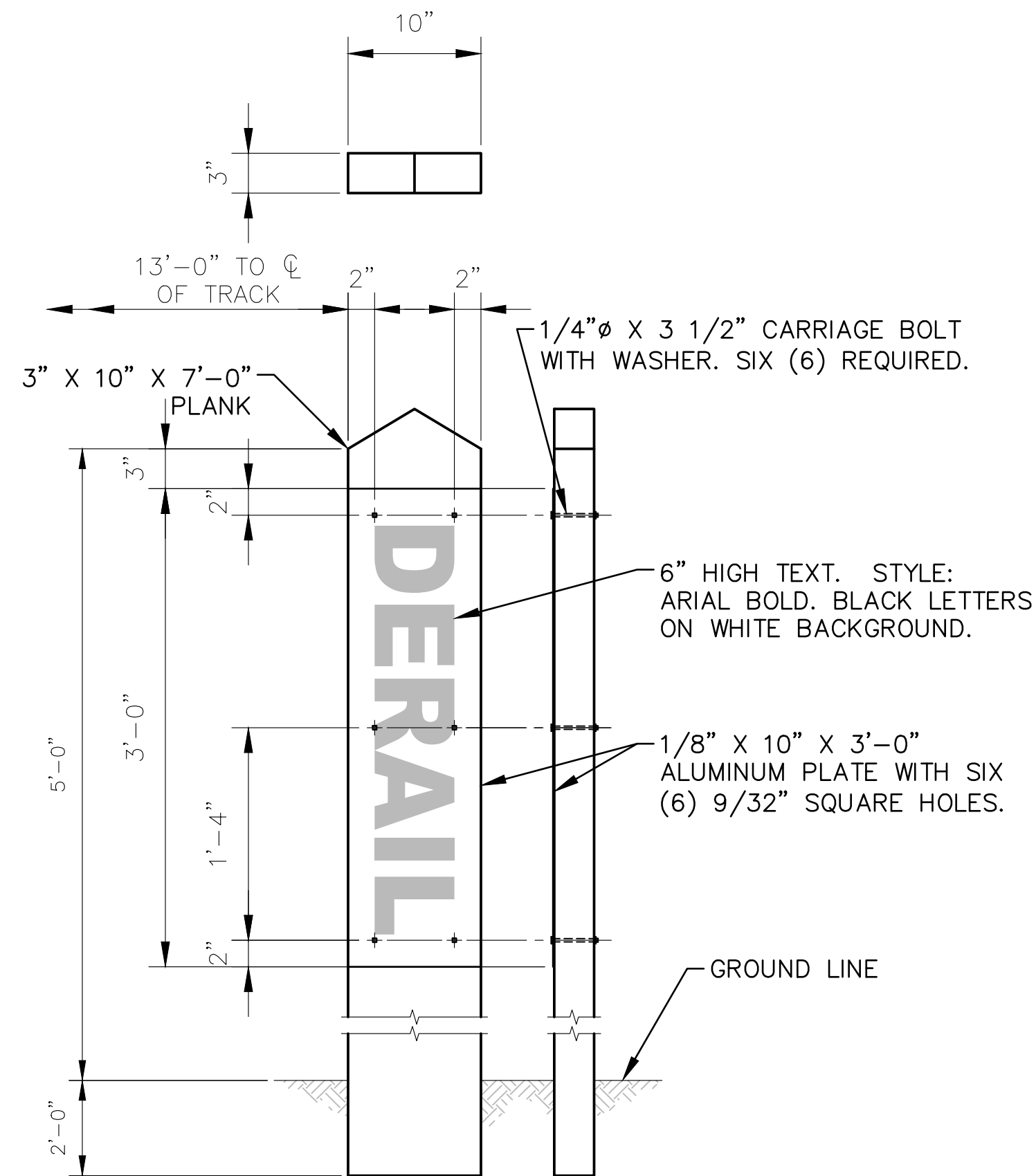
RIGHT-OF-WAY
SIGNAGE
ATTEND TO DERAILING SWITCH SIGN

CADD FILE NAME:
SD-9108
REV: EDITION:
FIFTH
SCALE:
NTS
STANDARD DRAWING NO.:
SD-9108

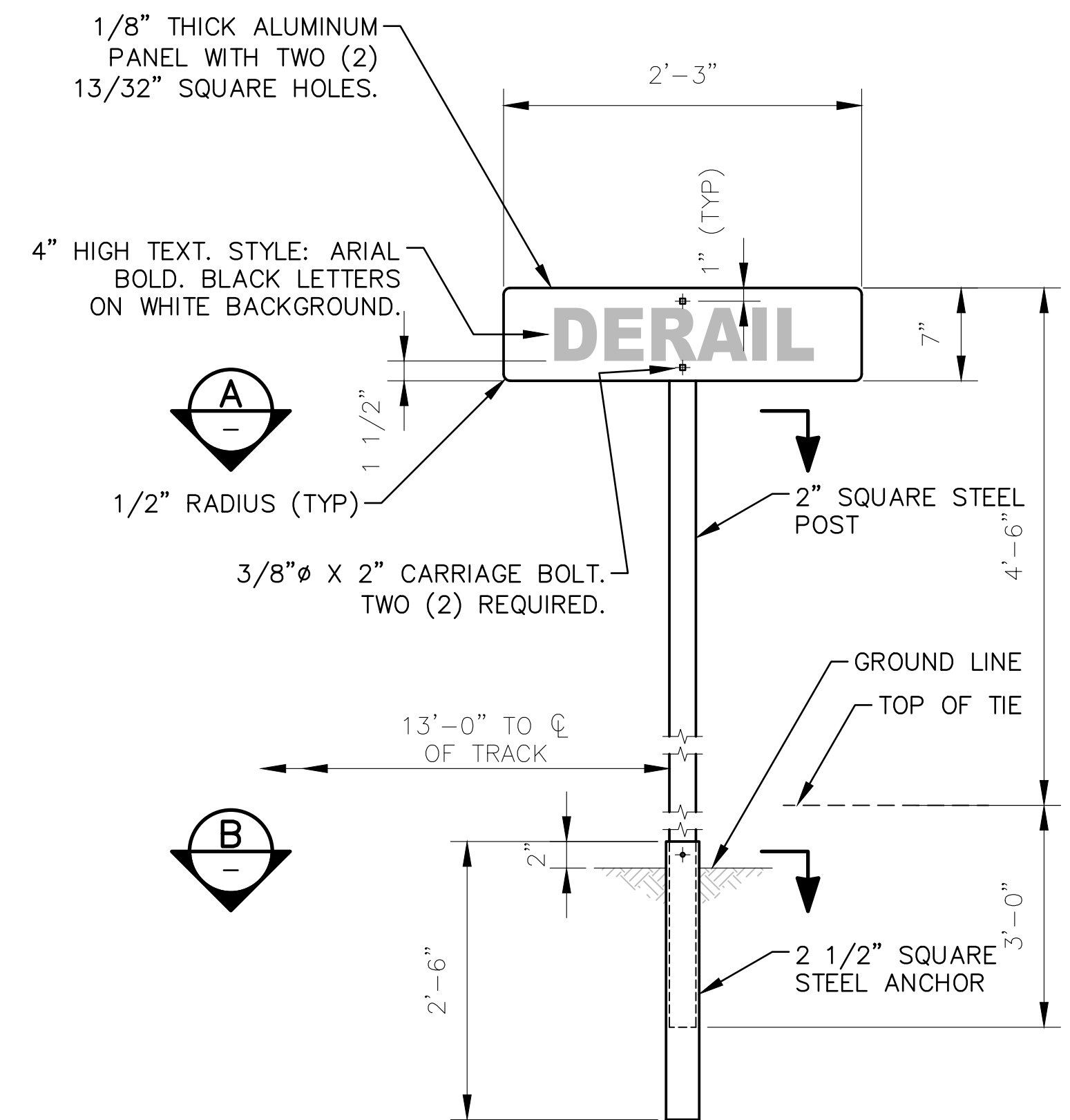
REV	DATE	BY	CHK	APP	DESCRIPTION	REV	DATE	BY	CHK	APP	DESCRIPTION
010126					FIFTH EDITION						



DERAIL SIGN LOCATION
PLAN
SCALE: NOT TO SCALE



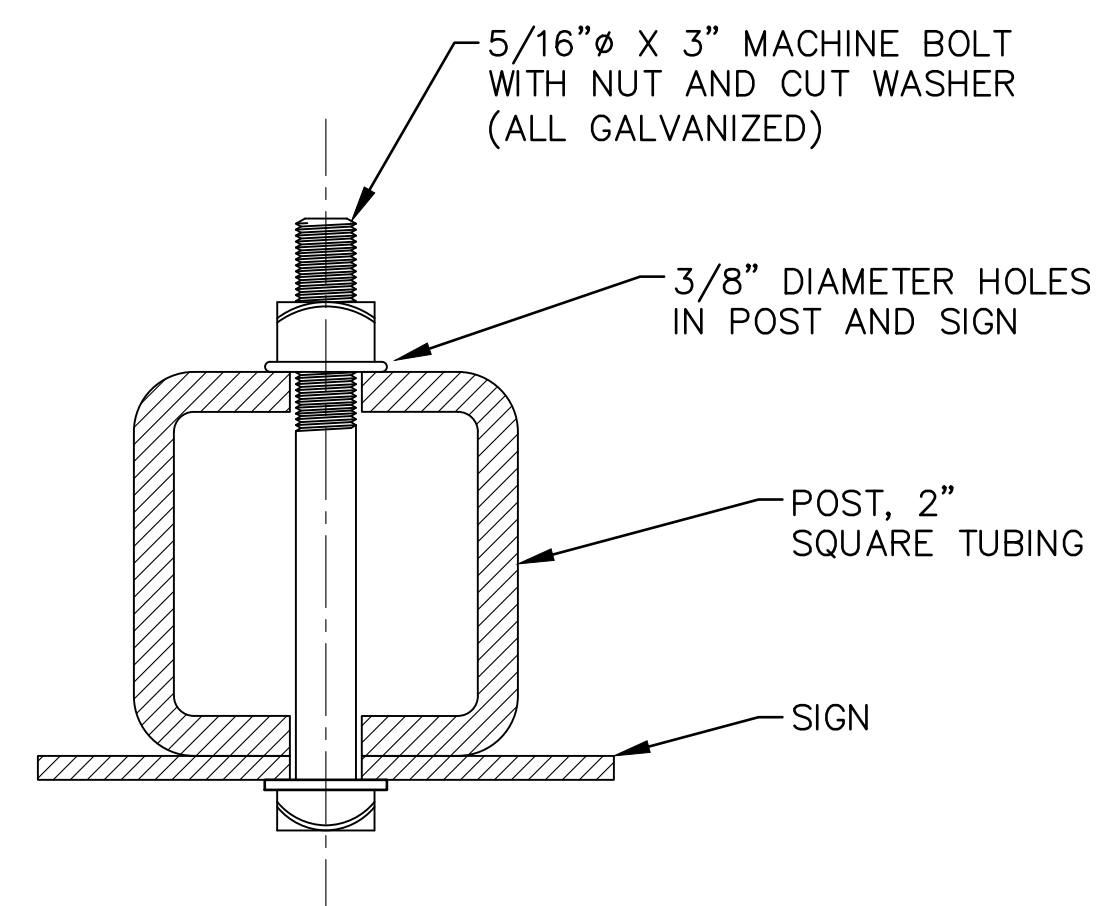
TYPE A



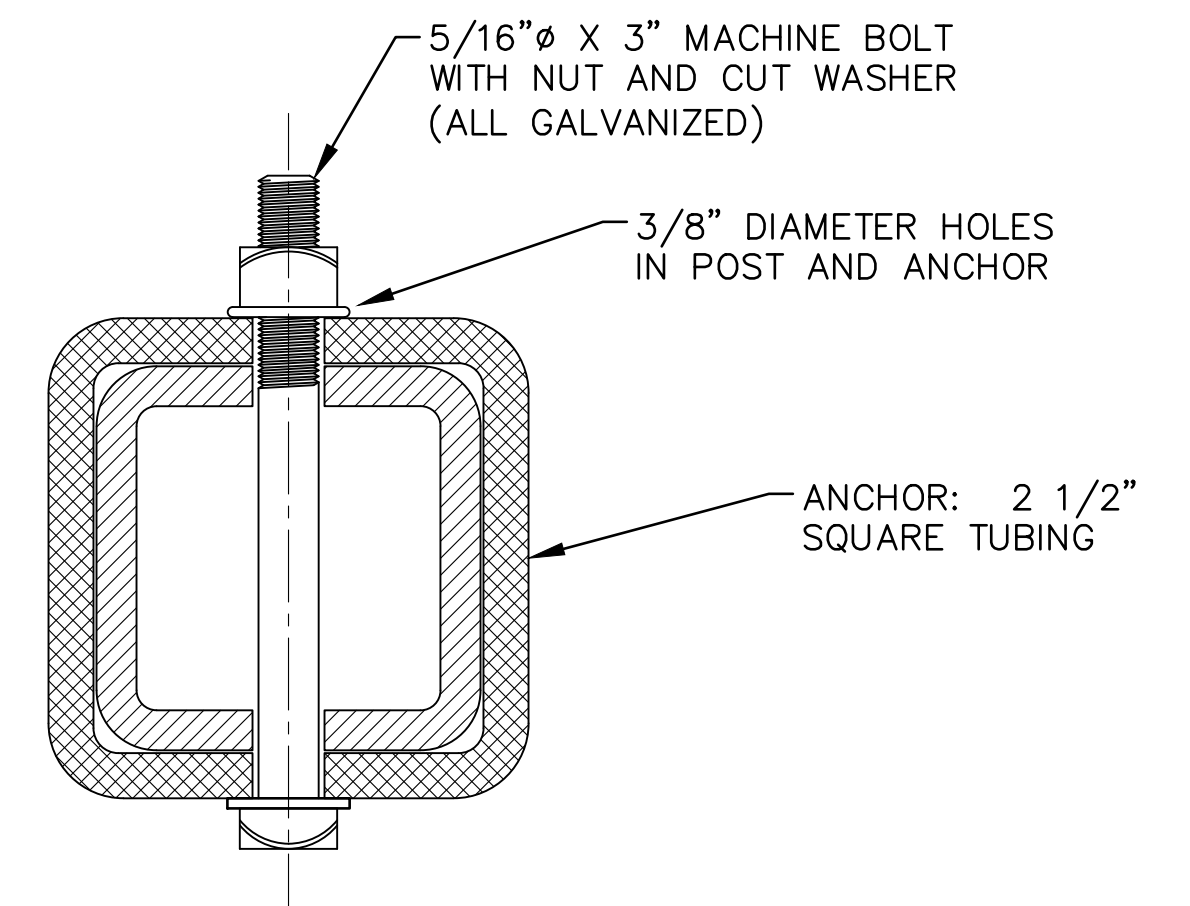
TYPE B

DERAIL SIGNS
ELEVATION
SCALE: NOT TO SCALE


NOTE:
TYPE A AND TYPE B SIGNS CONFORM
TO CALIFORNIA STATE LAW.



THROUGH SIGN AND POST
SECTION
SCALE: NOT TO SCALE



THROUGH ANCHOR AND POST
SECTION
SCALE: NOT TO SCALE

										PENINSULA CORRIDOR JOINT POWERS BOARD					ENGINEERING STANDARD DRAWINGS					CADD FILE NAME: SD-9109						
										APPROVED BY: <div>Bin Zhang</div> <div>DIRECTOR, ENGINEERING</div>										RIGHT-OF-WAY SIGNAGE DERAIL SIGN					REV:	EDITION: FIFTH
																									SCALE:	NTS
010126					FIFTH EDITION															STANDARD DRAWING NO.: SD-9109						
REV	DATE	BY	CHK	APP	DESCRIPTION					REV	DATE	BY	CHK	APP												