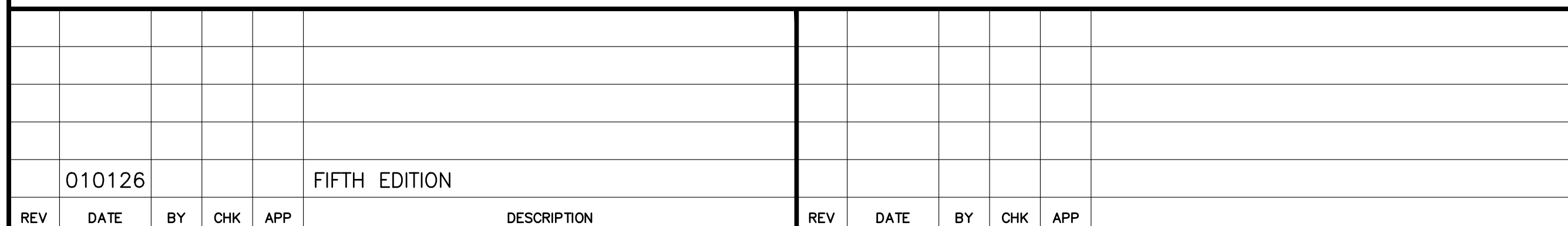
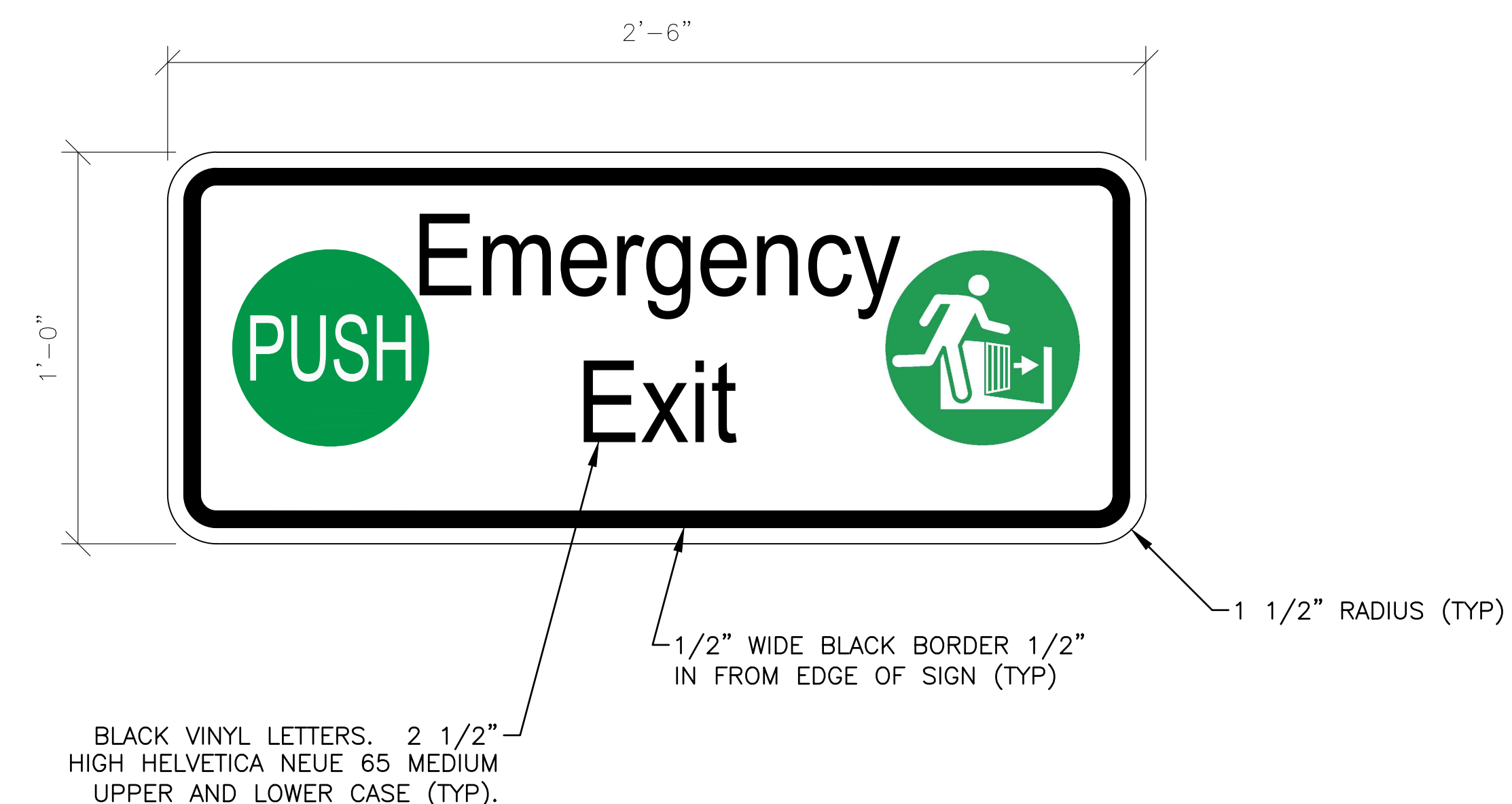
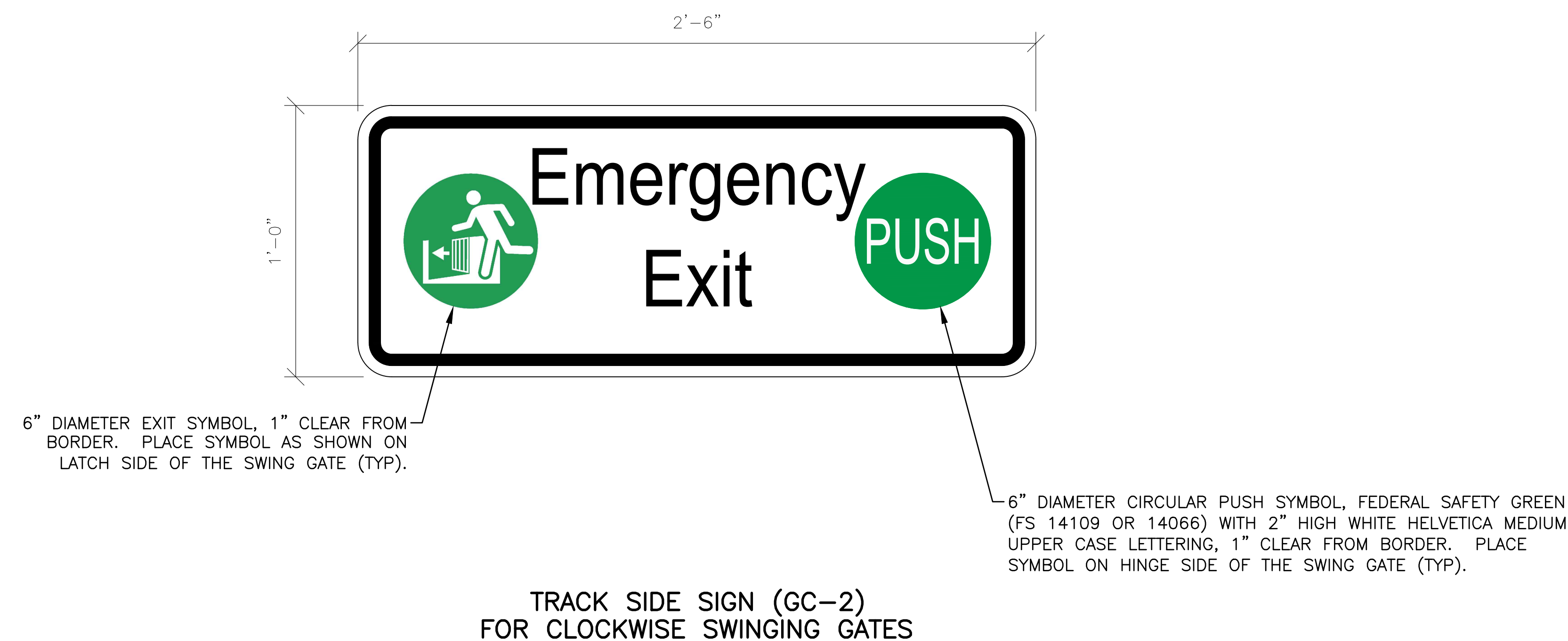
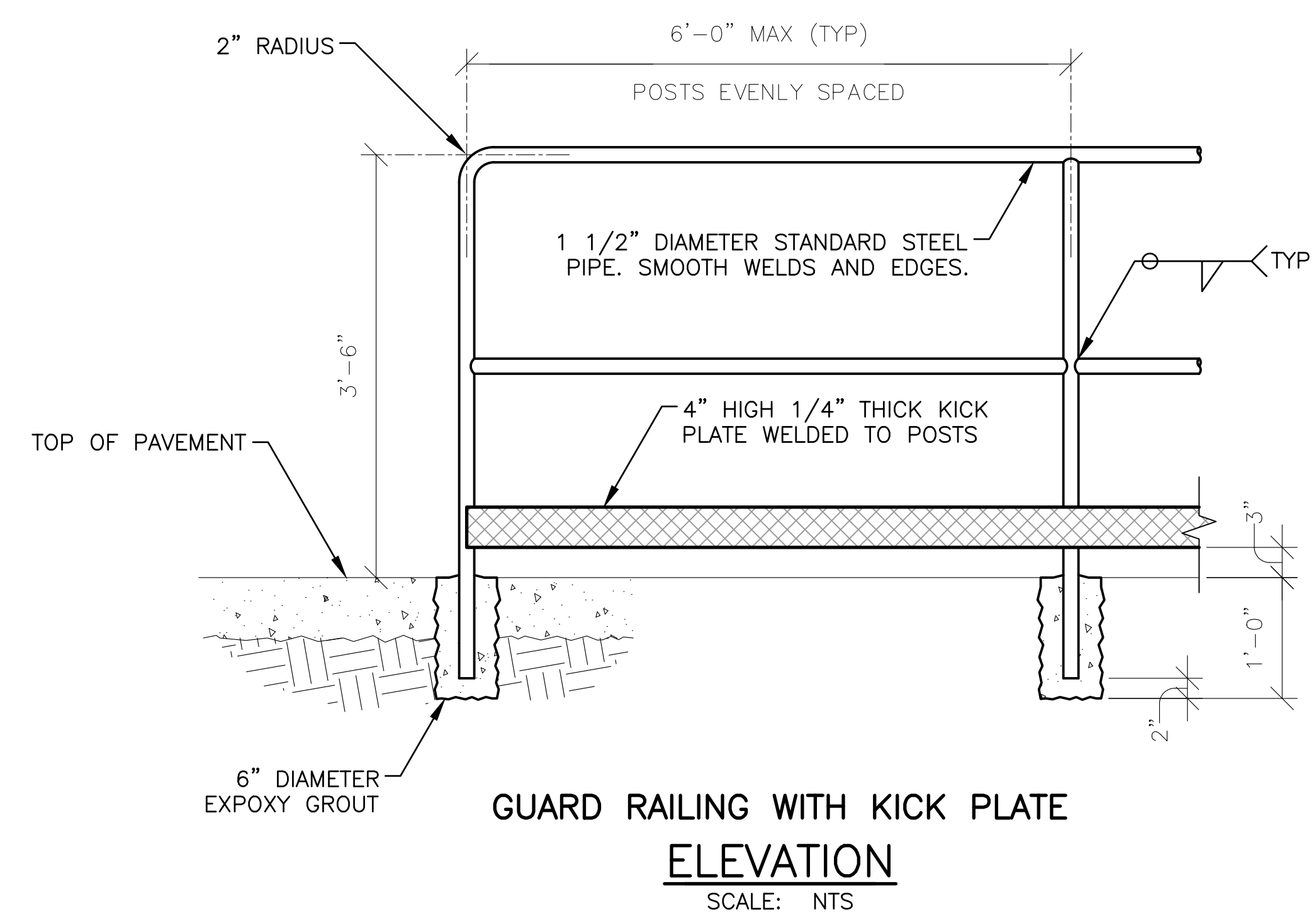
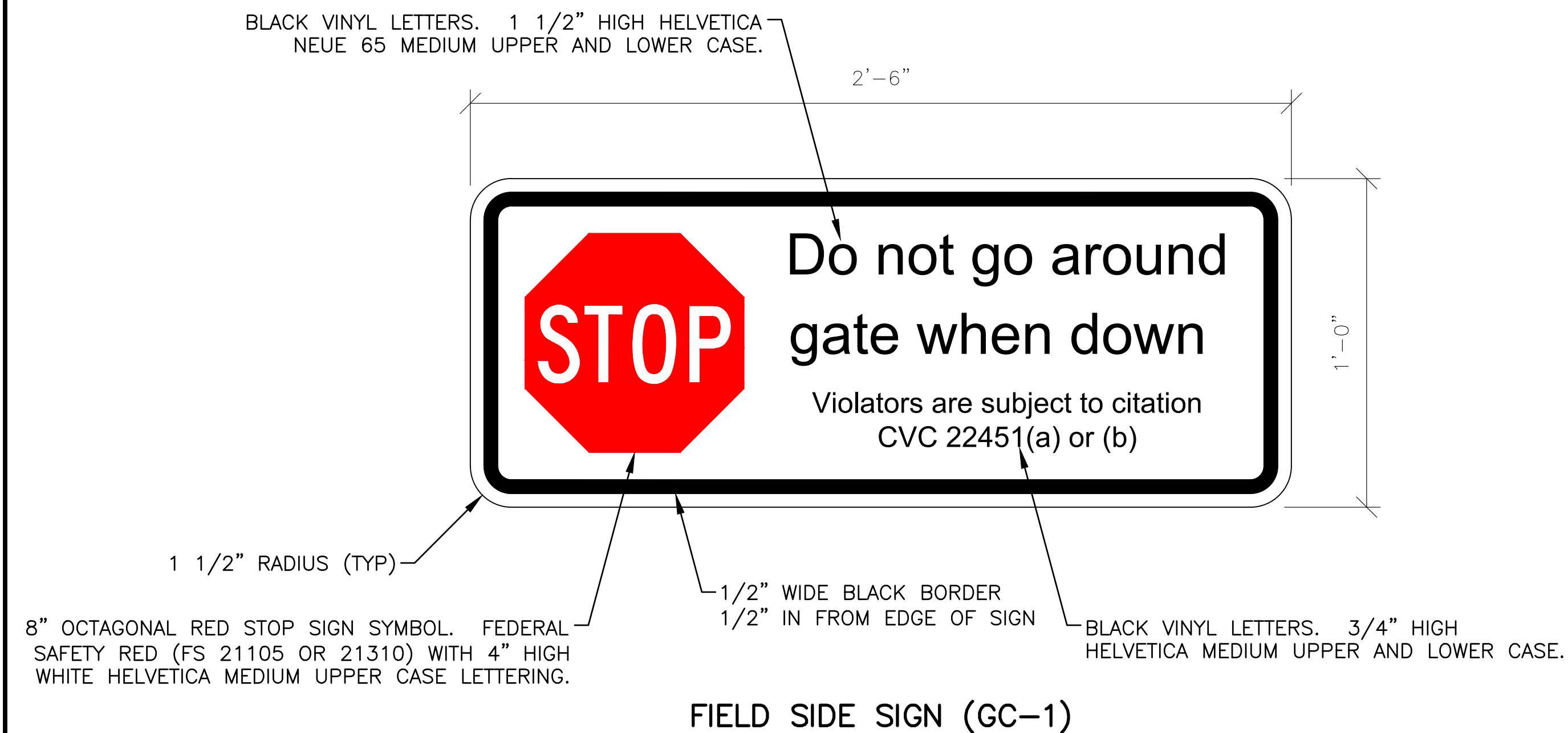


										PENINSULA CORRIDOR JOINT POWERS BOARD		ENGINEERING STANDARD DRAWINGS		CADD FILE NAME: SD-7004	
										APPROVED BY: <i>Bin Zhang</i> DIRECTOR, ENGINEERING		Caltrain®		GRADE CROSSINGS SIDEWALKS AND CROSSINGS	
010126					FIFTH EDITION									REV: EDITION: FIFTH	
														SCALE: NOT TO SCALE	
REV DATE BY CHK APP DESCRIPTION					REV DATE BY CHK APP									STANDARD DRAWING NO.: SD-7004	







SWING GATE SIGNAGE DETAILS

SD-7005 **7** SD-7006 DETAIL  
SCALE: NTS

NOTES:

1. SEE SD-3300 FOR SIGN REQUIREMENTS AND SPECIFICATIONS.
2. SIGN PANELS: 0.120" THICK REFLECTORIZED WHITE ALUMINUM.
3. GUARD RAILING AND KICK PLATE SHALL BE HOT DIPPED GALVANIZED AFTER FABRICATION.

												PENINSULA CORRIDOR JOINT POWERS BOARD		ENGINEERING STANDARD DRAWINGS		CADD FILE NAME: SD-7006	
												APPROVED BY: <i>Bin Zhang</i>		GRADE CROSSINGS PEDESTRIAN CROSSING		REV:	EDITION: FIFTH
												Caltrain		GATE, RAILING AND SIGNAGE SHEET 2 OF 2		SCALE: NOT TO SCALE	
010126 FIFTH EDITION																STANDARD DRAWING NO.: SD-7006	
REV	DATE	BY	CHK	APP	DESCRIPTION	REV	DATE	BY	CHK	APP	DESCRIPTION	DIRECTOR, ENGINEERING					