

Update on Caltrain Safety Trespasser and Suicide Prevention Safety Plan

**JPB TOPS Committee
December 17, 2025**



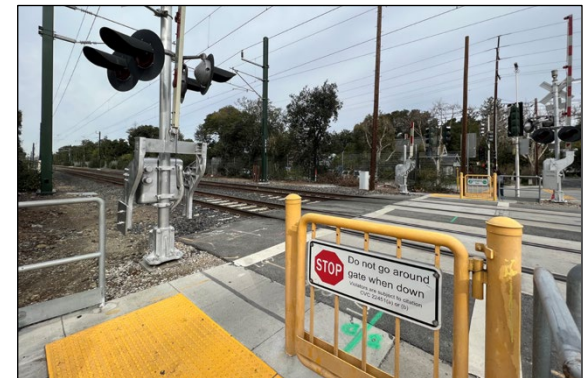
Overview

- Safety – First and Always is Caltrain's #1 Core Value
- Trespasser/Suicide Prevention Safety Plan
- Partnering/Outreach
- Public Safety Campaigns
- Grade Crossings Safety Enhancements
- Fencing and Barriers
- Vegetation Removal
- Enforcement

This plan overlaps with the corridor crossing strategy - safety enhancement program

Trespasser Prevention Safety Plan Overview –The Why

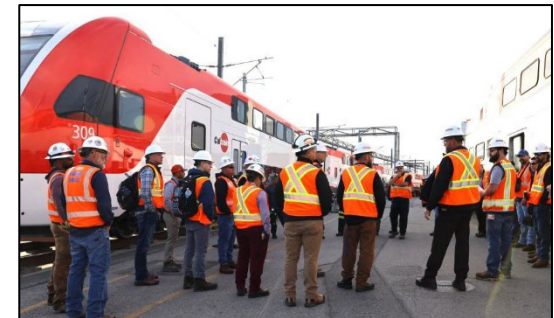
- Caltrain is a regional railroad operating in a dense corridor, with 31 stations and 71 at-grade crossings on an unsealed corridor.
- Trespasser and vehicle strikes, including suicides, are a serious issue for Caltrain operations and communities.
- These incidents cause tremendous negative impacts on family members, friends, train crews, passengers, witnesses, emergency responders and rail operations through delays and damage to property and reputation.



Understanding the Risk

Caltrain is committed to a risk-based data-driven approach to Safety and Trespasser / Suicide prevention.

- Utilize Near Miss, Safety Reporting, Incident, Inspection data
- Prioritize based on trespasser/suicide data
- Risk Assessments of identified areas
- Determine most cost-effective solution(s) to reduce risk
- Implement solutions to address specific risks
- Monitor for effectiveness



Safety Plan Approach

Caltrain is committed to developing this plan to reduce trespasser suicide and the broad ranging impacts following the documented best practice of the “Three E’s” of rail safety: **Education, Engineering, and Enforcement.**



Education – Collaboration & Upstream Intervention

- Regional Mental Health (MH) and Operation Lifesaver Partnership Events
- Expand MH messaging on social media, on trains, at stations signs, sidewalk at high-risk locations (city collaboration)
- Crisis Lifeline Signage, Your life Matters, there is help (988)
- Employee / TASI:
 - MH / Suicide Awareness Training (most recently in Sept)
 - Explore proactive trauma counseling services



Broader Public Safety Campaigns

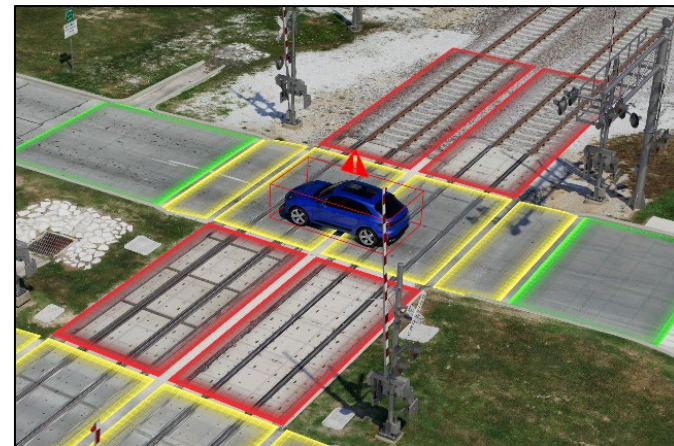
- Expanding the message, continuously...
- Operation Lifesaver
- External Safety Communications Strategy
- Social, Digital, Traditional Media, Partner Agencies
- Caltrans (Vehicle Messaging System), DMV
- Continued work with technology providers, enhanced railroad crossing notifications



Engineering

Means Restriction, Detection and Alert Technologies, and Environmental Deterrents:

- Fencing – SOGR, New Fencing Projects in High-Risk Areas; Full alignment risk assessment in progress
- Pedestrian Channelization/Barriers
- Grade crossings rapid enhancements
- CCTV
- AI intrusion detection technologies
- Clear cutting and vegetation removal



Crossing/Right of Way Detection & Monitoring

Intrusion Detection Pilot Project

- Alma St, Palo Alto – Utilize CCTV (LVT Camera) live feed
- Churchill Ave, Palo Alto – Intrusion Detection from Rail Sentry
- Rutgers University to produce statistics & analysis

CCTV – Cameras / Analytics / Installation Program

- At-grade crossings
- Stations & platforms
- Yard/Other access areas
- Phase 1: high visibility locations
- Phase 2: requires additional funding

Enforcement

Site enforcement, training and outreach. It requires the commitment of safety and security personnel from Caltrain, and municipalities.

- Grade Crossing Enforcement blitzes – ticketing
- License Plate Reader technology pilot
- Partnerships with Municipal Police Departments
 - Enforcement & secondary employment
- Increasing Transit Police Officers



Next Steps

- **December** – General direction and feedback from the board on recommendations
- **January** – Present to CAC
- **Feb TOPS** – Present implementation roadmap and budget for final adoption
- **March** – Present to Caltrain Board for final adoption

Questions and Feedback

