



City of Palo Alto **Grade Separation Project** **Churchill Avenue, Meadow Drive,** **and Charleston Road**

Churchill Avenue (with Seale Avenue)
Grade Separation Community Meeting
September 30, 2025



CITY OF
PALO ALTO

Caltrain Safety Enhancements

Caltrain completed two major safety upgrades in Palo Alto as part of its Enhanced Crossing Strategy pilot.

High-Security Fencing

- West side of tracks from University Avenue Station to Churchill Avenue
- Closed major corridor gap next to public property

Churchill Intersection Safety

- Surface markings, delineators, wider crosswalks with gates
- Solar-powered markers for nighttime
- Anti-trespass panels
- Rail Sentry/Al Lidar
- Waze/Google/Apple Maps collaboration to reduce driver confusion

Pilot & Next Steps

- Modeled after Broadway (Burlingame) and Churchill pilots
- Positive pilot results; corridor-wide expansion planned
- VTA expediting \$950k Measure B funding for remaining Palo Alto crossings (Palo Alto, Meadow, Charleston)



Meeting Purpose

- ✓ *Review draft refined concepts*
- ✓ *Receive community input to inform concept refinement and alternatives to advance*

Project Site





Current Project Phase



Funding

Total: \$20 Million (*VTA Measure B = \$14 M + FRA Rail Crossing Elimination = \$6 M*)

Deadline: Complete 35% Design and Environmental Documentation by the end of 2027

Preliminary Engineering and Environmental

2025			2026				2027			
Q2	Q3	Q4	Q1	Q2	Q3	Q4	Q1	Q2	Q3	Q4
Conceptual Refinement			15% Design		35% Design and Environmental					

We are here

Receive direction from City Council on which alternatives to advance to 15% Design.



June 2024 Council Direction

Churchill Avenue Alternatives

Motion approved to recommend Seale Avenue as the Bicycle and Pedestrian crossing location for the Partial Underpass Alternative at Churchill Avenue to advance into the Preliminary Engineering and Environmental Documentation phase, with the Bicycle and Pedestrian Crossing (Street Closure) alternative as a backup.

Meadow Drive and Charleston Road Alternatives

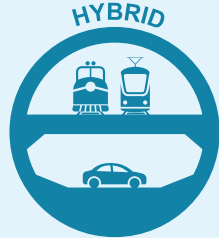
Motion approved to advance Hybrid (including mixed wall/column approach) and Underpass alternatives into the Preliminary Engineering and Environmental Documentation phase.

Council requested updates through the alternatives' refinements (during 15% design) with opportunities to change course and refocus on one option, if desired.

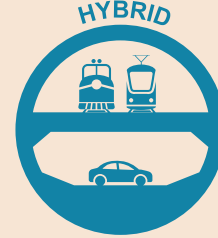


Conceptual Alternatives

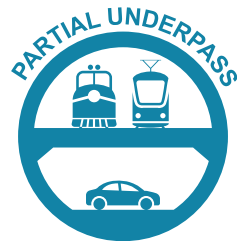
Meadow
Drive



Charleston
Road



Churchill
Avenue



Locally Preferred Alternative
(Includes Seale Bike/Ped Crossing)



**Bike/Ped Crossing
Backup**



Project Goals and Desired Outcomes



Improve **safety**



Establish **project footprint** for environmental clearance & minimize **environmental impacts**



Improve **mobility** and minimize **congestion**



Minimize **potential private property impacts**



Recent Technical Activities



Existing Conditions

- Topographic Survey
- Geotechnical Exploration
- Existing Utility Research



Technical Analysis

- Multimodal and Circulation Analysis
- Drainage and Stormwater Analysis



Design Development

- Basis of Design Development
- Constructability Workshops
- Risk Identification and Management

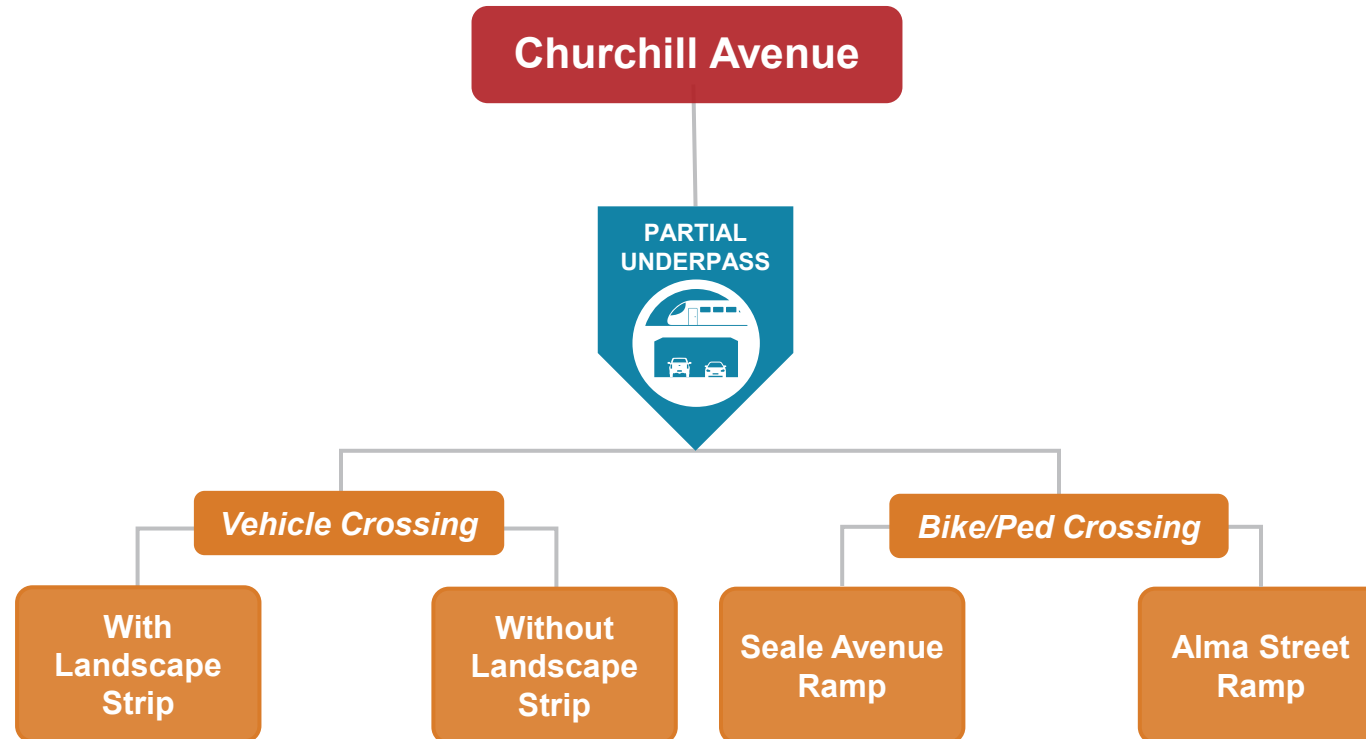


Summary of Concepts

CROSSING

ALTERNATIVE

OPTION

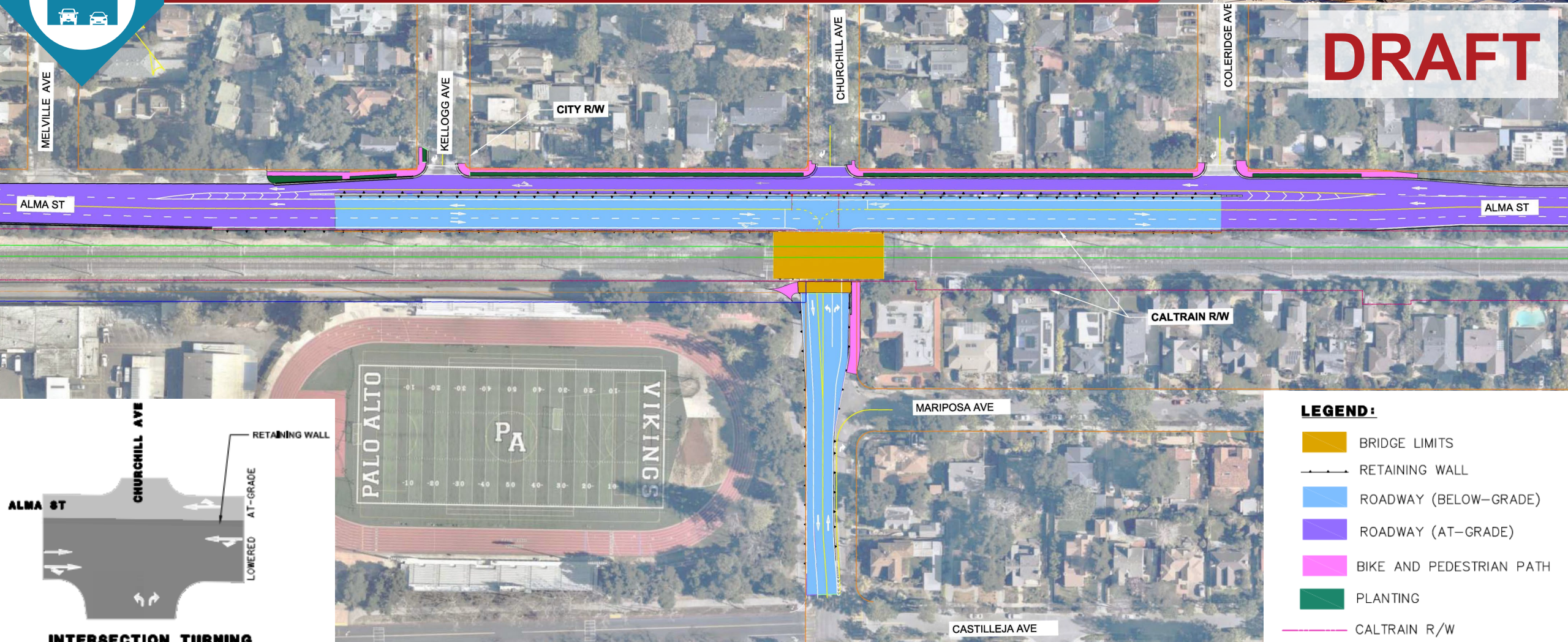


Churchill Avenue Partial Underpass

(With landscape strip between curb and sidewalk)

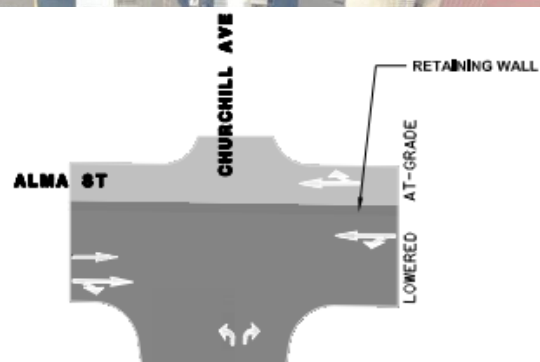


DRAFT



LEGEND:

- BRIDGE LIMITS
- RETAINING WALL
- ROADWAY (BELOW-GRADE)
- ROADWAY (AT-GRADE)
- BIKE AND PEDESTRIAN PATH
- PLANTING
- CALTRAIN R/W
- CITY R/W



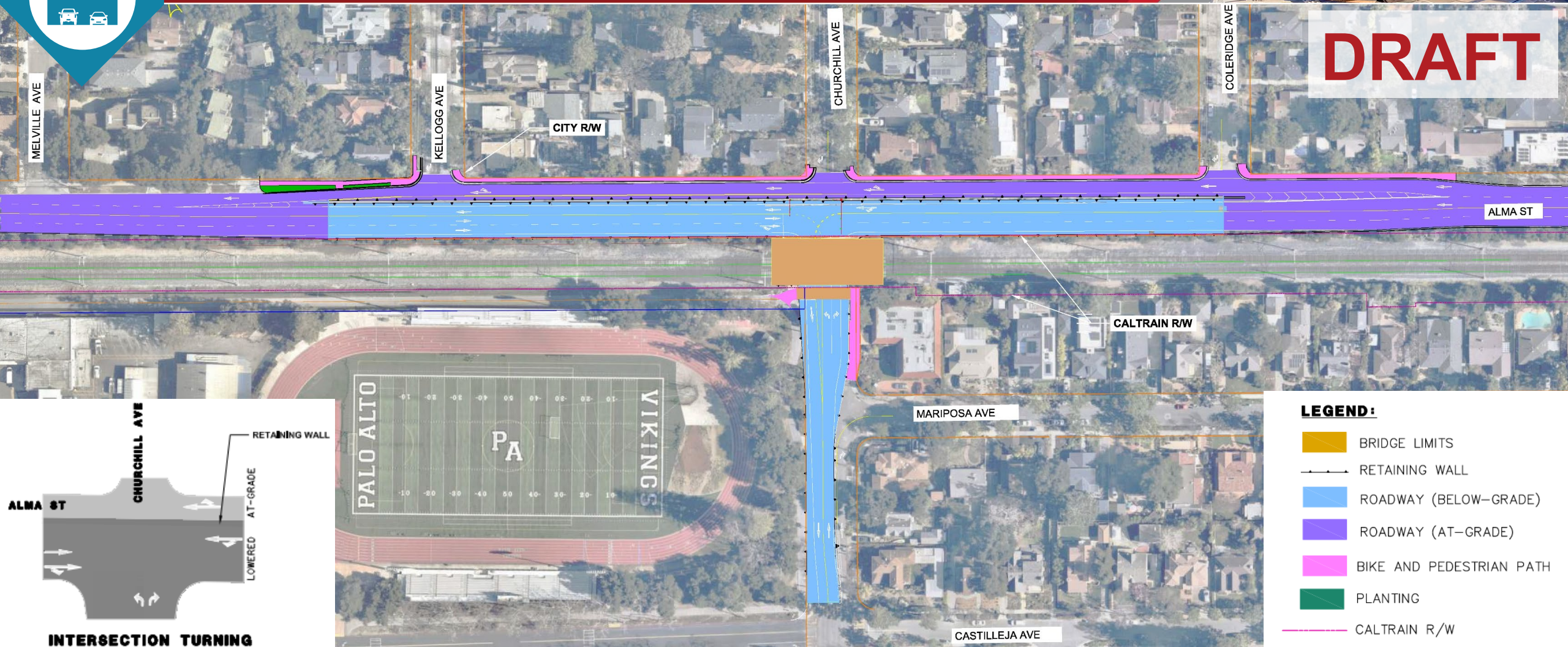
**INTERSECTION TURNING
MOVEMENT DIAGRAM**

Churchill Avenue Partial Underpass

(Without landscape strip between curb and sidewalk)

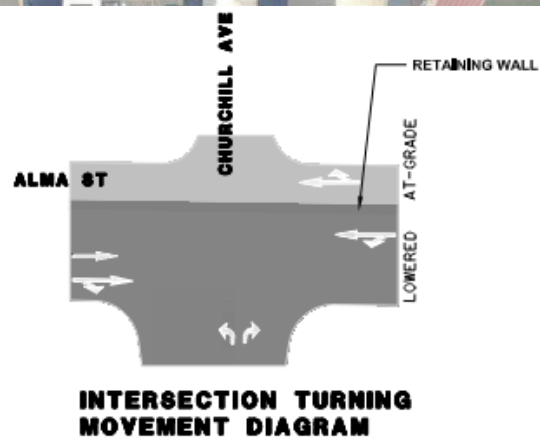


DRAFT



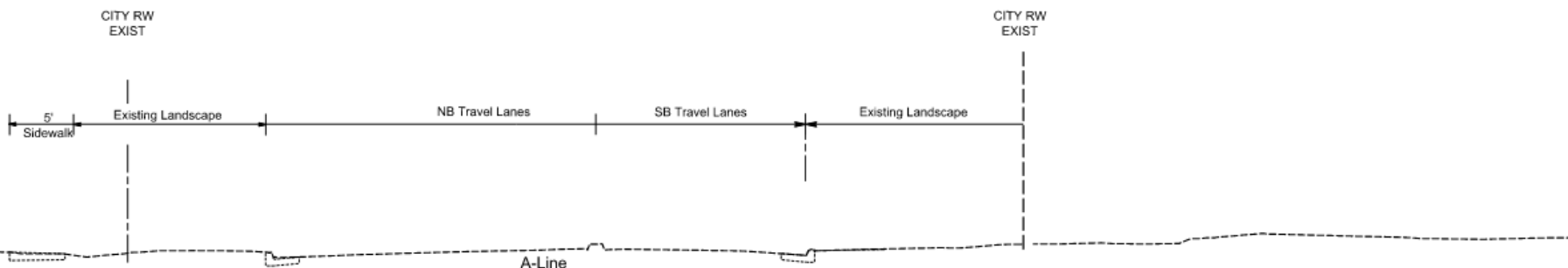
LEGEND:

- BRIDGE LIMITS
- RETAINING WALL
- ROADWAY (BELOW-GRADE)
- ROADWAY (AT-GRADE)
- BIKE AND PEDESTRIAN PATH
- PLANTING
- CALTRAIN R/W
- CITY R/W

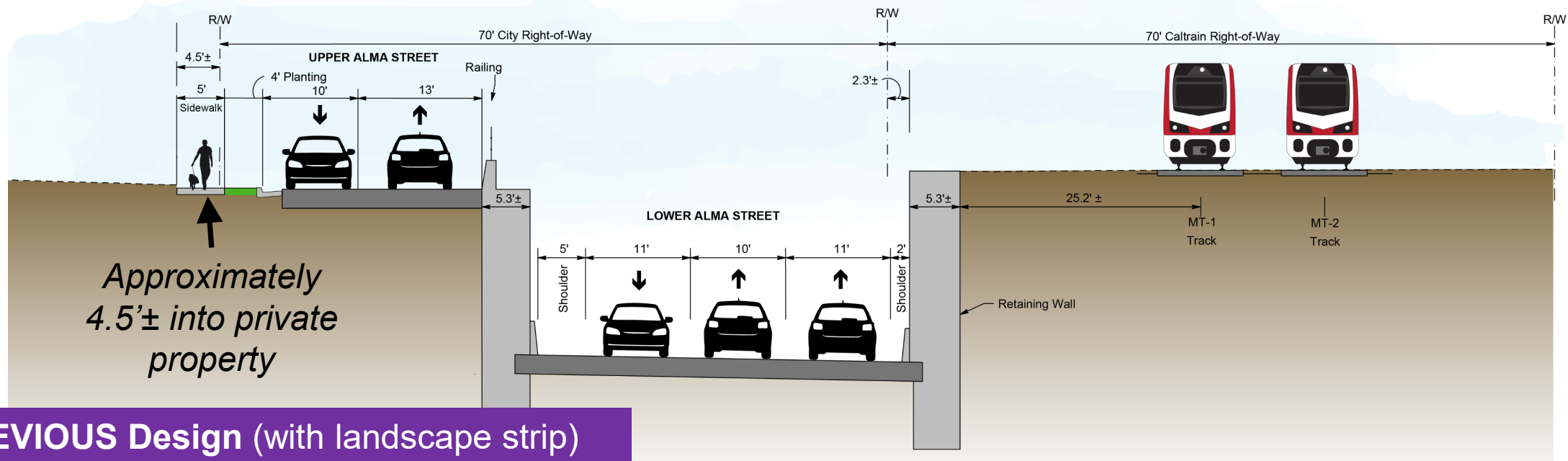


Churchill Avenue Partial Underpass (PREVIOUS)

Alma Street Cross-Section with Landscape Strip



Existing



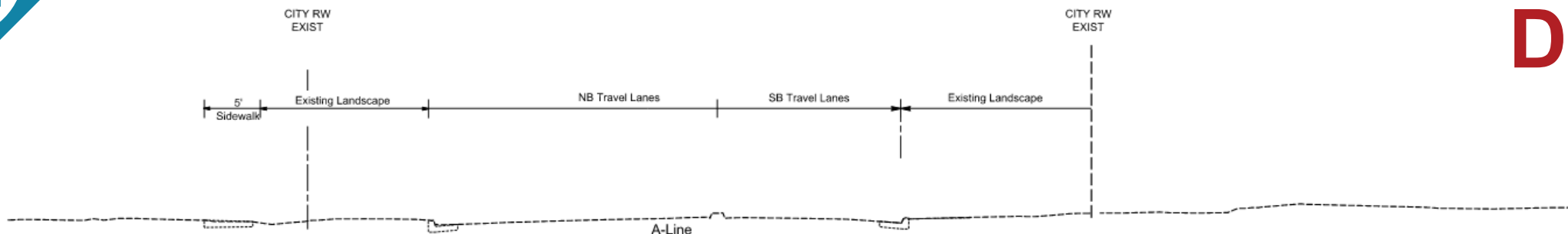
PREVIOUS Design (with landscape strip)

Churchill Avenue Partial Underpass

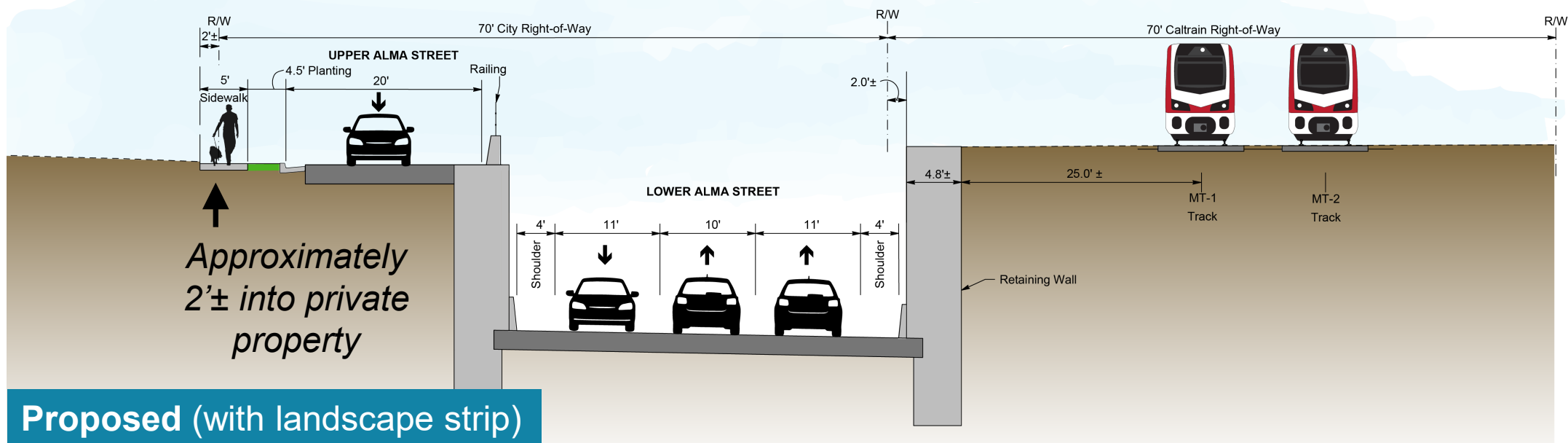
Alma Street Cross-Section with Landscape Strip



DRAFT



Existing



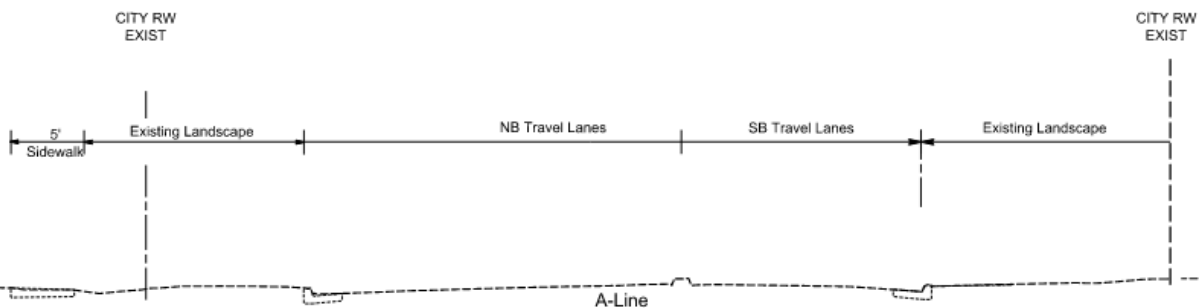
Proposed (with landscape strip)

Churchill Avenue Partial Underpass

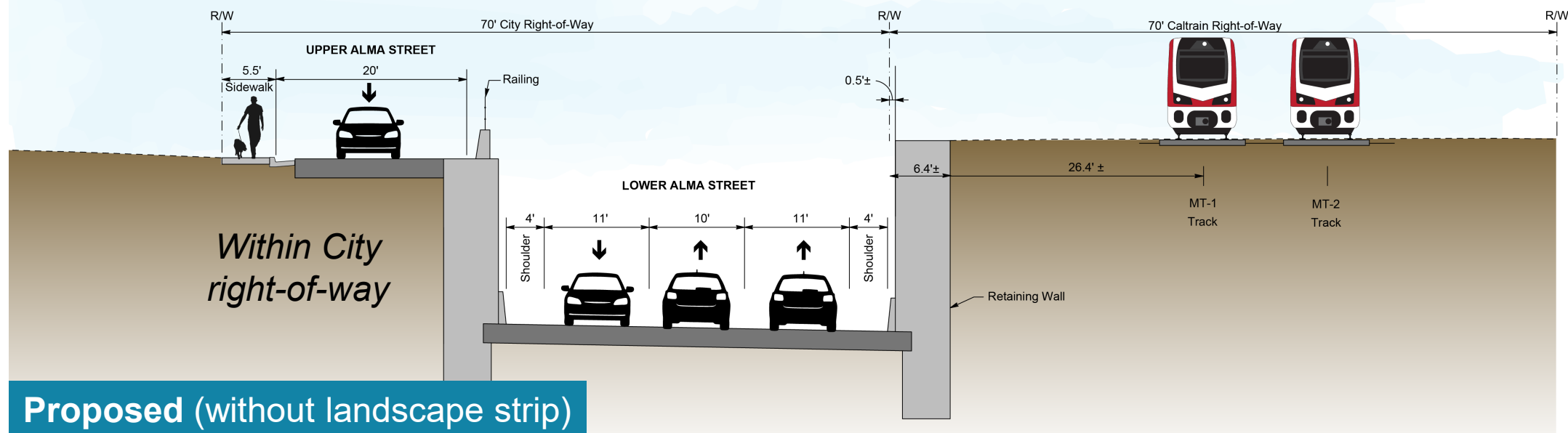
Alma Street Cross-Section without Landscape Strip



DRAFT



Existing



Proposed (without landscape strip)

PARTIAL
UNDERPASS



Churchill Avenue Partial Underpass

(Looking south on Alma Street – with landscape strip)



DRAFT

Churchill Ave.

Churchill Ave.

Alma St.

This rendering is shown for illustrative purposes only

PARTIAL
UNDERPASS



Churchill Avenue Partial Underpass

(Looking south on Alma Street – without landscape strip)



DRAFT

Churchill Ave.

Alma St.

Churchill Ave.

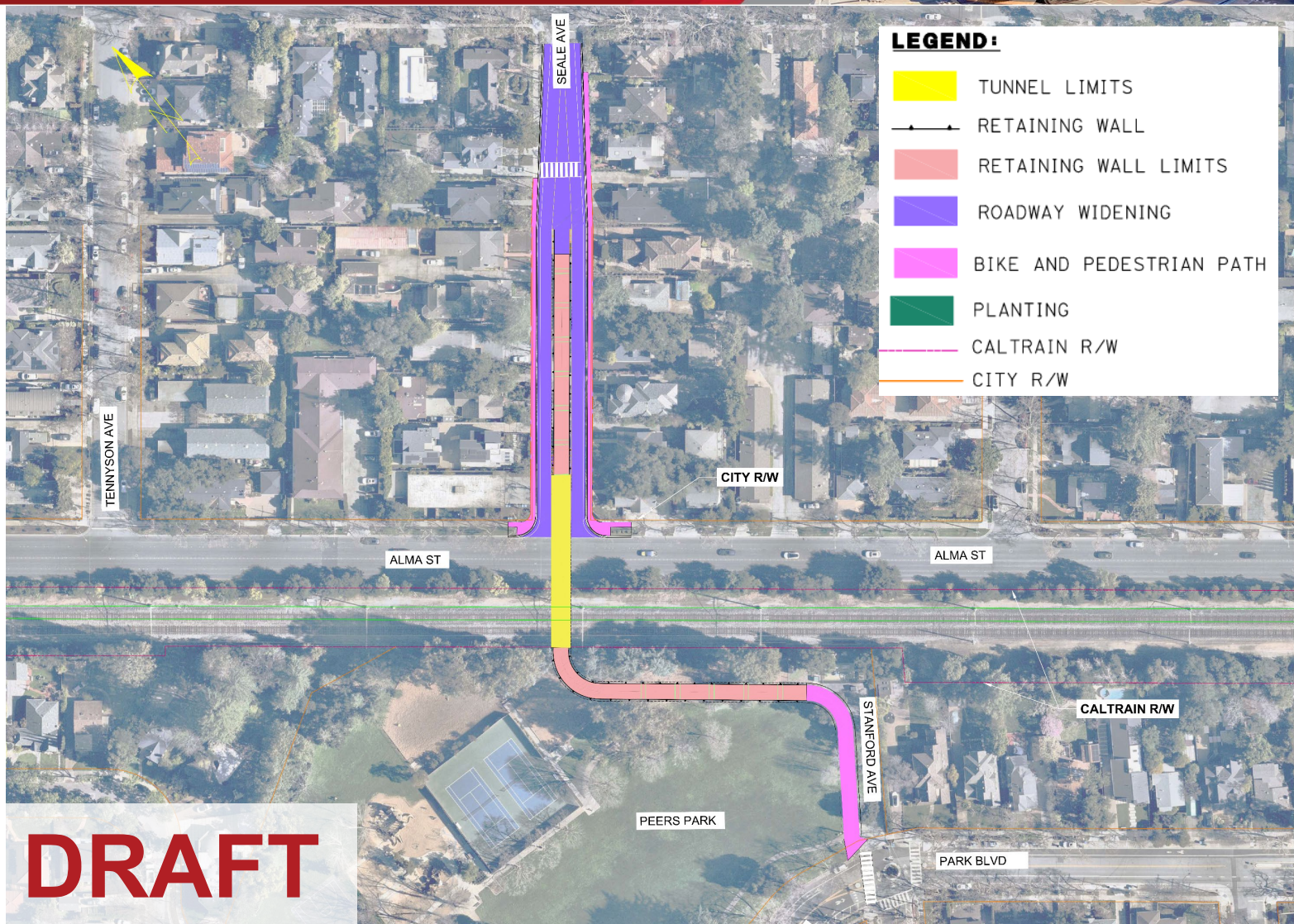
This rendering is shown for illustrative purposes only.

Seale Avenue: Seale Avenue Ramp



Bike/Ped Crossing

- East ramp centered in Seale Avenue
- Tunnel under Alma Street and railroad tracks
- West ramp connects to Park Boulevard near Stanford Avenue
- Removes on-street parking on Seale Avenue
- Potential partial property acquisition on Seale Avenue

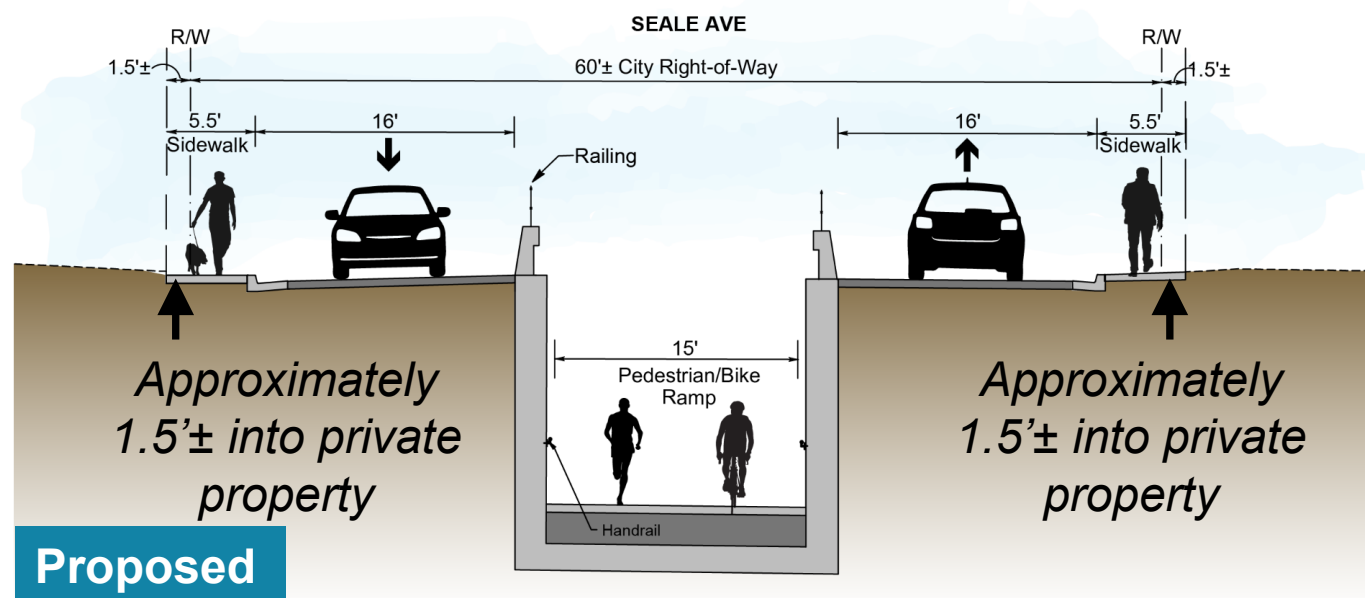
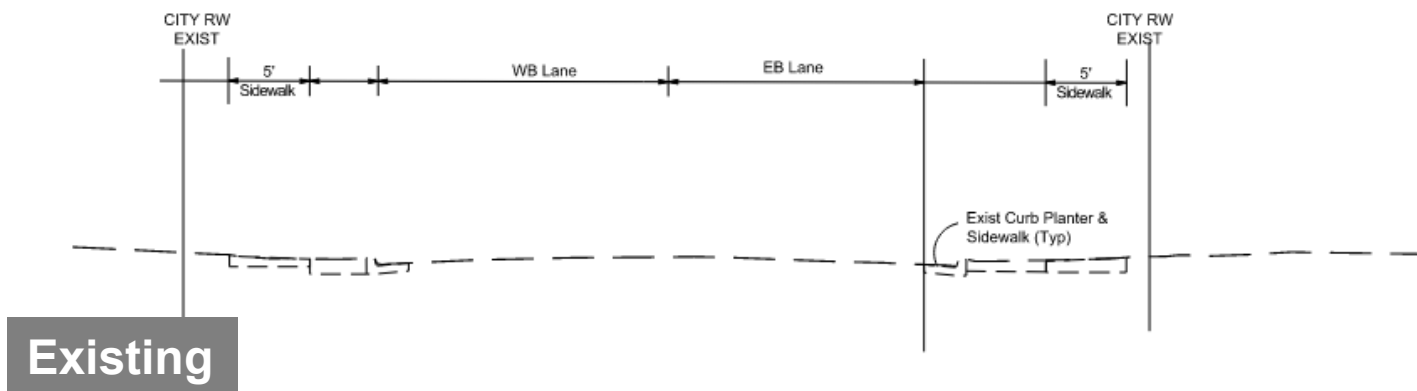


Seale Avenue: Seale Avenue Ramp

Seale Avenue Cross-Section



DRAFT



PARTIAL
UNDERPASS



Seale Avenue: Seale Ave Ramp

Aerial View



East Ramp
to/from
Tunnel

Tunnel

West Ramp
to/from
Tunnel

DRAFT

This rendering is shown for illustrative purposes only.



Seale Avenue: Seale Avenue Ramp

East Ramp on Seale Avenue



DRAFT





Seale Avenue: Seale Avenue Ramp

West Ramp at Peers Park



DRAFT



Stanford Ave

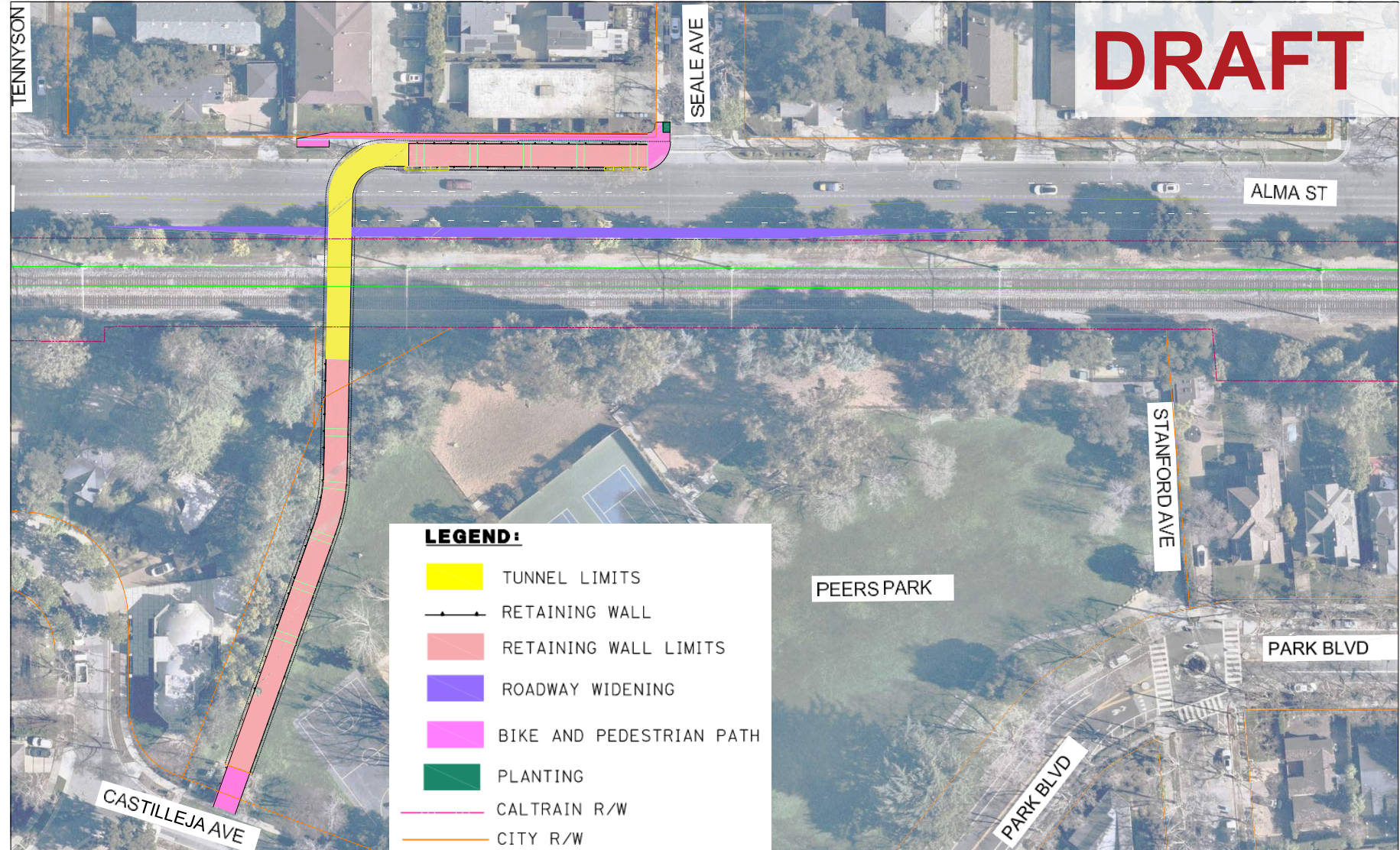
Seale Avenue: Alma Street Ramp



DRAFT

Bike/Ped Crossing

- Ramp on east side of Alma Street
- Tunnel under Alma Street and railroad tracks
- Ramp to Castilleja Avenue
- Potential partial property acquisition on both sides of Alma Street

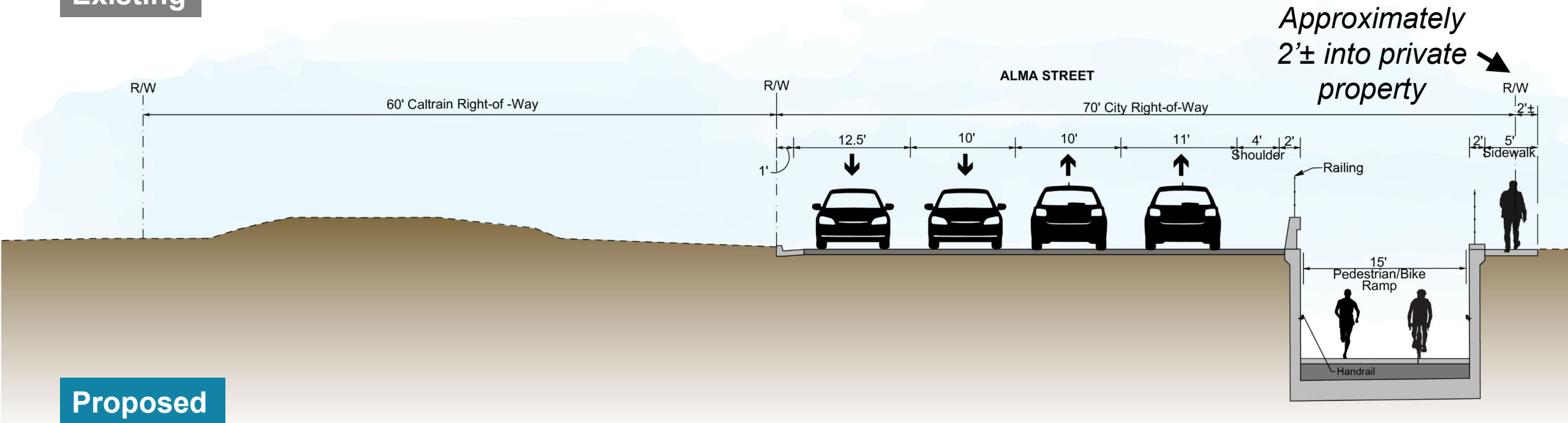
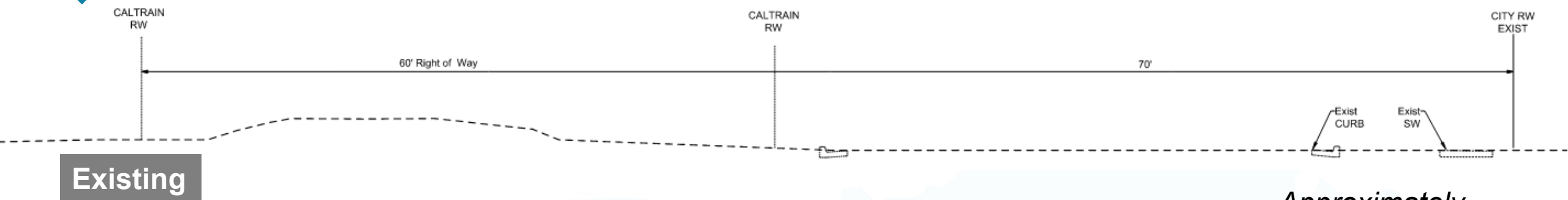


Seale Avenue: Alma Street Ramp

Alma Street Cross-Section



DRAFT



PARTIAL
UNDERPASS



Seale Avenue: Alma Street Ramp

Aerial View



Tunnel

East Ramp
to/from
Tunnel

West Ramp
to/from
Tunnel

Peers Park

Castilleja Ave.

Alma St.

Seale Ave.

DRAFT

This rendering is shown for illustrative purposes only.

PARTIAL
UNDERPASS



Seale Avenue: Alma Street Ramp

East Ramp on Alma Street, north of Seale Avenue



Alma St.

Seale Ave.

East Ramp
to/from
Tunnel

This rendering is shown for illustrative purposes only.



DRAFT

PARTIAL
UNDERPASS



Seale Avenue: Alma Street Ramp

West Ramp at Peers Park

DRAFT



West Ramp
to/from
Tunnel

Castilleja Ave.



Initial Considerations

Churchill Avenue Partial Underpass

With Landscape Strip

- Potential Parcel Acquisition
 - 16 to 18 **partial**

Without Landscape Strip

- Potential Property Acquisition at Intersection corners

Seale Avenue Bike/Ped

Seale Avenue Ramp

- Potential Parcel Acquisition
 - 14 to 16 **partial**
- Removes Seale Avenue on-street parking

Alma Street Ramp

- Potential Parcel Acquisition
 - 3 to 4 **partial**
- Peers Park entrance closer to Paly



Project Lookahead

October

Synthesize Rail
Committee and
Community Meeting
comments and input

November

11/18
Rail Committee
*Refined concept review
and recommendations to
advance to 15%*

December

12/8
City Council
*Decision to advance 1 or
2 concepts to 15% for
each crossing*



Community Input



Stations and Content

Churchill Avenue
Seale Avenue

1. Roll Plot of Each Concept
2. Crossing Trade Off Sheets
3. Station Activity and Instructions
4. Comment Form



Station Activity

Use color-coded sticky notes to identify opportunities, interests, support, and/or questions



Comment Form

Provide feedback via

- Comment form
- Website (use QR code) or link

Note: For those not able to attend the Meadow Drive and Charleston Road meeting, concepts are also are provided for review.



Additional Input Opportunities



Project Website

Materials Provided on Website:

- Refined concepts for review
- Recorded presentation
- Comment form
- ***Comment Period: October 3 – October 17***