

# ***Report of the Executive Director***

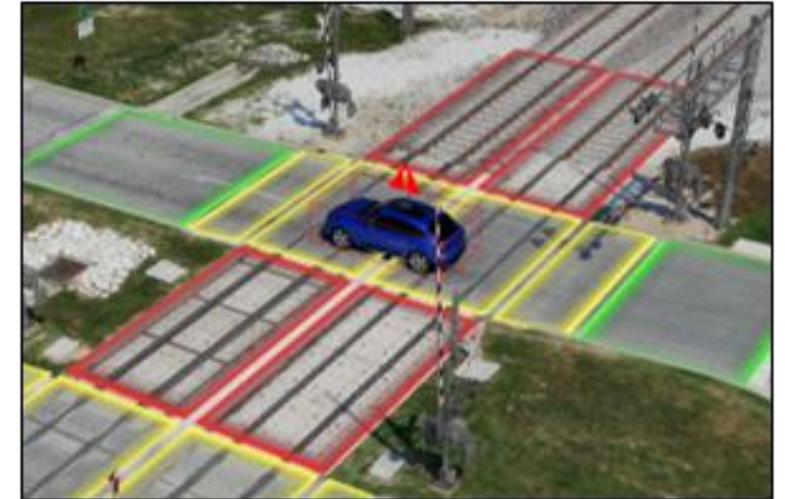
**JPB Board Meeting  
August 7, 2025**



# Safety

- Safety Installation and AI Technology

| Location (date installed)  | # vehicles on the track, per week before installation | After Installation | Notes  |
|--|---|--------------------|--|
| Broadway, Burlingame (Jan 2025)  | 3 per week average                                    | 0                  | Worked with city on adjustment signals / traffic control |
| Churchill, Palo Alto (April 2025)  | 4 observed  | 0                  | Continue signal / traffic control analysis               |
| 16th Street, San Francisco (installed July – currently in learning mode) |   |                    |  |



- Started rotating monthly internal roadshow, promoting safety culture and knowledge (CEMOF 5/28, Menlo Park 6/25, SFK 4<sup>th</sup> & King 7/30)
- APTA Rail Safety Workshop (6/28)
- APTA Commuter Rail Safety Gold Award – APTA Rail Conference (7/1)
- Full-scale emergency exercise Redwood City (8/16)

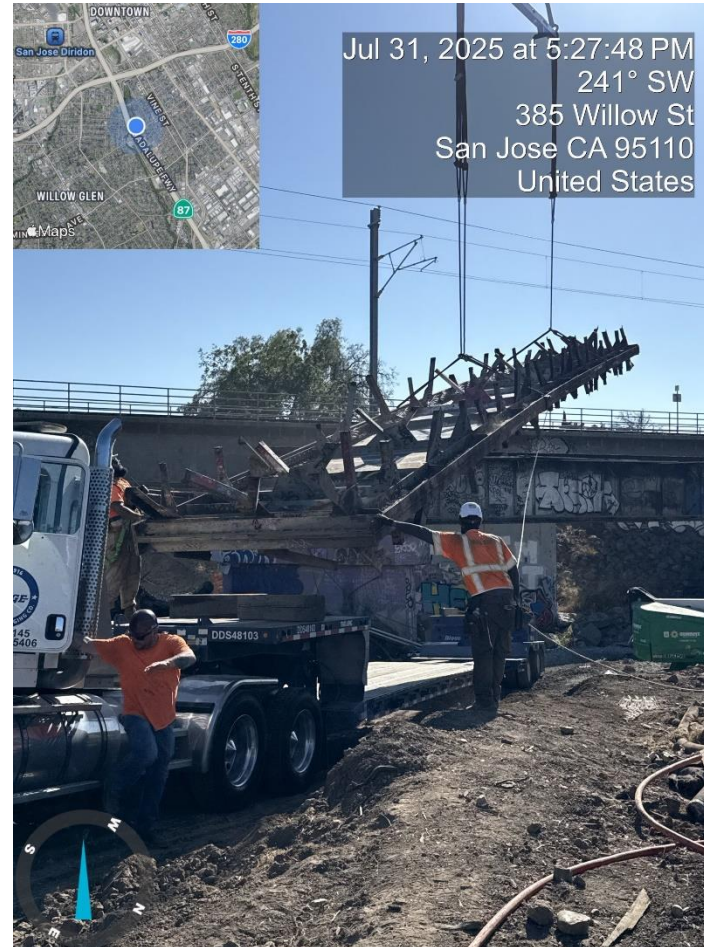
# Regional Measure Update

- 7/23 Special JPB Meeting: Approved allocation, consistent with the Bill authors' expenditure plan, approximately: \$10M SF; \$32.5M SCC, and \$32.5M SMC.
- Author's expenditure plan calls out approx. 7% for Caltrain in FY31.
- Member agencies vote on SB63



# Guadalupe River Bridge Project

- Work is in progress and continuing as planned
  - Last piece of MT1 girder was removed 7/31



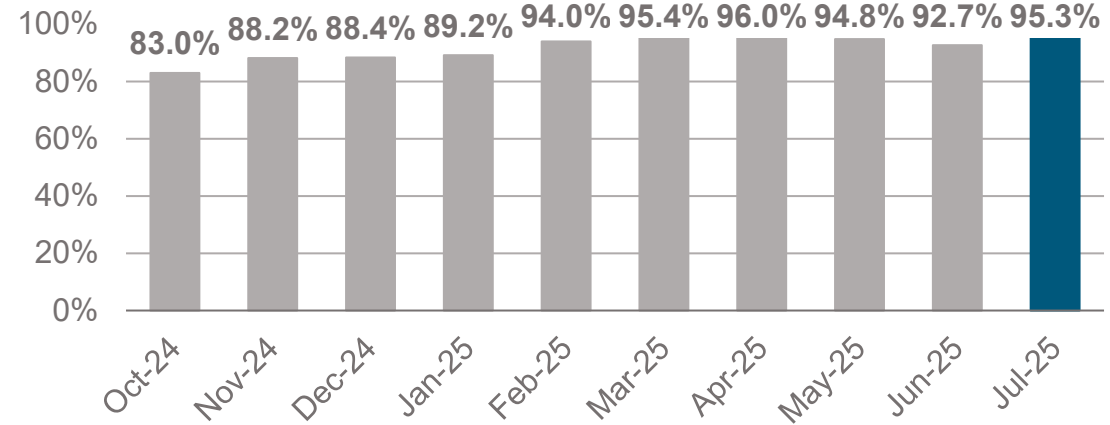
# OTP and Ridership

Achieved 95.3% On Time Performance in July (\*preliminary data as of Fri 8/1)

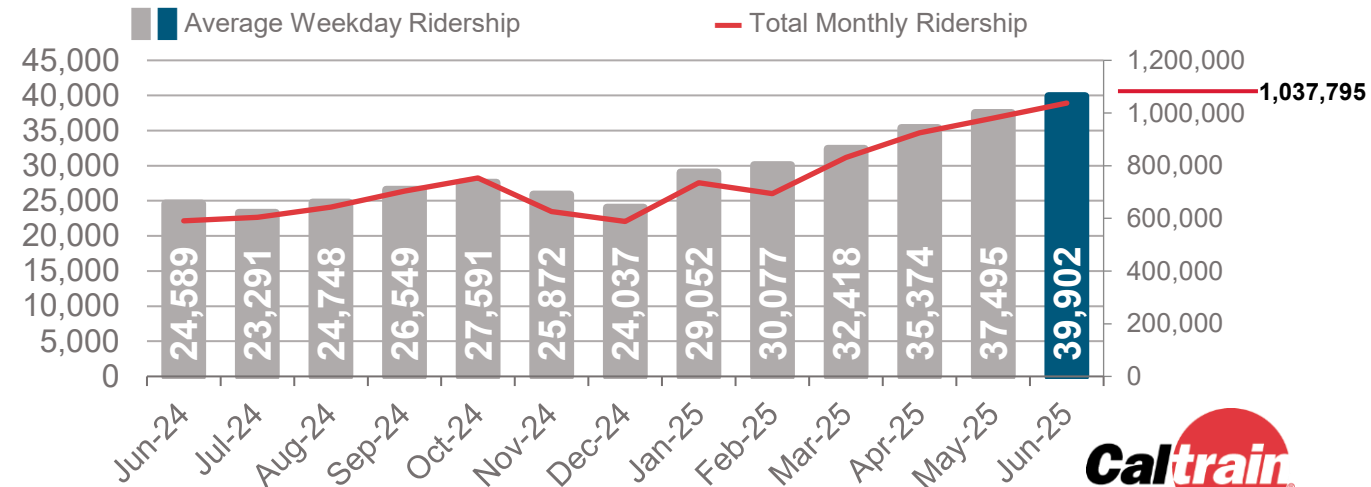
## Month of June

- 65.2% of 2019 levels (55.1% weekday, 156.2% weekend)
- Monthly +75.5% vs June 2024
- Weekday +62.1% vs June 2024
- Weekend +125.6% vs June 2024

Monthly On-Time Performance Since Electrification Launch



Ridership in the Past Year

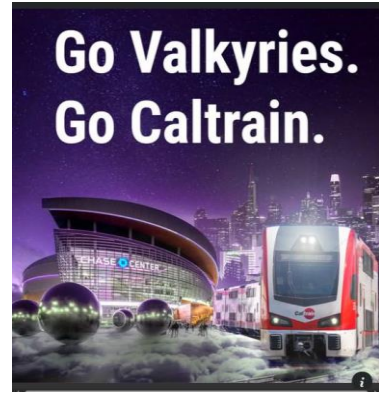


# Giants, Valkyries & Special Events

- June & July Station and Onboard Events
  - Giants – Ridership +75% vs June 2024
  - Ride of the Valkyries Fans
  - Bay FC Partnership
  - Mister Softee & Kona Ice for Passengers
  - SF Pride
  - Wu-Tang Clan Special Service
  - “Go Explore. Go Caltrain.” coasters at establishments along the corridor
- August Events
  - “Camp Caltrain” at Santa Clara Station (8/6)
  - Tai Chi – Master Amin Wu at Burlingame Station (8/13)



[Driving is For Dodgers Fans](#)



# Bay Area TRANSFER Plan & The Big Sync

- Operator-led “Bay Area TRANSFER Plan”
  - Goal: To provide a more cohesive rider experience for Bay Area transit passengers
  - Schedule changes align in January and August (“Big Sync”)
- Transfer Pilot Hubs
  - Phase 1: El Cerrito del Norte BART, San Rafael Transit Center
  - Phase 2: **Palo Alto Caltrain (Dumbarton Express)**, Daly City BART, Concord BART, Dublin/Pleasanton BART
- Detailed report due late August
- Press Conference on August 11
- Millbrae Caltrain-BART transfers 77% of 2019 levels (total ridership 65% of 2019)



FOR MORE INFORMATION

[WWW.CALTRAIN.COM](http://WWW.CALTRAIN.COM)

