

***Receive Update
Regarding Regional
Coordination
Efforts and Bay
Area TRANSFER
Plan***

**JPB TOPS Committee
July 23, 2025**



Agenda

- TRANSFER Plan Project Background
- Project Recommendations
- Implementation for August 2025
- Project Next Steps

TRANSFER Plan Project Background



The Bay Area
Transit
Reliability and
Accessibility
Network
Scheduling
Framework and
Equitable
Regional Plan

Project Background

The Bay Area TRANSFER Plan is a transit-operator led, near-term, operations-focused regional plan that aims to improve transfer timing at key regional hubs throughout the nine-county Bay Area.

Project Team

- Project Manager: Andy Metz, AC Transit
- Consultant: Jarrett Walker + Associates
- Project Working Group: Staff Representatives from 10 Bay Area Agencies, including Caltrain

TRANSFER Plan Project Background

Primary Objectives

- Continue work to advance **service change alignment** for all Bay Area transit providers
 - Aim to align schedule changes each year in January and August
 - Caltrain began aligning with regional schedule cadence in January 2025
- **Improve transfer timing** for customers within the existing transit network
 - Initial January 2025 Transfer Pilot Hubs: El Cerrito del Norte and San Rafael Transit Center
 - August 2025 Hubs: Palo Alto Caltrain, Daly City BART, Dublin/Pleasanton BART, and Concord BART
- **Highlight efforts** made by service providers to improve regional connectivity
 - “Big Sync” articles and news pieces for January 2025 Service Change
- **Develop a framework** for better schedule alignment throughout the region

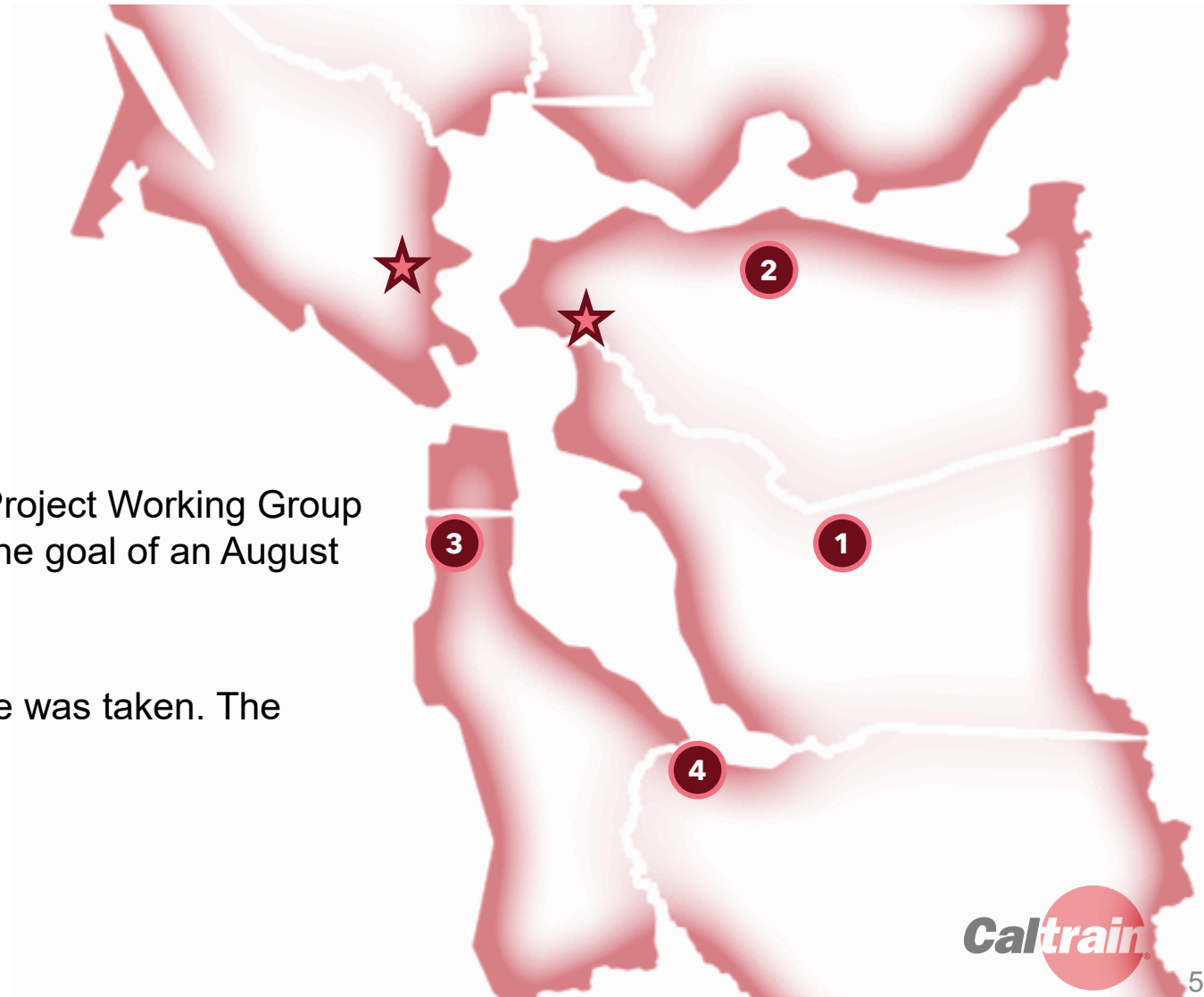
Project Recommendations



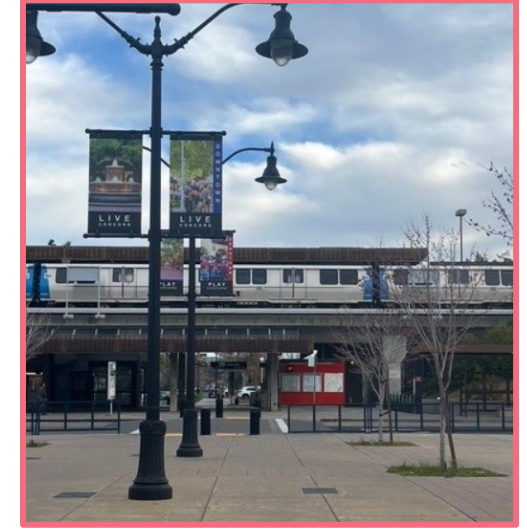
In November 2024, the operator-led TRANSFER Plan Project Working Group discussed the analysis of additional transfer hubs with the goal of an August 2025 implementation.

After the discussion was completed, an anonymous vote was taken. The results yielded a clear top four choices:

1. Dublin-Pleasanton BART
2. Concord BART
3. Daly City BART
4. Palo Alto Caltrain



Project Recommendations



December 2024

February 2025

April 2025

June 2025

August 2025

Initial Hub Research

Project Team leads an analysis of each hub to inform initial hub group meetings.

Initial Hub Group Meetings

Palo Alto – 12/18
Daly City – 12/18
Concord – 1/6
Dub./Pleas. – 1/9

Initial Route Proposals

1:1 Meetings with agency staff to develop route proposals.

Finalize Proposals with Agencies

Daly City – 4/22
Dub./Pleas. – 4/25
Concord – 4/28
Palo Alto – 4/29

Analysis + Comms.

Analyze metrics of implemented changes and develop comms. Plan.

Implement Proposals

Implementation of route proposals for the regional August 2025 Service Change.

Implementation for August 2025

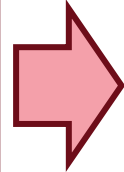
Routes Analyzed: 40

Dublin/Pleasanton BART: 11

Daly City BART: 11

Palo Alto Caltrain: 11

Concord BART: 7



Route Proposals: 26

Dublin/Pleasanton BART: 10

Daly City BART: 8

Palo Alto Caltrain: 5

Concord BART: 3



Implementations: 18*

Dublin/Pleasanton BART: 8

Daly City BART: 4

Palo Alto Caltrain: 3

Concord BART: 3

*Includes routes that have proposals that are partially implemented. The implementation status of two proposals is not yet known. The number of total route implementations could increase to as much as 20.

Implementation for August 2025



Route Schedule Changes for Upcoming Service Change for Daly City BART and Palo Alto Caltrain:

- SamTrans #110 (weekday schedule)
- SamTrans #117 (weekday schedule)
- SamTrans #121 (weekday schedule)
- SamTrans #280 (weekend schedule)
- SamTrans #281 (weekend schedule)
- SamTrans SKY (weekday schedule)
- Dumbarton Express (weekday schedule)*

*will likely go into effect in September 2025

Implementation for August 2025

Key Travel Time Improvements:

Riders from the coastside to Downtown SF will **save 17 minutes** in the AM peak and will **save 14 minutes** returning in the PM peak.

Riders from the coastside to Millbrae will **save 20 minutes** in the AM peak and will **save 14 minutes** returning in the PM peak.

Throughout the weekday, riders from the coastside to Daly City will on average **save 10 minutes** in the northbound direction and **save 3 minutes** in the southbound direction.

Weekend riders from north Menlo Park to Downtown SF will on average **save 5 minutes** in the northbound direction and will **save 16 minutes** in the southbound direction.

Weekend riders from East Palo Alto to Downtown SF will on average **save 6 minutes** on their journey to the City.

Riders from East Bay locations like Hayward will **save 6 minutes** in the PM peak on trips to Stanford University.

Midday travelers from Union City to San Mateo will **save 3 minutes** in the westbound direction and **save 19 minutes** in the eastbound direction.

DALY CITY
BART

PALO ALTO CALTRAIN

Project Next Steps

Over the next few months, the TRANSFER Plan Project Working Group will be focused on the following:

- **Finalizing Implementations**

- Involved agencies are finalizing the determination of which proposals can and cannot be implemented for the August 2025 Service Change.

- **Communication Plan**

- With the help of the Blue Ribbon Task Force Regional Marketing and Communications group, we are developing a plan to communicate transfer time improvements to the public and stakeholders.

- **TRANSFER Plan Project Framework**

- We will draft a Project Framework that incorporates key learnings and outlines how the successes from the plan can be streamlined and improved upon.

Questions?