

Climate Change Vulnerability Study

COMMUNITY LEADER MEETING
W.D. 11291

FEBRUARY 27, 2025



Agenda

Item	Duration
Introductions	5 min.
Caltrain Climate Vulnerability Study Overview	15 min.
Outreach & Engagement Roadmap	10 min.
Input on Promotional Strategies	15 min.
Wrap Up and Q&A	10 min.

Introductions

Project Team

Caltrain:

Bo Baney, Principal Sustainability Planner

Consultant Team:

Karen Barns – Project Manager, Arup

Elizabeth Owen – Engagement Lead, Arup

Violetta Muselli – Outreach Lead, Civic Edge Consulting

Community Leadership

Please introduce yourself in the chat:

- Your Name
- Organization
- Interests for this effort

Study Overview

Caltrain Sustainability

Study Motivation

Types of Extreme Weather

Impacts to Riders

Recent Examples

Study Influence

Caltrain Core Values



SAFETY



EXCELLENCE



RESILIENCE



INTEGRITY



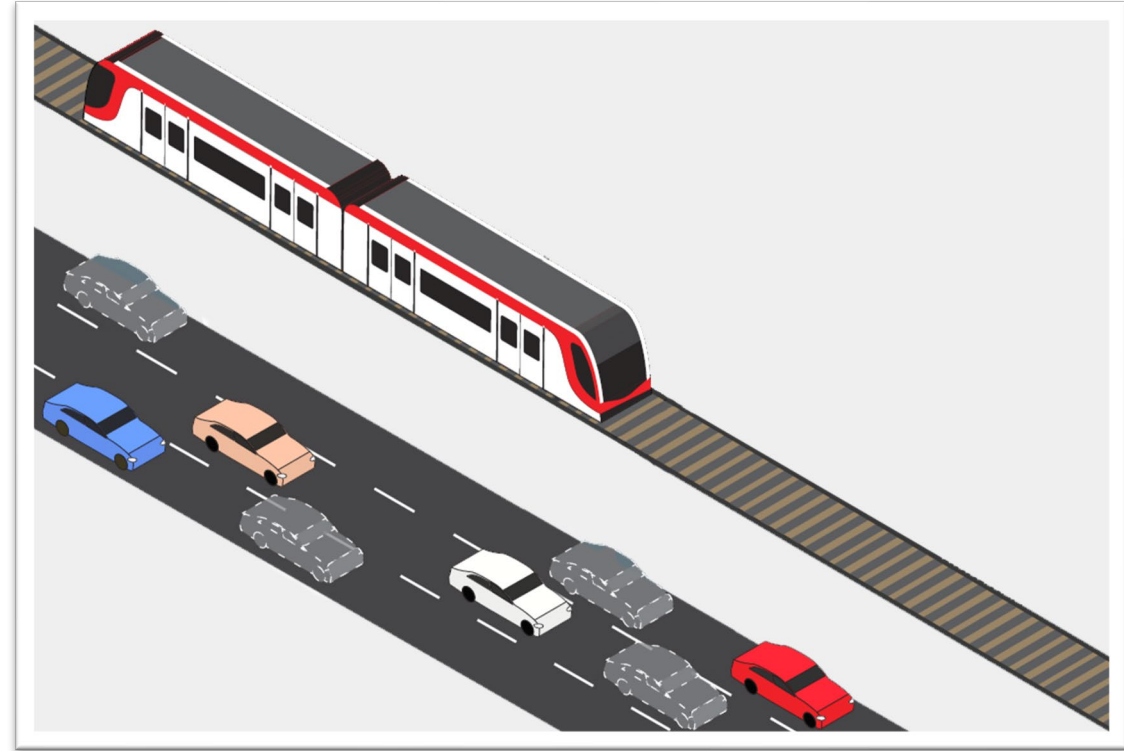
EQUITY AND INCLUSION



SUSTAINABILITY

Caltrain Sustainability

- Program focus: reducing impacts, engaging staff and community, improving efficiency
- 2024 Electrification of Corridor
 - Massive reduction in carbon emissions – equivalent of removing 55,000 cars
 - Elimination of criteria air pollutants
 - Increased, faster service
- Climate change threatens achievements and future goals



Study Objectives

Goal: Analyze the vulnerability of Caltrain service, infrastructure, right-of-way, operations, passengers, and employees to climate impacts.



Evaluate and prioritize climate risks



Provide data to plan solutions



Support the development of **physical projects and operational changes**



Incorporate diverse perspectives of passengers, community members, and others

Types of Extreme Weather Hazards



Extreme Heat

- Heat Index
- Temperature



Flooding

- Coastal
- Inland
- Sea level rise



Wildfire

- Direct impact
- Smoke



Wind

- Storms

Potential Impacts to Riders



Extreme Heat

- Delays due to speed restrictions
- Heat stress/discomfort on platforms or when traveling to and from stations



Flooding

- Delays due to flooding and/or precautionary speed restrictions
- Difficulty traveling to and from stations



Wildfire

- Delays due to power supply disruption (public safety power shutoff)
- Respiratory distress from smoke



Wind

- Delays from downed trees
- Unpleasant conditions on platforms or when traveling to and from stations

Recent Example

January 2023
Bomb Cyclones



We want to hear from you!

Have you ever experienced climate change/extreme weather impacts while getting to and from a station or riding on Caltrain?

How concerned do you feel your communities are about climate change/extreme weather impacting their transportation options?

Outreach & Engagement Roadmap

Goals for Engagement
Engagement Approach
Public Outreach Overview
Community Survey
Promotion Plan

Goals for Engagement

To understand how climate events impact Caltrain assets, operations, and passengers by:



Working with communities to develop a shared vision for addressing climate vulnerabilities.



Informing communities of climate impacts to lay the groundwork for future safety and sustainability actions.



Building ongoing relationships with communities across the Caltrain geography.



Increasing transparency of processes and climate resilience investments made by Caltrain.

Engagement Approach

Caltrain

- Internal Steering Committee (ISC)
- Executive Steering Committee (ESC)
- Committees & Joint Powers Board
- Other staff as-needed

External Advisory Committee (EAC)

- Caltrans, CA High Speed Rail
- Metropolitan Transportation Commission, Bay Conservation and Development Commission
- Valley Transportation Authority
- SF County Transportation Authority, SF Municipal Transportation Authority
- Other agencies as-needed

Public Outreach



Community Survey



Community Presentations (10)



Photo/Video Submission Tool



Public Community Meeting (1)



Community Leadership Meetings (2)



Project Summary Open House (1)

Public Outreach Overview



Community Survey

Scope: Understand how Caltrain riders have been impacted by climate change related service disruptions and their perception of how climate change affects their transportation options.

- ~4 mins to complete
- Available in English, Spanish, Chinese
- Chance to win \$100 Visa Gift Card
- Data will inform technical assessment - how passengers (and potential passengers) are most impacted
- <https://www.surveymonkey.com/r/CaltrainCCVS>

* 5. How many times have you ever experienced the following types of service disruptions during your time using Caltrain:

	Never	1-2	3-4	5-6	More than 6
Delayed or cancelled train during hot weather	<input type="radio"/>	<input type="radio"/>	<input type="radio"/>	<input type="radio"/>	<input type="radio"/>
Delayed or cancelled train during rain or windstorms	<input type="radio"/>	<input type="radio"/>	<input type="radio"/>	<input type="radio"/>	<input type="radio"/>
Wildfire smoke while traveling to or from Caltrain stations	<input type="radio"/>	<input type="radio"/>	<input type="radio"/>	<input type="radio"/>	<input type="radio"/>
Flooded roads, sidewalks, or bike paths while traveling to or from Caltrain stations	<input type="radio"/>	<input type="radio"/>	<input type="radio"/>	<input type="radio"/>	<input type="radio"/>
Uncomfortably high temperatures while waiting on Caltrain platform	<input type="radio"/>	<input type="radio"/>	<input type="radio"/>	<input type="radio"/>	<input type="radio"/>
Other type of service disruption (Please specify below)	<input type="radio"/>	<input type="radio"/>	<input type="radio"/>	<input type="radio"/>	<input type="radio"/>

Other service disruption (please specify)

Photo/Video Submission Tool

Scope: Crowdsource rider generated content that demonstrates climate change impacts.

- Opportunity for passengers to share real time updates or media from the past
- Available in English only
- Real world anecdotes aid with understanding
- bit.ly/CCVSMedia

Has Climate Change Impacted Your Caltrain Trip?

Caltrain is analyzing climate change impacts from extreme weather such as as high heat, wildfire and smoke, storm damage, and sea level rise to its riders, service, facilities, and employees. To help us understand where some of the impacts may be happening, please submit photos or videos of weather related interruptions to Caltrain service below.

Media from past years is welcome, please indicate date and time as follows:

Name

Email

Location or station where photo/video was taken

Date photo/video was taken

mm/dd/yyyy

Time when photo/video was taken

Upload your photo or video *

Upload up to 3 files. Files must be under 100 MB. Please limit videos to less than one minute.

Add Image or Video



Promotion Plan

- Caltrain Channels
 - Social media, newsletters, and emails
 - Select station screens
- Community Partner Amplification
 - Promotional Poster
 - Newsletter/Social Media Template Language
- Presentations to Community Organizations

February 2025 – May 2025

Share your input and enter for a chance to win a \$100 gift card!

Caltrain

IS CLIMATE CHANGE IMPACTING YOUR CALTRAIN RIDE?

Help Caltrain understand how extreme weather impacts your trip. Take the survey and share if you've experienced service disruptions or changed your travel plans because of climate change impacts.

SCAN CODE TO TAKE THE CALTRAIN CLIMATE CHANGE IMPACTS SURVEY:

CALTRAIN SERVICE DISRUPTIONS?

SCAN AND TAKE THE SURVEY...

ENTER TO WIN A \$100 GIFT CARD!

Have a photo of extreme weather you've experienced while riding Caltrain or on your way to and from a station? We'd love to see it! Submit your photos here bit.ly/CCVSMedia

For more information, visit caltrain.com/about-caltrain/sustainability/climate-resilience

Questions or issues? Email us at caltrainclimate@TheCivicEdge.com

surveyMonkey.com/r/CaltrainClimate

Presentations to Frontline Communities

- 15 min presentation (virtual)
 - In-person upon request
- Available in English with Spanish or Chinese interpretation
- Content:
 - Brief Study Overview
 - Collect input on experiences
 - Request to take survey



March – April 2025

We want to hear from you!

Do you have any feedback or suggestions for how to promote the survey and media submission tool?

Are you able to commit to helping us promote this to your communities?

- Ideas: Newsletters, emails, social media, messaging apps, community portals, bulletin boards, posting the poster in gathering areas, promoting at an upcoming event, other ideas?

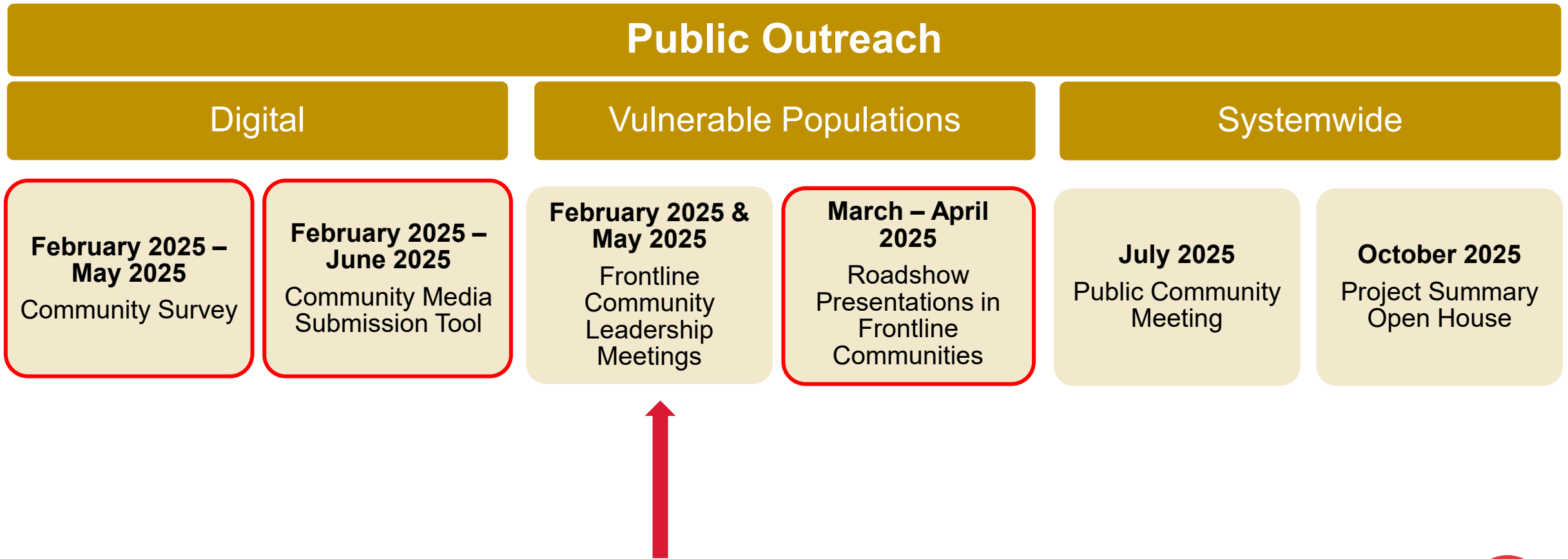
Summary of Asks

Take and promote survey: Now through May 17

Request a presentation: March and April

Attend Community Leader Meeting #2: May/June

Public Outreach Overview



Timeline



Wrap Up

Stay Informed

- Project Website:
<https://www.caltrain.com/CCVS>
- Project Team Contact Info
 - Engagement Questions
 - Sloane Sim –
caltrainclimate@TheCivicEdge.com
 - Study Specific Questions
 - Bo Baney –
sustainable@caltrain.com



Thank You!

FOR MORE INFORMATION

WWW.CALTRAIN.COM

