

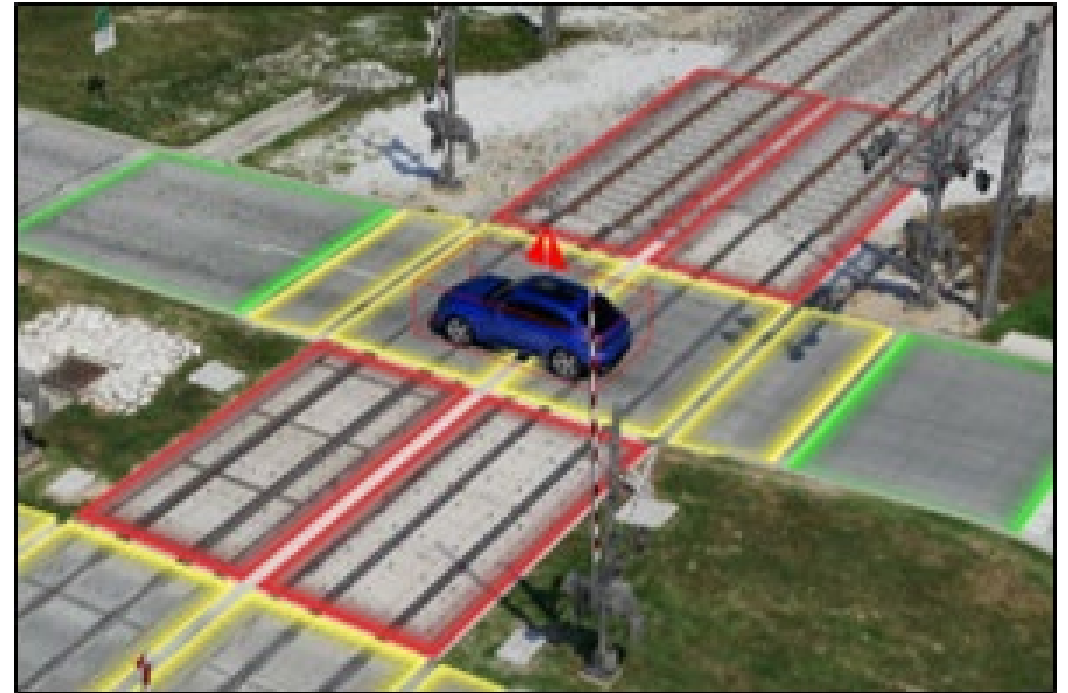
Report of the Executive Director

**JPB Board Meeting
May 1, 2025**



Safety (RailSentry Technology)

- RailSentry: AI technology
- Broadway, Burlingame (January 2025)
 - Averaged 3 vehicles on tracks per week, before safety installations
 - Since installation and RailSentry: 0
- Churchill Ave, Palo Alto (April 2025)
 - In data refinement stage
 - Will analyze and have recommendations
- 16th St, San Francisco (next, confirming date)



OTP and Ridership

Achieved 95.96% OTP in April

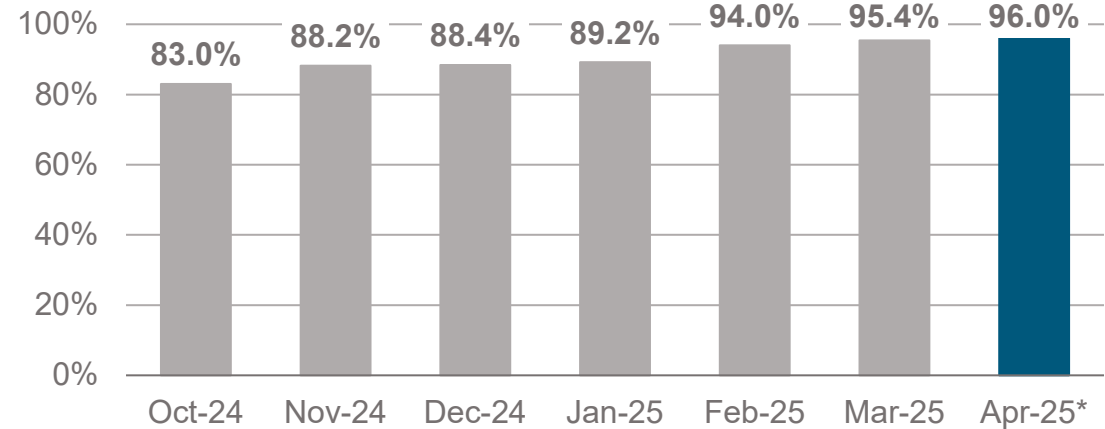
(*preliminary data as of Thu 5/1)

- March was first time hitting 95% goal since Nov 2021

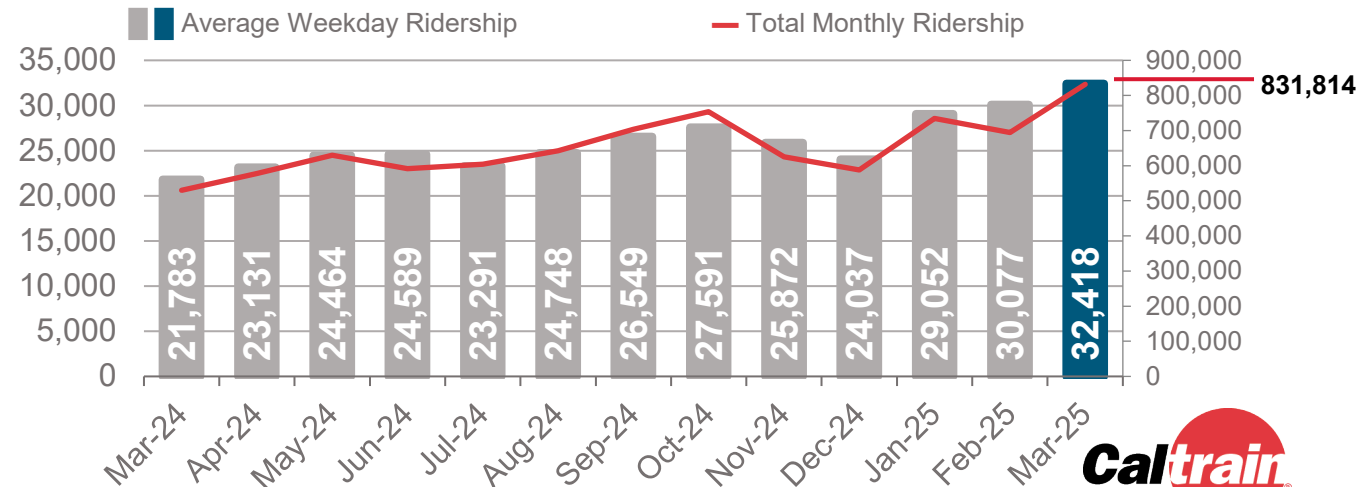
832k Passengers in March – all new highs!

- 55.9% recovery vs 2019
- Monthly +56.9% vs March 2024
- Weekday +48.8% vs March 2024
- Weekend +108.2% vs March 2024

Monthly On-Time Performance Since Electrification Launch



Ridership in the Past Year



Regional Measure (Presentation)

- Regional Measure bill is moving through Senate
 - Passed two committees
 - Gaining support
- The Caltrain counties that could opt in, SCC and SMC, are polling a variety of measure options in their counties.
- Discussions about allocation of financial responsibility for Caltrain continue among our members.

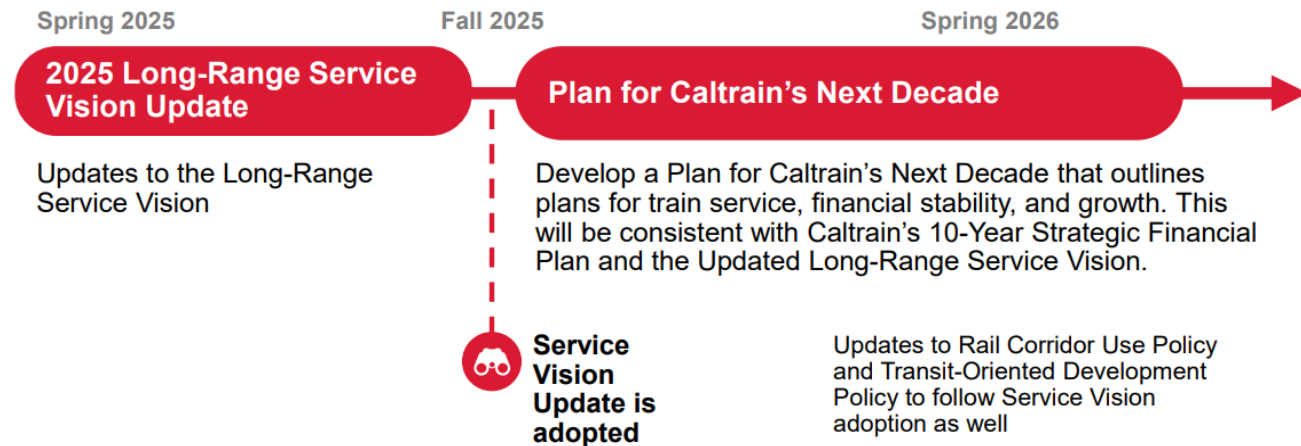


Long-Range Service Vision Update

- Adopted in 2019 as output of Caltrain Business Plan to guide long-term decision-making
- Update to policy every five years
 - Major shifts in *commute patterns* and *economic/social conditions*
 - Staff will recommend *adjusting policy direction*
- Stakeholder engagement started
- Timeline
 - AMP / Full Board Updates
 - August Adoption

Links to:

- [AMP Presentation](#)
- [Current Long Range Service Vision](#)



CTC Presentation and Tour

- Caltrain will be presenting at the California Transportation Commission (in San Francisco) and hosting an EMU tour for the commission and regional leaders May 14 and 15



Other Special Events

- All Aboard Transit Day (SF Ferry Building) Tue 5/6
- Valkyries WNBA inaugural season starts Fri 5/16 (preseason Tue 5/6)
- Public Relations Society Association Award 5/15
- Bike to Wherever Days 5/15
- Bay to Breakers Sun 5/18
- Concerts:
 - Stray Kids (Oracle Park 5/28)
 - Kendrick Lamar & SZA (Oracle Park 5/29)
 - Coldplay (Stanford Stadium 5/31 & 6/1)



Wayfinding Signage Onboard / Station

- Installing restroom location signage (upper and lower levels of the EMU)
- Installing bike decals at platforms – image from Redwood City



SF Giants Events

- 1st month Giants' season: ridership +17% vs. 2024 season (with 2 fewer games YTD)
- Standing room only on several trains
- Additional marketing and partnerships planned



FOR MORE INFORMATION

WWW.CALTRAIN.COM

