

***Receive Update on
Caltrain Strategic
Sustainability Plan &
Climate Change
Vulnerability Study***

JPB TOPS COMMITTEE
APRIL 23, 2025

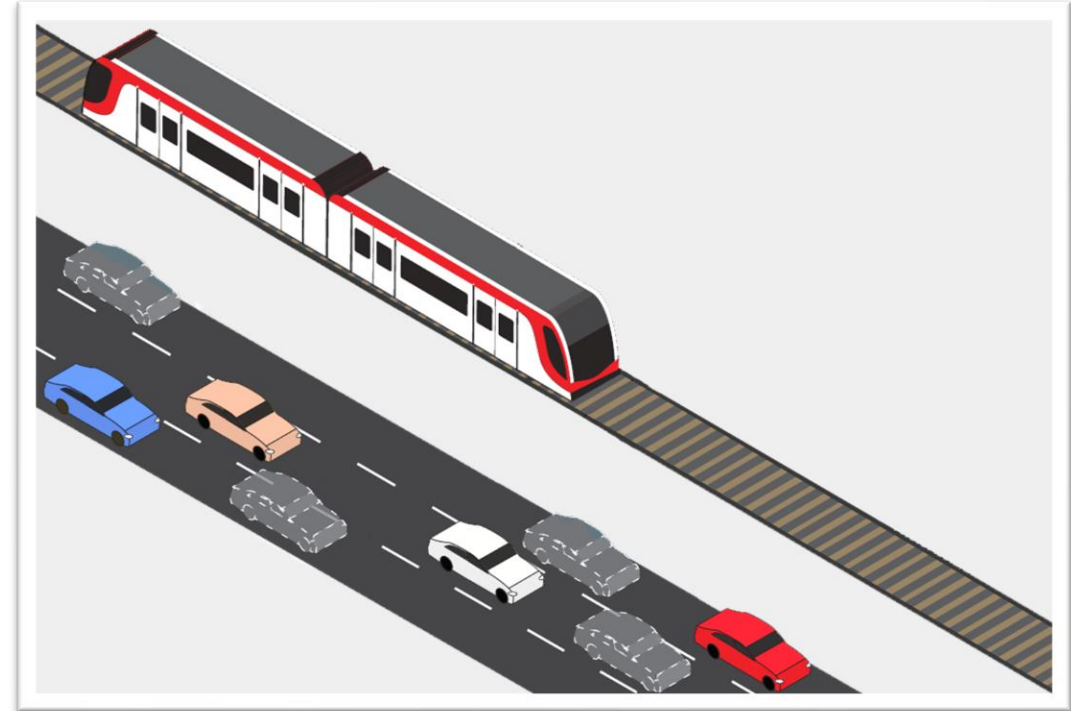


Meeting Agenda

- 1) Context: Caltrain's Sustainability Program
- 2) Strategic Sustainability Plan Overview, Scope, Committee Feedback, & Schedule
- 3) Caltrain Climate Vulnerability Study Overview, Scope, & Schedule
- 4) Next Steps

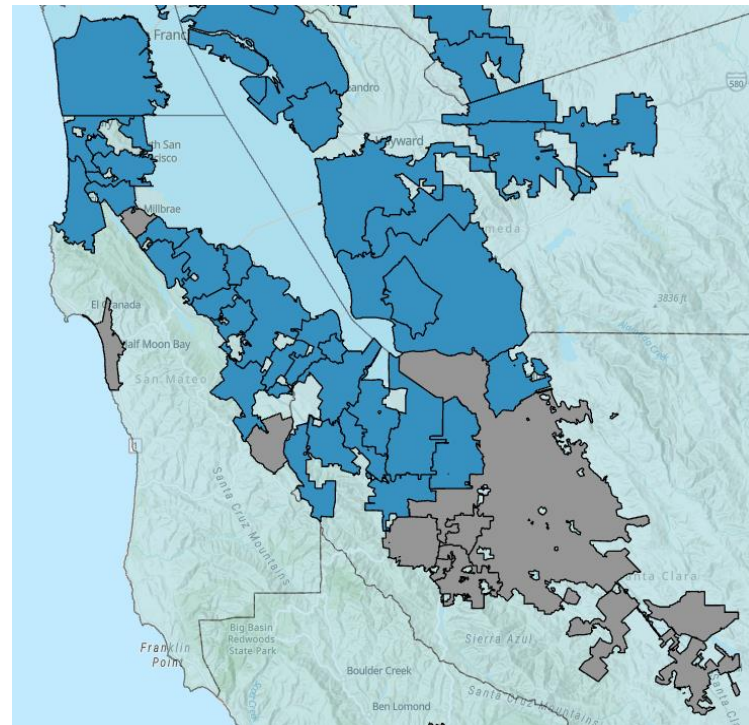
Caltrain Sustainability Program

- Program focus: reducing impacts, engaging staff and community, improving efficiency
 - American Public Transportation Association Sustainability Commitment
- 2024 Electrification of Corridor
 - Massive reduction in carbon emissions – 55,000 cars/year compared to diesel
 - Elimination of criteria air pollutants
 - Increased, faster service



Caltrain 🤝 Cities' Sustainability Goals

- **Forty percent (40%)** of Bay Area greenhouse gas emissions (GHGs) stem from transportation
- Caltrain is vital in supporting Climate Action Plans (CAPs), reducing Vehicle Miles Traveled
- Frequent, uninterrupted service supports compliance with new parking restrictions
 - Transit Oriented Development
 - Jobs closer to housing
 - Lowers barriers to mode shift adoption
- **What do we focus on next?**



Map of jurisdictions with CAPs (in blue) [Source: [CARB CAPMAP](#)]

Caltrain Core Values



SAFETY



EXCELLENCE



RESILIENCE



INTEGRITY



EQUITY AND INCLUSION



SUSTAINABILITY

Strategic Sustainability Plan

The Strategic Sustainability Plan will set the direction for our Sustainability Program for the next 10 years by:

- Defining the Program's **vision**;
- Developing the Program's overall **goals and objectives**; and
- Identifying list of priority **sustainability projects** for which staff will seek funding.

Plan will be complete by June 2025.

Work to Date

Staff Survey Feedback

- Captured staff sentiment

Internal Working Group Meetings

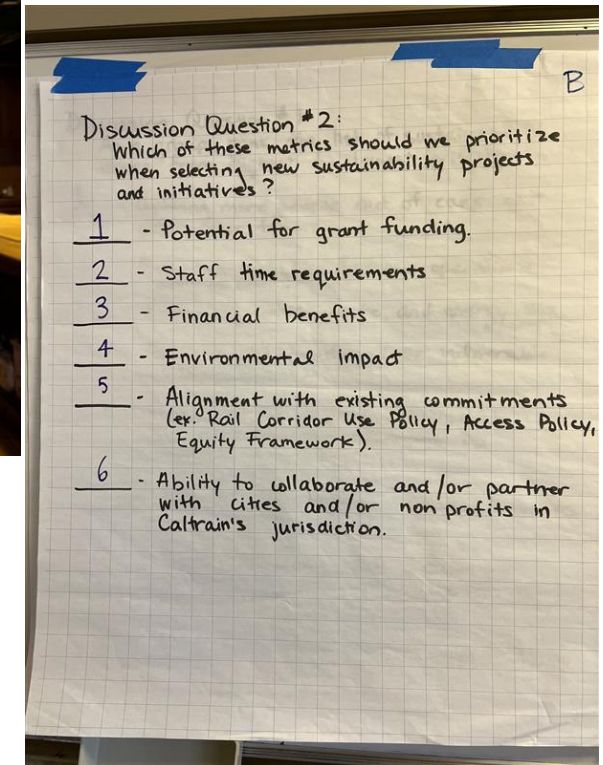
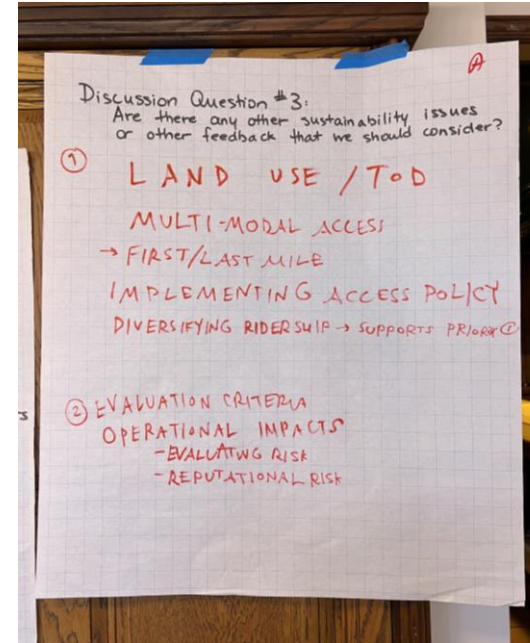
- Input on individual department's priorities
- Feedback on project elements

Executive Team

- Ranked priorities and evaluation criteria
- Ideas on integrating with existing Caltrain plans

Peer Review

- Research and analysis of nine agencies' sustainability plans



Today's Committee Discussion

Today, we will discuss and are seeking your input on the **Sustainability Priorities** and **Evaluation Criteria** for the Sustainability Plan.

- Agency staff provided feedback on both items.
- The final sustainability priorities and evaluation criteria will be used to determine which sustainability projects and initiatives Caltrain pursues* over the next 10 years.

**Dependent availability of funding*

Sustainability Priorities

Staff Recommended Top Priorities

- ✓ Getting more people out of cars and onto our trains.
- ✓ Reducing pollution from our operations.
- ✓ Serving disadvantaged or vulnerable communities.
- ✓ Reducing water, waste, and energy use from our operations.
- ✓ Reducing our climate vulnerability and increasing our resilience to extreme weather.*

**Addressed in parallel in the Climate Change Vulnerability Study*

Evaluation Criteria

Staff Recommended

- ✓ Environmental impact.
- ✓ Financial benefits.
- ✓ Staff time requirements.
- ✓ Potential for grant funding.

Strategic Sustainability Plan Next Steps



Caltrain Climate Vulnerability Study (CCVS)

Problem: Climate change threatens achievements and future goals

Goal: The CCVS will analyze the vulnerability of Caltrain service, infrastructure, right-of-way, operations, riders, and employees to climate impacts.



Evaluate and prioritize climate risks



Provide data to plan solutions



Support the development of **physical projects and operational changes**



Incorporate diverse perspectives of riders, community members, and others

Potential Impacts to Caltrain

The CCVS will help prepare Caltrain for adverse climate impacts such as:



Extreme Heat

- Delays due to speed restrictions
- Heat stress/discomfort on platforms or when traveling to and from stations



Flooding

- Delays due to flooding and/or precautionary speed restrictions
- Difficulty traveling to and from stations



Wildfire

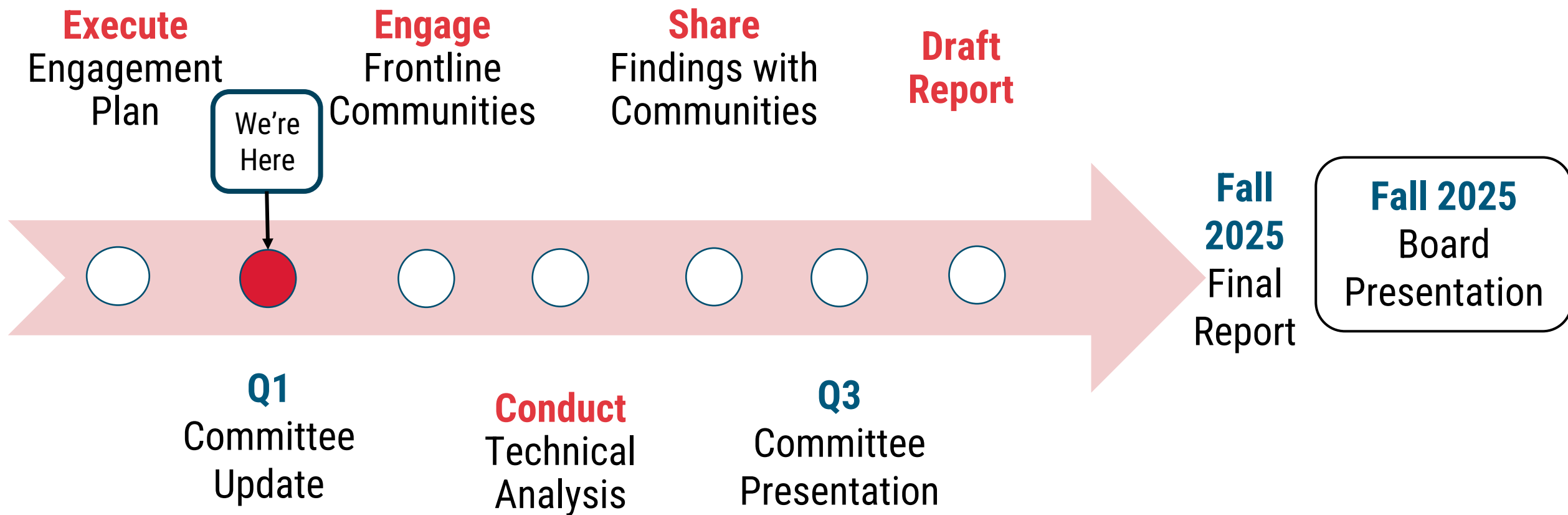
- Delays due to power supply disruption (public safety power shutoff)
- Respiratory distress from smoke



Wind

- Damage to critical infrastructure
- Delays from downed trees
- Unpleasant conditions on platforms or when traveling to and from stations

CCVS Project Schedule



CCVS Engagement Approach

Caltrain

- Internal Staff Meetings
- Citizens Advisory Committee, Bicycle and Active Transportation Advisory Committee, Local Policy Maker Committee
- Joint Powers Board

External Advisory Committee

- Caltrans, CA High Speed Rail
- Metropolitan Transportation Commission, Bay Conservation and Development Commission
- Valley Transportation Authority
- SF County Transportation Authority, SF Municipal Transportation Authority
- Other agencies as-needed

Public Outreach



Community Survey



Community Presentations (10)



Photo/Video Submission Tool



Public Community Meeting (1)



Community Leadership Meetings



Project Summary Open House (1)

We Want to Hear From You!



Share your input!

Caltrain

IS CLIMATE CHANGE IMPACTING YOUR CALTRAIN RIDE?

Help Caltrain understand how extreme weather impacts your trip. Take the survey and share if you've experienced service disruptions or changed your travel plans because of climate change impacts.

SCAN CODE TO TAKE THE CALTRAIN CLIMATE CHANGE IMPACTS SURVEY:



Questions or issues?
Email us at caltrainclimate@TheChiveEdge.com

Have a photo of extreme weather you've experienced while riding Caltrain or on your way to and from a station? We'd love to see it! Submit your photos here bit.ly/CCVSMedia

For more information, visit caltrain.com/CCVS

surveymonkey.com/r/CaltrainClimate

Have you experienced climate change/extreme weather impacts while getting to and from a station or riding on Caltrain?

How concerned are you about climate change/extreme weather impacting the needs of your constituents?

Are there any relevant studies from your respective jurisdictions that may inform our efforts?

Share your feedback and stay informed:

- Complete the [survey](#)
- Share your [photos or videos](#)

Stay Informed

Websites:

<https://www.caltrain.com/about-caltrain/sustainability>

<https://www.caltrain.com/CCVS>

Project Team:

Bo Baney, Sustainability Planner

baneyb@caltrain.com

Hannah Greenberg, Systemwide Planner

greenbergh@caltrain.com



Thank you!

Comments? Questions?



FOR MORE INFORMATION

WWW.CALTRAIN.COM

