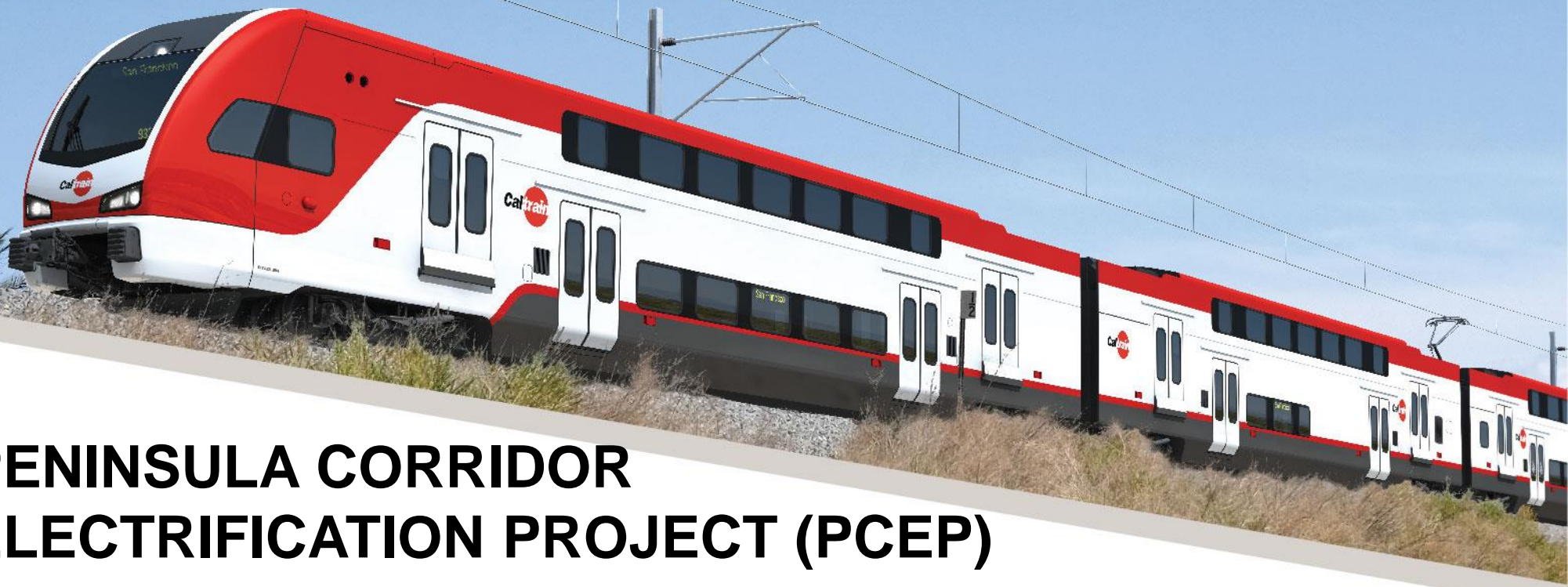


CalMod



PENINSULA CORRIDOR ELECTRIFICATION PROJECT (PCEP)

TUNNEL MODIFICATIONS PROJECT JPB CITIZENS ADVISORY COMMITTEE

**SEPTEMBER 19, 2018
AGENDA ITEM 8**



PROJECT LOCATION



PROJECT MAP



TUNNEL INFORMATION

Tunnel #1: ~1,800 Linear Feet



Tunnel #2: ~1,100 Linear Feet



Tunnel #3: ~2,360 Linear Feet



Tunnel #4: ~3,600 Linear Feet



SAN FRANCISCO TUNNEL WORK

- Work on the four San Francisco Tunnels:
 - Grouting and Notching
 - Drainage and Track Work
 - Overhead Contact System Installation
- Pre-construction: September 2018
 - Prepare Staging Areas
 - Site/Tunnel Survey
- 24 hour/day weekend work:
 - Start: Friday Night after Revenue Service
 - Finish: Monday Morning before Revenue Service

WEEKEND SAN FRANCISCO STATION CLOSURES

- Weekends - Oct 6, 2018 to Spring 2019
 - Caltrain service north of the Bayshore Station will be suspended on the weekends
 - Caltrain service south of Bayshore will remain unchanged
 - Bus service will be provided from Bayshore to 4th and King and 22nd Street stations
- Caltrain weekday service will remain unchanged
- Bus Bridge Schedule available at caltrain.com/SFWeekendClosure

SF WEEKEND CALTRAIN CLOSURE OUTREACH

- Station Signage and Announcements
- Onboard Signage and Announcements
- Station Ambassadors
 - Weekend prior to first closure and every closure weekend
- News Releases and Media Advisory
- Paid and Organic Social Media Campaigns
 - Nextdoor, Twitter, Facebook
- Paid Print and Digital Ads
- E-Newsletters
- Dedicated Webpage
 - Alert on every Caltrain page and homepage
 - Includes Transit Alternatives
- Coordination with stakeholders:
 - Cities, Counties, Chambers, Event Organizers and Community Based Organizations
- Alerts on 511.org
- Google Maps Alert
- Customer Service Number Message
- Physical Mailers to residents near tunnels

CalMod



QUESTIONS