



Sunnyvale Station Platform Modifications

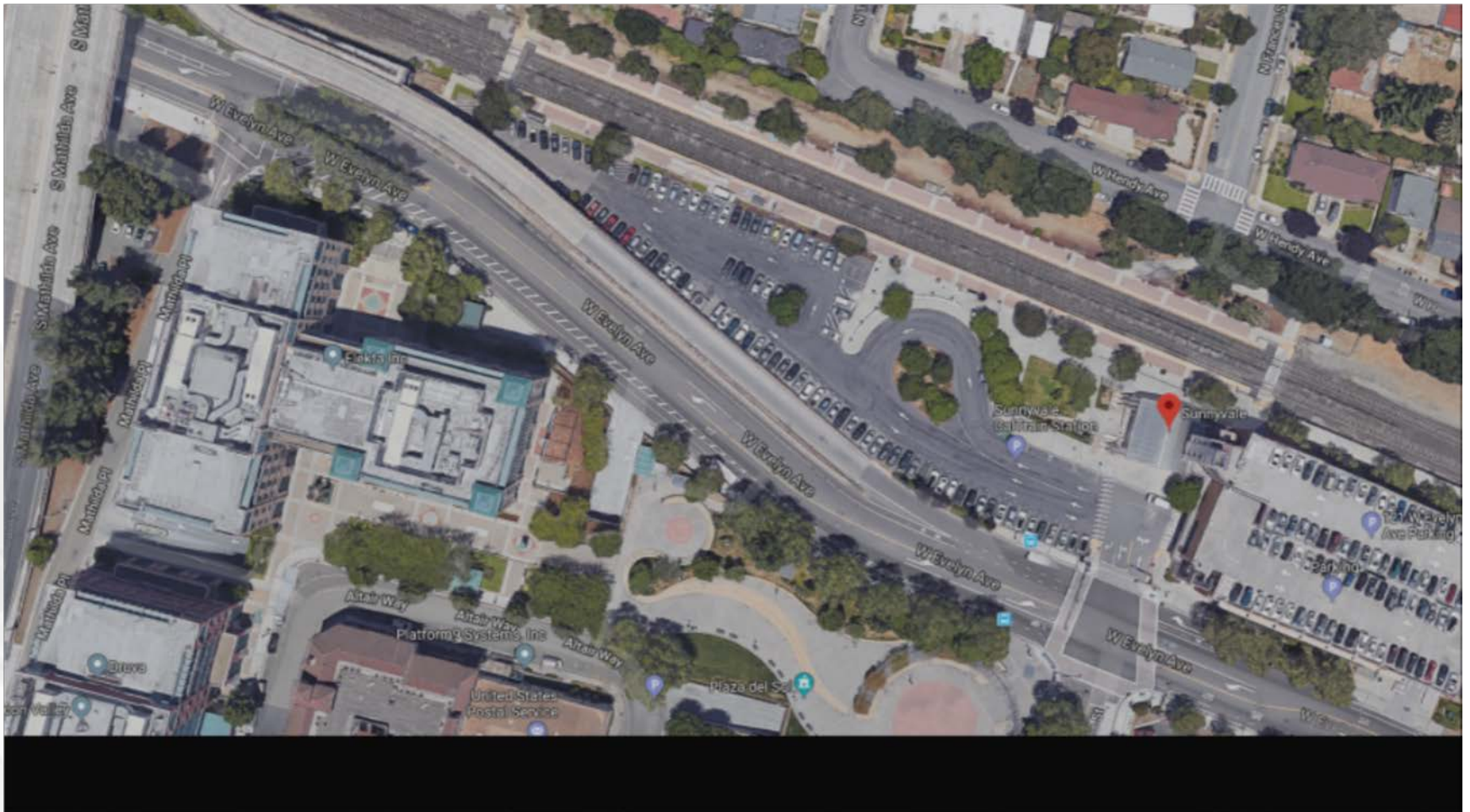
Citizen Advisory Committee

March 21, 2018

Agenda Item #9



Aerial view of the existing platform



Background Information

- Existing platform is constructed with concrete with sections of pavers mixed in between concrete bands
- The continual vibration from passing trains has caused the pavers to continually settle
- The settling of the pavers has created multiple tripping hazard along both platforms
- Periodic repairs over the last seven years has helped stabilize the problems, permanent solution required now

Scope of Work

- **Remove existing pavers between concrete footings, prepare the subgrade, install #4 rebar, back fill, finish with tan colored concrete & saw cut, stabilize all joints and epoxy grout finish**
- **Extend the platform, relocate North Pedestrian crossing 83' towards Mathilda Avenue**
- **Relocate the two existing Mini-High North Relocate Tactile Tile, PNA Shelters, ADA Squares, Wheelchair Lifts and Signage**

Tripping hazards along the platforms



Wide gaps & surface deviations



Repairs made including tree well & tree replacement



Grinding the surface irregularities



Platform modifications

- **Remove existing pavers between concrete footings, prepare the subgrade, install #4 rebar, back fill, finish with brick colored and stamped concrete**
- **Stabilize all joints and epoxy grout finish**
- **Relocate Mini-Highs, Tactile Tile, PNA Shelters, ADA Squares, Wheelchair Lifts and Signage**

Next Steps

- **Develop Plans and Specifications put out to bid, awarded bid to Sposeto (General Contractor) in 2017**
- **Notice to Proceed February 2018**
- **Construction started March 12, 2018**
- **Estimated time to complete 4 months**
- **Estimated cost \$750K**
- **Questions?**



Preview of reconstructed platform

