

Safety Highlights

The Caltrain Board voted unanimously to declare September Railroad Safety Month. Caltrain continues to focus on rail safety at grade crossings and in September launched a Public Service Announcement: “15 seconds is all it takes”. This video is available online at the following web address: http://www.caltrain.com/riderinfo/safety_security.html .

The screenshot shows the Caltrain website's "Safety & Security" page. On the left is a navigation menu with categories like Schedules, Stations, Fares, Rider Information, and About Caltrain. The "Rider Information" section is expanded, showing options like "How to Ride", "Accessibility", "Destinations", "Transit Connections", "Safety & Security", "Blog", "Newsletter & Notices", "Special Events", "Bicycles", "Parking", "Recycling", "Lost and Found", "Expressive Activity", "Title VI", "Caltrain: Major Service Issues", and "Caltrain Manners". The main content area features a "Safety & Security" header, a banner for "DISTRACTIONS ARE DEADLY!" with the slogan "STAY ALERT WHENEVER YOU ARE NEAR TRAIN TRACKS!", and a video player. The video player shows a man in a suit with the text "In California, 150 collisions every year from people stopped illegally on tracks". Below the video, there is a list of safety tips and emergency contact information. The right sidebar contains a "Subscribe" section and a "Highlights" section with links to "Weekday Timetable", "Weekend Timetable", "Special Events", and "Electrification".

15 seconds is all it takes. Wait for the gate.

All Caltrain safety is number one. Accidents on the tracks are always preventable by paying attention and observing a few rail safety tips. Pick your favorite tip and share it on social media with [#CaltrainSafe](#).

If you encounter an emergency on Caltrain or see something suspicious, call the **Transit Police at 1.877.SAF-RAIL (1.877.723.7245)**.

- A typical Caltrain train can take almost a mile to stop, even when emergency brakes are applied.
- It's never safe to stop closer than 15 feet from the rails, and a train is at least three feet wider than tracks on both sides.
- 95 percent of all rail-related deaths involve drivers trying to beat a train, or people trespassing on railroad tracks.
- 908 Pedestrians were injured or killed while walking on or near railroad tracks in 2013, up 7.7 percent from 2012.

The San Mateo County Sheriff's Transit Police participated with local law enforcement agencies along the Caltrain corridor in a new grade crossing awareness public safety program called Saturated Traffic Enforcement Program (STEP). It included police and deputies interacting directly with motorists, issuing citations and informational pamphlets at targeted grade crossings where collisions and near collisions have occurred.



Monthly Safety and Security Report September 2016

Education

Rail Safety Presentations/Activities	City	Attendees
Transit Police Enforcement and Education	Various locations	52
Sunnyvale Public Works Department	Sunnyvale	30

Enforcement

Event	SEP 2016	YTD 2016	SEP 2015	YTD 2015
Felony and Misdemeanor Arrests (all)	10	170	28	113
Parking Citations	615	2845	243	2506
Traffic Citations	22	381	50	349
All Other Infraction Citations (including trespassing)	50	681	108	680
Ejections/Contacts: Train, Station, Right of Way	21	210	64	345
Proof-of-Payment Citations	55	658	267	1306
Crisis Interventions w/ Emergency Commitments	1	25	3	28
Total Calls For Police Service	788	7394	1061	8844

Significant Events

Sept. 1 – Sept. 30: During this period the Transit Police conducted monthly High-Intensity Strategic Enforcement Program (HISEP) education and enforcement to target locations where persons may engage in unsafe behavior.

- The Transit Police responded to five reports of persons trespassing on the Caltrain right-of-way. In each instance, the individual was cited and released.
- The Transit Police cited 32 individuals for HISEP violations.

Sept. 1 – Sept. 30: During this period the Transit Police continued several enforcement measures in association with the San Francisco baseball service to ensure the safety of Caltrain passengers, crewmembers, and visitors.

- The Transit Police responded to two reports of intoxicated persons at the San Francisco 4th and King Caltrain station during these special event details. The persons were arrested and booked into county jail.

Sept. 1 – Sept. 30: The Transit Police conducted routine security checks at various Caltrain stations. As a result, two persons were arrested on outstanding misdemeanor warrants and one person was arrested on an outstanding felony warrant. In each instance, the person was booked into county jail.



Monthly Safety and Security Report September 2016

Bike Thefts:

Sept. 1 – Sept. 30: During this period the Transit Police conducted special bicycle theft details to deter bicycle thefts at various Caltrain stations. The Transit Police hopes to increase customer awareness regarding bicycle thefts and theft of personal property.

- Sept. 1 – Sept. 30: The Transit Police received nine reports of bicycle thefts from various Caltrain stations.

Sept. 1 – Sept. 30: The Transit Police received one report of vehicle burglary at the Tamien Caltrain Station in San Jose and one report of vehicle vandalism at the Millbrae Caltrain Station.

Sept. 19: The Transit Police responded to the right of way in Palo Alto regarding a report of a northbound train/ vehicle collision. The occupant of the vehicle was transported to a local hospital. The incident is under investigation by the Transit Police.

Sept. 20: The Transit Police responded to the right of way in San Jose regarding a report of an adult male trespasser who had been struck by an ACE Train. Preliminary information suggests the person may have intentionally placed himself in the path of the oncoming train. The incident is under investigation by the Transit Police.

Sept. 29: The Transit Police responded to the Redwood City Caltrain Station on a report of an adult female who was unable to care for herself. The person was located, taken into protective custody, and transported to emergency psychiatric care.

Engineering

Maintenance of Way

- The Churchill Avenue grade crossing in Palo Alto was closed over two consecutive weekends (56 hours each) for reconstruction work. Crossing safety for vehicles and pedestrians is a substantial part of the work conducted. All new materials were used, including hot-mix asphalt underlayment, ballast, concrete ties, rails and concrete panels.

Monthly Safety and Security Report September 2016



Before



Pre-existing asphalt,



rail and ties removed

Monthly Safety and Security Report September 2016



Track removal complete,



new hot mix asphalt,



ties and rail installed



The reconstructed Churchill Avenue Grade Crossing

Monthly Safety and Security Report September 2016

- The environment we work in can be very harsh at times and ever-changing. Because the right of way frequently is adjacent to well-established trees, an ongoing effort must take place to monitor falling trees and branches that can foul the railroad. The photos below show just such an occurrence in San Bruno. We have to be ready to respond to make the necessary repairs to protect the Caltrain Right of Way.



Before



After

Monthly Safety and Security Report September 2016

Communications & Signal

- Communications & Signal personnel continued their “Educational Blocks” training for Signal employees, this month focused on Standby Storage Systems, which provide backup power in the event of commercial power failures to Signal Houses. The training targeted the following:
 - Required monthly tests and documentation
 - Proper charging to prolong life of batteries



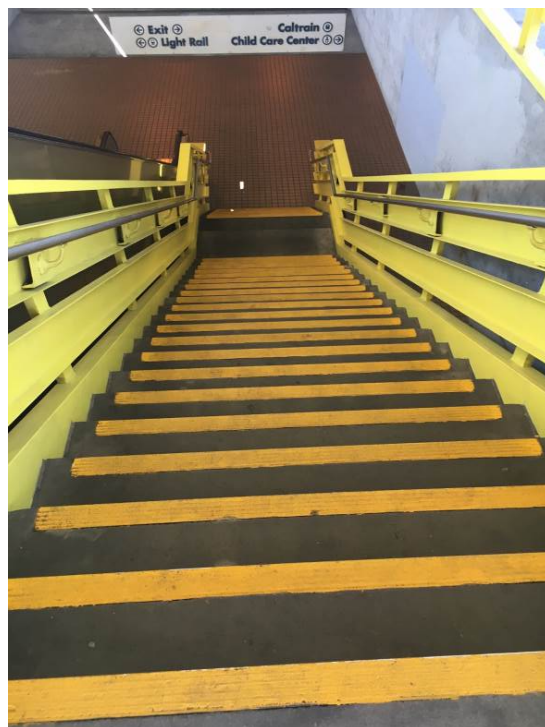
Monthly Safety and Security Report September 2016

Stations

- Continued focus on the Station of the Month – **Tamien Station**. A well maintained station acts as a deterrent against targeted vandalism and promotes a sense of safety and security.



Newly painted the main entrance to the station



General cleanup inside the station and new paint on the staircase structure