

## Safety Highlights

Caltrain provides annual special service for participants headed to Bay to Breakers in San Francisco. The service presents unique logistical and safety challenges due to the celebratory nature of the race and the early hour trains must depart to arrive at the starting time. Preparations included staffing ambassadors at key stations where we see the highest ridership demand and providing Transit Police on site to ensure an orderly, safe atmosphere at stations.



While the number of riders increased over the previous year, the advance preparations, directional signage and barriers, ambassadors and safety personnel ensured that the event went smoothly for Bay to Breakers participants.

## Education

Rail Safety Presentations/Activities	City	Attendees
Operation Lifesaver – Life Moves	Redwood City	12
Out of the Darkness	San Francisco	2000



## Monthly Safety and Security Report May 2016

### Enforcement

Event	MAY 2016	YTD 2016	MAY 2015	YTD 2015
Felony and Misdemeanor Arrests (all)	16	111	17	42
Parking Citations	127	693	470	1199
Traffic Citations	61	174	51	164
All Other Infraction Citations (including trespassing)	113	371	76	328
Ejections/Contacts: Train, Station, Right of Way	21	116	55	172
Proof-of-Payment Citations	180	331	131	616
Crisis Interventions w/ Emergency Commitments	7	18	0	16
Total Calls For Police Service	738	4073	1080	4622

### Significant Events

May 1 – May 31: Transit Police responded to seven reports of persons trespassing on the Caltrain right-of-way. In each instance, the person was cited and released.

May 1 – May 31: During this period Transit Police continued several enforcement measures in association with Caltrain's special baseball service and no arrests were made during this time.

May 1 – May 31: Transit Police responded to four reports of intoxicated individuals at various Caltrain stations. The individuals were arrested and booked into county jail.

May 1 – May 31: Transit Police conducted routine security checks at various Caltrain stations. As a result, three individuals were arrested on outstanding misdemeanor warrants and were booked into county jail.

#### Bike Thefts:

- May 1 – May 31: Transit Police received six reports of bicycle thefts from various Caltrain stations.

May 1 – May 31: Transit Police received two reports of vehicle vandalism at the Menlo Park Caltrain Station and San Jose Diridon Caltrain Station. Transit Police received one stolen vehicle report from the Belmont Caltrain Station. These cases are under investigation by Transit Police.



## **Monthly Safety and Security Report May 2016**

May 1: Transit Police responded to the San Jose Diridon Caltrain Station on a report of a juvenile male who was unable to care for himself. The individual was located, taken into protective custody, and transported to emergency psychiatric care.

May 3: Transit Police responded to the right-of-way in Sunnyvale on a report of an adult male who was struck by a southbound Caltrain while trespassing on Caltrain property. Preliminary information suggests the individual may have intentionally placed himself in the path of the oncoming train. The incident is under investigation by Transit Police.

May 4: Transit Police responded to the Redwood City Caltrain Station on a report of an adult male who was unable to care for himself. The individual was located, taken into protective custody, and transported to emergency psychiatric care.

May 5: Transit Police responded to the Palo Alto Caltrain Station on a report of an adult male who was making suicidal threats. The individual was located, taken into protective custody, and transported to emergency psychiatric care.

May 6: Transit Police responded to the South San Francisco Caltrain Station on a report of an adult female who was making suicidal threats. The individual was located, taken into protective custody, and transported to emergency psychiatric care.

May 17: Transit Police responded to the California Caltrain Station in Palo Alto on a report of a juvenile male who was having suicidal thoughts. The individual was located, taken into protective custody, and transported to emergency psychiatric care.

May 23: Transit Police responded to the right-of-way in Burlingame on a report of an adult male who was struck by a northbound Caltrain while trespassing on Caltrain property. Preliminary information suggests the individual may have intentionally placed himself in the path of the oncoming train. The incident is under investigation by Transit Police.

May 25: Transit Police responded to the San Mateo Caltrain Station on a report of an adult male who was making suicidal threats. The individual was located, taken into protective custody, and transported to emergency psychiatric care.

May 26: Transit Police responded to the San Francisco Caltrain Station on a report of an adult male who was acting erratically. After the individual was located, it was determined that he was unable to care for himself. He was taken into protective custody, and transported to emergency psychiatric care.

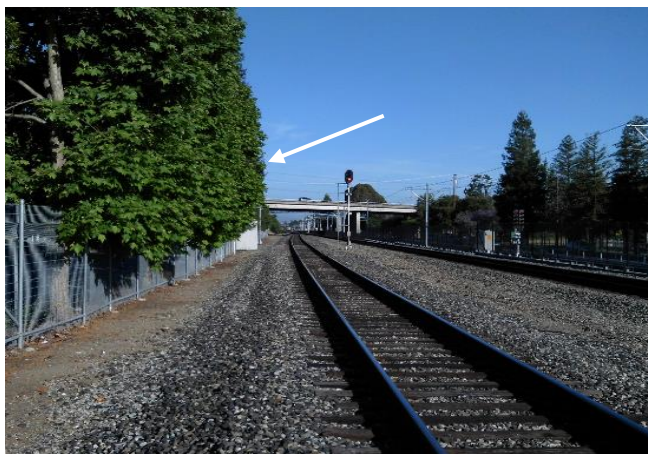
## Engineering

### Maintenance of Way

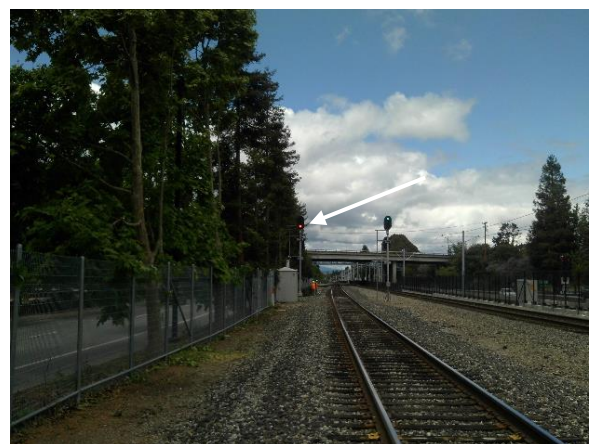
- Surfaced 11,521 lineal feet of track
- Completed 6 Thermite Welds in the track
- Repaired Fencing at 8 different locations
- Installed 61 switch ties including South San Francisco Yard Track 5 (below)



- Trimmed trees at 32 locations including Mountain View at MP 36.7 (below) where the tree was blocking the Signal



*Before*



*After*

## Monthly Safety and Security Report May 2016

- Added new Derails, devices that protect rail cars and other equipment from rolling onto the mainline tracks; placed at the ends of Setout Tracks (tracks off the mainline tracks) at Bay Meadows and Scott Boulevard.



*Bay Meadows*



*Scott Boulevard*

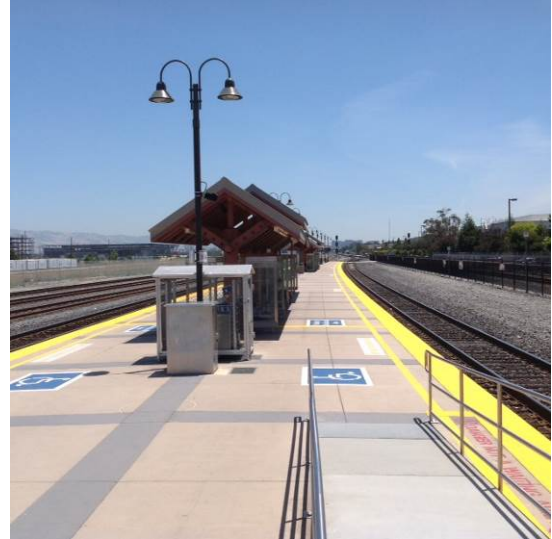
- Removed and cleaned the Wiping Bars, which distribute grease in curve track territory. These help to extend the life of the rail by reducing friction between the wheel & rail interface. Also, the grease reduces noise in the neighborhood.



## Monthly Safety and Security Report May 2016

### Stations

- Developed Mission Statement “To Provide Safe Clean & Compliant Facilities for our Customers”
- Created Procedures for all Maintenance Tasks at Stations with Sub Contractors
- Repainted yellow line & tactile tile along Main Tracks 1 & 2 at Santa Clara Station



- Painting Contractor completed painting of the east platform, including the shelters, hand rails and light poles at San Mateo Station



*Hand railing along San Mateo platform*

## Monthly Safety and Security Report May 2016



*Before & after painted pole along San Mateo platform*

### Signal & Communications

- Installed motor brush springs for the gate motors of vehicular and pedestrian crossing arms that failed to function properly.
- Updated the inspection procedure for the vehicular and pedestrian crossing arms to include detailed inspection of the motor brush springs in order to reduce vehicular and gate crossing arm failures.



*Motor Brush Springs*

## **Monthly Safety and Security Report May 2016**

- Implemented a procedure that would reduce Brass Nut Failure by limiting the torquing of brass nuts to 3.75 foot-pounds per the manufacturer's recommendations and requiring the replacement of brass nuts with inconsistent threads as shown on the right in the picture below.



*Brass Nuts*