



Monthly Safety and Security Report March 2016

Safety Highlights



Work on the 23rd Street Bridge in San Francisco is nearing completion.

This is the first bridge being replaced as part of Caltrain’s San Francisco Roadway Bridges Project, which includes improvements to the bridges over

Caltrain tracks at 22nd Street and Paul Avenue. The project will bring the bridges up to existing seismic safety standards.

At Caltrain, safety continues to be a priority in all areas. Caltrain emphasizes safe work practices throughout its projects by providing oversight and providing safety protection to workers on the right-of-way, while minimizing any disruptions to service.

Caltrain has provided safety oversight during the entire project. Safety requirements included protective barriers and Caltrain safety protection to protect the construction workers as well as Caltrain trains with minimal if any disruption to service.

Education

Rail Safety Presentations/Activities	City	Attendees
Project Safety Net	Palo Alto	30



Monthly Safety and Security Report March 2016

Enforcement

Event	MAR 2016	YTD 2016	MAR 2015	YTD 2015
Felony and Misdemeanor Arrests (all)	25	72	4	15
Parking Citations	192	370	199	462
Traffic Citations	41	72	45	72
All Other Infraction Citations (including trespassing)	77	190	64	190
Ejections/Contacts: Train, Station, Right of Way	19	58	33	85
Proof-of-Payment Citations	49	99	144	387
Crisis Interventions w/ Emergency Commitments	3	7	3	13
Total Calls For Police Service	823	2418	1052	2622

Significant Events

Mar. 1 – Mar. 31: Transit Police responded to twelve reports of persons trespassing on the Caltrain right-of-way. In each instance, the person was cited and released.

Mar. 1 – Mar. 31: Transit Police responded to three reports of intoxicated persons and one open container at various Caltrain Stations. In each instance, the person was either cited or arrested and booked into county jail.

Mar. 1 – Mar. 31: Transit Police conducted routine security checks at various Caltrain stations. As a result, seven individuals were arrested on an outstanding misdemeanor warrants and were booked into county jail.

Bike Thefts:

- Mar. 1 – Mar. 31: Transit Police received seven reports of bicycle thefts from various Caltrain stations. The largest number of thefts (three) occurred at the Palo Alto Caltrain Station.

Mar. 1 – Mar. 31: Transit Police received three reports of stolen vehicles, one report of an attempted stolen vehicle, seven reports of vehicle vandalisms at the various Caltrain Stations. These cases are under investigation by Transit Police.

Mar. 1: Transit Police responded to the Burlingame Caltrain Station where an adult male was found deceased in his parked vehicle. Preliminary information suggests the male had intentionally committed suicide. The incident is under investigation by Transit Police.

Monthly Safety and Security Report March 2016

Mar. 6: Transit Police responded to the right-of-way in Santa Clara on a report of an adult male trespasser who had been struck by a southbound Caltrain. Preliminary information suggests the male may have intentionally placed himself in the path of the oncoming train. The incident is under investigation by Transit Police.

Mar. 13: Transit Police responded to the Redwood City Caltrain Station on a report of an adult male who was trespassing on the right-of-way. Upon arrival, it was determined that the subject was having suicidal thoughts. The subject was located, taken into protective custody, and transported to emergency psychiatric care.

Mar. 17: Transit Police responded to the Millbrae Caltrain Station on a report of an adult female who was behaving erratically. Upon arrival, it was determined the subject was unable to care for herself. The subject was located, taken into protective custody, and transported to emergency psychiatric care.

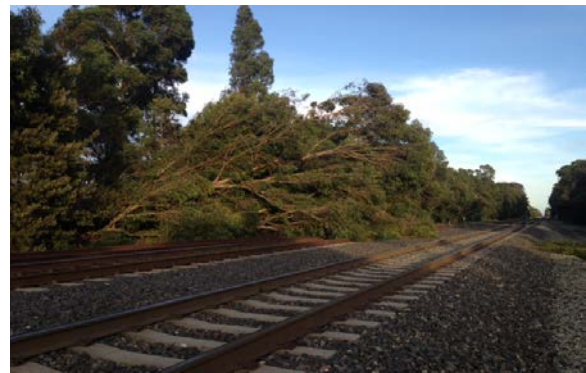
Mar. 21: Transit Police responded to the Palo Alto Caltrain Station on a report of an adult male who was behaving erratically. Upon arrival, it was determined that the subject was having suicidal thoughts. The subject was located, taken into protective custody, and transported to emergency psychiatric care.

Engineering

Maintenance of Way

TASI MOW has completed over 590 days of injury free work!

March 11, 2016 – Removed a 60-foot Eucalyptus Tree that fell onto adjacent property in San Jose



March 26, 2016 - Due to high winds on the Right-of-Way, a 90-foot Eucalyptus Tree fell across the tracks just south of the Millbrae Station. A MOW employee notified dispatch, and all trains in the area were held. Trains used single-track around the tree until removed.

Monthly Safety and Security Report March 2016

- Installed 29 new switch ties and 16 9-foot wooden ties in South San Francisco Yard (SSFY)



Torch cutting frozen bolts in SSF Yard



Replaced torch cut bolts with new bolts, washers & nuts

- Surfaced 17,764 lineal feet of track
- Replaced switch components at CP Tunnel near Bayshore Station



Unloaded new switchpoint before installation at CP Tunnel



Replaced stock rails at CP Tunnel Stations

Monthly Safety and Security Report March 2016



Repaired lights north of Hayward Park station along pathway on the west side



Replaced 17 existing ballast and lights with Light Emitting Diode (LED) lights along the platform at Sunnyvale station; LED lights are now furnished with ballast and this will simplify future replacements.



Removed a tree that fell on the Crew Facility at 5th Street & Townsend in San Francisco.

Monthly Safety and Security Report March 2016

Signal

- Continued hands-on training on the use of special tools for signal maintainers at Menlo Park Lab.

The tool shown to the right allows the Signal Maintainer to properly bend the soft copper finger contact to achieve the desired tension on signal mechanisms found at grade crossing.



The tool shown below allows the Signal Maintainer to properly adjust the cam controller found on the pedestrian gate to the correct angle

