



## Monthly Safety and Security Report February 2016

### Safety Highlights



The Santa Inez Avenue Bridge was replaced during the last weekend in February. The replacement is part of the San Mateo bridges project, which will upgrade four rail bridges to improve operational safety.

Multiple Caltrain Safety Officers monitored the removal and installation process, during much of which a bus bridge replaced rail service between the Hayward Park and Burlingame stations. All workers were provided Job Safety Briefings as a reminder of the safety measures in place.

Planning, coordination, and monitoring were key factors to get the bridge replaced safely for train service Monday morning and without any injuries to the workers.

### Education

Rail Safety Presentations/Activities	City	Attendees
New SamTrans Customer Service Representatives	San Carlos	3
St. Paul's Child Development Center	Mountain View	25
Project Safety Net	Palo Alto	30



## Monthly Safety and Security Report February 2016

### Enforcement

Event	FEB 2016	YTD 2016	FEB 2015	YTD 2015
Felony and Misdemeanor Arrests (all)	31	47	5	11
Parking Citations	7	178	122	263
Traffic Citations	16	31	22	27
All Other Infraction Citations (including trespassing)	74	113	62	126
Ejections/Contacts: Train, Station, Right of Way	20	39	20	52
Proof-of-Payment Citations	1	50	105	243
Crisis Interventions w/ Emergency Commitments	1	4	8	10
Total Calls For Police Service	793	1595	783	1570

### **Significant Events**

Feb. 1 – Feb. 29: Transit Police responded to twenty-two reports of persons trespassing on the Caltrain right-of-way. In each instance, the person was cited and released.

Feb. 1 – Feb. 29: Transit Police responded to two reports of intoxicated persons at various Caltrain Stations. In each instance, the person was either cited or arrested and booked into county jail.

Feb. 1 – Feb. 29: Transit Police conducted routine security checks at various Caltrain stations. As a result, six individuals were arrested on an outstanding misdemeanor warrants and were booked into county jail.

#### **Bike Thefts:**

- Feb. 1 – Feb. 29: Transit Police received three reports of bicycle thefts from various Caltrain stations.

Feb. 1 – Feb. 29: Transit Police received six reports of vandalisms at the various Caltrain Stations. These cases are under investigation by Transit Police.

Feb. 1: Transit Police responded to the right-of-way in San Mateo on a report of an adult male trespasser who had been struck by a southbound Caltrain. Preliminary information suggests the male may have intentionally placed himself in the path of the oncoming train. The incident is under investigation by Transit Police.

Feb. 20: Transit Police responded to the Palo Alto Caltrain Station on a report of a suicidal adult female who was hearing voices and wanted to harm herself. The subject was located, taken into protective custody, and transported to emergency psychiatric care.

## Engineering

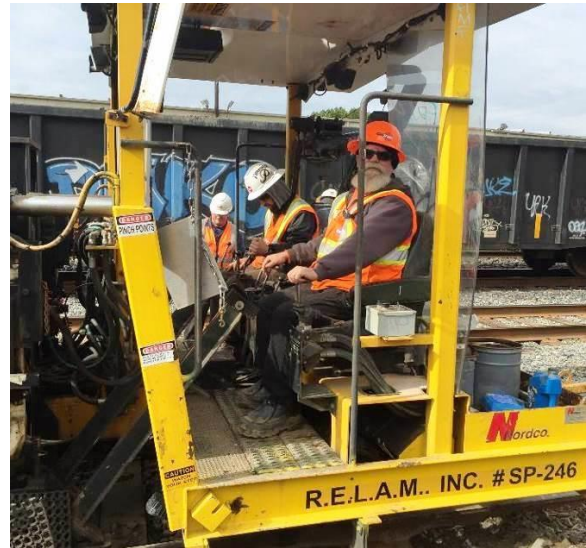
### Maintenance of Way

#### TASI MOW crews have completed over 560 days of injury free work.

- Installed 28 new switch ties and 44 – 9 foot wooden ties in South San Francisco Yard (SSFY)

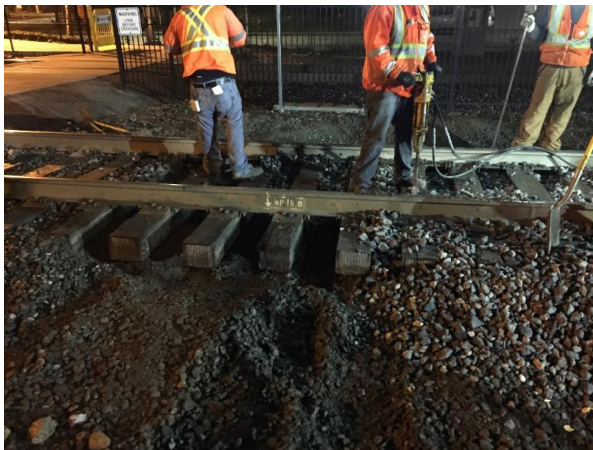


*Replacing rotted ties no longer properly supporting the rail in SSFY*

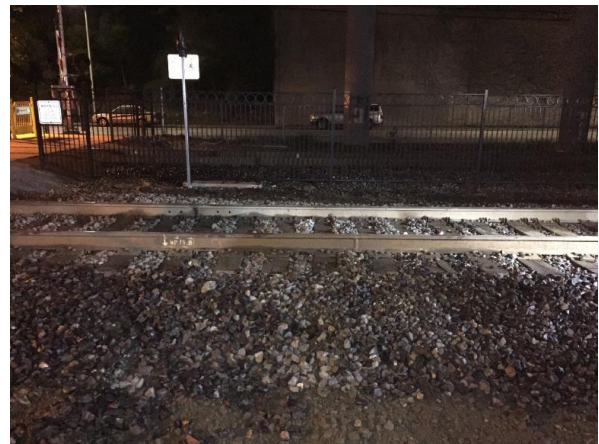


*Personnel & equipment used in the tie replacement work in SSFY*

- Surfaced 29,940 lineal feet of track
- Removed a surface “Soft Spot” South of Hayward Park Station



*Dug out cribs between ties & removed fouled ballast*



*Installed new ballast, tamped ties, restored track surface*



## Monthly Safety and Security Report February 2016

- Repaired fences that have been cut by vandals at Curtner Avenue in San Jose. Expanded metal fence will be installed at this location to prevent vandalism.



Before



After

### Stations

- Restored Boarding Assistance Areas markings at Blossom Hill, Capitol & Hillsdale Stations platforms



# Monthly Safety and Security Report February 2016

- Removed graffiti at South San Francisco Station area.



Before



After