

**CALTRAIN MODERNIZATION PROGRAM**  
Switching Station Construction Notice

**CALTRAIN ELECTRIFICATION PROJECT**

The Redwood City Switching Station (SWS) is one of 10 traction power facilities which will provide power to Caltrain's newly electrified system. The Switching Station is an unmanned facility that will maintain and regulate electrical power to the electric trains through the Overhead Contact System. Beginning in late 2018 crews will prepare a staging area at the existing Caltrain track materials yard south of Woodside Road. The Switching Station will be installed in early 2019 and will have a footprint of 120 'x 40'. The footprint will contain two transformers, a control house, and access area. Installation of the Switching Station will also include installation of two gantry structures up to 50 feet. Gantries are H-frame steel structures that support overhead wires parallel to the tracks. These wires connect to the overhead contact system and provide power to the trains.

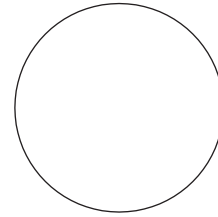
A map of the project area is available on the opposite side of this notice.

Construction activities will take place primarily during the day, with the possibility of limited night work. Construction of the Switching Station will last 9-12 months.

For more information, please contact **650.399.9659** or toll free at **800.660.4287**. The project email is [calmod@caltrain.com](mailto:calmod@caltrain.com)

You may also view more information about the switching station by viewing the materials available on our website at:

<https://calmod.org/resources/#redwoodcity>



**CALTRAIN MODERNIZATION PROGRAM**  
Switching Station Construction Notice

**CALTRAIN ELECTRIFICATION PROJECT**

The Redwood City Switching Station (SWS) is one of 10 traction power facilities which will provide power to Caltrain's newly electrified system. The Switching Station is an unmanned facility that will maintain and regulate electrical power to the electric trains through the Overhead Contact System. Beginning in late 2018 crews will prepare a staging area at the existing Caltrain track materials yard south of Woodside Road. The Switching Station will be installed in early 2019 and will have a footprint of 120 'x 40'. The footprint will contain two transformers, a control house, and access area. Installation of the Switching Station will also include installation of two gantry structures up to 50 feet. Gantries are H-frame steel structures that support overhead wires parallel to the tracks. These wires connect to the overhead contact system and provide power to the trains.

A map of the project area is available on the opposite side of this notice.

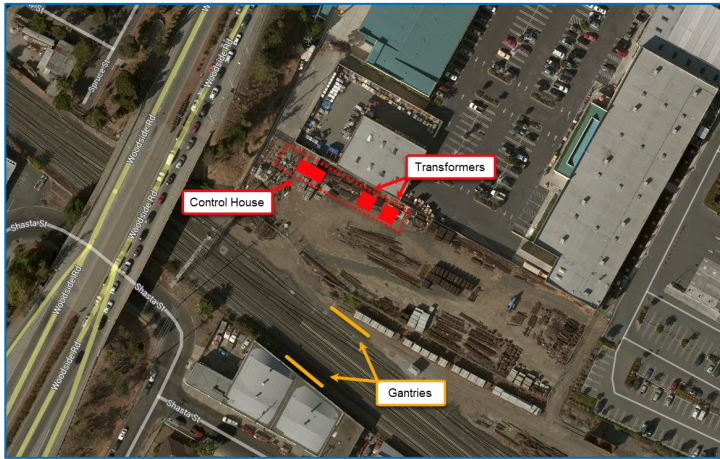
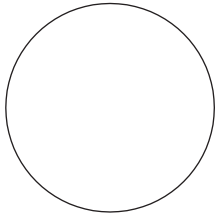
Construction activities will take place primarily during the day, with the possibility of limited night work. Construction of the Switching Station will last 9-12 months.

For more information, please contact **650.399.9659** or toll free at **800.660.4287**. The project email is [calmod@caltrain.com](mailto:calmod@caltrain.com)

You may also view more information about the switching station by viewing the materials available on our website at:

<https://calmod.org/resources/#redwoodcity>





Switching Station Layout

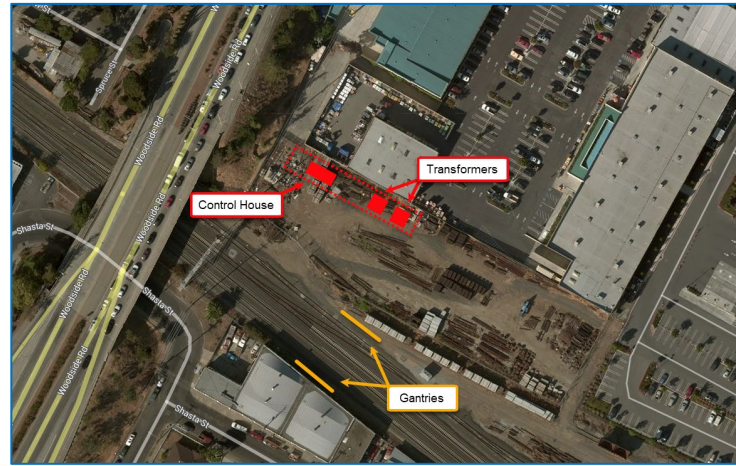
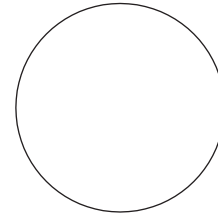
ABOUT THE PROJECT

Caltrain Electrification is a key component of the Caltrain Modernization Program that will electrify the Caltrain Corridor from San Francisco's 4th and King Station to approximately the Tamien Station in San Jose and convert diesel-hauled to Electric Multiple Unit (EMU) trains. Caltrain Electrification will improve Caltrain system performance, enable more frequent and/or faster train service, and reduce long-term environmental impact by reducing noise, improving regional air quality and reducing greenhouse gas emissions. Caltrain Electrification is scheduled to be operational by 2022.

FOR MORE INFORMATION

- CalMod.org #Caltrain #CalModTrains
calmod@caltrain.com www.facebook.com/caltrain
650.399.9659 Para traducción llama al 1.800.660.4287

We appreciate your patience during construction.



Switching Station Layout

ABOUT THE PROJECT

Caltrain Electrification is a key component of the Caltrain Modernization Program that will electrify the Caltrain Corridor from San Francisco's 4th and King Station to approximately the Tamien Station in San Jose and convert diesel-hauled to Electric Multiple Unit (EMU) trains. Caltrain Electrification will improve Caltrain system performance, enable more frequent and/or faster train service, and reduce long-term environmental impact by reducing noise, improving regional air quality and reducing greenhouse gas emissions. Caltrain Electrification is scheduled to be operational by 2022.

FOR MORE INFORMATION

- CalMod.org #Caltrain #CalModTrains
calmod@caltrain.com www.facebook.com/caltrain
650.399.9659 Para traducción llama al 1.800.660.4287

We appreciate your patience during construction.

