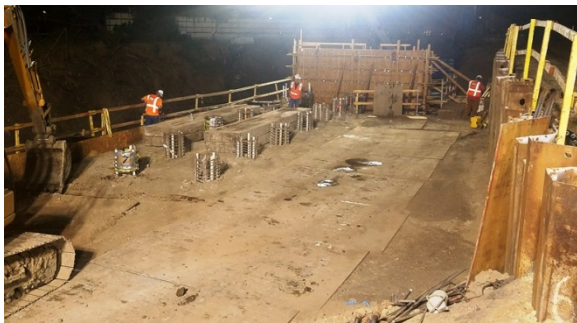


### Safety Highlights

Caltrain continued work at the Los Gatos Creek Bridge Replacement project. Caltrain Safety monitored construction work night and day as needed. Building a new tail track is a major milestone prior to demolition of the existing bridge with two tracks.



*Construction work at night building tail track*

Designated work was scheduled for nights to avoid stopping construction equipment when trains needed to pass through the work zone located just south of the San Jose Diridon station.

During the day, work is stopped to protect the workers and the passengers in the passing trains.

After the tail track is built, testing will be conducted to ensure safe operation of the new signals and communications equipment to include grade crossing safety devices are functioning properly.



*Work stopped during the day as trains passed*

Once the tail track is determined to operate safely, the bridge with the two current tracks will be demolished and two bridges will be built with one track on each bridge.

At Caltrain, safety, and security are always priority in maintaining reliable and dependable service.

### Education

Rail Safety Presentations/Activities	City	Attendees
PCEP Fire Life Safety Committee	San Mateo	12
NorCal Rail Safety Team Meeting	Oakland	20
San Mateo County Suicide Prevention Committee	San Mateo	20
Project Safety Net	Palo Alto	30



## Monthly Safety and Security Report June 2017

### Enforcement

Event	JUNE 2017	YTD 2017
Felony and Misdemeanor Arrests (all)	13	87
Parking Citations	485	1932
Traffic Citations	20	315
All Other Infraction Citations (including trespassing)	54	515
Ejections/Contacts: Train, Station, Right of Way	28	167
Proof-of-Payment Citations	0	73
Crisis Interventions w/ Emergency Commitments	2	19
Total Calls For Police Service	795	5007

### **Significant Events**

June 1 – June 30: During this period, the Transit Police conducted monthly High-Intensity Strategic Enforcement Program (HISEP) initiatives targeting education and enforcement in locations where persons may engage in unsafe behavior.

- The Transit Police responded to one report of a person trespassing on the Caltrain right of way. The person was cited and released.
- The Transit Police cited 53 persons for safety violations as part of the HISEP effort.

June 1 - June 30: The Transit Police conducted several enforcement measures in association with Caltrain’s special baseball service:

- Extra security details were assigned to the 4th and King Station in San Francisco.
- Two persons were cited for ‘minor in possession of alcohol’ and released.
- One person was arrested for “public intoxication of alcohol” and was booked into county jail.

***Transit Police would like to remind Caltrain patrons to drink responsibly. Please remember that drinking alcoholic beverages is prohibited after 9:00 PM on all southbound trains leaving the San Francisco Caltrain Station after special events.***

June 1 - June 30: The Transit Police conducted routine security checks at various Caltrain stations. As a result, two persons were arrested on outstanding misdemeanor and felony warrants. In each instance, the person was booked into county jail.



## Monthly Safety and Security Report June 2017

June 1 – June 30: The Transit Police responded to two reports of intoxicated persons at the Redwood City Caltrain Station. In each instance, the person was booked into county jail.

June 1 – June 30: Transit Police received -

- five reports of vehicle burglaries at various Caltrain Stations, and
- one report of a stolen vehicle at the San Jose Diridon Caltrain Station.

***The Transit Police would like to remind Caltrain patrons to keep your vehicle doors locked and not leave anything of value visible inside the vehicle.***

June 5: The Transit Police responded to the Watkins Avenue grade crossing in Atherton on a report of an adult male that was trespassing and had been struck by a southbound Caltrain train. Preliminary information suggests the individual may have intentionally placed himself in the path of the oncoming train. The incident is under investigation by Transit Police.

June 11: The Transit Police responded to the College Park Caltrain Station in San Jose on a report of an adult male who was at the station and acting erratically and possibly contemplating suicide. The person was located, taken into protective custody, and transported to emergency psychiatric care.

June 23: The Transit Police responded to the Palo Alto Caltrain Station on a report of an adult male at the station who was acting erratically and was reportedly unable to care for himself. The person was located, taken into protective custody, and transported to emergency psychiatric care.

June 23: The Transit Police responded to the Sunnyvale Caltrain Station on a report of an adult male that was trespassing and had been struck by a southbound Caltrain train. Preliminary information suggests the individual ignored warning signs, lights, and signals and unintentionally placed himself in the path of the oncoming train. The incident is under investigation by Transit Police.

### **Bike Thefts:**

June 1 - June 30: The Transit Police received six reports of bicycle thefts at various Caltrain stations.

### Engineering

#### Maintenance of Way

- Surfaced 29,957 lineal feet of mainline track
- Installed 34 9-foot ties and 49 new switch ties (see photo below) ranging in size between 10 feet to 17 feet in length. All the new ties are wood; the majority of this activity was conducted between 10:00 pm to 4:00 am.



*Night work – replacement of ties*



## Monthly Safety and Security Report June 2017

- CP Bird (just south of Diridon station) – track is taken out of service for the safety of the workers. Switches need periodic maintenance; the component that receives the most wear is the frog point, which needs to be ground down. After the steel is ground down, it is built back up with manganese steel. Then the track is ready to return to revenue service.



*Grinding the frog point*



*Metal flaws are removed*



*Rebuilt frog point*

## Monthly Safety and Security Report June 2017

- Vegetation removal at Redwood City to provide better visibility line of site of the Signal at MP 25.4



*Before*



*After*

## Monthly Safety and Security Report June 2017

### Stations

- Completed work at San Jose Diridon Station that was commenced the month of May 2017
  - Repainted the Men's Restroom
  - Painted the VTA bus shelters (JPB Maintenance)
  - Repainted the monument signs at Hillsdale, Belmont, & Redwood City stations



*Renewed monument sign – Hillsdale Station*

## Monthly Safety and Security Report June 2017



*Renewed monument sign – Belmont Station*



*Monument sign work in progress – Redwood City Station*