



Monthly Safety and Security Report February 2017

Safety Highlights

Caltrain continued installation of fence along the corridor to prevent individuals crossing or walking along tracks where an individual could be struck by a train.



Efforts to harden security along the Caltrain corridor also include Transit PD

monitoring and working with multiple city Police Departments along the corridor.



The fence now limits crossing tracks at many locations that people before used for short cuts. These short cuts posed the potential for an individual to be hit by a train traveling at speeds up to 79 mph. Safety is always a priority at Caltrain.



Education

Rail Safety Presentations/Activities	City	Attendees
San Mateo County Suicide Prevention Committee	San Carlos	20
Project Safety Net	Palo Alto	30



Monthly Safety and Security Report February 2017

Enforcement

Event	FEB 2017	YTD 2017
Felony and Misdemeanor Arrests (all)	10	34
Parking Citations	333	567
Traffic Citations	125	158
All Other Infraction Citations (including trespassing)	130	224
Ejections/Contacts: Train, Station, Right of Way	14	31
Proof-of-Payment Citations	0	73
Crisis Interventions w/ Emergency Commitments	5	8
Total Calls For Police Service	793	1491

Significant Events

Feb. 1 – Feb. 28: During this period, the Transit Police conducted monthly High-Intensity Strategic Enforcement Program (HISEP) initiatives targeting education and enforcement in locations where persons may engage in unsafe behavior.

- The Transit Police responded to one report of a person trespassing on the Caltrain right of way. The person was cited and released.
- The Transit Police cited 124 persons for safety violations as part of the HISEP effort.

Feb. 1 - Feb. 28: The Transit Police responded to two reports of intoxicated persons at two Caltrain Stations. In each instance, the person was arrested and booked into county jail.

Feb. 1 - Feb. 28: The Transit Police conducted routine security checks at various Caltrain stations. As a result, two persons were arrested on outstanding misdemeanor warrants. In each instance, the person was booked into county jail.

Feb. 1 - Feb. 28: Transit Police received:

- six reports of vehicle burglaries at the Palo Alto Caltrain Station,
- one report of vehicle vandalism at the San Mateo Caltrain Station, and
- one report of a stolen vehicle at the Lawrence Caltrain Station.

The Transit Police would like to remind Caltrain patrons to keep your vehicle doors locked and not leave anything of value visible inside the vehicle.



Monthly Safety and Security Report February 2017

Feb. 2: The Transit Police responded to the San Carlos Caltrain Station on a report of an adult male who was acting erratically. The person was located, taken into protective custody and transported to emergency psychiatric care.

Feb. 2: The Transit Police responded to the San Jose Diridon Caltrain Station on a report of an adult male who was acting erratically and possibly contemplating suicide. The person was located, taken into protective custody and transported to emergency psychiatric care.

Feb. 7: The Transit Police responded to the Redwood City Caltrain Station on a report of an adult male who was acting erratically and combative. The person was located, taken into protective custody and transported to emergency psychiatric care.

Feb. 11: The Transit Police responded to the Palo Alto Caltrain Station and the Mountain View Caltrain Station on two reports of adult males who were acting erratically and may have been contemplating suicide. In each case, the person was located, taken into protective custody and transported to emergency psychiatric care.

Feb. 13: The Transit Police responded to a report of an adult male trespassing on the Caltrain right of way that was struck by a southbound Caltrain train at the Brewster Avenue grade crossing in Redwood City. Preliminary information suggests the person may have intentionally placed himself in the path of the oncoming train. The incident is under investigation by the Transit Police.

Feb. 15: The Transit Police responded to the Palo Alto Caltrain Station on a report of an adult female who was acting erratically and possibly contemplating suicide. The person was located, taken into protective custody and transported to emergency psychiatric care.

Feb. 22: The Transit Police responded to a report of an adult female trespassing on the Caltrain right of way in Santa Clara that was struck by a northbound Caltrain train. Preliminary information suggests the subject may have intentionally placed herself in the path of the oncoming train. The incident is under investigation by the Transit Police.

Bike Thefts:

Feb. 1 - Feb. 28: The Transit Police received eleven reports of bicycle thefts at various Caltrain stations.

Engineering

Communications & Signals

Replaced both signal & track components at Control Point Mack north of Tamien Station. For safety purposes, a time work window was established to allow two groups to work together: one to change the power switch machine and the other to change two Head Block Ties, which provide the foundation. Maintaining crossovers such as this one is essential to provide safe passenger service.



Monthly Safety and Security Report February 2017



Maintenance of Way

At the request of the Palo Alto Police to provide easier vehicular access to the area, additional ballast was added south of the grade crossing at Alma Avenue. This facilitates Track Watch and provides for easier access by TASI personnel.



Before



After

Monthly Safety and Security Report February 2017

To help lessen the risk of flooding adjacent private properties, the vegetation along our right of way was removed and a “V” ditch was cut to channel water away from the adjacent buildings, which are located in Belmont.



Before



After

Track safety inspection resulted in finding a broken rail in the South San Francisco yard:



Broken rail found on Track 3 in South San Francisco Yard

The track rail was repaired:

Monthly Safety and Security Report February 2017



Cutting out the defective rail



new ties and rail replaced



Replaced damaged fence posts and fabric

Other Maintenance of Way safety work performed:

- Installed 700 tons of yard track ballast
- Ground 31 switches along the corridor to safely prolong the longevity of these components
- Surfaced 34,735 lineal feet of main line track
- Replaced 20 rails after Sperry Rail car tested all tracks looking for internal rail defects
- Installed 140 new wood ties along the main line

Monthly Safety and Security Report February 2017

Stations

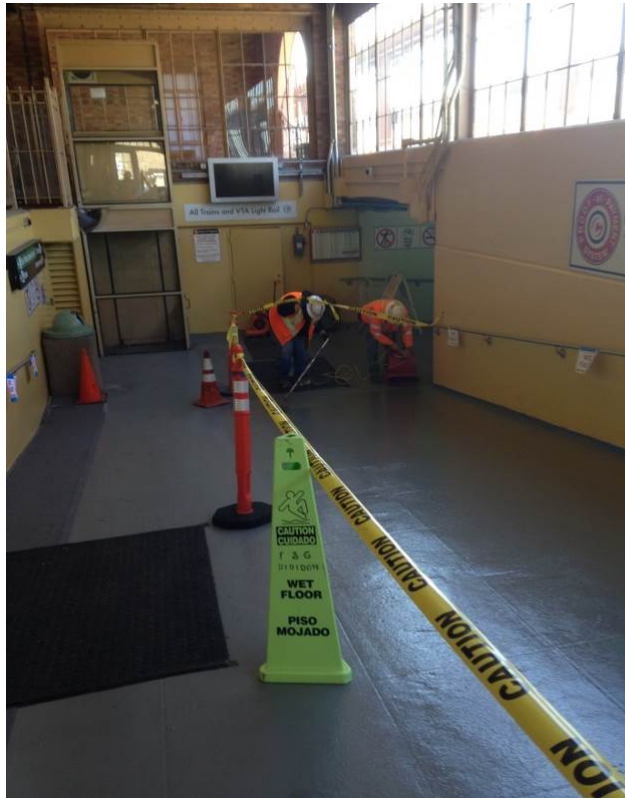


Continued pumping water out of Hillsdale east side parking; Bay Meadows contractor construction work has created a problem at this leased area



Facility maintenance - painted 37 interior doors & frames at Menlo Park facility

Monthly Safety and Security Report February 2017



State of Good Repair work at San Jose Diridon ramp, sand is added to paint to prevent slips



Continuous improvement - repainting numbers in our stations' parking lots