

Safety Highlights

After constructing a temporary track to maintain train service south of the San Jose Diridon Station, Caltrain demolished the railroad bridge over the Los Gatos Creek taking great care to avoid contamination into the creek.



Los Gatos Creek Bridge Replacement

Two separate railroad bridges will be erected to rebuild main tracks 1 and 2. These tracks will restore the corridor for Caltrain, Amtrak, ACE passenger trains and Union Pacific railroad freight trains.



Rebar cages for Railroad Bridge columns

Caltrain Engineering & Construction and Safety departments oversee design safety specifications throughout construction to include pilings underground and columns above ground. Once these support features are erected, the girders will provide the foundation to construct the bridge decks prior to completing the track structure work.

At Caltrain, safety, and security are always priority in maintaining reliable and dependable service.



Monthly Safety and Security Report August 2017

Education

Rail Safety Presentations/Activities	City	Attendees
San Mateo County Suicide Prevention Committee	San Mateo	20
Project Safety Net	Palo Alto	25
NorCal Rail Safety Team Meeting	CPUC Office – Sacramento	15

Enforcement

Event	AUG 2017	YTD 2017
Felony and Misdemeanor Arrests (all)	10	115
Parking Citations	483	2861
Traffic Citations	28	373
All Other Infraction Citations (including trespassing)	51	596
Ejections/Contacts: Train, Station, Right of Way	27	247
Proof-of-Payment Citations	0	73
Crisis Interventions w/ Emergency Commitments	4	26
Total Calls For Police Service	805	6746

Significant Events

Aug. 1 – Aug. 31: During this period, the Transit Police conducted monthly High-Intensity Strategic Enforcement Program (HISEP) initiatives targeting education and enforcement in locations where persons may engage in unsafe behavior.

- The Transit Police responded to two reports of persons trespassing on the Caltrain right of way. In each instance, the person was cited and released.
- The Transit Police cited 49 persons for safety violations as part of the HISEP effort.

Aug. 1 – Aug. 31: The Transit Police conducted several enforcement measures in association with Caltrain’s special baseball service:

- Extra security details were assigned to the 4th and King Station in San Francisco.
- One person was cited for ‘minor in possession of alcohol’ and released.
- One person was arrested for ‘public intoxication of alcohol’ and was booked into county jail.



Monthly Safety and Security Report August 2017

Transit Police would like to remind Caltrain patrons to drink responsibly. Please remember that drinking alcoholic beverages is prohibited after 9:00 PM on all southbound trains leaving the San Francisco Caltrain Station after special events.

Aug. 1 – Aug. 31: The Transit Police conducted routine security checks at various Caltrain stations. As a result, two persons were arrested on outstanding misdemeanor warrants and one person was arrested on outstanding felony warrant. In each instance, the person was booked into county jail.

Aug. 1 – Aug. 31: Transit Police received -

- five reports of vehicle burglaries at various Caltrain Stations
- two reports of vehicle vandalism at the Mountain View Caltrain Station and Redwood City Caltrain Station
- one report of a stolen vehicle at the Redwood City Caltrain Station

The Transit Police would like to remind Caltrain patrons to keep your vehicle doors locked and not leave anything of value visible inside the vehicle.

Aug. 2: The Transit Police responded to the San Francisco Caltrain Station on a report of an adult male who was acting erratically and possibly contemplating suicide. The person was located, taken into protective custody, and transported to emergency psychiatric care.

Aug. 3: The Transit Police responded to the Burlingame Caltrain Station on a report of an adult male who was acting erratically and possibly contemplating suicide. The person was located, taken into protective custody, and transported to emergency psychiatric care.

Aug. 17: The Transit Police responded to the San Jose Diridon Caltrain Station on a report of an adult female who was acting erratically and attempting to harm herself and possibly others. The person was located, taken into protective custody, and transported to emergency psychiatric care.

Aug. 18: The Transit Police responded to the San Jose Diridon Caltrain Station on a report of an adult female who was acting erratically and possibly contemplating suicide. The person was located, taken into protective custody, and transported to emergency psychiatric care.

Bike Thefts:

Aug. 1 – Aug. 31: The Transit Police received nine reports of bicycle thefts from various Caltrain stations.

Engineering

Maintenance of Way

- Surfaced 20,858 lineal feet of mainline track
- Surfaced 5 turnouts, grounded 4 switches to prolong their life, completed and successfully tested 10 new thermite welds and installed 86 new 9-foot wood ties along the main track
- Completed vegetation removal and tree trimming along the Burlingame setout track (north of the Burlingame station), restored unobstructed sightlines and cleared area



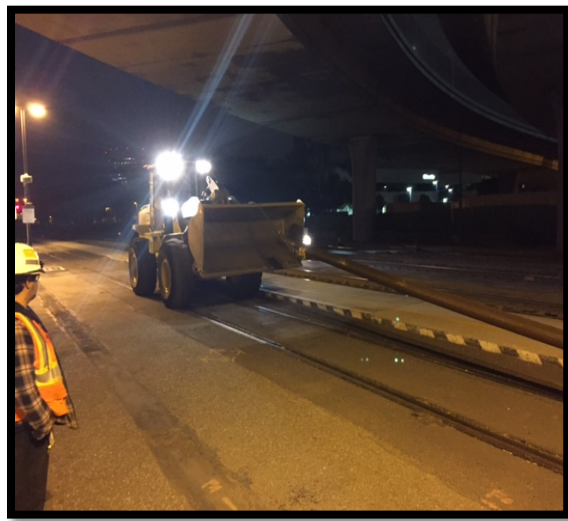
Before



After

Monthly Safety and Security Report August 2017

- Relocated 67 pieces of rail north of South San Francisco station in preparation for Electrification Overhead Contact System (OCS) poles. This included rails with lengths as long as 500 feet, which had to be moved meticulously with equipment approximately 1 mile.



- Cleaned up property adjacent to main track 1 (east track) in Redwood City at the south end of the station beyond the platform



Before



After

Monthly Safety and Security Report August 2017

Stations

- Removed six trees that were diseased next to Crew Quarters at 5th Street & Townsend Street in San Francisco, several limbs created Safety Hazards for personnel



- Completed Station of the Month work at the north and south ends of 22nd Street station



Before



After

Monthly Safety and Security Report August 2017

Communication & Signals

- Signal now maintains a small inventory of components to protect the railroad in the event of accidents that occur at our grade crossings (for example, recently at Mary Avenue in Sunnyvale; photos follow)



Crossing gate destroyed



Replacement gate ready in Menlo Park facility