

## Safety Highlights

Caltrain safety representatives randomly monitor night work that is conducted over tracks to ensure safety of workers, tracks, and equipment.



*22<sup>nd</sup> Street Station - Bridge Work Over Tracks*

Night work is conducted to provide uninterrupted service for passengers during the day and protect workers.

On-track Safety Job Briefings are provided to workers so they understand and can question on track safety protection. When needed, safety stand downs are conducted to manage hazards by developing corrective action.



*RWICs Conduct Job Briefings before Work Starts*

Caltrain regards safety as a priority for all workers and passenger train operations.

## Education

Rail Safety Presentations/Activities	City	Attendees
NorCal Rail Safety Team Meeting	San Jose	20
San Mateo County Suicide Prevention Committee	San Carlos	10



## Monthly Safety and Security Report April 2017

### Enforcement

Event	APRIL 2017	YTD 2017
Felony and Misdemeanor Arrests (all)	14	63
Parking Citations	241	1199
Traffic Citations	82	261
All Other Infraction Citations (including trespassing)	89	379
Ejections/Contacts: Train, Station, Right of Way	34	100
Proof-of-Payment Citations	0	73
Crisis Interventions w/ Emergency Commitments	2	13
Total Calls For Police Service	864	3236

### Significant Events

Apr. 1 – Apr. 30: During this period, the Transit Police conducted monthly High-Intensity Strategic Enforcement Program (HISEP) initiatives targeting education and enforcement in locations where persons may engage in unsafe behavior.

- The Transit Police responded to four reports of persons trespassing on the Caltrain right of way. In each instance, the person was cited and released.
- The Transit Police cited 85 persons for safety violations as part of the HISEP effort.

Apr. 1 - Apr. 30: The Transit Police conducted several enforcement measures in association with Caltrain's special baseball service:

- Extra security details were assigned to the 4th and King Station in San Francisco.
- Three people were cited for 'minor in possession of alcohol'.

Apr. 1 - Apr. 30: The Transit Police responded to six reports of intoxicated persons at various Caltrain Stations. In each instance, the person was arrested and booked into county jail.

Apr. 1 - Apr. 30: The Transit Police conducted routine security checks at various Caltrain stations. As a result, four persons were arrested on outstanding misdemeanor warrants. In each instance, the person was booked into county jail.



## Monthly Safety and Security Report April 2017

Apr. 1 – Apr. 30: Transit Police received one report of vehicle burglary at the Burlingame Caltrain Station.

***The Transit Police would like to remind Caltrain patrons to keep your vehicle doors locked and not leave anything of value visible inside the vehicle.***

Apr. 2: The Transit Police responded to the Bayshore Caltrain Station in Brisbane on a report of an adult male who was acting erratically and possibly contemplating suicide. The person was located, taken into protective custody and transported to emergency psychiatric care.

Apr. 8: The Transit Police responded to the Millbrae Caltrain Station on a report of vandalism. The person was booked into county jail.

Apr. 13: The Transit Police responded to the 4<sup>th</sup> and King Caltrain Station in San Francisco on a report of an adult male who was acting erratic and possibly contemplating suicide. The person was located, taken into protective custody, and transported to emergency psychiatric care.

Apr. 18: The Transit Police received a report of sexual assault that occurred on Caltrain property. An investigation is ongoing and so far has revealed that this is an isolated incident, and a suspect has been identified.

### **Bike Thefts:**

Apr. 1 - Apr. 30: The Transit Police received thirteen reports of bicycle thefts at various Caltrain stations. The largest number of thefts (four) occurred at the Palo Alto Caltrain Station.

Apr. 4: The Transit Police received a report of a bicycle theft having occurred onboard Caltrain train #322. The train stopped at the Redwood City Caltrain Station where the bicycle owner was contacted. A Caltrain patron took a digital photograph of the suspect who stole the bike. The individual was later arrested in San Jose and booked into county jail. A subsequent interview with the suspect resulted in an admission and an apology to the bicycle owner. However, the bicycle was not recovered.

Apr. 18: The Transit Police responded to the Palo Alto Caltrain station on a report of an individual in possession of a stolen bicycle. The individual was contacted, and it was determined that the bicycle was not his. The individual was cited for possession of stolen property and then released. The bicycle was returned to the owner.

## Engineering

### Maintenance of Way

Conducted grade crossing maintenance work at Glenwood Avenue in Menlo Park during the weekend of April 21<sup>st</sup> to 24<sup>th</sup>. This required closure of the grade crossing to conduct this state of good repair work. The work included resurfacing and realignment of both tracks. This provides a safer and smoother grade crossing for bicyclists, pedestrians, and vehicles.

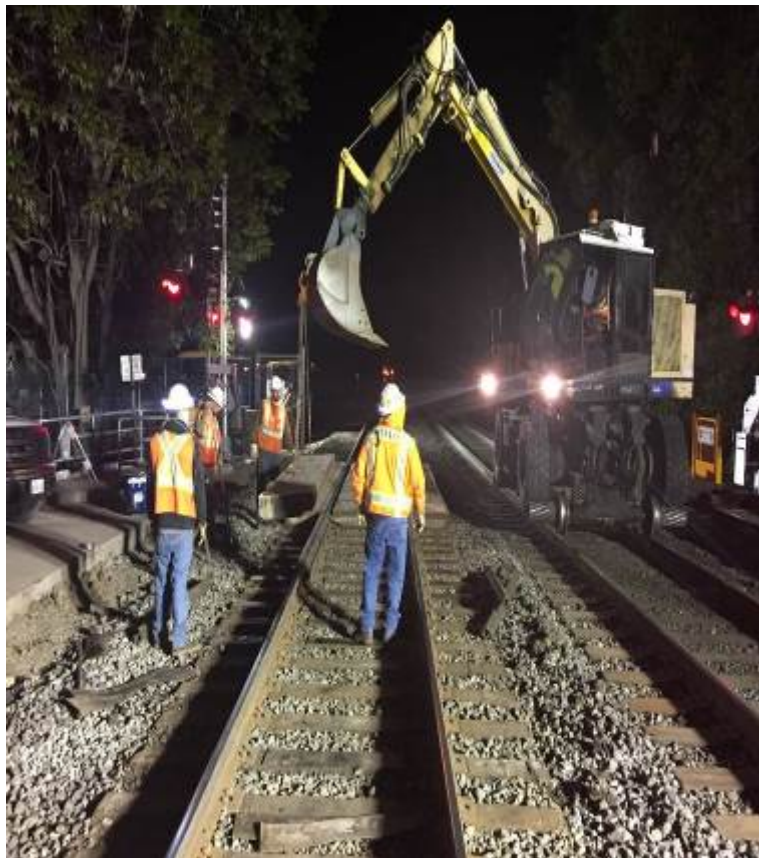


*Friday night project start – removal of asphalt/concrete*

# Monthly Safety and Security Report April 2017



*Saturday – surfacing the track*



*Saturday night – concrete panel installation*

## Monthly Safety and Security Report April 2017



*Sunday afternoon – Glenwood Avenue is re-surfaced and ready*



Red reflective pavement markers were procured & installed at East Meadow Drive in Palo Alto to warn wayward motorists from turning onto our tracks; no incidents have been reported since installation.

- Surfaced 20,104 lineal feet of main line track
- Completed 17 new thermite welds, all welds were tested and successfully completed
- Completed tree trimming and fencing repairs at 16 separate locations

## Monthly Safety and Security Report April 2017

### Communications & Signals

Caltrain commenced the installation of FRA mandated Emergency Notification Signs (ENS) at all 42 Grade Crossings. One sign needs to be installed on both the west and east approaches of every grade crossing that Caltrain maintains. A total of 84 signs will be installed over the next couple of months to comply with new requirements and provide the public a phone number in the event on an emergency or problem near a grade crossing: 1-877-723-7245 (1-877-SAF-RAIL).



*Glenwood Avenue in Menlo Park (MP 28.45) facing east direction*

# Monthly Safety and Security Report April 2017



*Close up view of the new sign*



*Signalmen replace track leads at reconstructed grade crossing*



*The completed signal project at Glenwood Avenue*

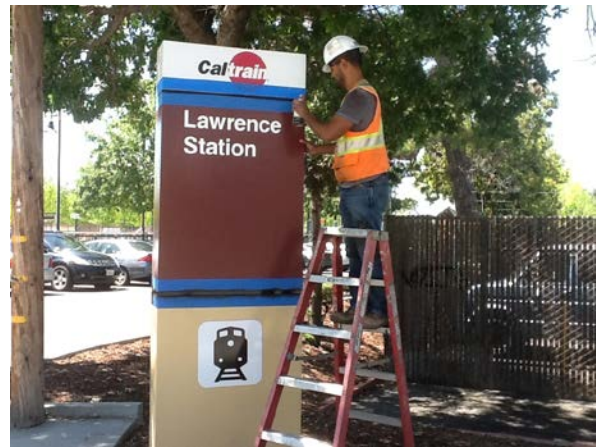


## Monthly Safety and Security Report April 2017

### Stations

Training provided focused on the following areas:

- HVAC controls II
- Painting systems II
- Surface preparation - rust
- Storm Drain maintenance plan



*Repainting of the monument signs at Capitol & Lawrence Stations*

- Prepared Bid documents to recoat the entire floor at San Francisco 4<sup>th</sup> & King Station planned for May 2017.

### Station of the month for April 2017 – Belmont



*Repainted 6-inch tactile tile, yellow line, and platform markings*

**Monthly Safety and Security Report  
April 2017**



*Prepared and painted the passenger shelters inside and outside*