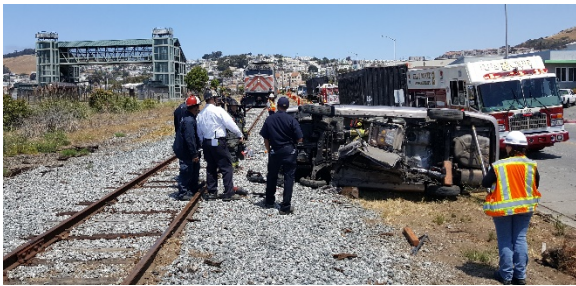


Safety Highlight

Caltrain conducted its annual full scale simulation exercise with two first ever events – 1) the San Francisco Fire Department (SFFD) and the North County Fire Authority (NCFA) coordinated preparedness and response collaboratively and 2) extricated an individual with a mobility disability during the exercise.



Simulated vehicle collision – SM County

This emergency preparedness and response exercise was conducted at the Caltrain Bayshore Station, which is located within both San Francisco and San Mateo counties. The train was staged on both counties on the adjacent tail track. Using the tail track provided protection for all exercise participants segregated from revenue service trains on the main tracks.



Medical, Fire, and bus support provided



Staged rescue and treatment area

Fire Fighter emergency response practices vary between the SFFD and NCFA, so this provided the opportunity to work collaboratively and learn the others' response methods. As such, emergency responders representing both counties participated and worked well with a sense of urgency.

Also, a Traffic Management Plan provided by the District's Transit PD was also incorporated into this exercise to manage traffic and minimize disruption to local community traffic.



Evacuation and medical care – SF County

Overall, the exercise proved effective for all parties involved. At Caltrain, safety and security to include emergency preparedness are always a priority as part of our passenger service commitment to safe reliable service.



Monthly Safety and Security Report July 2018

Peninsula Corridor Electrification Project (PCEP) Safety/Security

PCEP Safety and Security Certification – Certifiable Elements

The Caltrain Safety and Security Certification program and process was initiated since the inception of the PCEP. The program required that the contractor develop a list of “certifiable elements”, that is those things that will be certified prior to the system being placed into revenue service.

Each Certifiable element was broken down into a number of “items” that are placed on a Design Criteria Checklist (DCC). This checklist refers to the approved design criteria for the project. Once the DCC is developed, the designer of record will enter the drawing number or specification section that can verify that will be used to verify the design has been incorporated properly. A Safety & Security Certification Review Committee, made up of project personnel and design team representatives will then verify that the information on the checklists adequately addresses the design criteria. When all items on a particular checklist have been verified by the committee, the checklist is approved.

This process is repeated for each Certifiable Element. Examples of Certifiable Elements for PCEP include:

- Traction Power Stations (TPS)
- Overhead Contact System (OCS)
- Traction Power Return System
- Signaling/Train Control
- SCADA system
- Corrosion Control
- Communications
- Stations
- Structures
- Grade Crossings
- Track
- Civil Engineering related work
- Grounding/Bonding
- Electromagnetic Compatibility

Similar checklists are created for each Certifiable Element to verify satisfactory construction. Safety and Security Certification is provided once the items are deemed acceptable based on conformance accordingly.



Monthly Safety and Security Report July 2018

Education

Rail Safety Presentations/Activities	City	Attendees
Rail Safety Presentation	San Carlos	10
Project Safety Net	Palo Alto	25
PCEP Fire Life Safety Committee	San Mateo	8

Enforcement

Event	JUN 2018	YTD 2018
Felony and Misdemeanor Arrests (all)	16	98
Parking Citations	473	3609
Traffic Citations	103	431
All Other Infraction Citations (including trespassing)	55	449
Ejections/Contacts: Train, Station, Right of Way	40	217
Proof-of-Payment Citations	130	194
Crisis Interventions w/ Emergency Commitments	6	24
Total Calls For Police Service	957	6250

Significant

July 1 – July 31: During this period, the Transit Police conducted monthly High-Intensity Strategic Enforcement Program (HISEP) initiatives targeting education and enforcement in locations where persons may engage in unsafe behavior.

- The Transit Police responded to four reports of persons trespassing on the Caltrain right of way. In each instance, the person was cited and released
- The Transit Police cited 49 persons for safety violations as part of the HISEP effort.



Monthly Safety and Security Report July 2018

July 1 – July 31: The Transit Police conducted routine security checks at various Caltrain stations. As a result, two persons were arrested on outstanding felony warrants and two persons were arrested on outstanding misdemeanor warrants. In each instance, the person was booked into county jail.

July 1 – July 31: Transit Police responded to six reports of individuals who appeared to be a danger to themselves. In each instance, the person was located, taken into protective custody, and transported to emergency psychiatric care.

July 1- July 31: Transit Police responded to two reports of intoxicated persons at various Caltrain stations. In each instance, the person was booked into county jail.

July 1- July 31: Transit Police continued several enforcement measures in association with Caltrain's special baseball service:

- Extra security details were assigned to the 4th and King Station in San Francisco. One minor was cited for minor in possession of alcohol

The Transit Police would like to remind Caltrain patrons to keep vehicle doors locked and not leave anything of value visible inside the vehicle.

July 1- July 31: Transit Police received –

- four reports of vehicle burglaries at various Caltrain stations
- two reports of stolen vehicles at various Caltrain stations
- one report of recovered stolen vehicle at the Caltrain Tamien Station in San Jose

July 5: The Transit Police responded to a report of an adult male trespassing on the Caltrain right of way near the Brewster Avenue grade crossing in Redwood City and was struck by a southbound Caltrain train. The incident is under investigation by the Transit Police.

July 19: The Transit Police responded to a report of a juvenile male trespassing near the Mary Avenue grade crossing in Sunnyvale and was struck by a northbound Caltrain train. The incident is under investigation by the Transit Police.

Bike Thefts:

July 1 – July 31: The Transit Police received in total 10 reports of bicycle thefts:

- two thefts occurred onboard Caltrain trains
- eight bicycle thefts occurred at various Caltrain stations. The largest number of thefts (five) occurred at the Palo Alto Caltrain Station.

Please visit www.smcsheriff.com/patrol-services/transit-police-bureau for tips to keep your bicycle safe.

Monthly Safety and Security Report July 2018

Engineering

Maintenance of Way

- Surfaced 6,484 lineal feet of mainline track
- Performed maintenance grinding and welding on 28 turnouts on the mainline and installed 50 new railroad ties.
- 1 reported fire on Caltrain property occurred:
 - Woodside overpass in Redwood City – 7/10/18 @ 10:00 AM – homeless encampment fire
- 2 pedestrian (trespassing on right of way) strikes occurred:
 - Brewster Avenue in Redwood City – 7/5/18 @ 6:58 PM – MT2
 - Mary Avenue in Sunnyvale – 7/19/18 @ 9:20 PM – MT1
- Peninsula Corridor Electrification project relocation at Redwood City yard:



Redwood yard before relocation. Picture shows track materials including rail, concrete ties, switch ties, and other track components.

Monthly Safety and Security Report July 2018



Redwood yard after material has been moved. Note: red circles to match locations from bird's eye view

- New track materials laydown yard along the Dumbarton line at 2nd Ave. and Northside Ave. in Redwood City

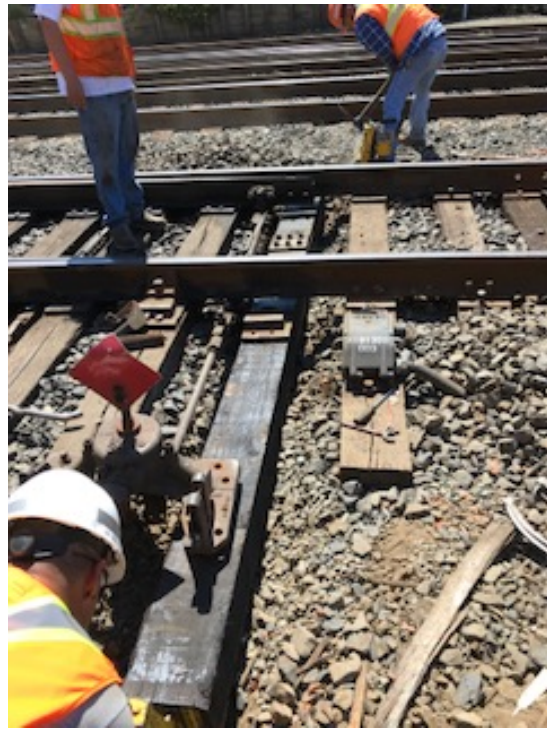


Monthly Safety and Security Report July 2018

- Repair work completed on mainline switch that was damaged by contractor just north of South San Francisco Station; replaced ties and re-adjusted switch



Before



After

- Install new switch stand with an ergonomic handle in the South San Francisco Yard



Monthly Safety and Security Report July 2018

- Install new switch ties in San Francisco yard:



- ROW clean up in San Francisco yard along tracks 29 & 30:

