



***COVID-19 PRODUCTIVITY REPORT***  
***March – June 2020***

***Citizens Advisory Committee***  
***August 19, 2020***  
***Agenda Item #8***

# **WFH NOT US? Over 50 projects completed...**

---

- Track – Installed new walkway rock at 12 station tracks SF (10)
- Stations – New bird netting at Airport Avenue & Taylor Street (13)
- Right of Way – New fencing in SF at Iowa St, Pennsylvania & Palou Ave, San Carlos man & vehicle gate (5)
- Communications – Dragger equipment software upgrade (13)
- Signal – Installed solid state Circuit Controller at 3<sup>rd</sup> Ave (13)

# TRACK SOGR

---

- Worked with Operations to utilize NEW Work Windows, as Passenger Service was reduced, our focus was on the following:
  1. Track Maintenance
  2. Track Upgrades
  3. Capital Project Support

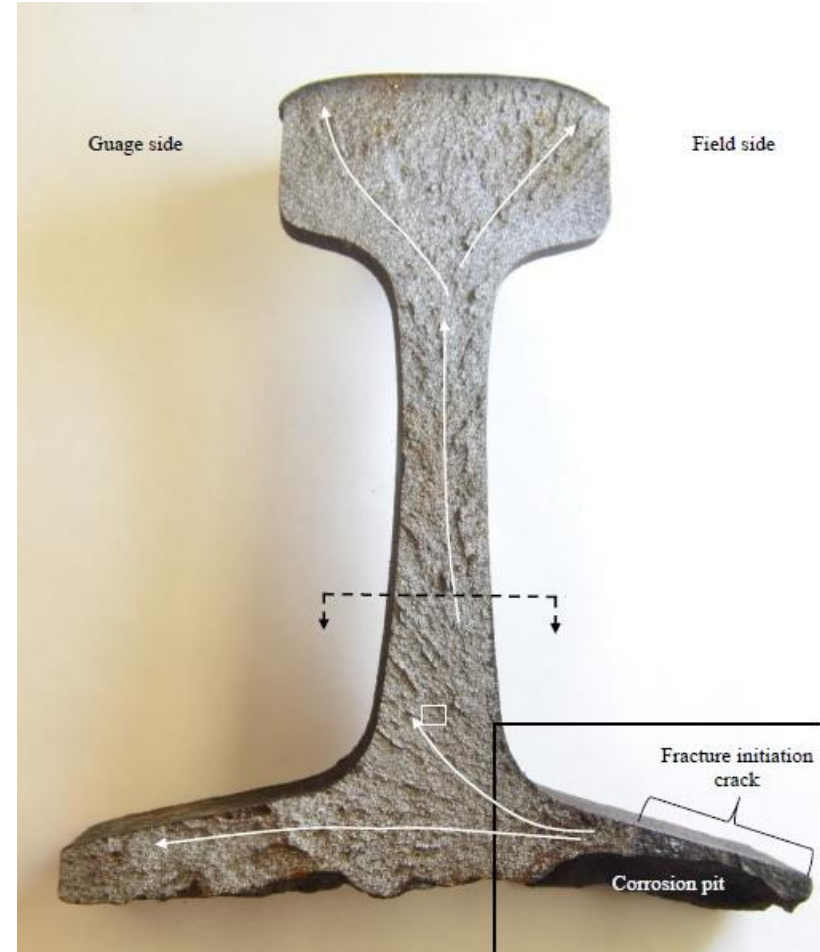
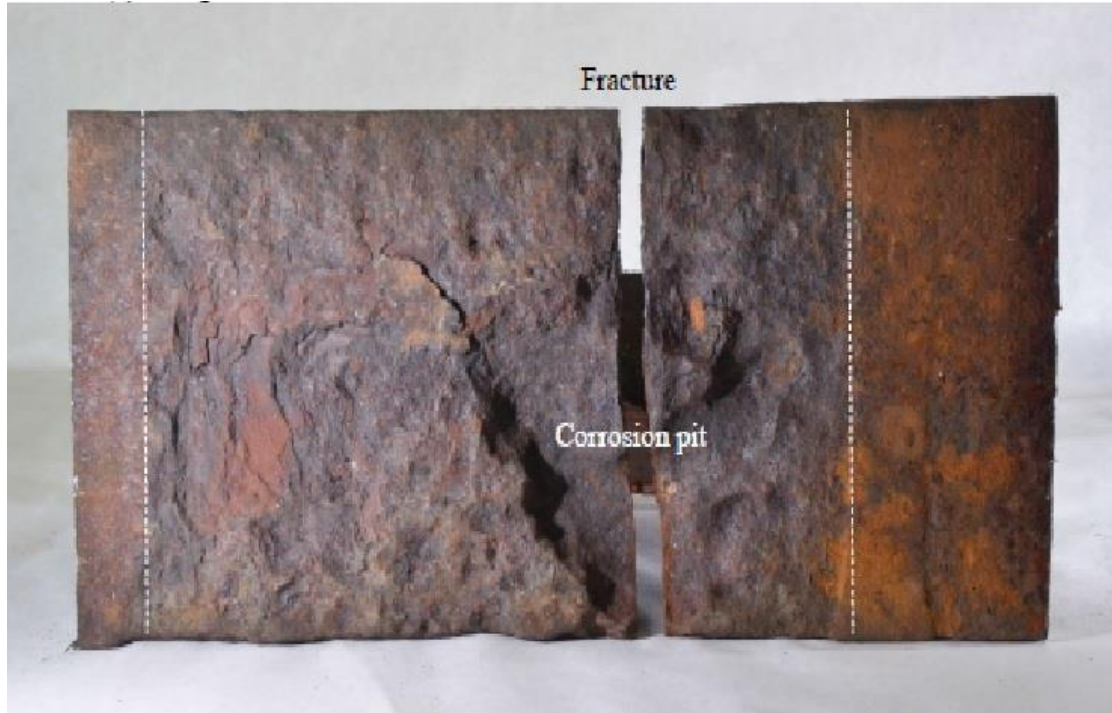
# 22<sup>nd</sup> St. Rail Replacement

---



- Rail fracture at MP 1.60 on the MT2 track, West Rail
- Fracture occurred on 12/4/2019 under Train number 102 Southbound
- Track back into service 3 hours later
- Rail produced in early 1970's, standard AREA 136 LB Rail

# 22<sup>nd</sup> St. Fractured Rail Lab Photos



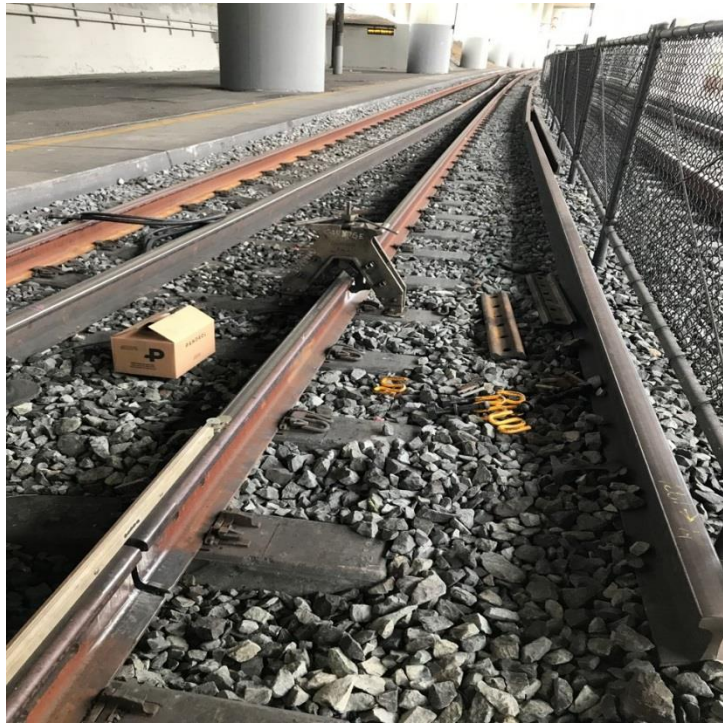
# 22<sup>nd</sup> St. Rail Replacement

---



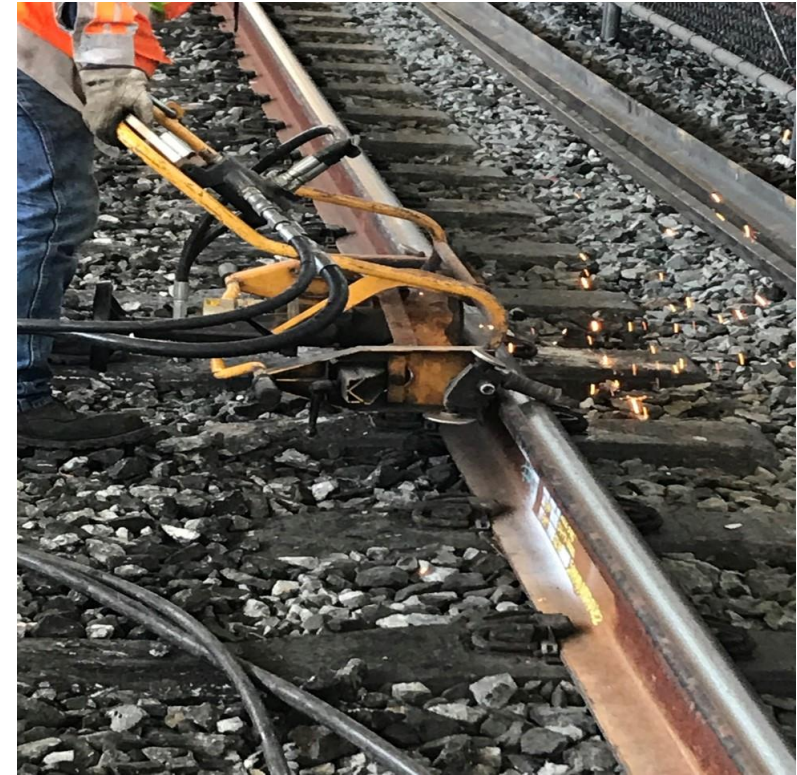
- Approximately 5000 Lineal Feet of rail removed and replaced. With no impact to train operations.

# Thermite Welding in Track



# Thermite Welding in Track

---





# The Completed Weld

---



# New Rail Lubricator at MP 9.51 MT2



# CP Shark Switch 7A Spring Frog Replacement



# South San Francisco Crossover Removals

---



# 25<sup>th</sup> Ave. Track Stabilizing Support

---



# CP Shark Tie Replacement



- CP Shark Switch 5 and 5A removed from service
- Long ties(10' -16') removed and replaced with 9' ties to allow for PCEP construction work

# San Mateo Bridges – Walkway Installation



- California Public Utilities Commission(CPUC) issued correction notice
- CPUC walkways were not constructed during the San Mateo Bridges project in 2017
- Minimum of 8:1 sloped ramps required for walkways
- 4 walkways required at each bridge, 16 total

# Crash Beam Strike At Tilton Ave.

---



- This is what a bad Friday really looks like...
- Expect the unexpected when working around the railroad



# Questions?

---