



Quarterly Capital Program Status Report and DBE Status Report

Prepared for the March 07, 2019 Caltrain Board Meeting

2nd Quarter FY2019: October 01, 2018 – December 31, 2018

Peninsula Corridor Joint Powers Board



TABLE OF CONTENTS

Capital Program - Budget Status Summary	1
Traffic Light Report	3
25th Avenue Grade Separation Project	4
Burlingame Broadway Grade Separation Project (Preliminary Design/Environmental Clearance)	6
F-40 Locomotive Mid-Life Overhaul Project	8
Grade Crossing Improvement Project - FY2016	10
Grade Crossing Improvements in Redwood City Project	12
Guadalupe River Bridges Replacement and Extension Project (Preliminary Design/Environmental Clearance)	14
Marin Street and Napoleon Avenue Bridge Closure Project	16
Mary Avenue Traffic Signal Project	18
MP-36 Locomotive Mid-Life Overhaul Project	20
Railroad Communications System Project - FY2017	22
Right of Way Fencing Project	24
Santa Clara County Grade Crossing Medians Project	26
South San Francisco Station Improvement Project	28
South Terminal Phase II Project (Preliminary Design/Environmental Clearance)	30
Station Enhancement and Renovation Project	32
Sunnyvale Station Platform Rehabilitation Project	34
Systemwide Signal System Rehabilitation Project - FY2016	36
Systemwide Signal System Rehabilitation Project - FY2017	38
Systemwide Station Improvements Project - FY2016	40
Systemwide Station Improvements Project - FY2017	42
Systemwide Track Rehabilitation Project – FY2017	44
DBE Status Report	47
Definition of Terms	48
Performance Status (Traffic Light) Criteria / Schedule Legend	49

Caltrain - Capital Program - Budget Status Summary

2nd Quarter FY2019 - October 01, 2018 to December 31, 2018

All Costs in \$1,000's

Programs						
	FY2014	FY2015	FY2016	FY2017	FY2018	FY2019
1. Station and Intermodal Access	\$3,575	\$3,483	\$39,756	\$1,450	\$745	\$6,600
2. Right of Way / Signal & Communications	\$56,502	\$22,275	\$40,350	\$180,232	\$22,438	\$19,872
3. Rolling Stock	\$6,221	\$3,900	\$4,000	\$6,997	\$12,826	\$17,034
4. Operational Improvements/Enhancements	\$4,423	\$2,271	\$2,844	\$4,723	\$31,054	\$2,050
5. Planning and Studies	\$2,790	\$1,740	\$4,220	\$2,756	\$3,040	\$6,365
6. Caltrain Modernization Program	\$30,047	\$9,291	\$122,529	\$315,873	\$0	\$248,438
7. Legal Mandates & Required Enhancements	\$155,464	\$1,595	\$3,337	\$14,721	\$1,220	\$1,327
Total Board Approved Budget by FY	\$259,022	\$44,555	\$217,036	\$526,752	\$71,323	\$301,686

Some of the major projects in progress or completed include, but are not limited to the following:

Currently in Progress

25th Avenue Grade Separation Project
 Burlingame Broadway Grade Separation Project
 PTC Project
 Caltrain Right of Way Fencing Project
 F-40 Locomotive Mid-Life Overhaul Project
 Grade Crossing Improvement Projects
 Guadalupe River Bridge Replacement and Extension Project
 Marin and Napoleon Bridge Closure Project
 Mary Avenue Traffic Signal Project
 South San Francisco Station Improvements Project
 Station Enhancements and Renovation Project
 Sunnyvale Station Rehabilitation Project
 Systemwide Signal Rehabilitation Project
 Systemwide Station Rehabilitation Project
 Systemwide Track Rehabilitation Project

Completed Projects

Jerrold Avenue Bridge Replacement Project
 Los Gatos Bridge Replacement Project
 Narrow Banding Project
 Quint Street Bridge Project
 Rail Grinding Project
 Real Time Transit Information Project - Predictive Arrival/Departure System (PADS)
 San Bruno Grade Separation Project
 San Francisco Bridge Replacement Project
 San Mateo Bridges Rehabilitation Project
 South Terminal and Santa Clara Stations Improvements Project
 Wayside Power at Diridon Station Project

Note: The "Total Board Approved Budget by FY" reflects the annual fiscal year capital budget approved by the Caltrain Board. This authorizes the amount that can be spent on projects. Unspent budget in a fiscal year may be carried forward to subsequent budget years.

This page is intentionally left blank.

TRAFFIC LIGHT REPORT

The following projects represent a sub-set of the total Capital Program and have been selected for inclusion into the Quarterly Report due to project value, operational significance, and/or impact on customers.

	SCOPE		SCHEDULE		BUDGET / COST		SAFETY		
	Q1 FY19	Q2FY19	Q1 FY19	Q2FY19	Q1 FY19	Q2FY19	Q1 FY19	Q2FY19	
25th Ave. Grade Separation Project									4
Burlingame Broadway Grade Separation Project (Preliminary Design/Environmental Clearance)									6
F-40 Locomotive Mid-Life Overhaul Project									8
Grade Crossing Improvement Project – FY2016									10
Grade Crossing Improvements in Redwood City Project									12
Guadalupe River Bridges Replacement and Extension Project (Preliminary Design/Environmental Clearance)									14
Marin Street and Napoleon Avenue Bridge Closure Project									16
Mary Avenue Traffic Signal Project									18
MP-36 Locomotive Mid-Life Overhaul Project									20
Railroad Communications System Project - FY2017									22
Right Of Way Fencing Project									24
Santa Clara County Grade Crossing Medians Project									26
South San Francisco Station Improvement Project									28
South Terminal Phase II Project (Preliminary Design/Environmental Clearance)									30
Station Enhancement and Renovation Project									32
Sunnyvale Station Platform Rehabilitation Project									34
Systemwide Signal System Rehabilitation Project - FY2016									36
Systemwide Signal System Rehabilitation Project - FY2017									38
Systemwide Station Improvements Project - FY2016									40
Systemwide Station Improvements Project - FY2017									42
Systemwide Track Rehabilitation Project - FY2017									44



= Project On-Hold



= No Issues



= Notable Issues



= Significant Issues

25th AVENUE GRADE SEPARATION PROJECT



SCOPE:



This project will raise the vertical alignment and provide grade separations between Hillsdale Boulevard and SR-92 in the City of San Mateo, including:

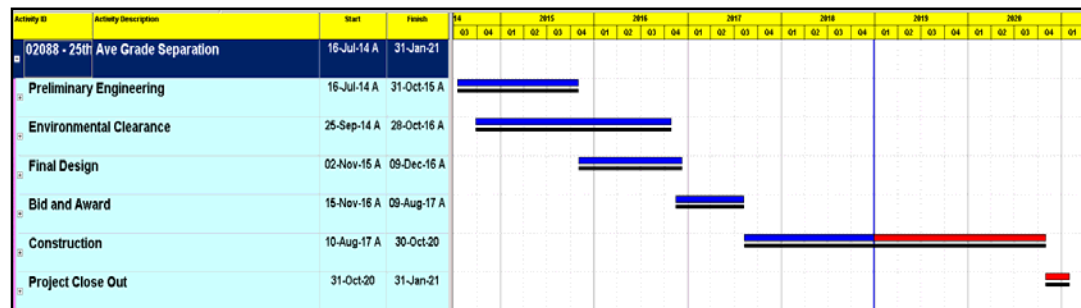
- Grade separating the 25th Avenue at-grade crossing.
- Construction of two new grade separated crossings at 28th and 31st Avenues.
- Perform relocation of the existing Hillsdale Caltrain station. The new station will be an elevated, center-board platform, located south of 28th Avenue.

Scope includes final design/environmental (CEQA and NEPA) clearance work and construction to replace the existing 25th Avenue at-grade crossing with a two-track elevated grade separation. The elevated rail alignment will require the relocation of the existing Hillsdale Caltrain Station northward to a location between 28th and 31st Avenues and will allow for new street connections between El Camino Real and Delaware Street at 28th and 31st Avenues in San Mateo, California.

Issues:

None.

SCHEDULE:



Issues:

Project baseline schedule was rebaselined per the approval of CCO-040 - project wide delay change order.

Progress:

Oct - Dec 2018

- (1) Completed 25th Ave bridge abutments and center bent.
- (2) Completed PG&E 24" gas line relocation work.
- (3) Completed PG&E electrical relocation work.
- (4) Approved CCO-40 project wide delay change order.
- (5) Continued 28th Ave bridge strip abutments.
- (6) Continued TPFOC & PTC relocation work.
- (7) Began MSE wall installation north of 25th Avenue.

Future

Activities:

Jan - Mar 2019

- (1) Open all lanes of 25th Avenue for traffic.
- (2) Complete TPFOC & PTC relocation work pulling innerducts.
- (3) Continue 28th Ave bridge strip abutments and electrical room.
- (4) Continue MSE wall installation north of 25th Avenue.
- (5) Begin AT&T communication relocation work.
- (6) Begin MSE wall south of 25th Avenue.

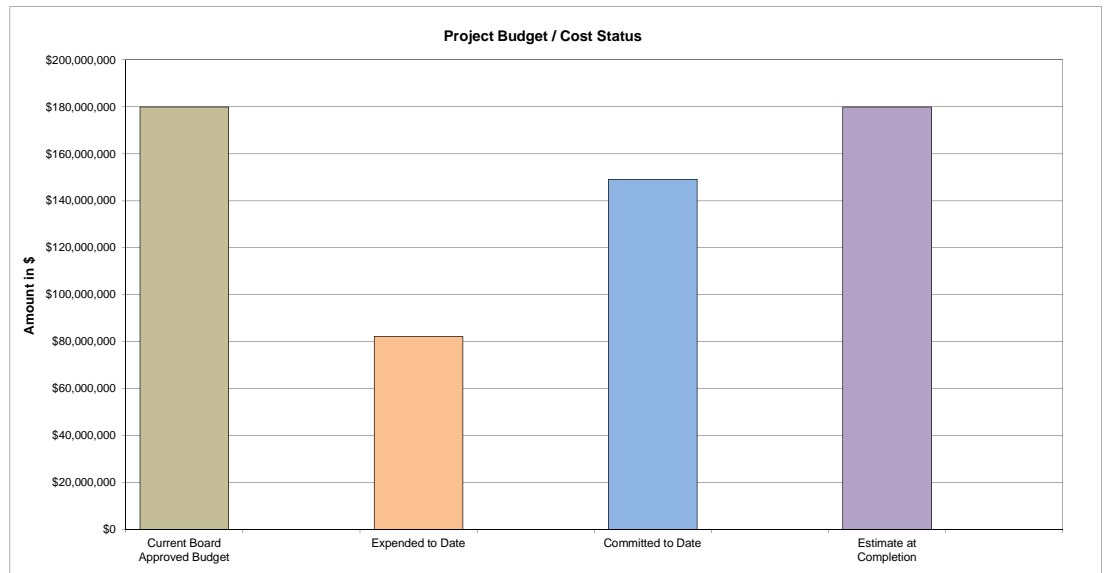
Issues:

It is anticipated that the project will be delayed due to the TPFOC relocation.

25th AVENUE GRADE SEPARATION PROJECT

BUDGET:

	(a)	(b)	(c)	(d)	(e) = (a - d)
	Current Board Approved Budget	Expended to Date	Committed to Date	Estimate at Completion	Variance at Completion
Total Project	\$180,000,000	\$82,225,595	\$149,172,925	\$180,000,000	\$0



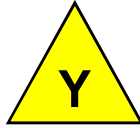
Issues: None.

SAFETY:

One incidents was reported this quarter.

- 1) Minor head injury.

BURLINGAME BROADWAY GRADE SEPARATION PROJECT (Preliminary Design/Environmental Clearance)

SCOPE**SCHEDULE****BUDGET/COST****SAFETY****SCOPE:**

This project will grade separate the Broadway railroad crossing in the City of Burlingame by partially elevating the rail and partially depressing the roadway. The elevated rail alignment will require the reconstruction of the Broadway Caltrain Station. Reconstruction of the Broadway Caltrain Station will remove the operational requirement of the hold-out rule.

The current scope for this project specifically is to complete the 35% preliminary design and obtain CEQA and NEPA environmental clearance needed to grade separate the Broadway at-grade crossing as described above.

Issues:

None.

SCHEDULE:

Activity ID	Activity Description	Start	Finish	2018					2019			
				Q4	Q1	Q2	Q3	Q4	Q1	Q2	Q3	Q4
100244 - Burlingame Broadway Gra...		18-Dec-17 A	31-Dec-19									
Preliminary Engineering		18-Dec-17 A	31-Dec-19									

Progress:

- Oct - Dec 2018
- (1) Continued meeting with stakeholders.
 - (2) Continued technical studies for environmental clearances.
 - (3) Reviewed 15% design submittal.
 - (4) Continued coordination with Electrification project regarding redesign of substation.
 - (5) Performed archaeological borings.

Future**Activities:**

- Jan - Mar 2019
- (1) Continue meeting with stakeholders.
 - (2) Continue technical studies for environmental clearances.
 - (3) Continue review of 15% design submittal.
 - (4) Continue coordination with Electrification project regarding redesign of substation.
 - (5) Analyze archaeological borings.

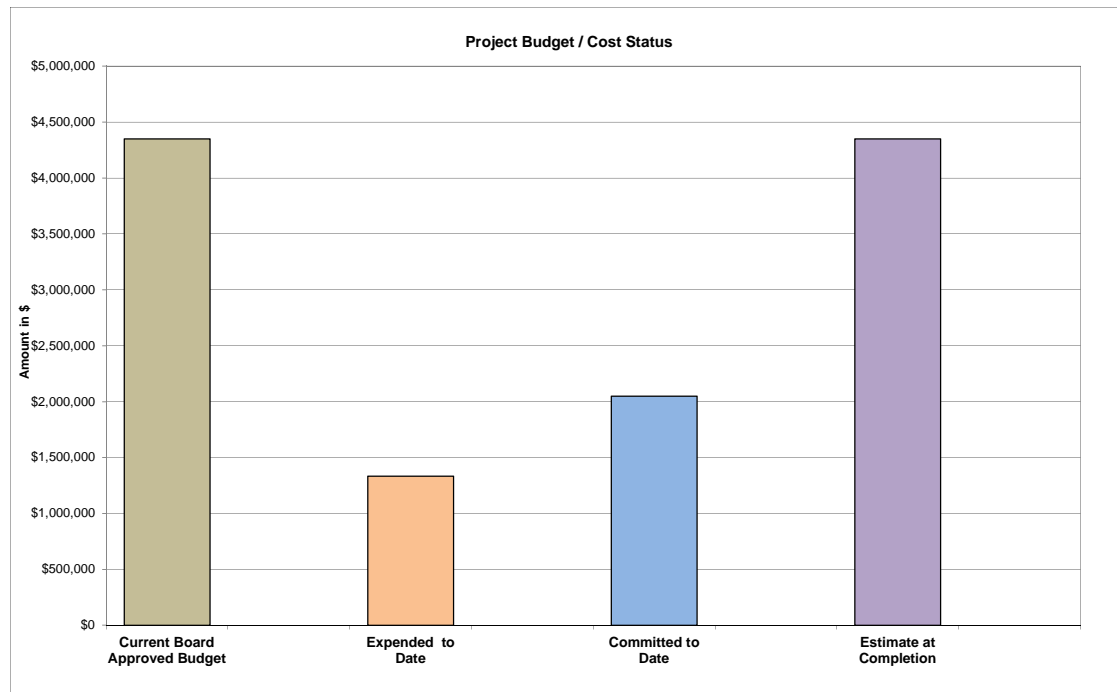
Issues:

- Preliminary Design and Environmental clearance schedule has been extended due to delays in:
- (1) Receiving the City of Burlingame 15% design review comments.
 - (2) City of Burlingame's request for additional studies.
 - (3) Executing the design work directive to continue contract work.

BURLINGAME BROADWAY GRADE SEPARATION PROJECT
(Preliminary Design/Environmental Clearance)

BUDGET:

	(a)	(b)	(c)	(d)	(e) = (a - d)
	Current Board Approved Budget	Expended to Date	Committed to Date	Estimate at Completion	Variance at Completion
Total Project	\$4,350,000	\$1,334,336	\$2,047,835	\$4,350,000	\$0



Issues: None.

SAFETY:

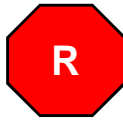
No incidents reported this quarter.

F-40 LOCOMOTIVE MID-LIFE OVERHAUL PROJECT

SCOPE



SCHEDULE



BUDGET/COST



SAFETY



SCOPE:



This project will perform mid-life overhaul of three F40PH2C locomotives. The mid-life overhaul of the locomotives shall include complete disassembly of the main diesel engine, overhauling by reconditioning re-usable main frame components and re-assembly with new engine components and replacement of the Separate Head-End Power (SEP-HEP) unit and all electrical components of the SEP-HEP compartment. All areas of the locomotive carbody, trucks, wheels and electrical components shall be reconditioned to like-new condition or replaced with new material. The work shall be completed off-site at contractor's (Motive Power) facility location at Boise, Idaho. Project also includes onsite inspection and contract management by JPB's vehicle consultant. Final acceptance of the completed locomotive overhaul will be conducted at the JPB's CEMOF facility in San Jose. The three locomotives are:

1. Locomotive # 920
2. Locomotive # 921
3. Locomotive # 922

Issues:

None.

SCHEDULE:



Activity ID	Activity Description	Start	Finish	2017			2018				2019			
				Q2	Q3	Q4	Q1	Q2	Q3	Q4	Q1	Q2	Q3	Q4
100005 - F-40 Mid-Life Overhaul		31-Mar-17 A	31-Dec-19											
Technical Specs		31-Mar-17 A	31-Mar-17 A											
Bid and Award		01-Apr-17 A	02-Oct-17 A											
Construction		03-Oct-17 A	30-Sep-19											
Project Close Out		01-Oct-19	31-Dec-19											

Progress:

Oct - Dec 2018

- (1) Continued the overhaul of locomotive #920, delivered to Motive Power's facility plant in February 2018.
- (2) Continued the overhaul of locomotive #921, delivered to Motive Power's facility plant in March 2018.

Future

Activities:

Jan - Mar 2019

- (1) Continue the overhaul of locomotive #920. Return and final acceptance is expected in the Spring of 2019.
- (2) Continue the overhaul of locomotive #921. Return and final acceptance is expected in the Spring of 2019.
- (3) Locomotive #922 is expected to be shipped to contractor's facility after locomotive #920 overhaul is complete. Return and final acceptance is expected in September 2019.

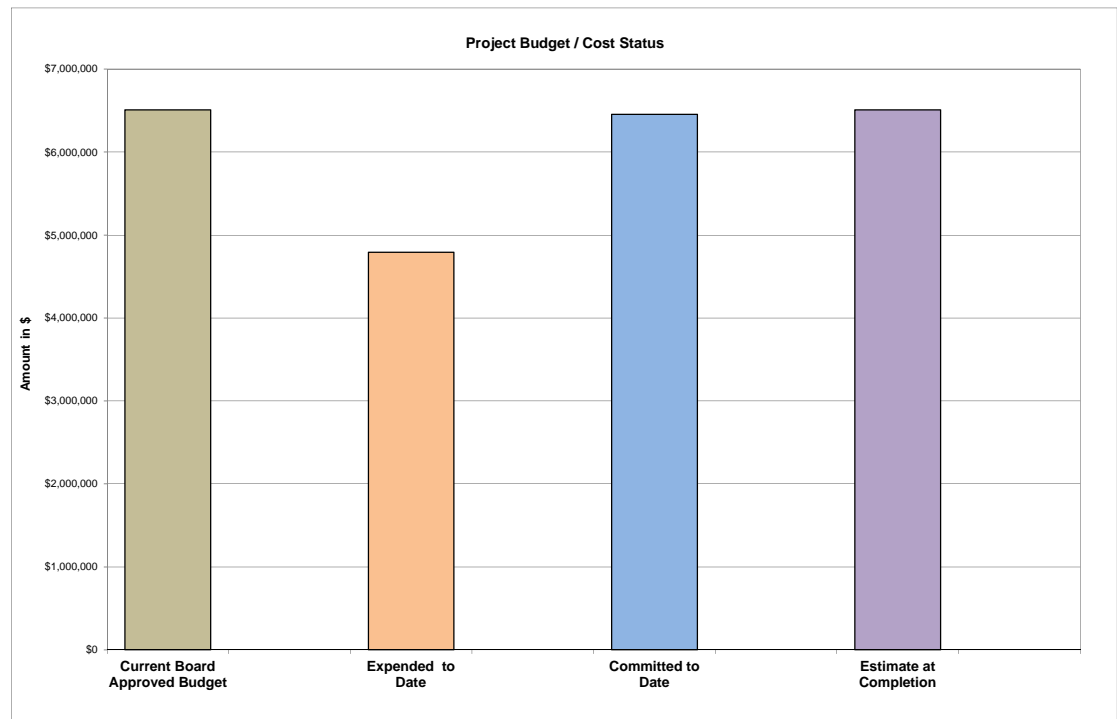
Issues:

Schedule delay is due to:

- (1) Additional parts needing to be replaced that were not part of the original overhaul scope.
- (2) Resource constraints facing the contractor in hiring qualified workers to perform the locomotive overhauls.

F-40 LOCOMOTIVE MID-LIFE OVERHAUL PROJECT**BUDGET:**

	(a)	(b)	(c)	(d)	(e) = (a - d)
	Current Board Approved Budget	Expended to Date	Committed to Date	Estimate at Completion	Variance at Completion
Total Project	\$6,510,000	\$4,792,314	\$6,455,836	\$6,510,000	\$0



Issues: None.

SAFETY:

No incidents reported this quarter.

GRADE CROSSING IMPROVEMENT PROJECT – FY2016

SCOPE



SCHEDULE



BUDGET/COST



SAFETY

**SCOPE:**

This project is the continuation of the Caltrain Grade Crossing Improvement Program. It will take the conceptual design of the following top 10 (out of 42) highest priority crossings identified in the Caltrain Grade Crossing Hazard Analysis Report and advance them to final design. The ten grade crossings were chosen because they had an average daily traffic count of 12,000 vehicles or more, which is considered high usage. Work items included are the installation of signals, fences, gates, curbs, lighting and signs. The existing grade crossing warning devices will be retrofitted to meet the latest California Public Utilities Commission standards.

The ten grade crossing are:

1. Broadway (Burlingame)
2. Mary Avenue (Sunnyvale)
3. Ravenswood Avenue (Menlo Park)
4. Rengstorff Avenue (Mountain View)
5. Charleston Road (Palo Alto)
6. Castro Street (Mountain View)
7. Peninsula Avenue (Burlingame)
8. Alma Street (Palo Alto)
9. 16th Street (San Francisco)
10. 4th Street (San Mateo)

Issues:

Grade Crossing Improvement FY2016 construction contract has been combined with Santa Clara County Grade Crossing Medians Project for administrative efficiency.

SCHEDULE:

Activity ID	Activity Description	Start	Finish	2016				2017				2018				2019	
				Q3	Q4	Q1	Q2	Q3	Q4	Q1	Q2	Q3	Q4	Q1	Q2	Q3	Q4
100002 - FY2016 Grade Crossing Im...		01-Sep-15 A	31-May-19														
Final Design		01-Sep-15 A	31-Oct-16 A														
Bid and Award		01-Nov-16 A	31-Jan-18 A														
Construction		01-Feb-18 A	28-Feb-19														
Project Close Out		01-Mar-19	31-May-19														

Progress:

Oct - Dec 2018

- (1) Completed the work at Mary Ave. grade crossing.
- (2) Completed the work at the 16th St. grade crossing.
- (3) Completed the work at the Rengstorff grade crossing.
- (4) Completed the work at the Castro grade crossing.
- (5) Performed punch list items.

Future**Activities:**

Jan - Mar 2019

- (1) Complete the punch list work.
- (2) Begin project close out.

Issues:

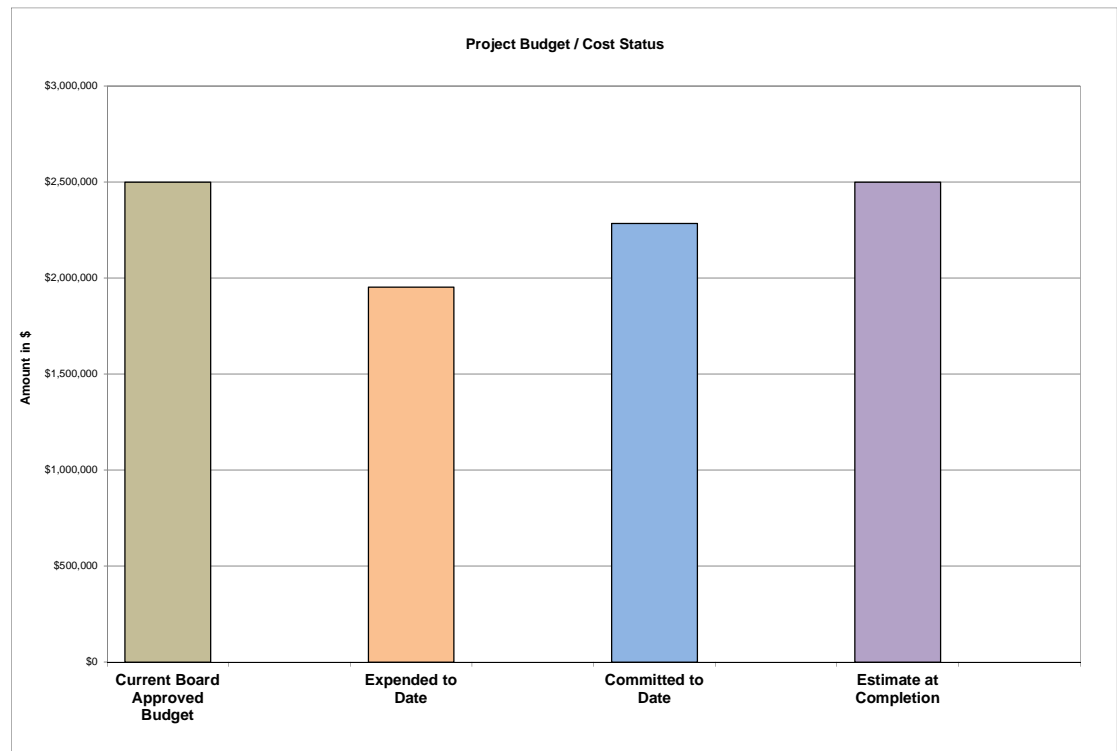
None.

GRADE CROSSING IMPROVEMENT PROJECT – FY2016

BUDGET:



	(a)	(b)	(c)	(d)	(e) = (a - d)
	Current Board Approved Budget	Expended to Date	Committed to Date	Estimate at Completion	Variance at Completion
Total Project	\$2,499,000	\$1,953,238	\$2,284,327	\$2,499,000	\$0



Issues: None.

SAFETY:



No incidents reported this quarter.

GRADE CROSSING IMPROVEMENTS IN REDWOOD CITY PROJECT

SCOPE



SCHEDULE



BUDGET/COST



SAFETY



SCOPE:



This project will make improvements to three grade crossings (Whipple Ave, Main St. and Broadway) in Redwood City according to the scope defined in the CPUC Section 130 program. The grade crossing improvements will cover railroad, traffic, and roadway safety systems. The design components at each grade crossing include but are not limited to the following:

- Replacing vehicle gate arms.
- Channelized pedestrian crossing with fencing & rails.
- Improve sidewalk markings.
- Improve pavement markings (striping, stop bars, etc.).
- Install standalone pedestrian gates.
- Upgrade traffic signal interconnects.

Issues:

None.

SCHEDULE:



Activity ID	Activity Description	Start	Finish	2016				2017				2018				
				Q1	Q2	Q3	Q4	Q1	Q2	Q3	Q4	Q1	Q2	Q3	Q4	
100056 - Grade Crossing Improvem...		01-Feb-16 A	28-Feb-19													
Engineering Design		01-Feb-16 A	30-Nov-16 A													
Bid and Award		01-Dec-16 A	31-Oct-17 A													
Construction		01-Nov-17 A	31-Oct-18 A													
Project Close Out		01-Nov-18 A	28-Feb-19													

Progress:

Oct - Dec 2018

- (1) Completed contrctution.
- (2) Continued to wait for Redwood City to install the traffic signal preemption cable at Broadway.

Future

Activities:

Jan - Mar 2019

- (1) Continue to wait for Redwood City to install the traffic signal preemption cable at Broadway.
- (2) Complete project close out.

Issues:

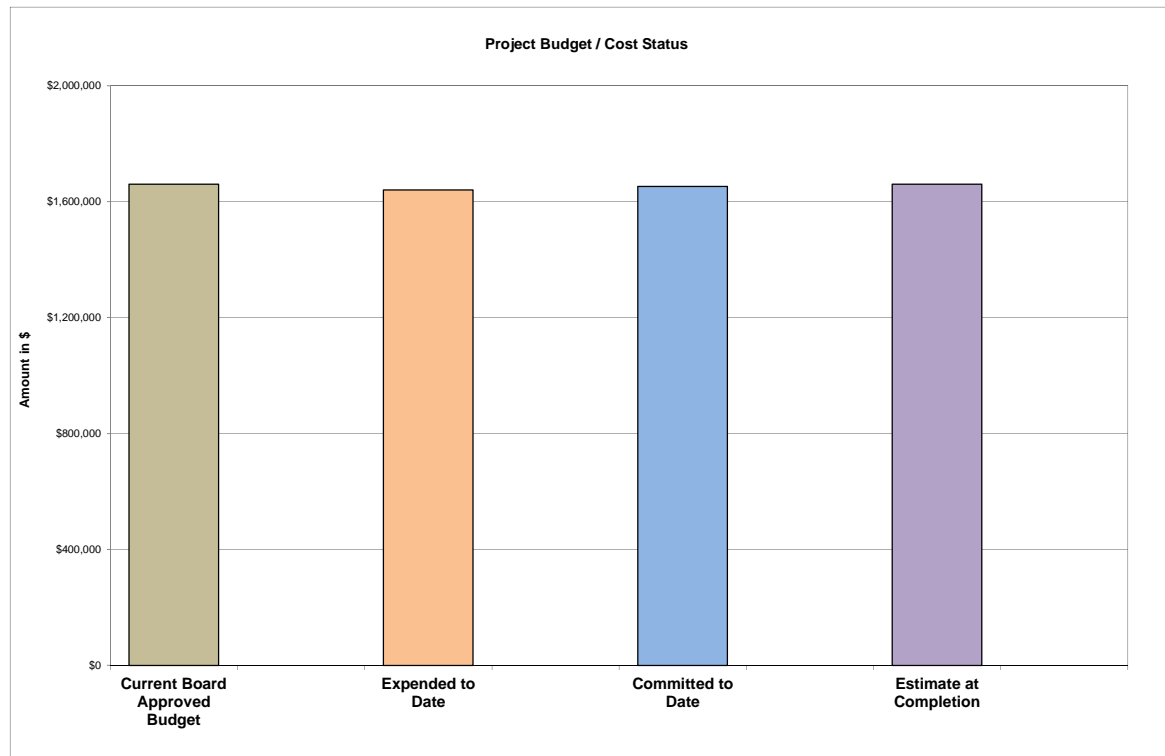
The City of Redwood City has not installed the traffic signal preemption cable at Broadway. This must be done before PCJPB connects the cable to the Caltrain signal house and test it. Schedule delay is because of this dependency. This final Caltrain work will completed by TASI.

GRADE CROSSING IMPROVEMENTS IN REDWOOD CITY PROJECT

BUDGET:



	(a)	(b)	(c)	(d)	(e) = (a - d)
	Current Board Approved Budget	Expended to Date	Committed to Date	Estimate at Completion	Variance at Completion
Total Project	\$1,660,500	\$1,640,598	\$1,652,685	\$1,660,500	\$0

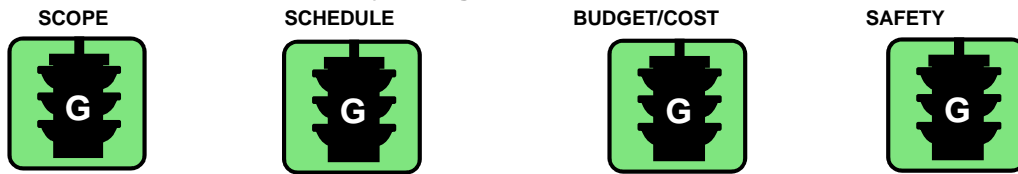


Issues: None.



No incidents reported this quarter.

GUADALUPE RIVER BRIDGES REPLACEMENT AND EXTENSION PROJECT (Preliminary Design/Environmental Clearance)

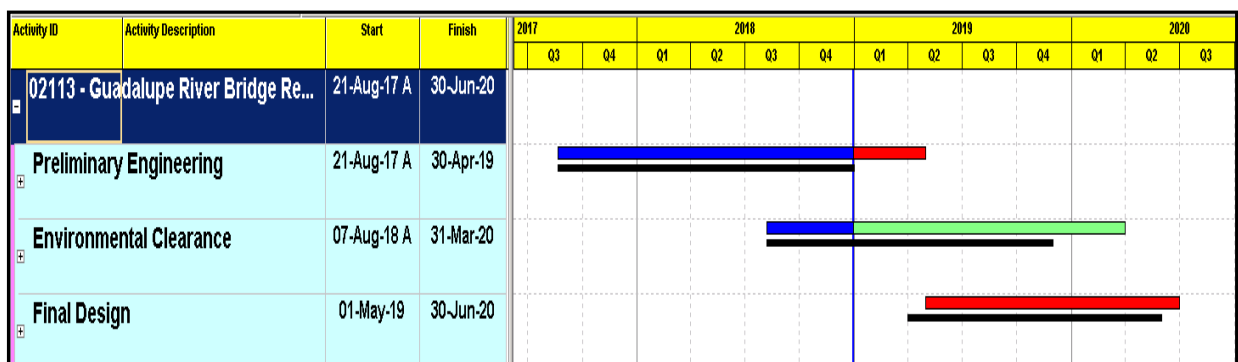
**SCOPE:**

Total project scope includes:

- (1) Replacement of MT1 bridge and extension of MT1 and MT2 and widening the channel to address geomorphic issues and scour.
- (2) Coordination with the US Army Corps of Engineers (USACE) and the Santa Clara Valley Water District (SCVWD) regarding their flood control project.
- (3) Prepare Preliminary and Final Design.
- (4) Obtain CEQA and NEPA environmental clearance and permits.
- (5) Construct MT1 bridge, extension of MT1 and MT2 bridges, and widening the river channel.

Issues:

The project scope has been revised this quarter per FTA comments.

SCHEDULE:**Progress:**

Oct - Dec 2018

- (1) Continued meeting with stakeholders.
- (2) Continued preparing 35% design submittal.
- (3) Continued coordination for third party fiber relocation.
- (4) Continued data collection/fieldwork for biological resources evaluation, wetlands and water delineation, cultural resources, and hazmat existing conditions.
- (5) Continued preparing environmental scoping memo.
- (6) Prepared for geotechnical investigation.
- (7) Performed borings for geotechnical investigation.

Future**Activities:**

Jan - Mar 2019

- (1) Continue meeting with Stakeholders.
- (2) Continue preparing 35% design submittal.
- (3) Continue coordination for third party fiber relocation.
- (4) Continue data collection/fieldwork for biological resources evaluation, wetlands and water delineation, cultural resources, and hazmat existing conditions.
- (5) Continue preparing environmental scoping memo.

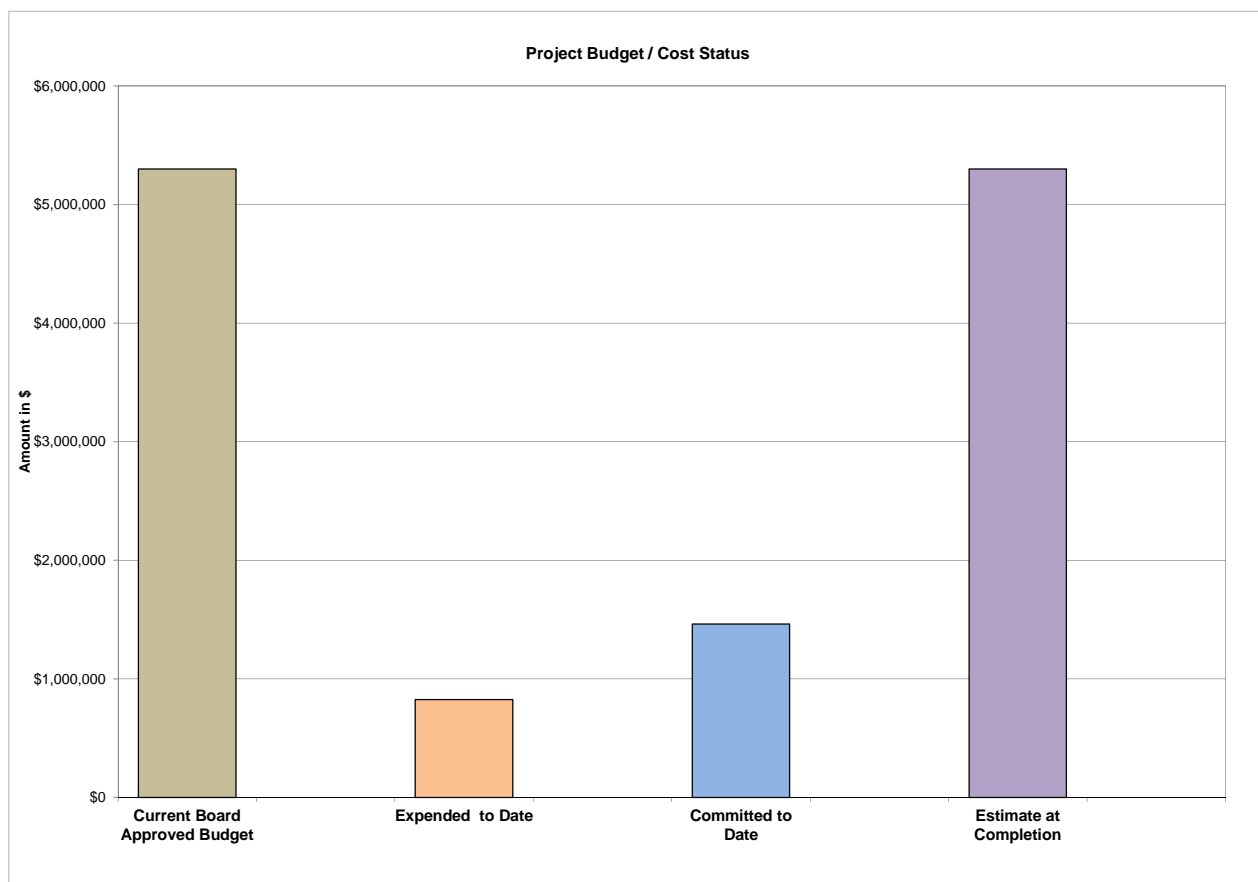
Issues:

Due to lack of funding contribution from SCVWD/USACE and NEPA clearance through FTA, Caltrain's project has been revised to address current geomorphic and scour issues. Project will consider measures to not preclude the future widening by SCVWD/USACE. The 35% design will be revised accordingly and will be based on additional hydraulic analysis.

GUADALUPE RIVER BRIDGES REPLACEMENT AND EXTENSION PROJECT (Preliminary Design/Environmental Clearance)

BUDGET:

	(a)	(b)	(c)	(d)	(e) = (a - d)
	Current Board Approved Budget	Expended to Date	Committed to Date	Estimate at Completion	Variance at Completion
Total Project	\$5,300,000	\$827,002	\$1,461,553	\$5,300,000	\$0



Issues: None.

SAFETY:

No incidents reported this quarter.

MARIN STREET AND NAPOLEON AVENUE BRIDGE CLOSURE PROJECT

SCOPE



SCHEDULE



BUDGET/COST



SAFETY



SCOPE:



Marin Street and Napoleon Avenue bridges are located at MP 2.35 and MP 2.45 respectively in the City and County of San Francisco.

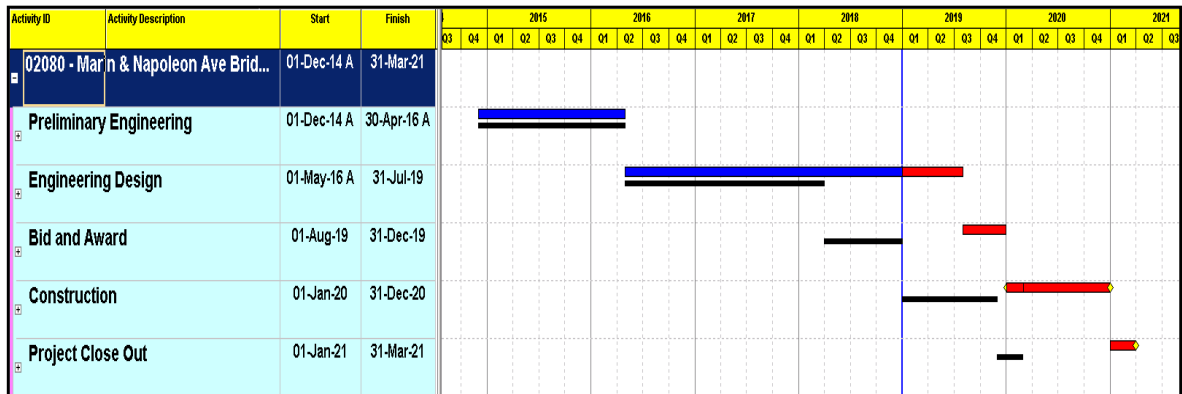
Project Scope is for:

- (1) Marin Street Bridge - Improve safety and security, maintain the bridge at a state of good repair, and improve worker safety.
- (2) Napoleon Street Bridge - improve safety and security, minimize future maintenance repairs, and replace deficient bridge components by removing the 4 short bridge spans not located over box culvert and replace with earth berm, replacing the main center steel bridge with precast concrete girders and adding new wing walls.
- (3) Additional trackwork to replace the rail on MT1 and MT2 from approximate MP 2.10 to MP 2.63.

Issues:

None.

SCHEDULE:



Progress:

Oct - Dec 2018

- (1) Continued out-reach to impacted stakeholders such as city and county of San Francisco and Caltrans regarding project.
- (2) Continued developing division 01 specifications.
- (3) Continued addressing stakeholder's design comments.
- (4) Drafted trackwork improvements for the project scope.
- (5) Prepared the constructability review.

Future

Activities:

Jan - Mar 2019

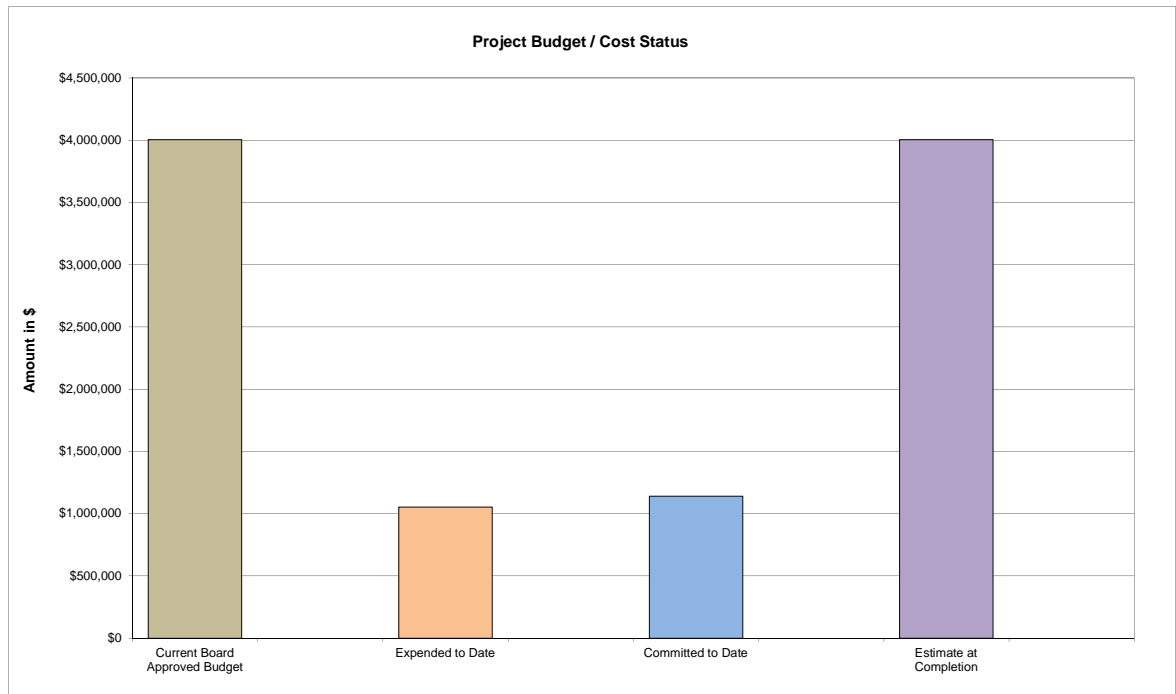
- (1) Continue out-reach to impacted stakeholders such as city and county of San Francisco and Caltrans regarding project.
- (2) Continue developing division 01 specifications.
- (3) Continue addressing stakeholder's design comments.
- (4) Continue analyzing constructability review.
- (5) Continue to incorporate trackwork improvements into the project scope.

Issues:

- (1) Project schedule has been extended to include additional scope to improve the trackwork adjacent to the project area as requested by JPB Engineering and to avoid conflicts with the Electrification Tunnel Modification project.
- (2) Constructability review will need to be coordinated.
- (3) Schedule will be rebaselined when we approve contractor's baseline schedule.

MARIN STREET AND NAPOLEON AVENUE BRIDGE CLOSURE PROJECT**BUDGET:**

	(a)	(b)	(c)	(d)	(e) = (a - d)
	Current Board Approved Budget	Expended to Date	Committed to Date	Estimate at Completion	Variance at Completion
Total Project	\$4,004,000	\$1,052,311	\$1,139,311	\$4,004,000	\$0



Issues: The constructability review is included in the current budget.

SAFETY:

No incidents reported this quarter.

MARY AVENUE TRAFFIC SIGNAL PREEMPTION PROJECT

SCOPE



SCHEDULE



BUDGET/COST



SAFETY



SCOPE:



Caltrain will install an advance signal preemption system at the Mary Avenue grade crossing to provide additional time for the City's traffic signals at Mary Avenue and Evelyn Avenue to respond to allow Caltrain to pass through.

Issues:

None.

SCHEDULE:



Activity ID	Activity Description	Start	Finish	2018				2019				2020				2021
				Q1	Q2	Q3	Q4	Q1	Q2	Q3	Q4	Q1	Q2	Q3	Q4	
100278 - Mary Avenue Traffic Signal		01-Feb-18 A	31-Mar-21													
	Final Design	01-Feb-18 A	30-Sep-19													
	Bid and Award	30-Sep-19	31-Mar-20													
	Construction	31-Mar-20	31-Dec-20													
	Project Close Out	01-Jan-21	31-Mar-21													

Progress:

Oct - Dec 2018 (1) Issued a Work Directive to RSE for the advance signal preemption design.

Future

Activities:

Jan - Mar 2019 (1) Hold a kick off meeting with RSE.
(2) RSE to begin advance signal preemption design.

Issues:

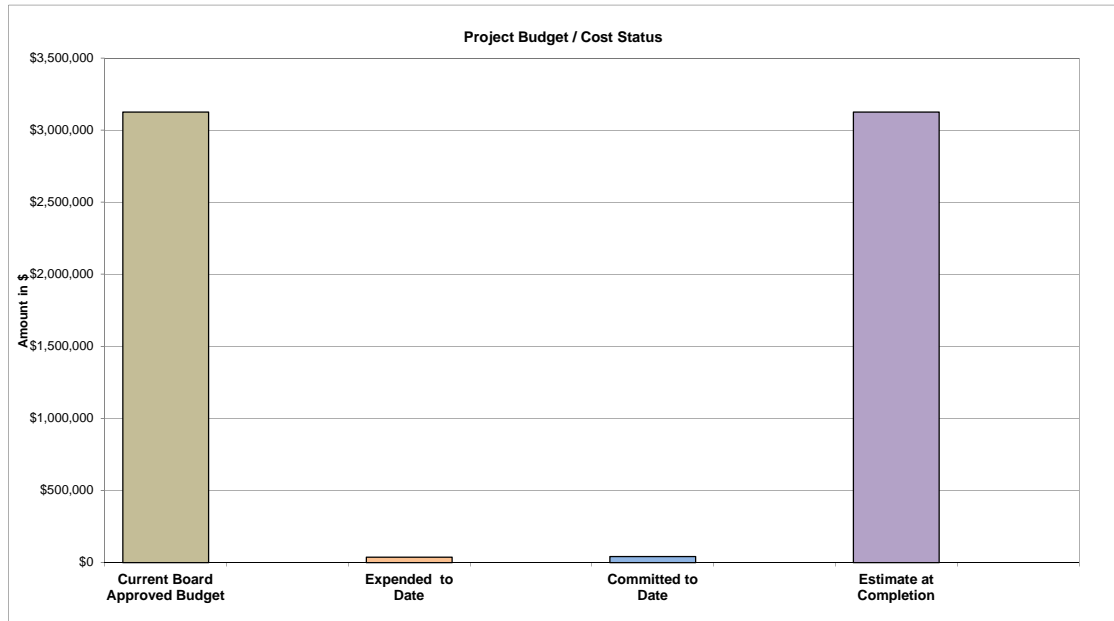
None.

MARY AVENUE TRAFFIC SIGNAL PREEMPTION PROJECT

BUDGET:



	(a)	(b)	(c)	(d)	(e) = (a - d)
	Current Board Approved Budget	Expended to Date	Committed to Date	Estimate at Completion	Variance at Completion
Total Project	\$3,125,000	\$36,332	\$40,275	\$3,125,000	\$0



Issues: None.

SAFETY:



No incidents reported this quarter.

MP-36 LOCOMOTIVE MID-LIFE OVERHAUL PROJECT

SCOPE



SCHEDULE



BUDGET/COST



SAFETY

**SCOPE:**

This project will perform mid-life overhaul of six MP-36-3C Locomotives. The mid-life overhaul of the locomotives shall include complete disassembly of the main diesel engine, overhauling by reconditioning re-usable main frame components and re-assembly with new engine components and the replacement of the Separate Head-End Power (SEP-HEP) unit and all electrical components of the SEP-HEP compartment. All areas of the locomotive carbody, trucks, wheels and electrical components shall be reconditioned to like-new condition or replaced with new material. The project work shall be completed off-site at the contractor's facility location. Project also includes onsite inspection and contract management by JPB's vehicle consultant. Final acceptance of the completed locomotive overhaul will be conducted at the JPB's CEMOF facility in San Jose. The six locomotives are:

1. Locomotive # 923
2. Locomotive # 924
3. Locomotive # 925
4. Locomotive # 926
5. Locomotive # 927
6. Locomotive # 928

Issues:

Currently scope is for technical specification only.

SCHEDULE:

Activity ID	Activity Description	Start	Finish	2017				2018			
				Q2	Q3	Q4	Q1	Q2	Q3	Q4	
100218 - MP-36 Mid-Life Overhaul		01-Apr-17 A	02-Mar-18 A								
Technical Specs		01-Apr-17 A	28-Feb-18 A								
Bid and Award		01-Mar-18 A	02-Mar-18 A								

Progress:

Oct - Dec 2018 TBD.

Future**Activities:**

Jan - Mar 2019 TBD.

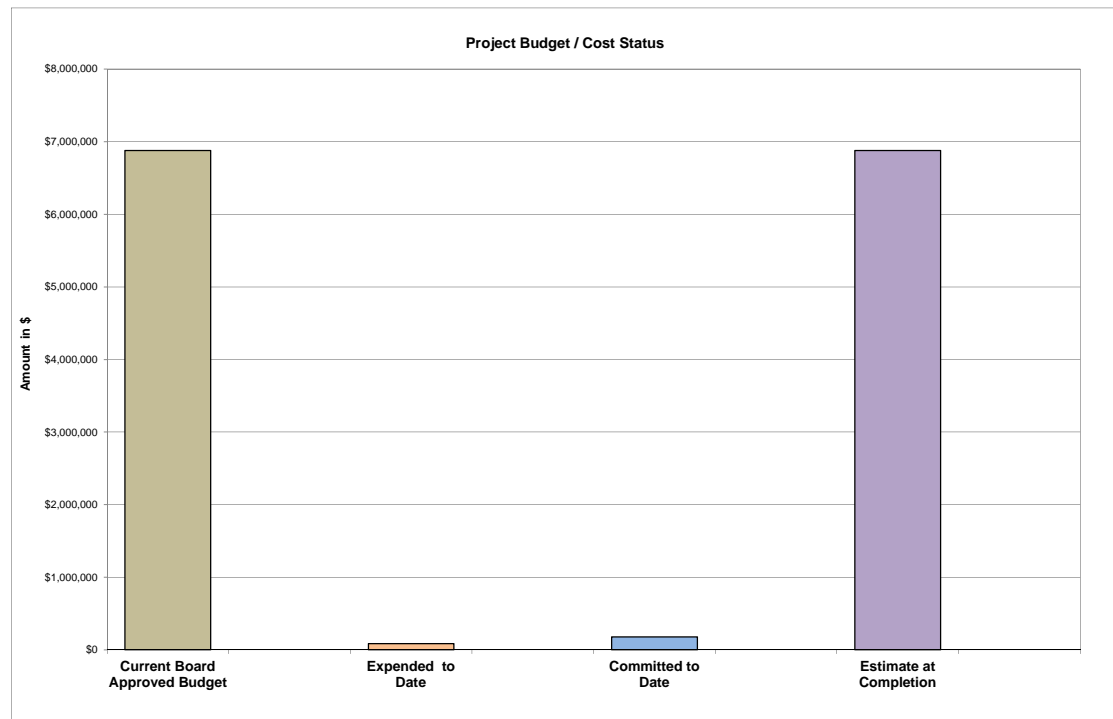
Note: Bids were rejected at the October 04, 2018 Board meeting. Schedule for re-solicitation is TBD.

Issues:

There is no re-solicitation date yet, the project schedule is under review and the schedule dates will be updated when a decision on how to move forward is made.

MP-36 LOCOMOTIVE MID-LIFE OVERHAUL PROJECT**BUDGET:**

	(a)	(b)	(c)	(d)	(e) = (a - d)
	Current Board Approved Budget	Expended to Date	Committed to Date	Estimate at Completion	Variance at Completion
Total Project	\$6,880,614	\$87,670	\$179,280	\$6,880,614	\$0



Issues: None.

SAFETY:

No incidents reported this quarter.

RAILROAD COMMUNICATION SYSTEM PROJECT - FY2017

SCOPE



SCHEDULE



BUDGET/COST



SAFETY



SCOPE: The State of Good Repair (SOGR) project consists the following tasks for maintenance of the Caltrain's Communication (COM) Systems.

Task 1: Improve radio coverage between Train Engineers and Maintenance of Way (MoW) Personnel.
Task 2: Provide support to manage configuration of communication software.

Issues: The current scope is for design only.

SCHEDULE:

Activity ID	Activity Description	Start	Finish	2018			2019			
				Q2	Q3	Q4	Q1	Q2	Q3	Q4
100147 - FY2017 Railroad Communi...		31-Mar-18 A	31-Dec-19							
Final Design		31-Mar-18 A	31-Mar-19							
Bid and Award		01-Apr-19	30-Sep-19							
Project Close Out		01-Oct-19	31-Dec-19							

Progress:

Oct - Dec 2018 (1) Completed award for design work.
(2) Began design work.

Future**Activities:**

Jan - Mar 2019 (1) Complete final design.

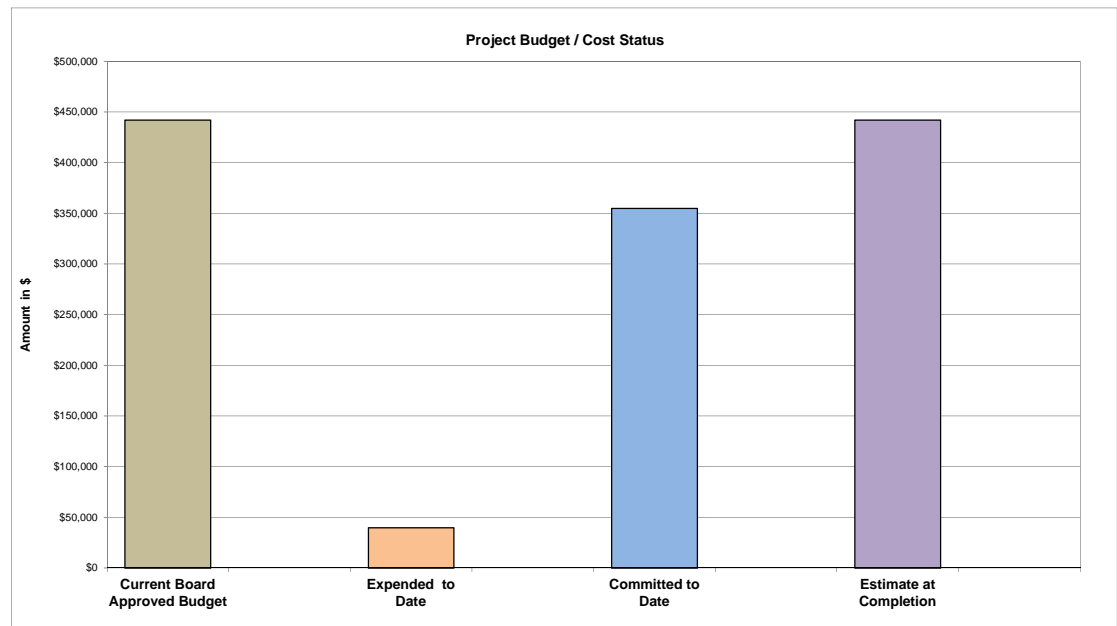
Issues: None.

RAILROAD COMMUNICATION SYSTEM PROJECT - FY2017

BUDGET:



	(a)	(b)	(c)	(d)	(e) = (a - d)
	Current Board Approved Budget	Expended to Date	Committed to Date	Estimate at Completion	Variance at Completion
Total Project	\$442,000	\$39,571	\$354,962	\$442,000	\$0



Issues: (1) Current funding is limited to design and bid and award phase only. Construction work will be performed under a different and separate project due to funding.

SAFETY:



No incidents reported this quarter.

RIGHT OF WAY FENCING PROJECT

SCOPE



SCHEDULE



BUDGET/COST



SAFETY



SCOPE:



This project is a part of the ongoing program to keep Caltrain's fencing in a State of Good Repair (SOGR). The goal of this project is to reduce trespassing on the Caltrain right of way by installing fence on at least one side of the property between San Francisco MP 0.2 to Lick MP 52.

Caltrain will install vandal resistant fencing at key locations along the main line rail corridor to deter trespassing. This work will include a base contract and three optional contracts which may be exercised with the General Manager's approval. These contracts includes site clearing, fence demolition, fence installation and vegetation removal.

Issues:

The current scope is for the base contract and option 1 only.

SCHEDULE:



Activity ID	Activity Description	Start	Finish	2016				2017				2018				2019		
				Q1	Q2	Q3	Q4	Q1	Q2	Q3	Q4	Q1	Q2	Q3	Q4	Q1	Q2	Q3
100053 - Right of Way Fencing Proje...		02-Jun-16 A	15-Jul-19															
Construction (Base)		02-Jun-16 A	31-Mar-18 A															
Construction (Option 1)		16-Apr-18 A	15-Apr-19															
Project Close Out		16-Apr-19	15-Jul-19															

Progress:

Oct - Dec 2018 (1) Continued option 1 fencing work.

Future

Activities:

Jan - Mar 2019 (1) Continue option 1 fencing work.

Issues:

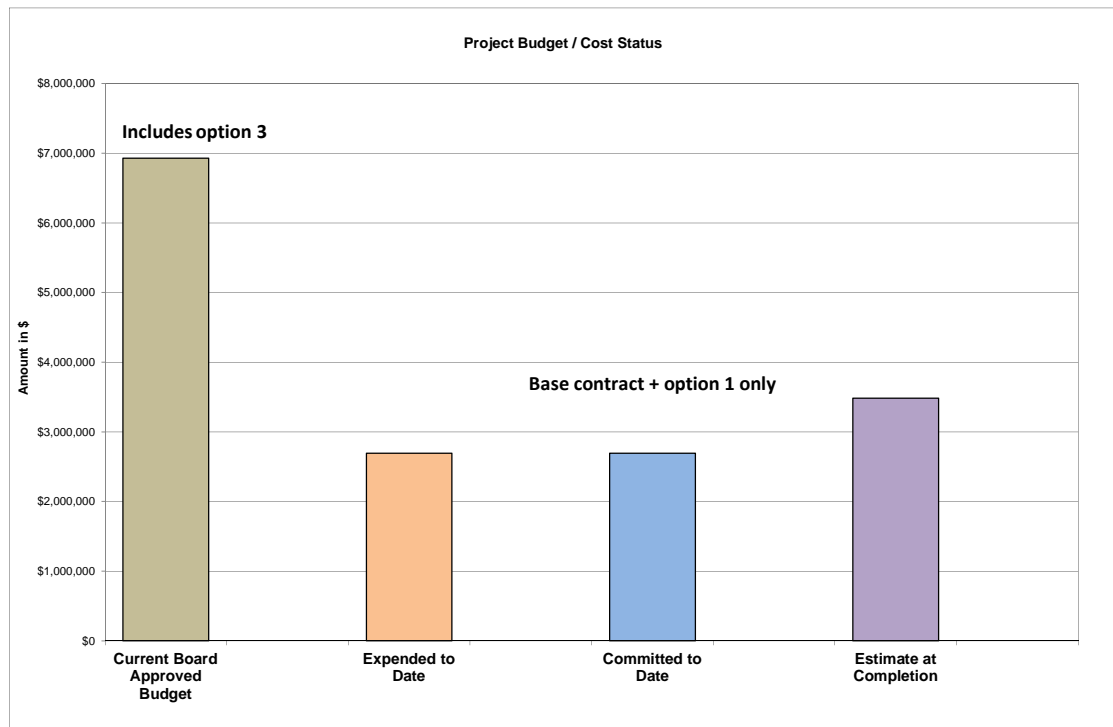
Schedule dates are for the base contract and option 1 only.

RIGHT OF WAY FENCING PROJECT

BUDGET:



	(a)	(b)	(c)	(d)	(e) = (a - d)
	Current Board Approved Budget	Expended to Date	Committed to Date	Estimate at Completion	Variance at Completion
Total Project	\$6,927,958	\$2,692,952	\$2,692,952	\$3,481,026	\$3,446,932



Issues: Current Board approved budget reflects total authorized budget through option 3. The committed and estimate at completion currently reflect the base contract and option 1. As the contract options are executed these values will be revised.

SAFETY:



No incidents reported this quarter.

SANTA CLARA COUNTY GRADE CROSSING MEDIANS PROJECT

**SCOPE:**

This project will install medians at five grade crossings in Santa Clara County (MP 31 to MP 49) including Churchill Avenue, East Meadow Avenue, Sunnyvale Avenue, Auzerias Avenue and Virginia Street.

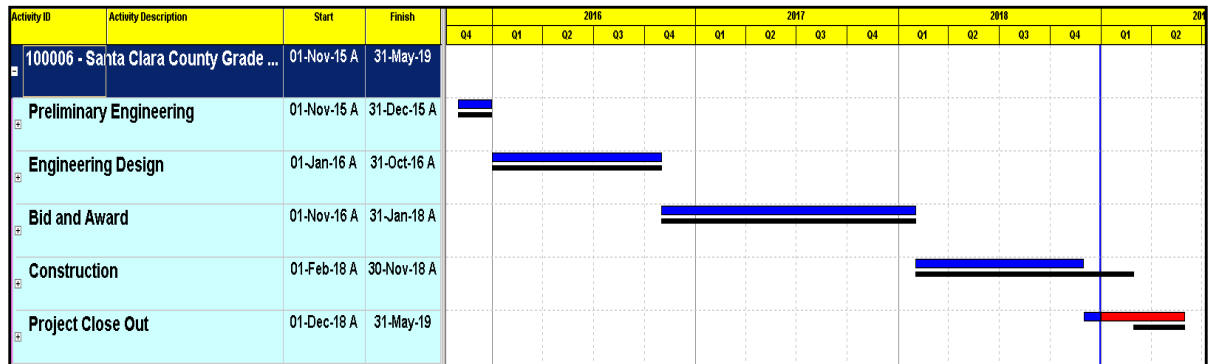
The project will be conducted in two phases:

PHASE I: will analyze the feasibility of installing medians (or other means to prevent vehicles from crossing the railroad tracks when the crossing gates are down) at the grade crossings identified above in Santa Clara County. Investigate items needed to install safety medians at the grade crossings.

PHASE II: will incorporate the recommendations of Phase I, refine the project schedule & estimate and develop associated construction documents for installation.

Issues:

Santa Clara County Grade Crossing Medians construction contract has been combined with Grade Crossing Improvement Project – FY2016 for administrative efficiency.

SCHEDULE:**Progress:**

Oct - Dec 2018

- (1) Completed the punch list items for the medians.
- (2) Began project close out.
- (3) Received final acceptance from the city of San Jose for the medians at W. Virginia and Auzerais.

Future**Activities:**

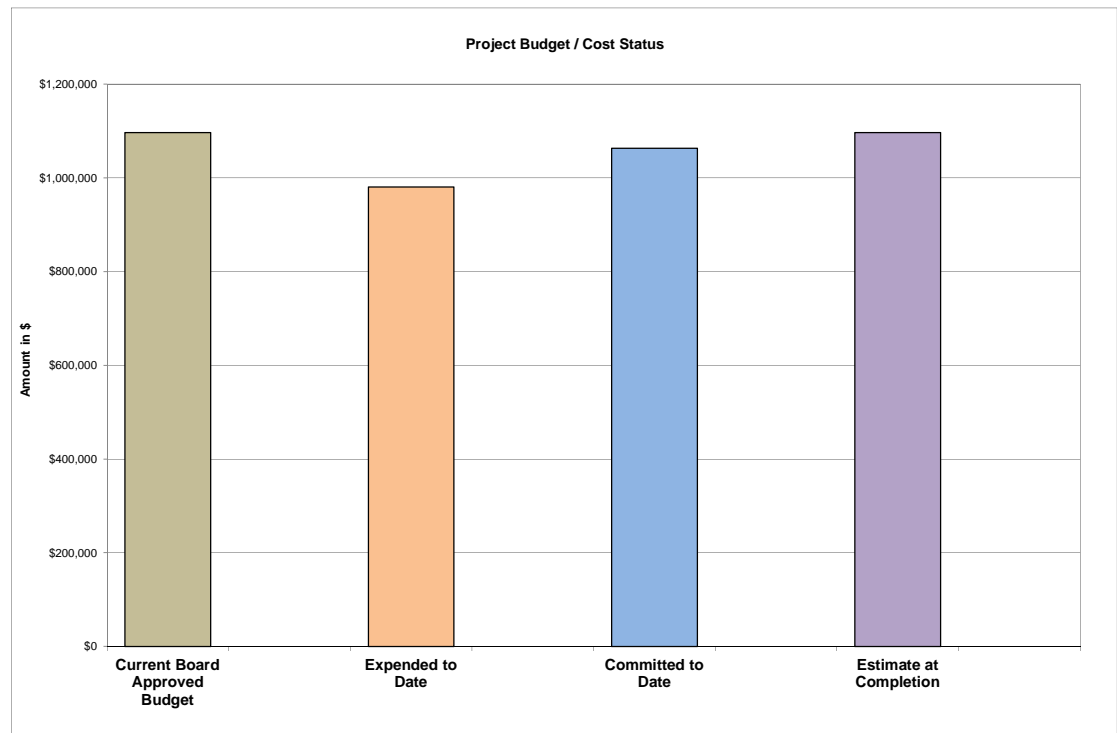
Jan - Mar 2019 (1) Continue project close out.

Issues:

Santa Clara County Grade Crossing Medians construction has been completed. Construction close out will begin once remaining FY2016 Grade Crossing Improvement Project construction work is completed.

SANTA CLARA COUNTY GRADE CROSSING MEDIANS PROJECT**BUDGET:**

	(a)	(b)	(c)	(d)	(e) = (a - d)
	Current Board Approved Budget	Expended to Date	Committed to Date	Estimate at Completion	Variance at Completion
Total Project	\$1,097,000	\$980,523	\$1,063,282	\$1,097,000	\$0

**Issues:** None.**SAFETY:**

No incidents reported this quarter.

SOUTH SAN FRANCISCO STATION IMPROVEMENT PROJECT

SCOPE



SCHEDULE



BUDGET/COST



SAFETY



SCOPE:



This project will replace the existing South San Francisco Station. The scope includes track work, signal work, a new 700 foot center board platform with new amenities, new shuttle drop-off, and connectivity to a new pedestrian underpass from the platform to Grand Avenue/Executive Drive. This project will improve safety by eliminating the hold out rule; in addition, the project provides connectivity along Grand Avenue for the City of South San Francisco (CSSF).

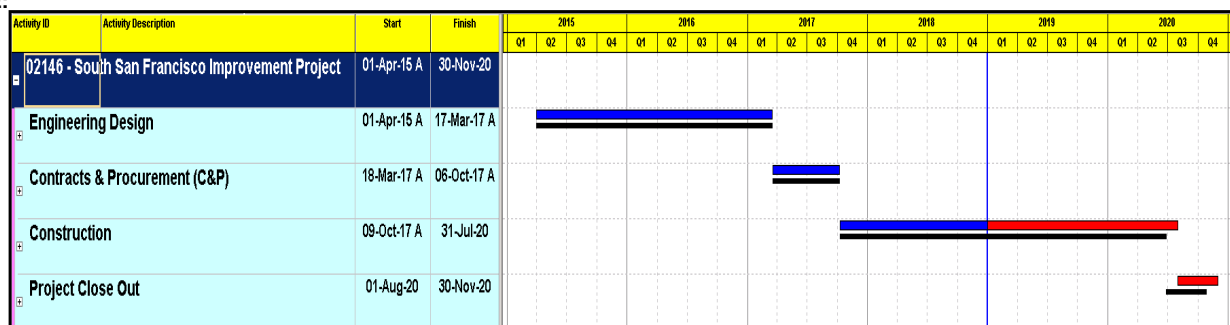
Key elements of the project include:

1. New center platform.
2. New at-grade pedestrian crossing at the north end of station.
3. New pedestrian underpass at the south end of the station.
4. New pedestrian plaza area at west and east end of the pedestrian underpass.
5. Inclusion of CSSF design modifications for the west and east plaza and ramps.
6. Funding of UPRR for replacement of tracks being removed as part of this project.

Issues:

None.

SCHEDULE:



Progress:

Oct - Dec 2018

- (1) Mobilized Third Party Utilities on-site to relocate utilities.
- (2) Began third party utilities relocation work.
- (3) Continued coordination with electrification on site access for TPSS construction.
- (4) Began construction of Parking Lot Retaining Wall
- (5) Began Street Improvement Work at Poletti Way
- (6) Continued coordination with Caltrain fiber relocation.
- (7) Provided shoring criteria for construction.

Future

Activities:

Jan - Mar 2019

- (1) Continue third party utilities on-site to relocate utilities.
- (2) Continued revision of OCS foundation layout per Electrification's request.
- (3) Continue coordination with electrification on site access for TPSS construction.
- (4) Continue construction of parking lot retaining wall.
- (5) Continue street improvement work at Poletti Way.

Issues:

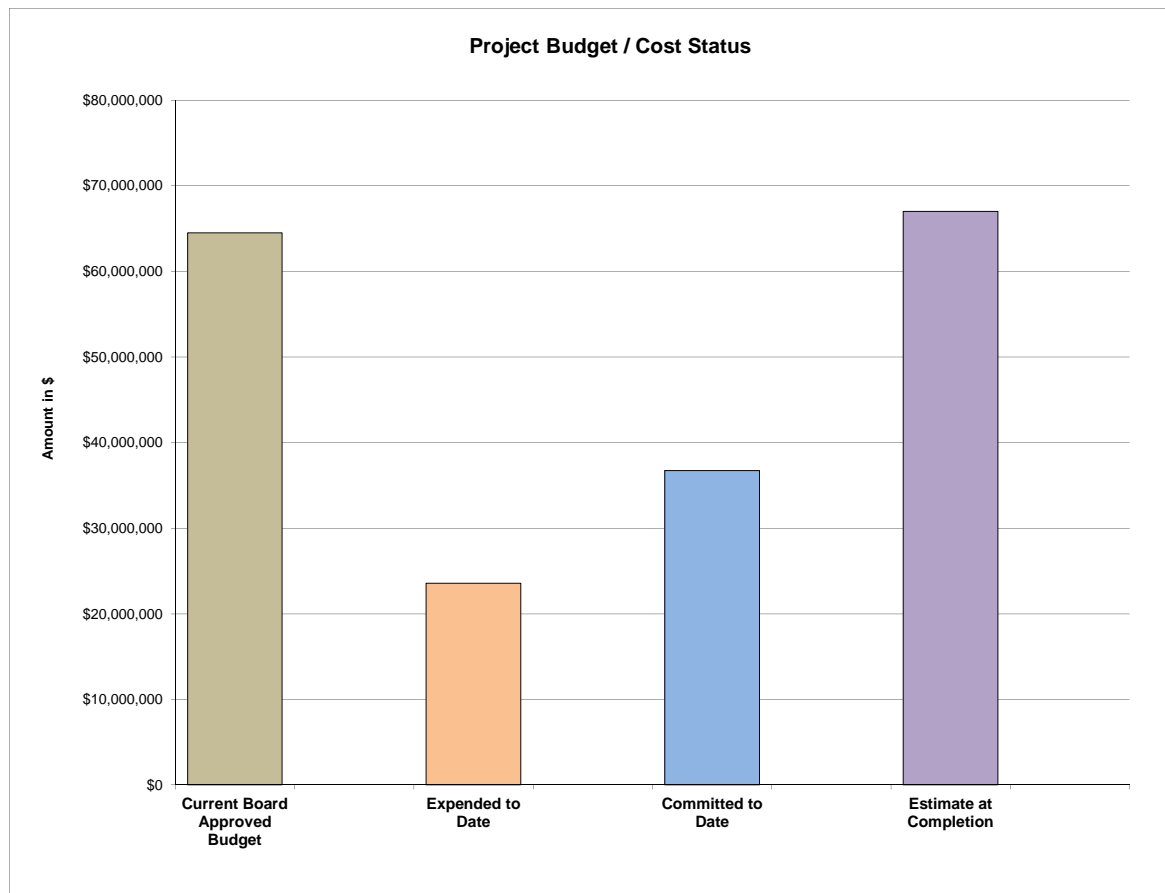
- (1) Project completion extended to July 2020 and OCS Foundation milestone extended to October 2019 due to construction suspension of critical path activities until April 2019 that was caused by delays in Caltrans permitting and its impact to commencement of 3rd party utility relocation.
- (2) Construction Change Order related to time extension has been approved. Project schedule has been re-baselined in this quarterly report.
- (3) It is anticipated that the project will be delayed due to the PG&E relocation.

SOUTH SAN FRANCISCO STATION IMPROVEMENT PROJECT

BUDGET:



	Current Board Approved Budget	Expended to Date	Committed to Date	Estimate at Completion	Variance at Completion
Project Total	\$64,500,000	\$23,580,116	\$36,741,212	\$67,000,000	(\$2,500,000)



Issues: The variances between the EAC and Current Budget is due to 3rd Party Utility Relocation costs being higher than originally estimated and due to delay costs associated the delays with the Caltrans permitting.

SAFETY: No incidents were reported this quarter.



SOUTH TERMINAL PHASE II PROJECT (Preliminary Design/Environmental Clearance)

SCOPE**SCHEDULE****BUDGET/COST****SAFETY****SCOPE:**

This project will include planning, design and construction of a 4th mainline track, new signal controls, and new cross overs and slip switches, between the south end of Centralized Equipment Maintenance and Operation Facility (CEMOF) and the north end of the South Terminal Diridon Station.

The purpose of this additional track is to increase corridor flexibility and capacity, increase reliability of service which will allow more frequent non-revenue operations between the South Terminal and CEMOF.

Issues:

- (1) Securing NEPA clearance. Almost two years have elapsed since CEQA was obtained.
- (2) Lack of project champion. Initially, this project was Operations sponsored. All personnel affiliated with this project from Operations are no longer working. No one from Operations is advocating for it currently.

SCHEDULE:

Activity ID	Activity Description	Start	Finish	2014				2015				2016				2017				2018			
				Q2	Q3	Q4	Q1	Q2	Q3	Q4	Q1	Q2	Q3	Q4	Q1	Q2	Q3	Q4	Q1	Q2	Q3	Q4	Q1
002055 - South Terminal Phase II		02-Feb-15 A	30-Nov-18 A																				
Preliminary Engineering		02-Feb-15 A	30-Nov-18 A																				

Progress:

- Oct - Dec 2018
- (1) FTA received concurrence from SHPO.
 - (2) Awaiting for NEPA clearance.

Future**Activities:**

- Jan - Mar 2019
- (1) Project to be closed out.

Note: This will be the last report for the project.

Issues:

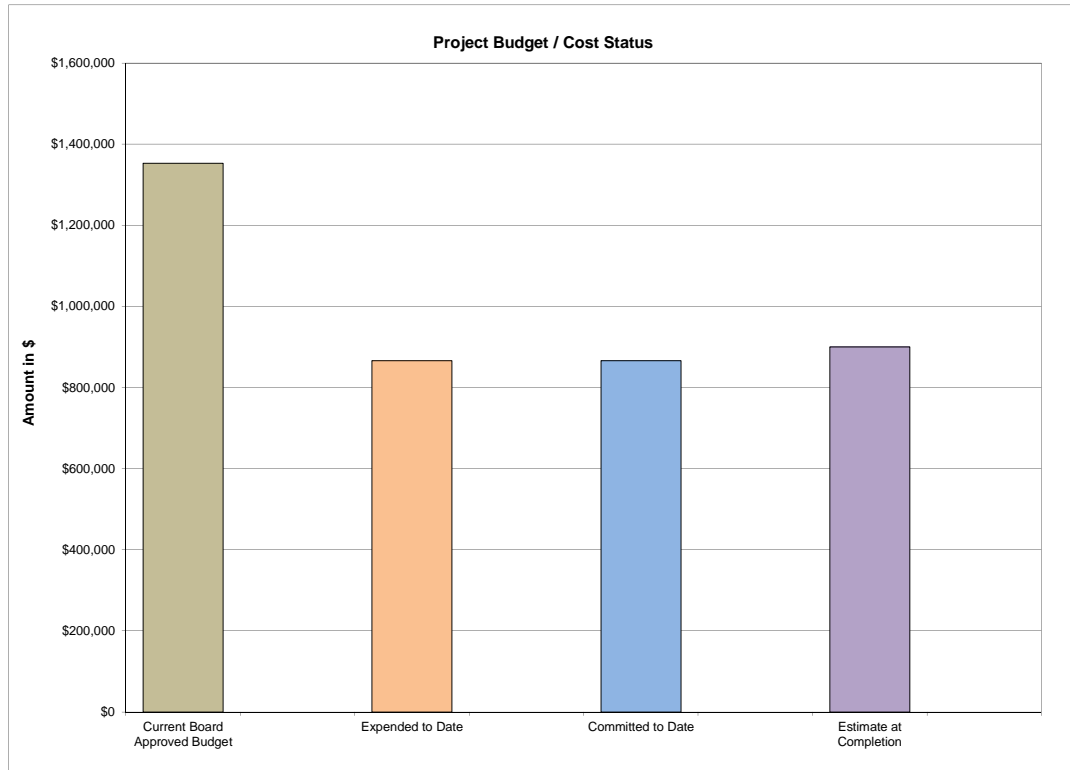
None.

SOUTH TERMINAL PHASE II PROJECT

(Preliminary Design/Environmental Clearance)

BUDGET:

	(a)	(b)	(c)	(d)	(e) = (a - d)
	Current Board Approved Budget	Expended to Date	Committed to Date	Estimate at Completion	Variance at Completion
Total Project	\$1,353,236	\$866,030	\$866,030	\$900,000	\$453,236



Issues: None.

SAFETY:

No incidents reported this quarter.

STATION ENHANCEMENT AND RENOVATION



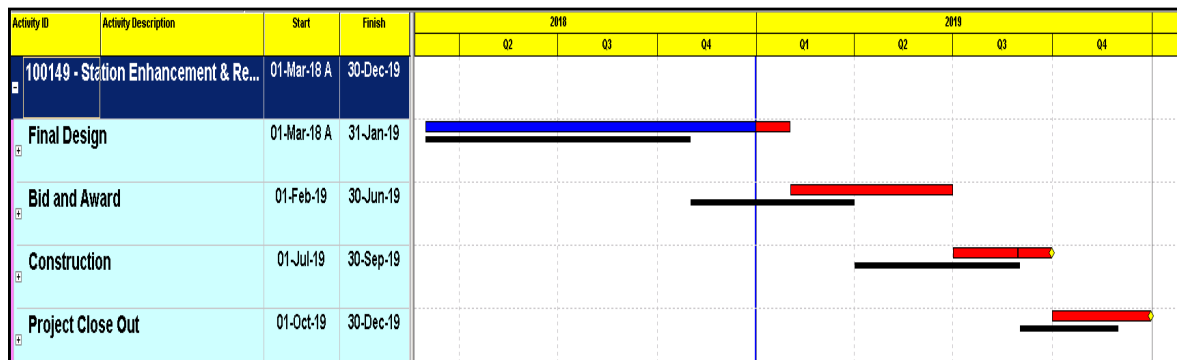
SCOPE: This project will include the following work:



San Francisco Station Restroom Renovation: The San Francisco Station restrooms have been subject to many years of abuse and vandalism. The project would include a full restoration of the restrooms with modern vandal resistant fixtures and finishes.

Issues: None.

SCHEDULE:



Progress:

Oct - Dec 2018

- (1) Held an onsite meeting with Tranist Police, JPB staff and TASI operations.
- (2) Developed preliminary floor plans and scope of work.

Future

Activities:

Jan - Mar 2019

- (1) Finalize the design of the floor plans and scope of work for San Francisco Station Restroom.

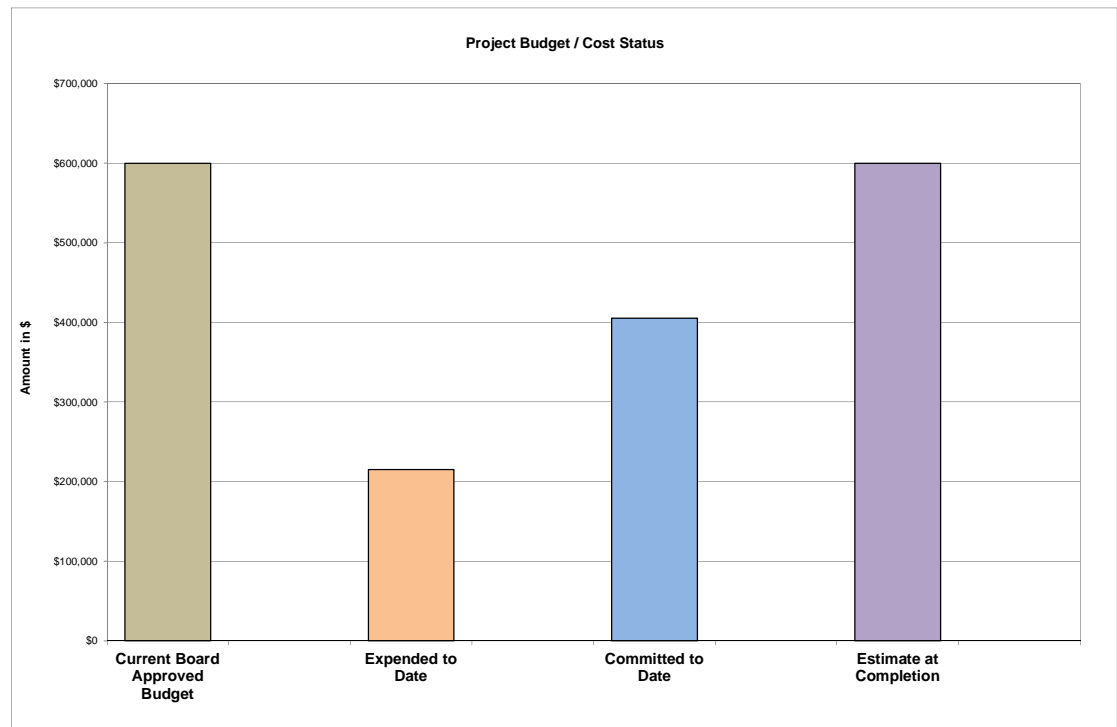
Issues: None.

STATION ENHANCEMENT AND RENOVATION

BUDGET:



	(a)	(b)	(c)	(d)	(e) = (a - d)
	Current Board Approved Budget	Expended to Date	Committed to Date	Estimate at Completion	Variance at Completion
Total Project	\$600,000	\$215,309	\$405,113	\$600,000	\$0



Issues: None.

SAFETY:



No incidents reported this quarter.

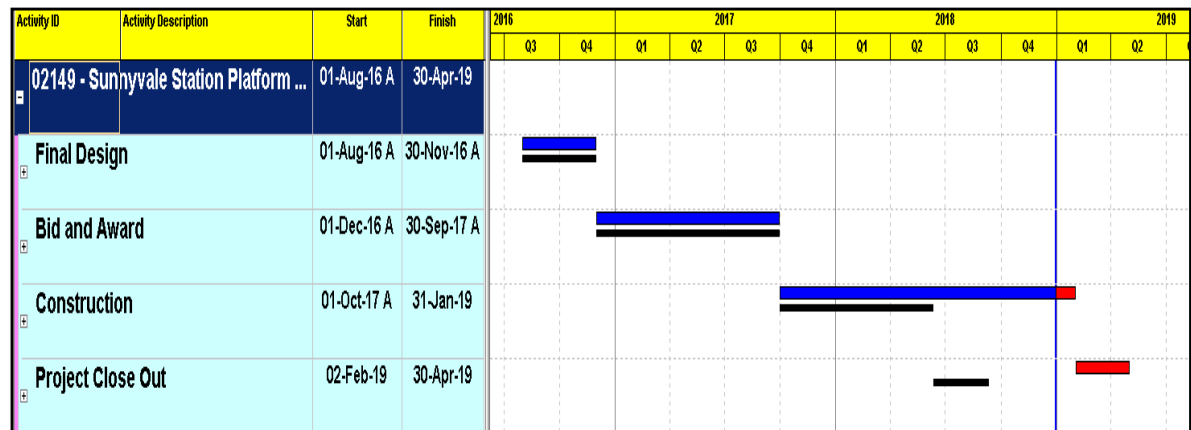
SUNNYVALE STATION PLATFORM REHABILITATION PROJECT



SCOPE: This project will reconstruct a portion of both existing platforms at Sunnyvale Station. Due to differential settlement the pavers used in the original construction are creating multiple tripping hazards. The reconstruction will remove the existing pavers, backfill and prepare the subgrade, insert #4 rebar into the existing concrete slabs and place new tinted concrete that will be stamped with a smooth finish similar to what was done at the Burlingame Station.



Issues: None.

SCHEDULE:**Progress:**

Oct - Dec 2018

- (1) Completed replacing platform.
- (2) Completed extending walk way for new pedestrian crossing.
- (3) Installed fence and handrails.
- (4) Began punchlisting work.

Future**Activities:**

Jan - Mar 2019

- (1) Complete punchlisting work.
- (2) Open north pedestrian crossing.
- (3) Begin project close out.

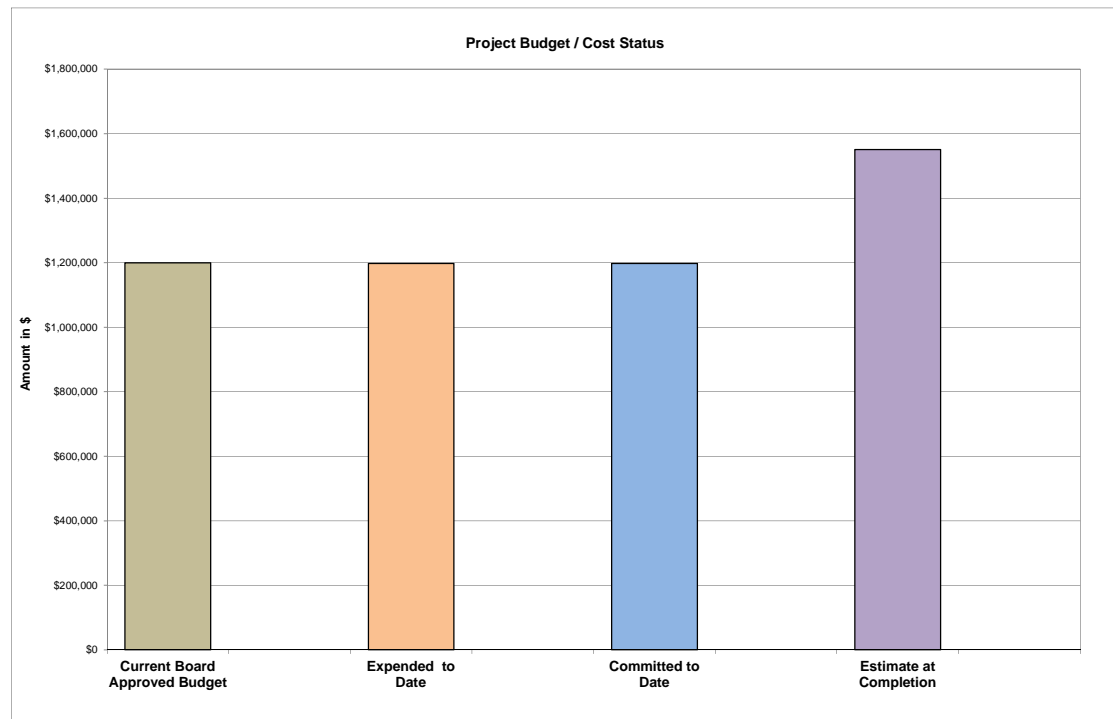
Issues: Schedule was extended due to work suspension associated with grounding requirements for the Electrification Project.

SUNNYVALE STATION PLATFORM REHABILITATION PROJECT

BUDGET:



	(a)	(b)	(c)	(d)	(e) = (a - d)
	Current Board Approved Budget	Expended to Date	Committed to Date	Estimate at Completion	Variance at Completion
Total Project	\$1,200,000	\$1,197,639	\$1,197,639	\$1,551,000	(\$351,000)



Issues: Estimate at Completion is being reviewed. Additional Board approved budget might be needed.

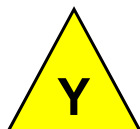
SAFETY:



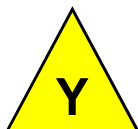
No incidents reported this quarter.

SYSTEMWIDE SIGNAL SYSTEM REHABILITATION PROJECT - FY2016

SCOPE



SCHEDULE



BUDGET/COST



SAFETY



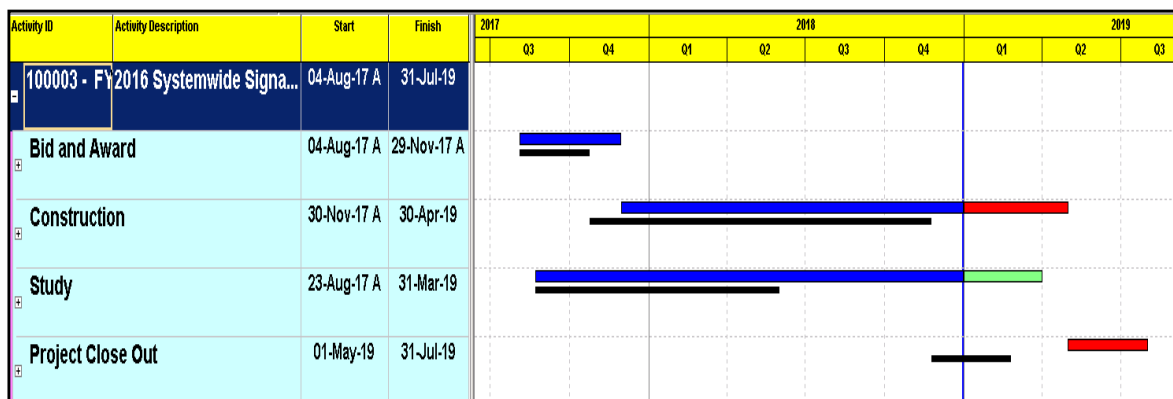
SCOPE: This project scope includes the following tasks:



1. Procure and replace incandescent crossing gate lights with LEDs.
2. Replace gate mechanisms at eight grade crossings.
3. Investigate the synchronization issues between the railroad signals in the field and the dispatch software.

Issues: Synchronization study may be removed from project scope, due to change from ATCS to MPLS line per Railroad Systems Engineering.

SCHEDULE:

**Progress:**

Oct - Dec 2018

- (1) Synchronization study continued to be on hold to explore other options.
- (2) Began installation of gate mechanisms.

Future**Activities:**

Jan - Mar 2019

- (1) Continue exploring other options for signal synchronization.
- (2) Continue installation of gate mechanisms.

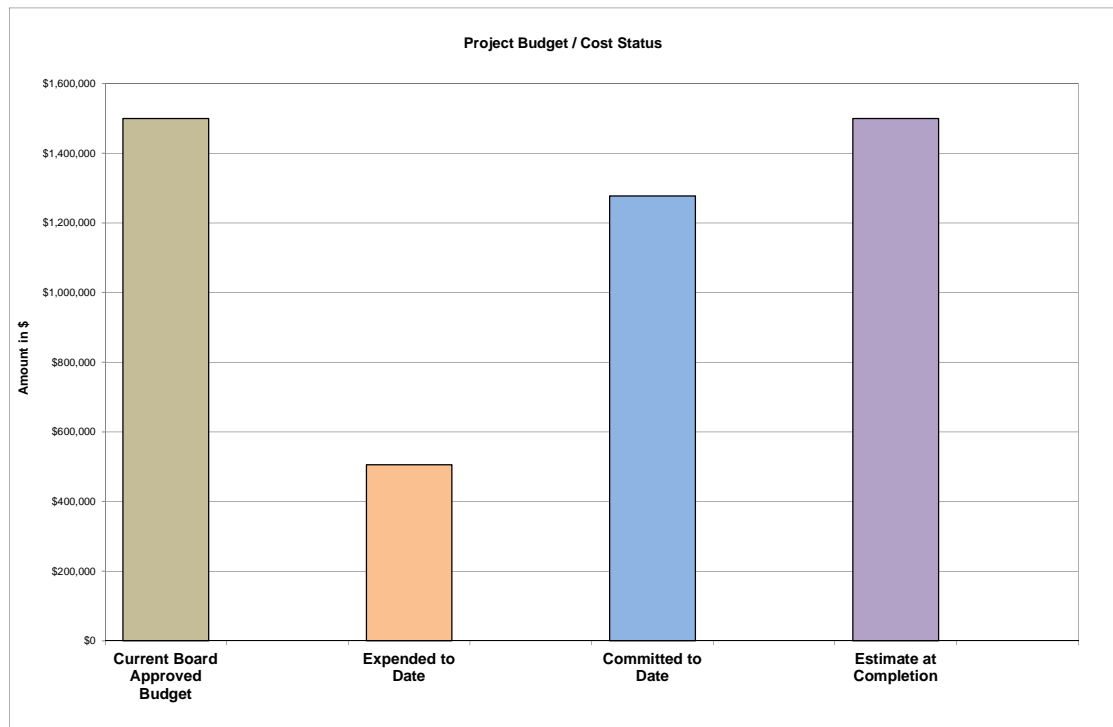
Issues: Schedule delay is due to redirection of TASI personnel working on higher priority capital projects.

SYSTEMWIDE SIGNAL SYSTEM REHABILITATION PROJECT - FY2016

BUDGET:



	(a)	(b)	(c)	(d)	(e) = (a - d)
	Current Board Approved Budget	Expended to Date	Committed to Date	Estimate at Completion	Variance at Completion
Total Project	\$1,500,000	\$505,545	\$1,277,547	\$1,500,000	\$0



Issues: None.

SAFETY:



No incidents reported this quarter.

SYSTEMWIDE SIGNAL SYSTEM REHABILITATION PROJECT - FY2017

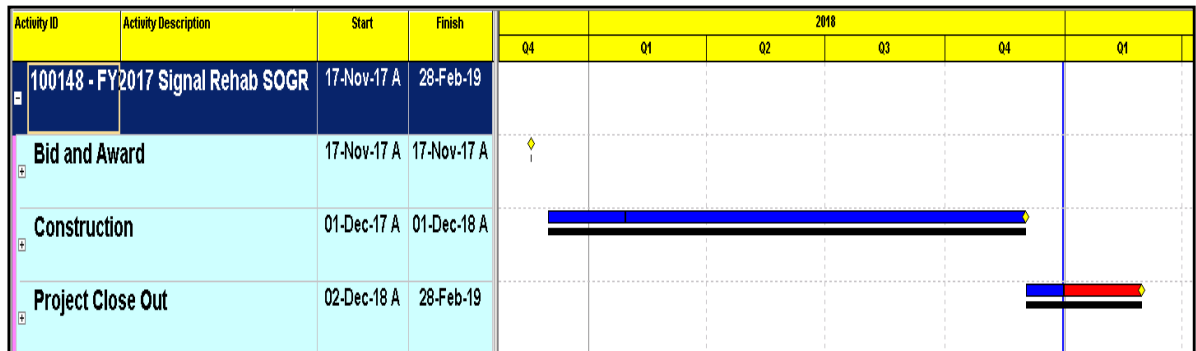


SCOPE: Procure 22 switch kits to retrofit 15 existing air switch machines in San Francisco Yard and seven M23 switch machines on the Right of Way in order to reduce operational delays resulting from switch failures.



Issues: None.

SCHEDULE:



Progress:

Oct - Dec 2018 (1) Completed construction.
(2) Scheduled final punchlist walk.
(3) Began project close out.

Future

Activities:

Jan - Mar 2019 (1) Conduct final punchlist walk.
(2) Complete punchlist work.
(3) Complete project close out.

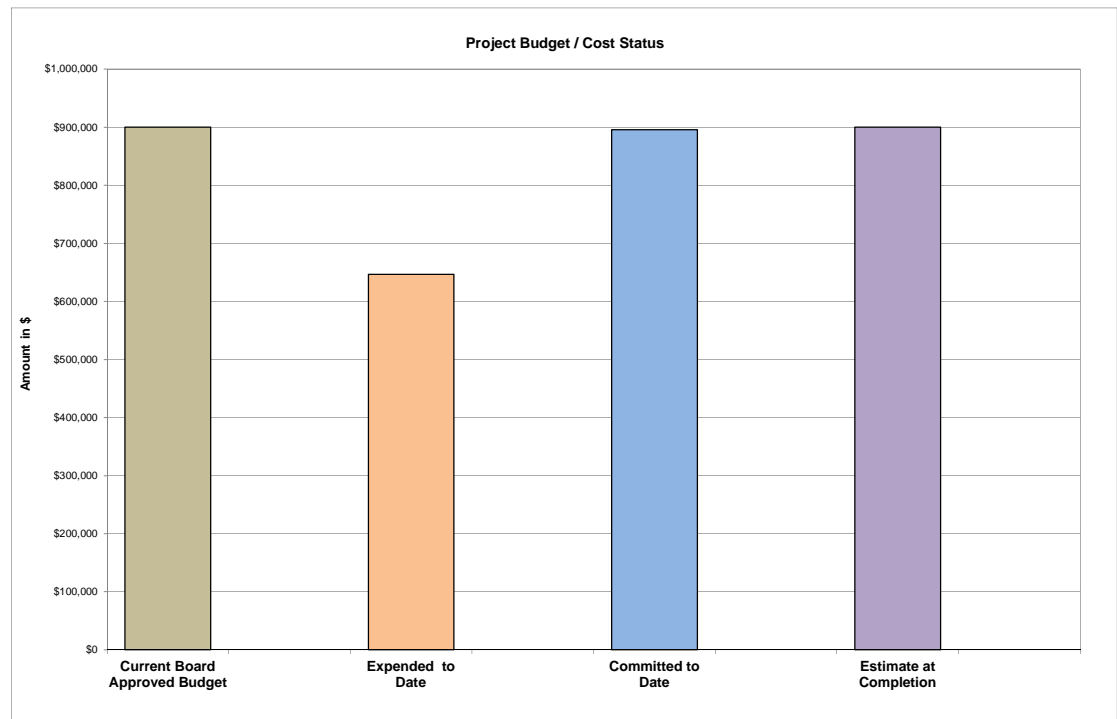
Issues: None.

SYSTEMWIDE SIGNAL SYSTEM REHABILITATION PROJECT - FY2017

BUDGET:



	(a)	(b)	(c)	(d)	(e) = (a - d)
	Current Board Approved Budget	Expended to Date	Committed to Date	Estimate at Completion	Variance at Completion
Total Project	\$900,000	\$646,765	\$895,731	\$900,000	\$0



Issues: None.

SAFETY:



No incidents reported this quarter.

SYSTEMWIDE STATION IMPROVEMENTS PROJECT – FY2016



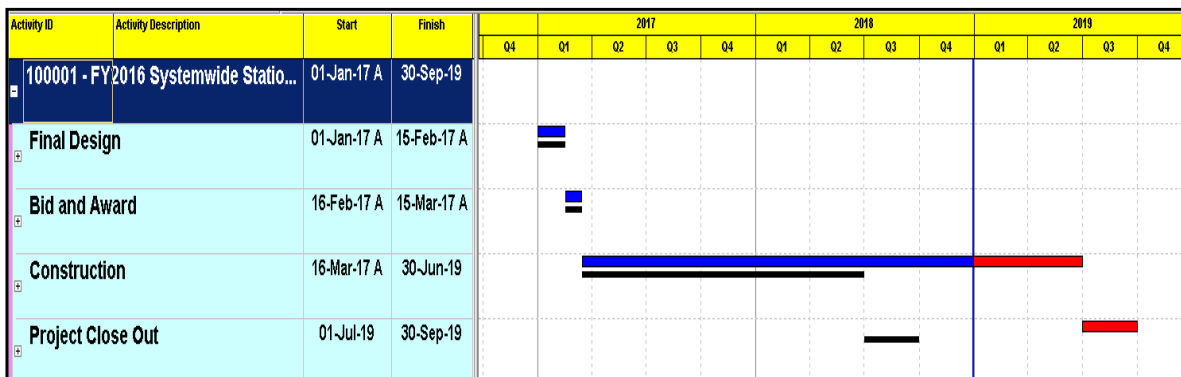
SCOPE: This project provides improvements at various passenger stations along the Caltrain right of way.



The project is divided into the following three modules :

1. Module 75 - San Francisco 4th & King Station Floor Rehabilitation. (Complete)
2. Module 76 - San Carlos Station LED Replacement. (Complete)
3. Module 77 - Bayshore and Redwood City Stations LED Replacement.

Issues: None.

SCHEDULE:**Progress:**

Oct - Dec 2018

- (1) Reviewed proposed LED replacement procurement methodology.
- (2) Worked with San Mateo County Energy Watch (SMCEW) to establish what LED rebates are available to public agencies and other potential programs.
- (3) Began developing criteria and call for a public hearing at PCJPB Board meeting for LED replacement.

Future**Activities:**

Jan - Mar 2019

- (1) Complete developing criteria and call for a public hearing at PCJPB Board meeting LED replacement.
- (2) Award LED replacement contract.

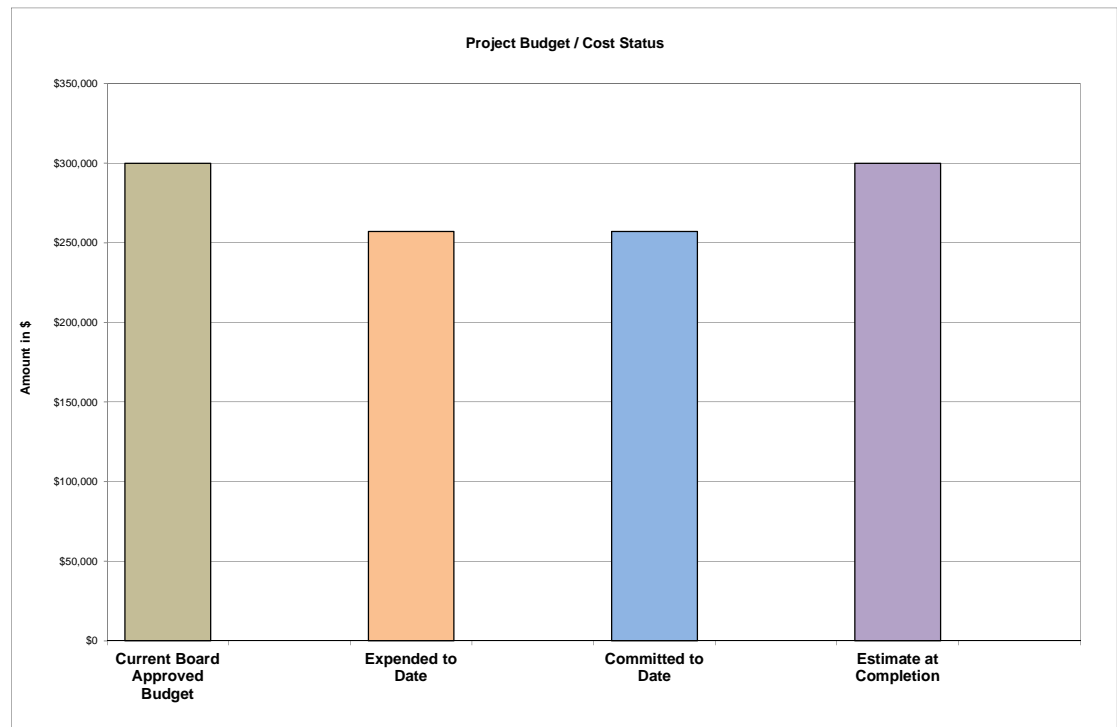
Issues: Schedule delay is due to reviewing of alternative methodology for LED replacement at multiple stations across Caltrain system.

SYSTEMWIDE STATION IMPROVEMENTS PROJECT – FY2016

BUDGET:



	(a)	(b)	(c)	(d)	(e) = (a - d)
	Current Board Approved Budget	Expended to Date	Committed to Date	Estimate at Completion	Variance at Completion
Total Project	\$300,000	\$257,093	\$257,093	\$300,000	\$0



Issues: None.

SAFETY:



No incidents reported this quarter.

SYSTEMWIDE STATION IMPROVEMENTS PROJECT - FY2017



SCOPE: This project provides improvements at various passenger stations along the Caltrain right of way.



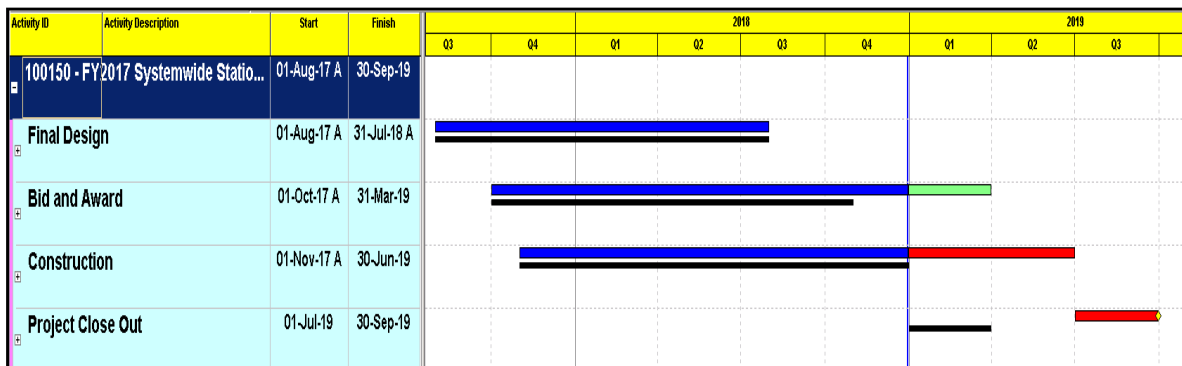
The project includes the following modules :

Module 91 - Replace Information Display Cases – continue with priority list. (Complete)

Module 92 - Install additional bike racks – San Antonio. (Complete)

Module 93 - Retrofit existing lights with LEDs – Hayward Park Station.

Issues: None.

SCHEDULE:**Progress:**

Oct - Dec 2018

- (1) Reviewed proposed LED replacement procurement methodology.
- (2) Worked with San Mateo County Energy Watch (SMCEW) to establish what LED rebates are available to public agencies and other potential programs.
- (3) Began developing criteria and call for a public hearing at PCJPB Board meeting for LED replacement.

Future**Activities:**

Jan - Mar 2019

- (1) Complete developing criteria and call for a public hearing at PCJPB Board meeting LED replacement.
- (2) Award LED replacement contract.

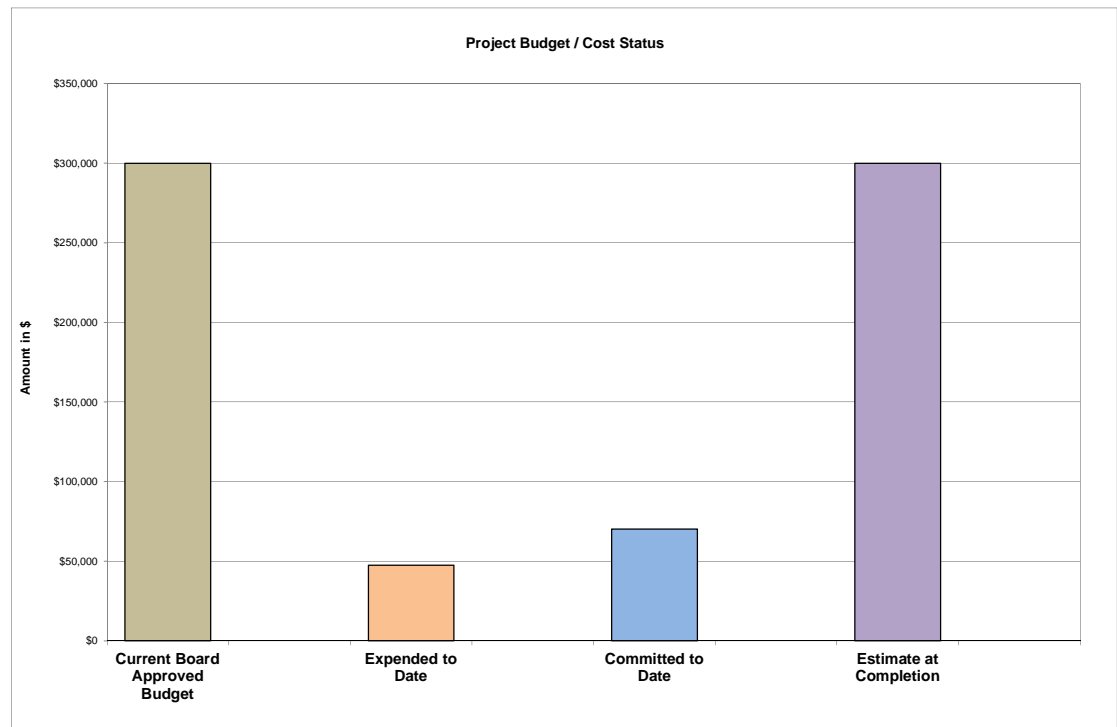
Issues: Schedule delay is due to reviewing of alternative methodology for LED replacement at multiple stations across Caltrain system.

SYSTEMWIDE STATION IMPROVEMENTS PROJECT - FY2017

BUDGET:



	(a)	(b)	(c)	(d)	(e) = (a - d)
	Current Board Approved Budget	Expended to Date	Committed to Date	Estimate at Completion	Variance at Completion
Total Project	\$300,000	\$47,539	\$70,122	\$300,000	\$0



Issues: None.

SAFETY:



No incidents reported this quarter.

SYSTEMWIDE TRACK REHABILITATION PROJECT - FY2017

SCOPE



SCHEDULE



BUDGET/COST



SAFETY



SCOPE:



The System Wide Track Rehabilitation Program covers the work required to keep the Caltrain railroad in a state of good repair. The type and scope of work scheduled for each fiscal year is based upon the condition of the railroad as reflected in Caltrain's State of Good Repair database. This database is updated regularly with input from track inspections and tests that are performed throughout the year. Each fiscal year, a new project is set up to cover the track work performed that year. The scope proposed for FY2017 system wide track rehabilitation includes the following:

1. Replace stock rails points and frogs on as-needed.
2. Perform 100 welds approximately 50 in the removal of bonded insulated joints – about 50 locations and 50 welds in the welding of replaced stock rails, points and frogs for a total of 100 welds.
3. Replacement of standard ties on mainline tracks, approximately 1,500 ties.
4. Replacement of 200 switch ties on main tracks and yards.
5. Surfacing 30 miles of curve and tangent track, and 25 turn outs, various locations determined by geometry car inspections and field track inspections.
6. Upgrade and maintain rail lubricators.
7. Purchase of small tools and equipment required for track maintenance activities.
8. Work in South San Francisco yard, billable to UP.
9. Repair track and station platforms at College Park Station.
10. Minor repairs to bridges, culverts and structures – per annual inspection needs.
11. Leased facilities, purchase and rental equipment.
12. Purchased services – rail detector, geometry inspections, weed abatement etc.

Issues:

None.

SCHEDULE:



Activity ID	Activity Description	Start	Finish	2018				
				Q2	Q3	Q4	Q1	Q2
100145 - FY2017 Systemwide Track...		01-Apr-18 A	30-Apr-19					
Construction		01-Apr-18 A	31-Jan-19					
Project Close Out		01-Feb-19	30-Apr-19					

Progress:

Oct - Dec 2018

- (1) Surfaced 2.7 miles of main line track.
- (2) Stabilized 2.7 miles of track
- (3) Regulated 2.7 miles of ballast.
- (4) Built up 34 frog inserts.
- (5) Ground 96 switches.
- (6) Performed seven thermite welds.
- (7) Installed three insulated joints.
- (8) Installed 120 anchors.
- (9) Installed 179 pandrols.
- (10) Changed out 836 feet of rail.

- (11) FRA conducted four site visits.
- (12) CPUC conducted four visits.
- (13) Installed 76 cross ties.
- (14) Installed 27 switch ties.
- (15) Performed ultrasonic (UT) hyrail inspection.
- (16) Performed ultrasonic (UT) weld testing.
- (17) Performed gage restraint.
- (18) Performed tree trimming.
- (19) Performed fencing installation.

Future

Activities:

Jan - Mar 2019

- (1) Continue ongoing maintenance work.
- (2) Complete construction.
- (3) Begin project close out.

Issues:

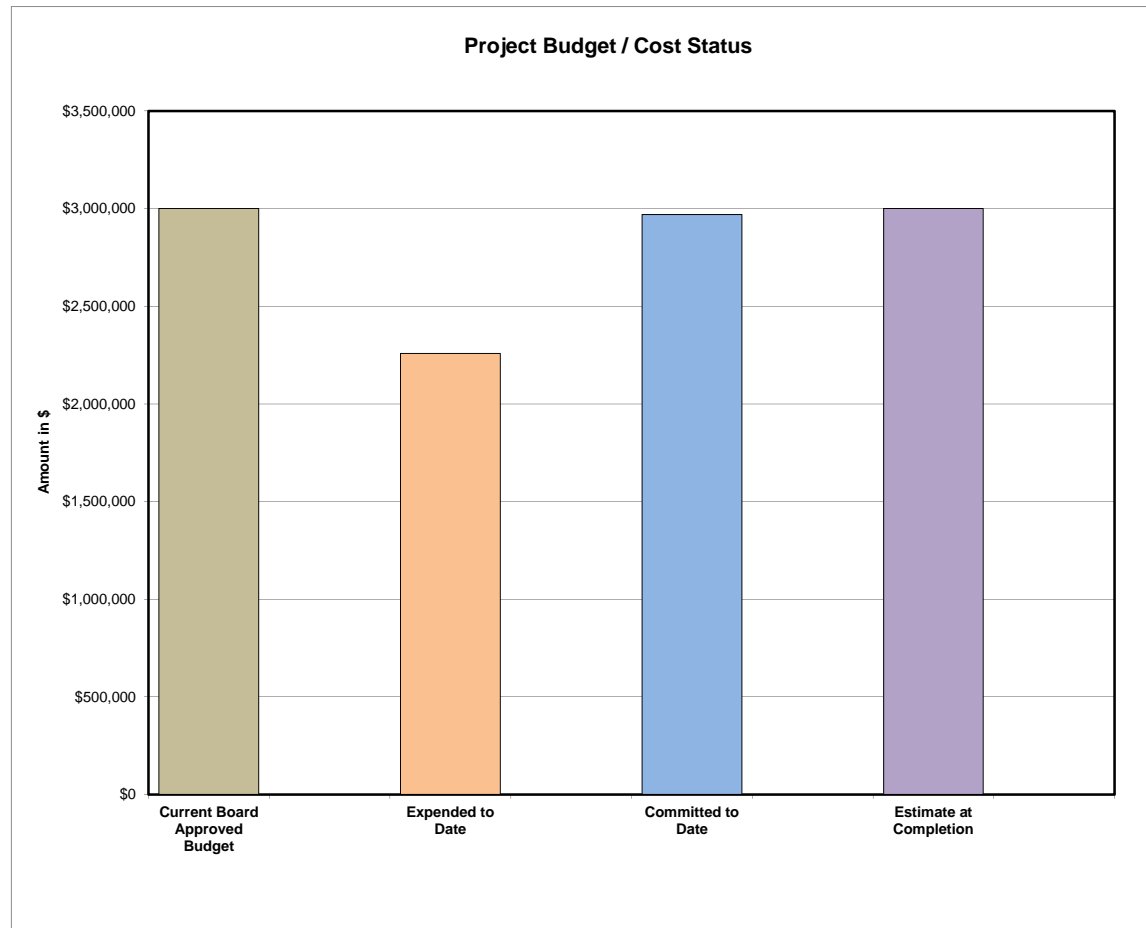
None.

SYSTEMWIDE TRACK REHABILITATION PROJECT - FY2017

BUDGET:



	(a)	(b)	(c)	(d)	(e) = (a - d)
	Current Board Approved Budget	Expended to Date	Committed to Date	Estimate at Completion	Variance at Completion
Project Total	\$3,000,000	\$2,258,356	\$2,969,383	\$3,000,000	\$0



Issues: None.

SAFETY:



No incidents reported this quarter.

This page is intentionally left blank.

Caltrain

Disadvantaged Business Enterprise (DBE)

Quarterly Status Report

Based on Contracts through 4th Quarter Federal Fiscal Year 2018
October 1, 2017 to September 30, 2018

The following is a summary of Caltrain's Federal Fiscal Year to date DBE Status:

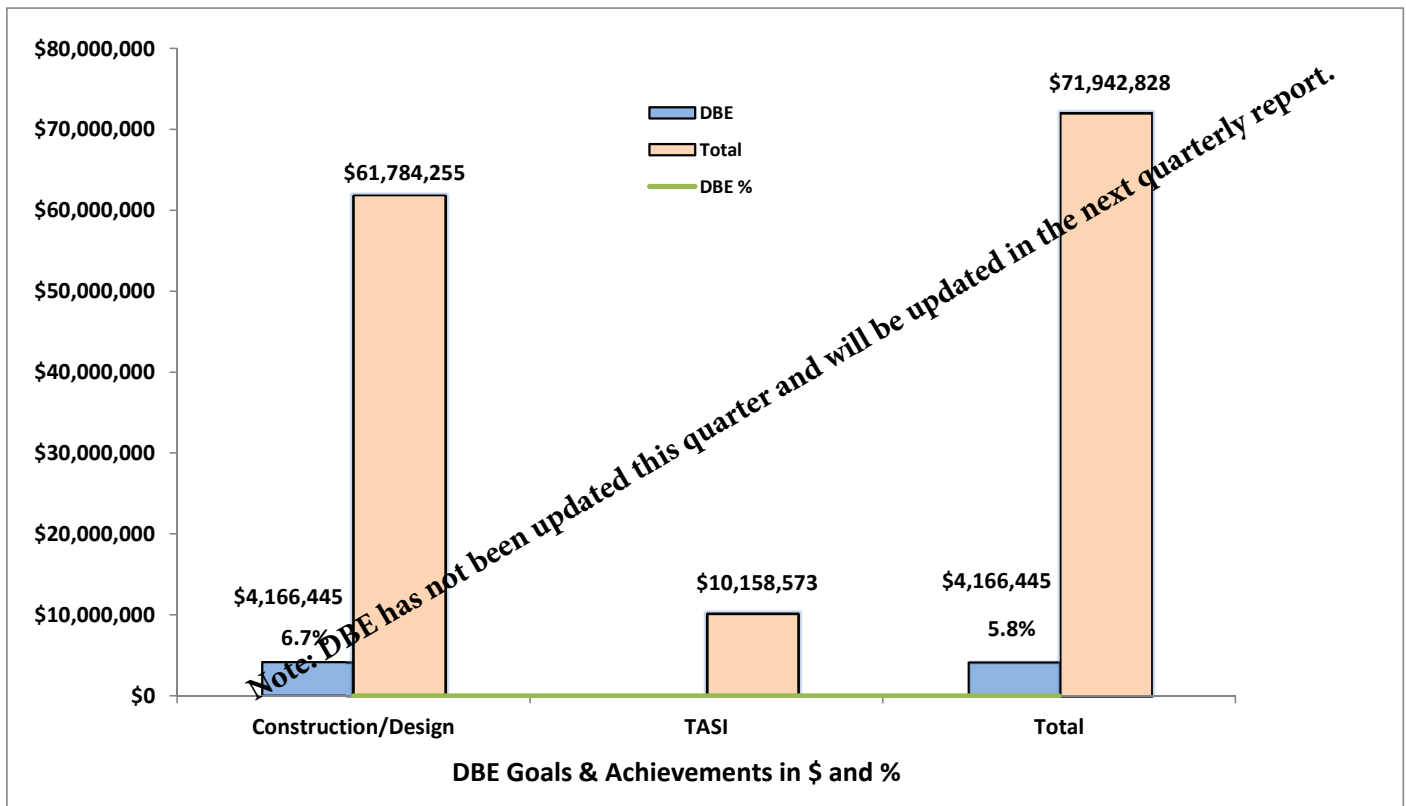
<u>Contract Type</u>	<u>Total Contracts Awarded</u>	<u>DBE Contracts Awarded</u>	<u>% DBE Awarded</u>
Construction/Design Contracts (1)	\$61,784,255	\$4,166,445	6.7%
TASI Contracts	\$10,158,573	\$0	0.0%
Total	\$71,942,828	\$4,166,445	5.8%

Overall Annual Goal in % 14.0%

% Over/(Under) Goal -8.2%

(1) Also includes On-Call Consultants, Rent and Misc. Contracts.

*Contract-Specific DBE goals will be instituted on upcoming Capital Projects to increase DBE utilization.



Definition of Terms

Committed to Date – The encumbered amount of work directives, contracts, and purchase orders plus any non PO related expenditures.

Current Board Approved Budget – The original budget plus approved budget changes.

Estimate at Completion (EAC) – The estimated final cost of the project.

Expended to Date – The project costs that have been recorded in the financial system plus the accrual cost of work performed through the current period.

Variance at Completion – The difference between the Current Board Approved Budget and the EAC. A positive value reflects a potential underrun whereas a negative amount indicates a possible overrun.

Performance Status (Traffic Light) Criteria

SECTIONS	On Target (GREEN)	Moderate Risk (YELLOW)	High Risk (RED)
1. SCOPE	<p>(a) Scope is consistent with Budget or Funding.</p> <p>(b) Scope is consistent with other projects.</p> <p>(c) Scope change has been mitigated.</p>	<p>(a) Scope is NOT consistent with Budget or Funding.</p> <p>(b) Scope appears to be in conflict with another project.</p> <p>(c) Scope changes have been proposed.</p>	<p>(a) Significant scope changes / significant deviations from the original plan.</p>
2. BUDGET	<p>(a) Estimate at Completion is within plus /minus 5% of the Current Board Approved Budget.</p>	<p>(a) Estimate at Completion exceeds the Current Board Approved Budget by 5% to 10%.</p>	<p>(a) Estimate at Completion exceeds the Current Board Approved Budget by more than 10%.</p>
3. SCHEDULE	<p>(a) Project milestones / critical path are within plus/minus two months of the current baseline schedule.</p> <p>(b) Physical progress during the report period is consistent with incurred expenditures.</p> <p>(c) Schedule has been defined.</p>	<p>(a) Project milestones / critical path show slippage. Project is more than two to six months behind the current baseline schedule.</p> <p>(b) No physical progress during the report period, but expenditures have been incurred.</p> <p>(c) Detailed baseline schedule NOT finalized.</p>	<p>(a) Project milestones / critical path show slippage more than two consecutive months.</p> <p>(b) Forecast project completion is later than the current baseline scheduled completion by more than six months.</p> <p>(c) Schedule NOT defined for two consecutive months.</p>
4. SAFETY	<p>(a) No reported safety related incidents on the project.</p>	<p>(a) One Near Miss or incident requiring written report based on contract requirements.</p>	<p>(a) Injury (worker or passenger) requiring reporting to the Federal Railroad Administration.</p> <p>(b) Two or more Miss or incident requiring written report based on contract requirements.</p>

Schedule Legend

	Completed
	Critical path
	Baseline/target schedule