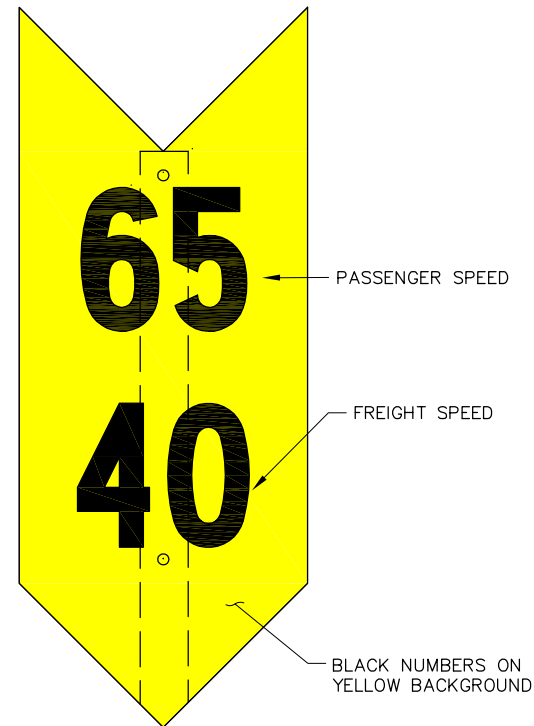
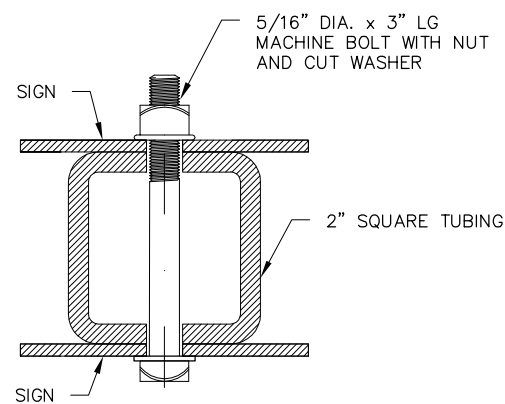


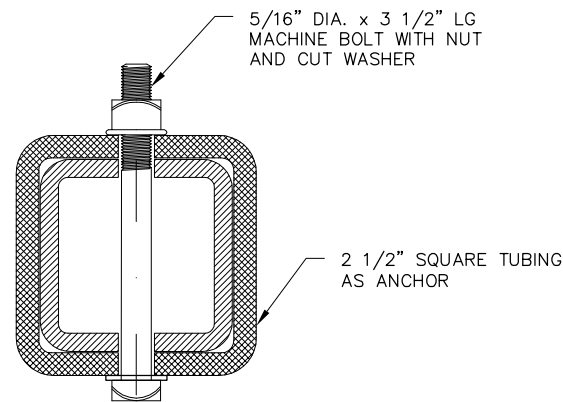
INCREASE SPEED SIGN



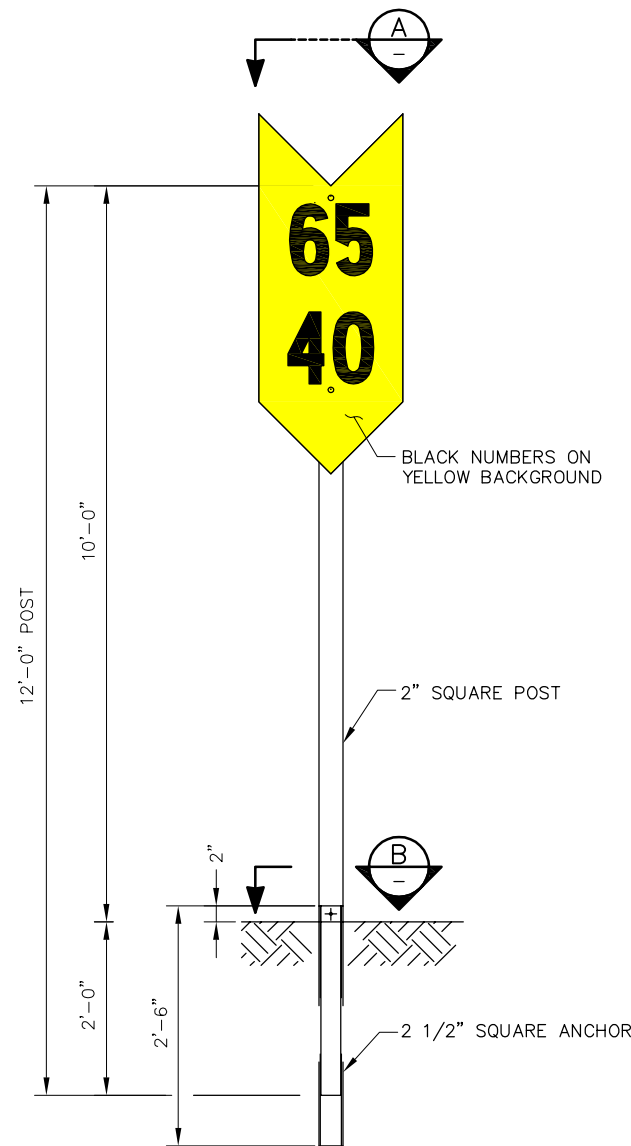
DECREASE SPEED SIGN



THROUGH SIGN AND POST



THROUGH POST AND ANCHOR



STEEL MOUNTING POST AND INSTALLATION DETAIL

BILL OF MATERIAL	
QUANTITY REQUIRED	ITEM
SPEED SIGN - COMPLETE	
2	PERMANENT SPEED SIGNS
1	2" x 2" x 11'-6" LONG SQUARE POST FOR SPEED SIGN
1	2 1/2" x 2 1/2" x 30" LONG SQUARE ANCHOR FOR SIGN POST
2	CARRIAGE BOLTS WITH NUTS AND WASHERS (GALVANIZED) PER SPECIFICATIONS BELOW

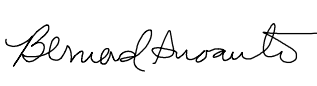

NOTES:

- ALL SIGNS SHALL BE PLACED ON RIGHT SIDE OF TRACK IN THE DIRECTION OF APPROACH TO SPEED CHANGE WITH THE NEAREST POINT OF SIGN TO BE AT MINIMUM OF 10 FEET FROM THE GAGE SIDE OF THE NEAREST RAIL. SIGNS SHALL BE PLACED ON OUTSIDE OF EACH TRACK. SIGNS SHALL BE PLACED ON BOTH SIDES OF THE POST FOR BI-DIRECTIONAL OPERATIONS
- REDUCED SPEED SIGNS SHALL BE LOCATED 2640 FEET (1/2 MILE) IN ADVANCE OF THE RESTRICTED TERRITORY AND SHALL INDICATE THE MAXIMUM SPEED PERMITTED AS SHOWN IN THE CURRENT TIME TABLE. PASSENGER SPEEDS SHALL BE SHOWN AT THE TOP AND FREIGHT AT THE BOTTOM
- INCREASE SPEED SIGNS SHALL BE PLACED TO INDICATE WHERE SPEED OF TRAIN MAY BE INCREASED. THIS SIGN SHALL NOT BE PLACED WHERE THERE IS LESS THAN 1/2 MILE BETWEEN THE END OF ONE SPEED RESTRICTION AND THE BEGINNING OF ANOTHER SPEED RESTRICTION
- ALL HARDWARE MUST BE VANDAL RESISTANT, AND HOT DIPPED GALVANIZED
- FOR LETTERS AND NUMBERS, SEE SD-9101
- THE SIGN PANELS SHALL BE METALLIC IN CONSTRUCTION: BAKED POWER-COATED FINISH, SILK-SCREENED AND SEALED NUMERALS/LETTERS, REFLECTIVE PAINT SURFACES, UV PROTECTION COATING, AND AN ANTI-GRAFFITI COATING. SUBMIT FOR CALTRAIN APPROVAL A FULL DESCRIPTION OF MATERIALS, COATING/FINISHES AND PROCESSES UTILIZED IN THE MANUFACTURE OF THE PROPOSED SIGN
 - SIGN PANELS: 0.135" THICK MILL FINISH ALUMINUM, ALCOG 6016-T6
 - NUMBERS AND LETTERS: BLACK COLOR
 - PAINT ALL SIDES WITH LINEAR POLYURETHANE
 - SHEETING SHALL BE RETRO-REFLECTIVE PRISMATIC, ASTM 4956 CLASS III OR HIGHER
 - ANTI-GRAFFITI: COATING: EXTERIOR GRADE, SENSITIVE CLEAR MYLAR, 3M-1160


REV	DATE	BY	CHK	APP	DESCRIPTION	REV	DATE	BY	CHK	APP	DESCRIPTION

PENINSULA CORRIDOR JOINT POWERS BOARD

APPROVED BY:

ENGINEERING MANAGER DEPUTY DIRECTOR OF ENGINEERING



1250 San Carlos Avenue
San Carlos, CA 94070

STANDARD DRAWINGS

RIGHT-OF-WAY SIGNAGE

PERMANENT SPEED SIGN

CADD FILE NO.: SD-9106

REV 0 DATE 093011

RIGHT-OF-WAY

STANDARD NO.: SD-9106