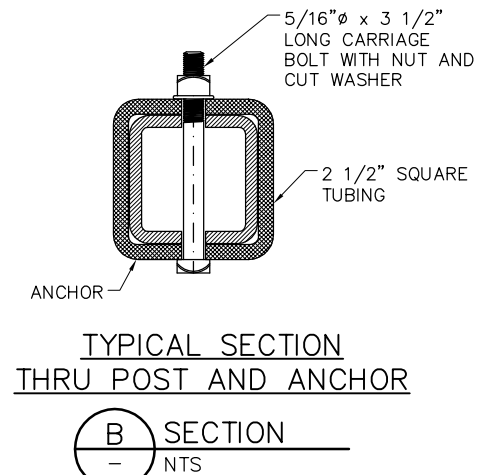
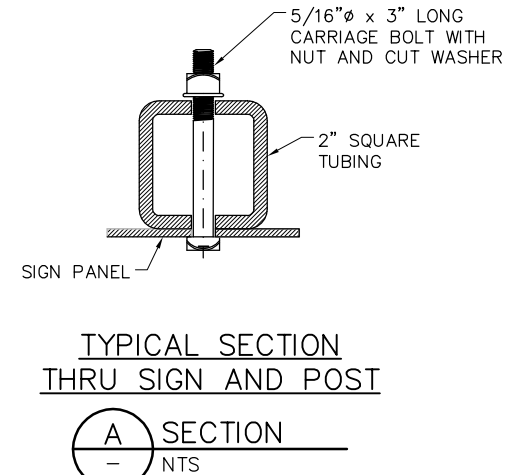
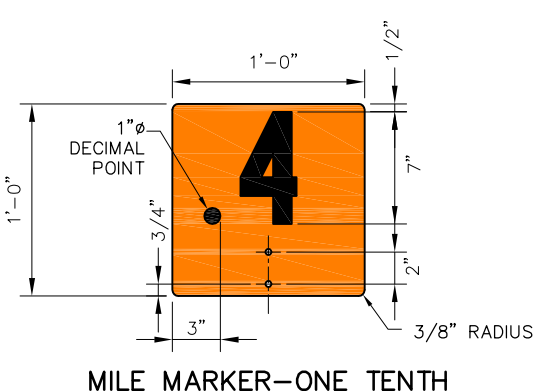
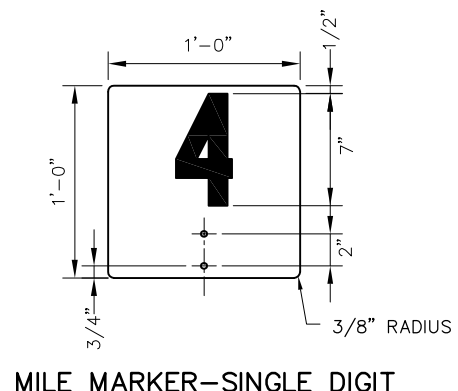
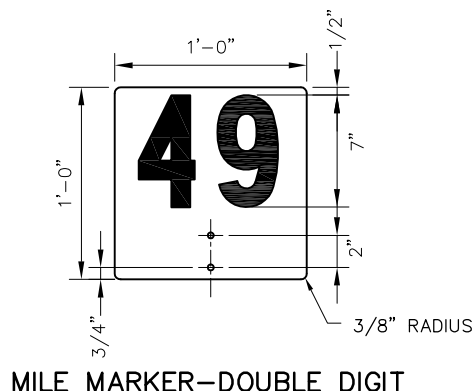


- NOTES:**
- ACTUAL LOCATION MAY BE ADJUSTED SLIGHTLY TO AVOID OBSTRUCTIONS. SIGNS MUST BE READILY VISIBLE FROM LOCOMOTIVES IN BOTH DIRECTIONS
  - THE SIGN PANELS SHALL BE METALLIC IN CONSTRUCTION; BAKED POWER-COATED FINISH, SILK-SCREENED AND SEALED NUMERALS/LETTERS, REFLECTIVE PAINT SURFACES, UV PROTECTION COATING, AND AN ANTI-GRAFFITI COATING. SUBMIT FOR CALTRAIN APPROVAL A FULL DESCRIPTION OF MATERIALS, COATING/FINISHES AND PROCESSES UTILIZED IN THE MANUFACTURE OF THE PROPOSED SIGN
    - SIGN PANELS: 0.135" THICK MILL FINISH ALUMINUM, ALCOG 6016-T6
    - NUMBERS AND LETTERS: BLACK COLOR
    - PAINT ALL SIDES WITH LINEAR POLYURETHANE
    - SHEETING SHALL BE RETRO-REFLECTIVE PRISMATIC, ASTM 4956 CLASS III OR HIGHER
    - ANTI-GRAFFITI: COATING: EXTERIOR GRADE, SENSITIVE CLEAR MYLAR, 3M-1160
  - ALL HARDWARE SHALL BE VANDAL RESISTANT, HOT DIPPED GALVANIZED
    - BOLTS: 2024-T4 ALLOY
    - POSTS: "U" CHANNEL. POST FURNISHED WITH 3/8" HOLES ON 1" CENTERS FOR THE ENTIRE LENGTH OF THE POST AND A POINTED END. DIMENSIONS 1 7/16", WIDTH 3 1/16", THICKNESS 11 GAUGE
    - NUTS: TAMPER RESISTANT, ALCOA OR ENGINEER APPROVED EQUAL
    - WASHERS: CUT WASHERS
  - MILEPOST MARKER SHALL BE PLACED ON THE RIGHT SIDE OF TRACK GOING FROM SAN FRANCISCO MT-2 AND TAMMEN MT-1. MARKER MUST BE LOCATED WHERE IT CAN BE READILY SEEN FROM THE TRACK
  - MILEPOST MARKER SHALL BE PLACED ON CENTER FENCE AT STATIONS TRACK. SIGNS SHALL BE PLACED ON BOTH SIDES OF POST, FOR BI-DIRECTIONAL MOVEMENT
  - MILEPOST MARKERS:
    - PANEL: 14 GAUGE SHEET ALUMINUM MILL FINISH SIMILAR TO ALCOA 6061-T6
    - COAT BOTH SIDES WITH WIDE ANGLE SCOTCHLITE RETRO-REFLECTIVE SHEETING WITH BLACK SCREENED NUMBER
    - BOLT HOLES: PUNCH ONLY AFTER MARKER DECAL APPLIED
    - MOUNTING: 2 SETS OF (2) 5/16" X 3" LONG CARRIAGE BOLTS, LOCK WASHERS AND STIFFENER PLATES.
  - FOR LETTERS AND NUMBERS, SEE SD-9101

**MILE MARKER**  
SIGN POST SECTION FACING RAILROAD NORTH AND SOUTH

**NO TRESPASSING SUICIDE PREVENTION**  
SIGN POST SECTION FACING EAST AND WEST ON ROW  
• NORTH AND SOUTH AT GRADE CROSSINGS

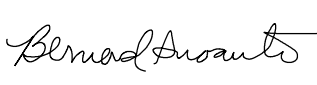

**ONE TENTH MILE MARKER**  
SIGN POST SECTION FACING RAILROAD NORTH AND SOUTH




REV	DATE	BY	CHK	APP	DESCRIPTION

**PENINSULA CORRIDOR JOINT POWERS BOARD**

APPROVED BY:

ENGINEERING MANAGER      DEPUTY DIRECTOR OF ENGINEERING

  
 1250 San Carlos Avenue  
 San Carlos, CA 94070

**STANDARD DRAWINGS**

RIGHT-OF-WAY SIGNAGE  
MILEPOST MARKERS  
NO TRESPASSING/SUICIDE PREVENTION SIGN

CADD FILE NO.:	SD-9103
REV	DATE
0	093011
RIGHT-OF-WAY	
STANDARD NO.:	SD-9103