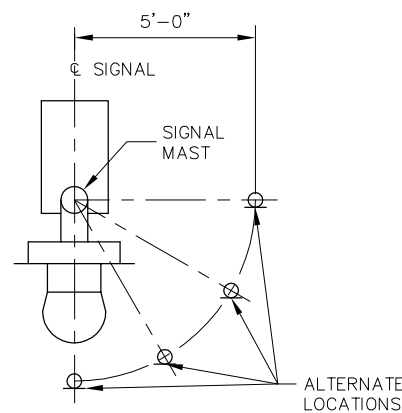
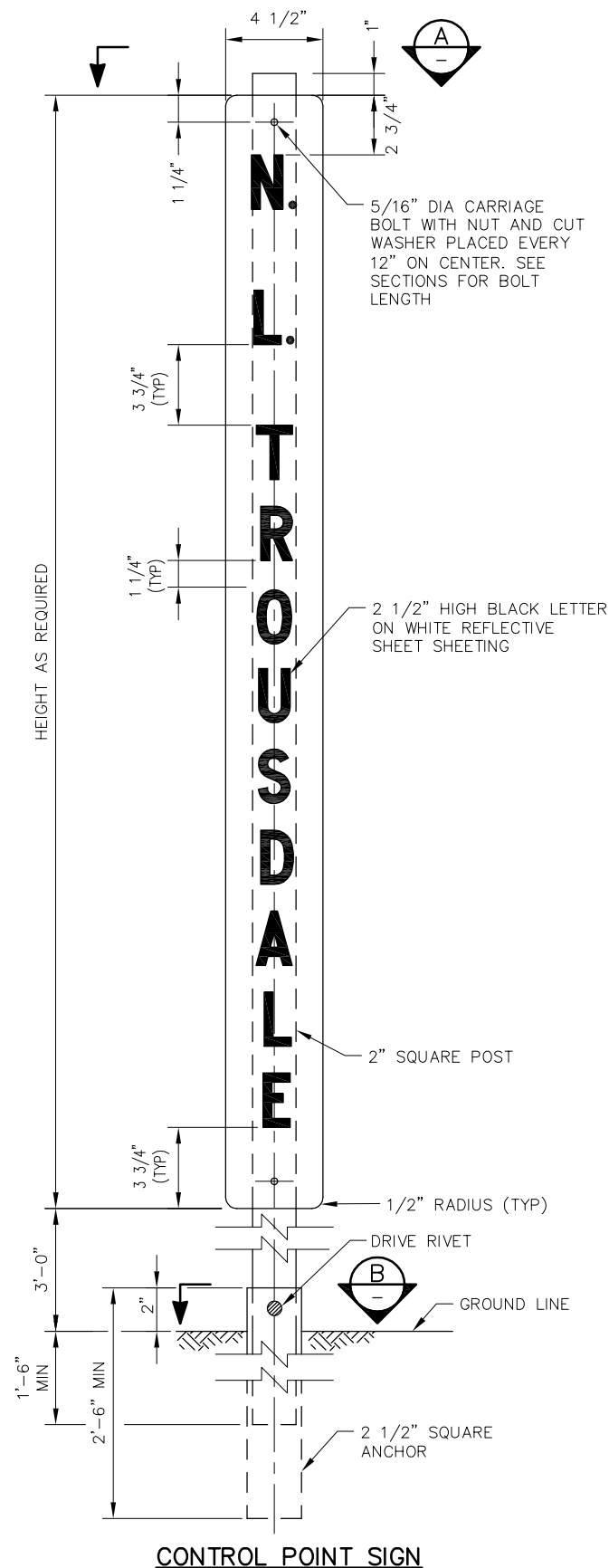


FRONT VIEW



TOP VIEW

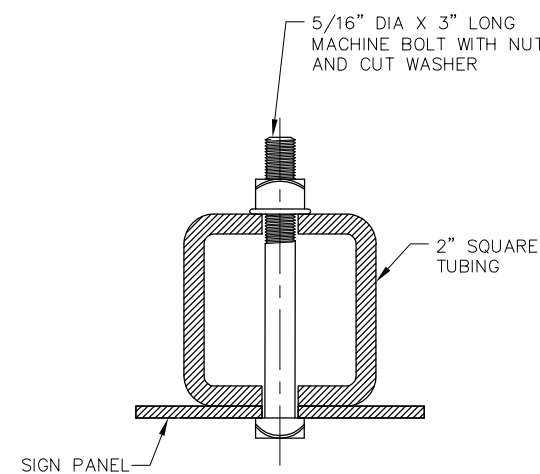
CONTROL POINT SIGN INSTALLATION



CONTROL POINT SIGN

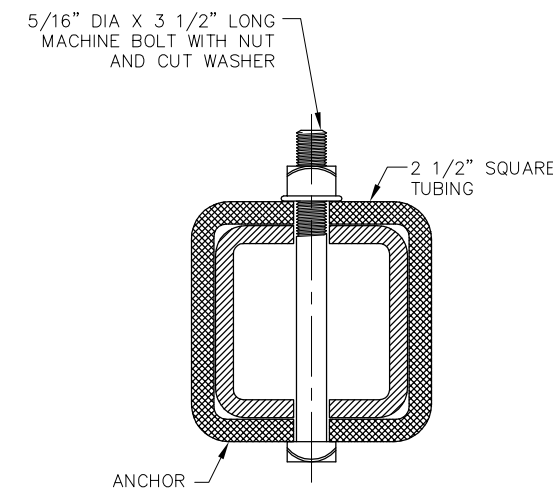
NOTES:

- SIGNS SHALL BE USED ON THE SIDE OF EACH TRACK ADJACENT TO SIGNAL CONTROLLING ENTRANCE TO CONTROL POINTS. USE THE FOLLOWING ABBREVIATIONS: N.=NORTH, S.=SOUTH AND L.=LIMITS
- WHERE DWARF SIGNALS ARE USED, PLACE CONTROL POINT SIGNS SUCH THAT THEY DO NOT OBSTRUCT SIGNALS
- THE SIGN PANELS SHALL BE METALLIC IN CONSTRUCTION; BAKED POWER-COATED FINISH, SILK-SCREENED AND SEALED NUMERALS/LETTERS, REFLECTIVE PAINT SURFACES, UV PROTECTION COATING, AND AN ANTI-GRAFFITI COATING. SUBMIT FOR CALTRAIN APPROVAL A FULL DESCRIPTION OF MATERIALS, COATING/FINISHES AND PROCESSES UTILIZED IN THE MANUFACTURE OF THE PROPOSED SIGN
 - SIGN PANELS: 1/8" THICK MILL FINISH ALUMINUM, ALCOG 6016-T6
 - NUMBERS AND LETTERS: BLACK COLOR
 - PAINT ALL SIDES WITH LINEAR POLYURETHANE
 - COAT SIGN FACE WITH ENGINEERING GRADE, PRESSURE SENSITIVE, RETRO-REFLECTIVE WHITE VINYL SHEETING
 - ANTI-GRAFFITI: COATING: EXTERIOR GRADE, SENSITIVE CLEAR MYLAR, 3M-1150
- FOR LETTERS AND NUMBERS SEE SD-9101
- ALL HARDWARE SHALL BE VANDAL RESISTANT, HOT DIPPED GALVANIZED
 - BOLTS: 2024-T4 ALLOY
 - POSTS: "U" CHANNEL. POST FURNISHED WITH 3/8" HOLES ON 1" CENTERS FOR THE ENTIRE LENGTH OF THE POST AND A POINTED END. DIMENSIONS 1 7/16", WIDTH 3 1/16", THICKNESS 11 GAUGE
 - NUTS: TAMPER RESISTANT, ALCOA OR ENGINEER APPROVED EQUAL
 - WASHERS: CUT WASHERS



THROUGH SIGN AND POST

A SECTION
SCALE: FULL





THROUGH POST AND ANCHOR


B SECTION
SCALE: FULL

REV	DATE	BY	CHK	APP	DESCRIPTION	REV	DATE	BY	CHK	APP	DESCRIPTION

PENINSULA CORRIDOR JOINT POWERS BOARD

APPROVED BY:



1250 San Carlos Avenue
San Carlos, CA 94070

STANDARD DRAWINGS

RIGHT-OF-WAY SIGNAGE

CONTROL POINT SIGNS

CADD FILE NO.:	SD-9102
REV	DATE
0	093011
RIGHT-OF-WAY	
STANDARD NO.:	SD-9102