


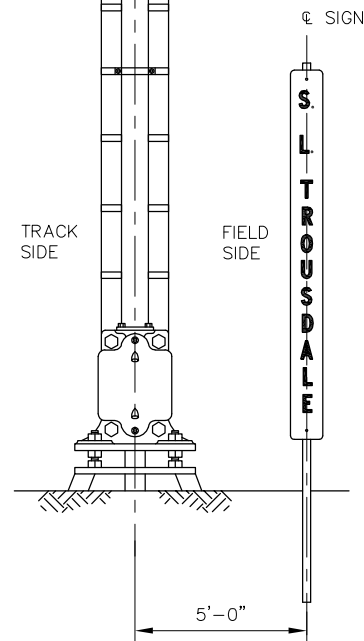
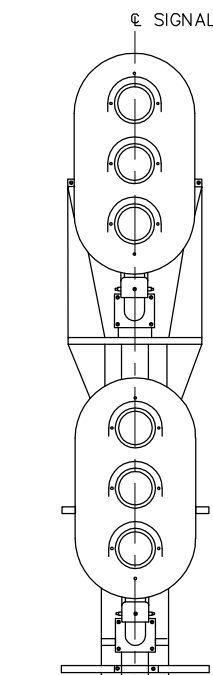


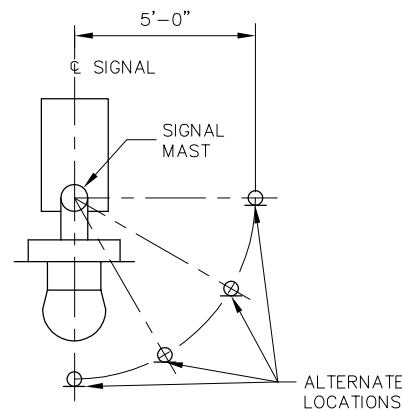
NOTES:

1. THIS STYLE OF LETTERS TO BE USED ON ALL RIGHT OF WAY SIGNS. PROPORTIONING OF LETTERS MAY BE MODIFIED TO SUIT AVAILABLE SPACE ON THE SIGN
2. LENGTH OF NET VALUE LINES ARE BASED ON THE AMOUNT OF SPACE SURROUNDING LETTERS. FOR BALANCED APPEARANCE, THE DISTANCE BETWEEN THESE LINES IN ANY WORD SHOULD BE CONSTANT

PENINSULA CORRIDOR JOINT POWERS BOARD					STANDARD DRAWINGS					CADD FILE NO.: SD-9101			
APPROVED BY:					 1250 San Carlos Avenue San Carlos, CA 94070					REV 0		DATE 093011	
 ENGINEERING MANAGER										 DEPUTY DIRECTOR OF ENGINEERING			
REV	DATE	BY	CHK	APP	DESCRIPTION	REV	DATE	BY	CHK	APP	STANDARD NO.: SD-9101		

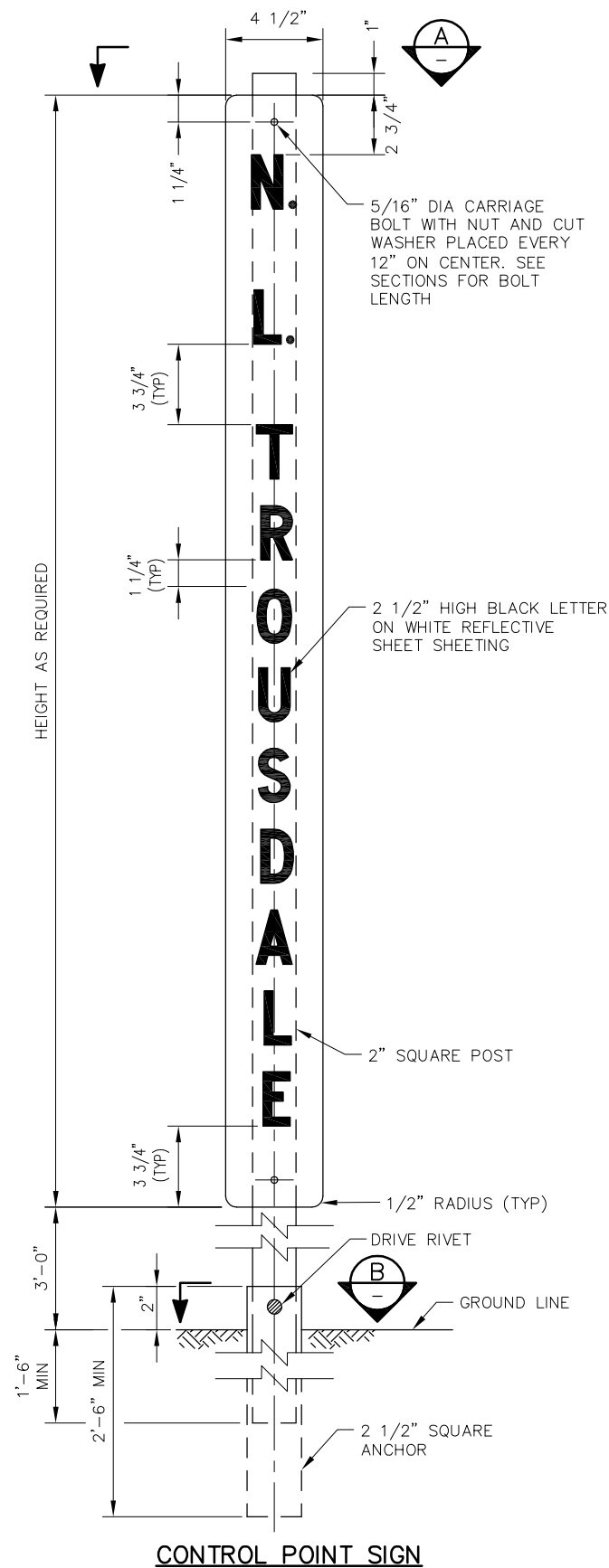


FRONT VIEW



TOP VIEW

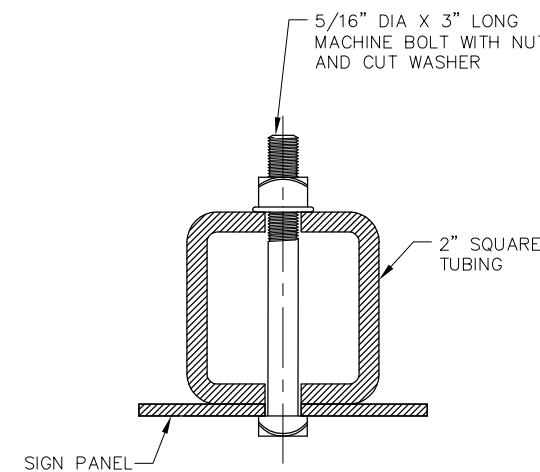
CONTROL POINT SIGN INSTALLATION



CONTROL POINT SIGN

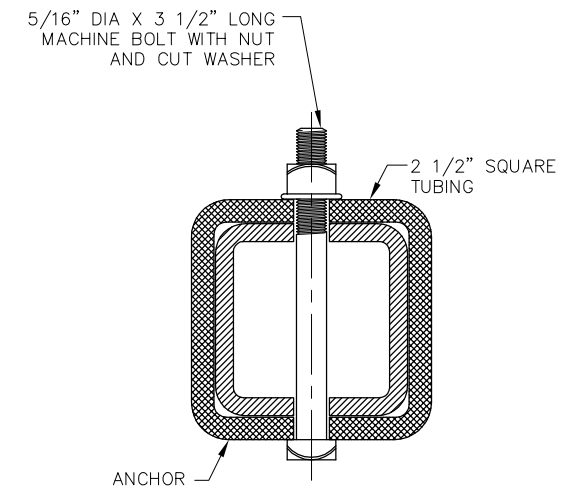
NOTES:

- SIGNS SHALL BE USED ON THE SIDE OF EACH TRACK ADJACENT TO SIGNAL CONTROLLING ENTRANCE TO CONTROL POINTS. USE THE FOLLOWING ABBREVIATIONS: N.=NORTH, S.=SOUTH AND L.=LIMITS
- WHERE DWARF SIGNALS ARE USED, PLACE CONTROL POINT SIGNS SUCH THAT THEY DO NOT OBSTRUCT SIGNALS
- THE SIGN PANELS SHALL BE METALLIC IN CONSTRUCTION; BAKED POWER-COATED FINISH, SILK-SCREENED AND SEALED NUMERALS/LETTERS, REFLECTIVE PAINT SURFACES, UV PROTECTION COATING, AND AN ANTI-GRAFFITI COATING. SUBMIT FOR CALTRAIN APPROVAL A FULL DESCRIPTION OF MATERIALS, COATING/FINISHES AND PROCESSES UTILIZED IN THE MANUFACTURE OF THE PROPOSED SIGN
 - SIGN PANELS: 1/8" THICK MILL FINISH ALUMINUM, ALCOG 6016-T6
 - NUMBERS AND LETTERS: BLACK COLOR
 - PAINT ALL SIDES WITH LINEAR POLYURETHANE
 - COAT SIGN FACE WITH ENGINEERING GRADE, PRESSURE SENSITIVE, RETRO-REFLECTIVE WHITE VINYL SHEETING
 - ANTI-GRAFFITI: COATING: EXTERIOR GRADE, SENSITIVE CLEAR MYLAR, 3M-1150
- FOR LETTERS AND NUMBERS SEE SD-9101
- ALL HARDWARE SHALL BE VANDAL RESISTANT, HOT DIPPED GALVANIZED
 - BOLTS: 2024-T4 ALLOY
 - POSTS: "U" CHANNEL. POST FURNISHED WITH 3/8" HOLES ON 1" CENTERS FOR THE ENTIRE LENGTH OF THE POST AND A POINTED END. DIMENSIONS 1 7/16", WIDTH 3 1/16", THICKNESS 11 GAUGE
 - NUTS: TAMPER RESISTANT, ALCOA OR ENGINEER APPROVED EQUAL
 - WASHERS: CUT WASHERS



THROUGH SIGN AND POST

A SECTION
SCALE: FULL





THROUGH POST AND ANCHOR


B SECTION
SCALE: FULL

REV	DATE	BY	CHK	APP	DESCRIPTION	REV	DATE	BY	CHK	APP	DESCRIPTION

PENINSULA CORRIDOR JOINT POWERS BOARD

APPROVED BY:



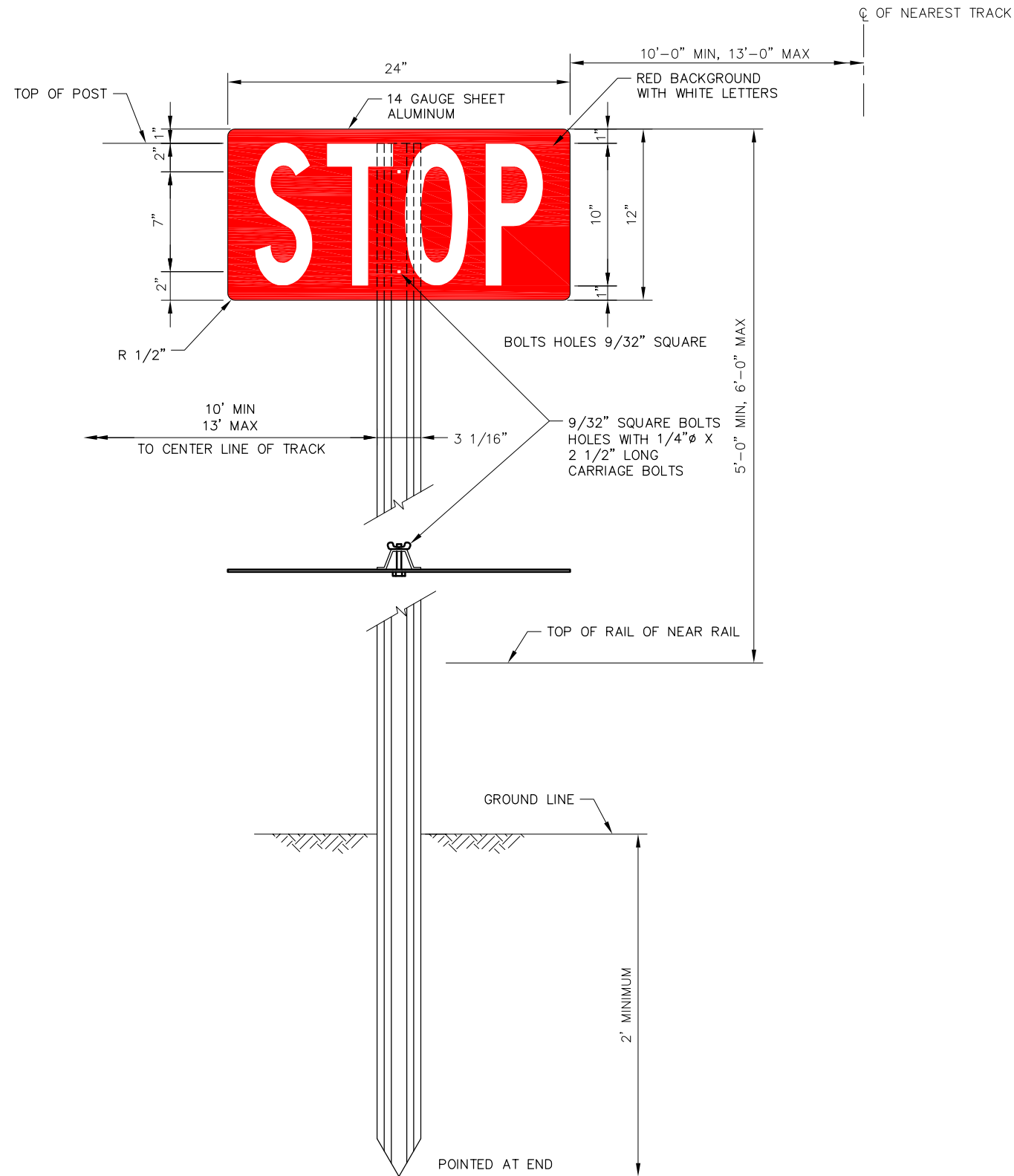
1250 San Carlos Avenue
San Carlos, CA 94070

STANDARD DRAWINGS

RIGHT-OF-WAY
SIGNAGE

CONTROL POINT SIGNS

CADD FILE NO.:	SD-9102
REV	DATE
0	093011
RIGHT-OF-WAY	
STANDARD NO.:	SD-9102



NOTES:

1. FLAGS SHALL BE MANUFACTURED FROM 14 GAUGE SHEET ALUMINUM MILL FINISH SIMILAR TO ALCOA 6061-T6. MOUNT WITH 3 3/8" X 2" HEXAGON BOLTS WITH WASHER AND WING NUT
2. FACE OF SIGNS SHALL BE COATED WITH WIDE ANGLE SILVER-WHITE REFLECTIVE SHEETING
3. POST SHALL BE HOT-DIPPED GALVANIZED STEEL (ASTM 526-690) "U" CHANNEL. POSTS FURNISHED WITH 3/8" HOLES ON 1" CENTERS FOR THE ENTIRE LENGTH OF THE POST AND A POINTED END. DIMENSIONS - DEPTH 1 7/16", WIDTH 3 1/16", THICKNESS 11 GAUGE. STANDARD LENGTH IS 10'-0", LONGER LENGTHS AVAILABLE
4. FOR LETTERS, SEE SD-9101

STOP SIGN

REV	DATE	BY	CHK	APP	DESCRIPTION


REV	DATE	BY	CHK	APP	DESCRIPTION

PENINSULA CORRIDOR JOINT POWERS BOARD

APPROVED BY:

Bernard Anzures *Steph Chen*

ENGINEERING MANAGER DEPUTY DIRECTOR OF ENGINEERING



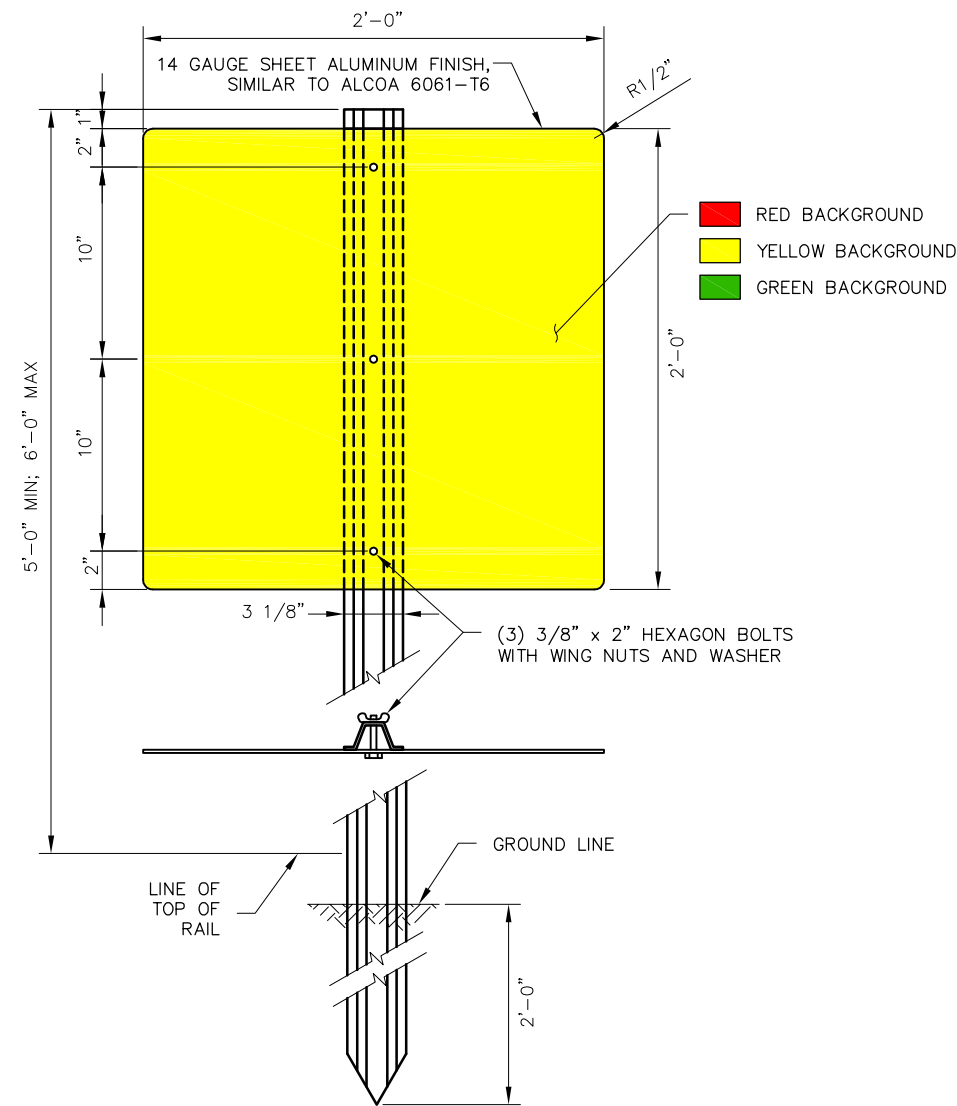
1250 San Carlos Avenue
San Carlos, CA 94070

STANDARD DRAWINGS

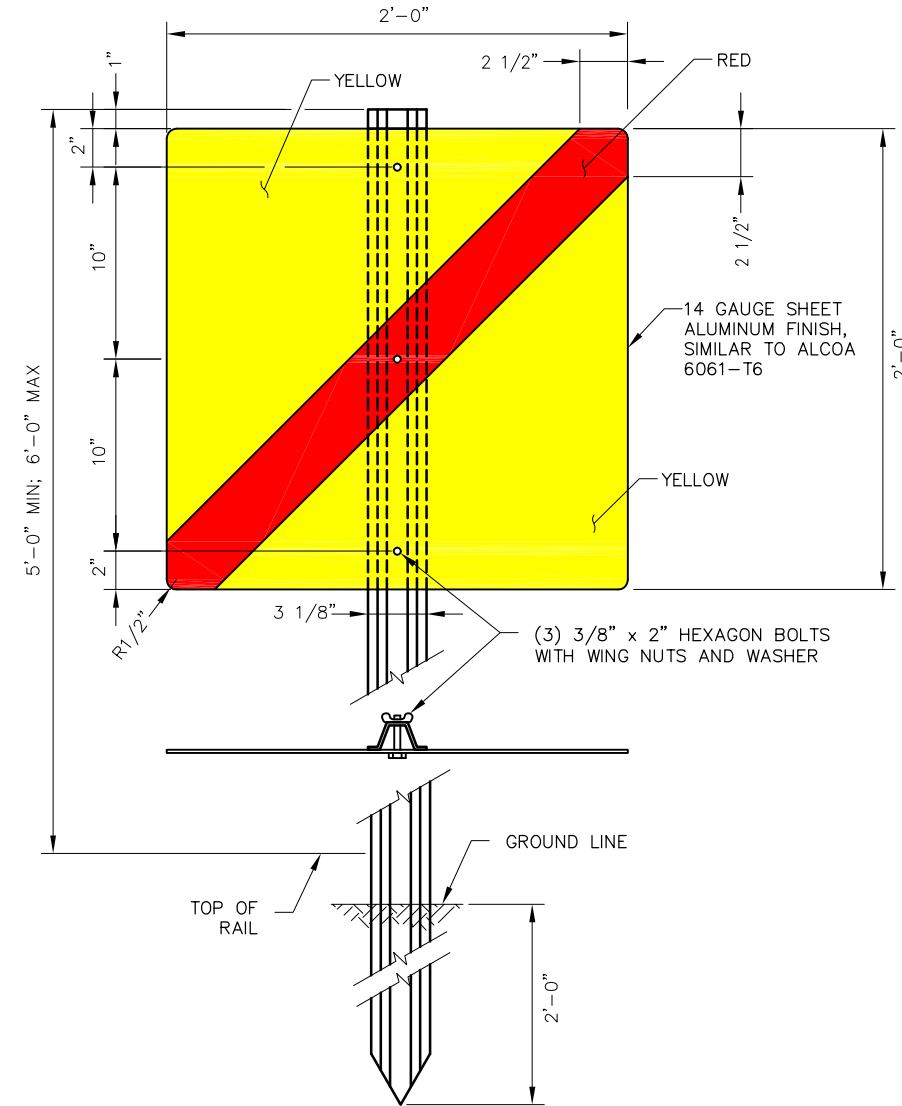
RIGHT-OF-WAY
SIGNAGE

STOP SIGN

CADD FILE NO.: SD-9104	
REV 0	DATE 093011
RIGHT-OF-WAY	
STANDARD NO.: SD-9104	



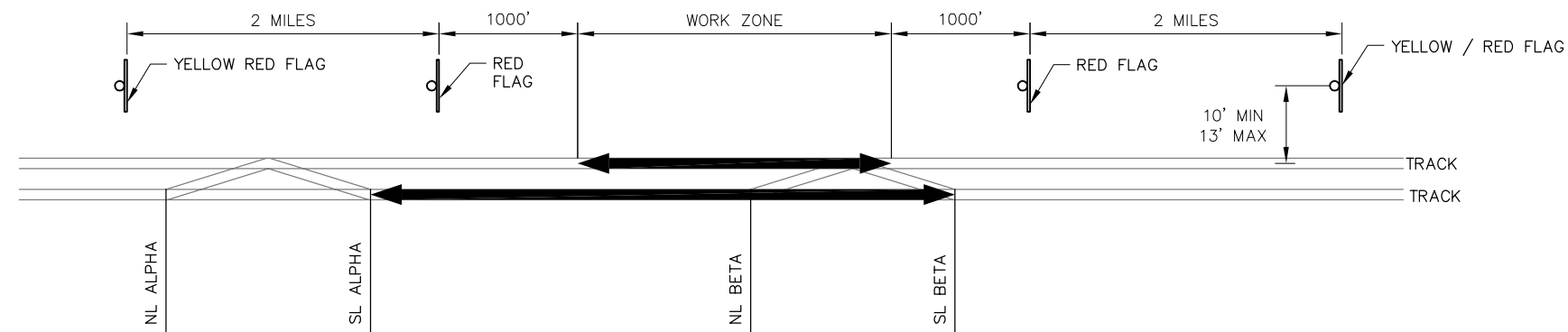
SOLID COLORED (RED, YELLOW, OR GREEN) FLAGS



YELLOW / RED FLAG

NOTES:

1. RED FLAGS SHALL BE DISPLAYED WHERE TRAINS MUST BE STOPPED IN ACCORDANCE WITH GENERAL CODE 5.4.7. FLAGS SHALL BE DISPLAYED TO THE RIGHT OF THE TRACK AS VIEWED FROM AN APPROACHING TRAIN, OR PLACED BETWEEN THE RAILS
2. YELLOW / RED FLAGS SHALL BE DISPLAYED 2 MILES BEFORE THE RESTRICTED AREA IN ACCORDANCE WITH GENERAL CODE 5.4.3. FLAGS SHALL BE DISPLAYED TO THE RIGHT OF THE TRACK AS VIEWED FROM AN APPROACHING TRAIN
3. YELLOW FLAGS SHALL BE DISPLAYED 2 MILES BEFORE THE RESTRICTED AREA IN ACCORDANCE WITH GENERAL CODE 5.4.3. FLAGS SHALL BE DISPLAYED TO THE RIGHT OF THE TRACK AS VIEWED FROM AN APPROACHING TRAIN
4. GREEN FLAGS SHALL BE DISPLAYED AT THE END OF THE LAST SPEED RESTRICTION IN ACCORDANCE WITH GENERAL CODE 5.4.5. FLAGS SHALL BE DISPLAYED TO THE RIGHT OF THE TRACK AS VIEWED FROM AN APPROACHING TRAIN
5. DISTANCE FROM CENTERLINE OF TRACK TO FLAG MUST NOT BE LESS THAN 10 FEET NOR MORE THAN 13 FEET
6. FLAGS SHALL BE MANUFACTURED FROM 14 GAUGE SHEET ALUMINUM MILL FINISH SIMILAR TO ALCOA 6061-T6. MOUNT WITH 3 3/8" X 2" HEXAGON BOLTS WITH WASHER AND WING NUT
7. FACE OF FLAGS SHALL BE COATED WITH WIDE ANGLE SCOTHLITE REFLECTIVE SHEETING
8. POST SHALL BE HOT DIPPED GALVANIZED STEEL (ASTM 526-690) "U" CHANNEL. POSTS FURNISHED WITH 3/8" HOLES ON 1" CENTERS FOR THE ENTIRE LENGTH OF THE POST AND A POINTED END. DIMENSIONS - DEPTH 1 7/16", WIDTH 3 1/16", THICKNESS 11 GAUGE





FORM B SIGN PLACEMENT & TRACK AND TIME LIMITS


REV	DATE	BY	CHK	APP	DESCRIPTION

PENINSULA CORRIDOR JOINT POWERS BOARD

APPROVED BY:

ENGINEERING MANAGER DEPUTY DIRECTOR OF ENGINEERING



1250 San Carlos Avenue
San Carlos, CA 94070

STANDARD DRAWINGS

RIGHT-OF-WAY
SIGNAGE

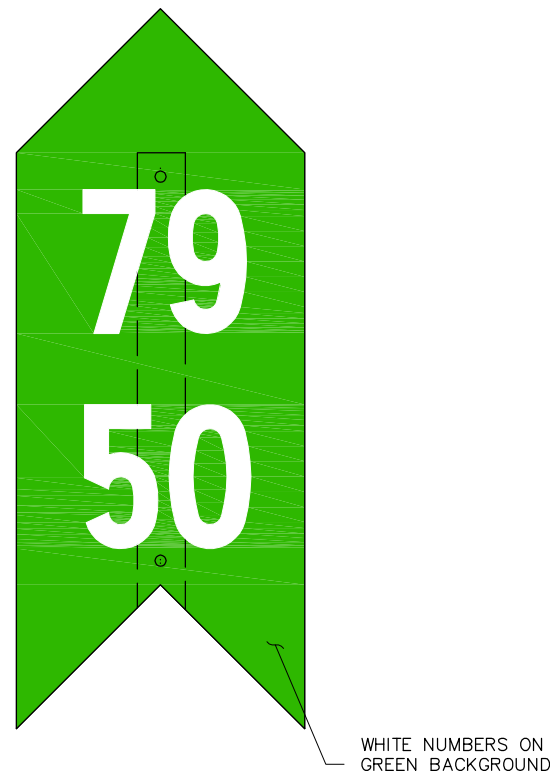
TEMPORARY TRACK CONDITIONS SIGNS

CADD FILE NO.: SD-9105

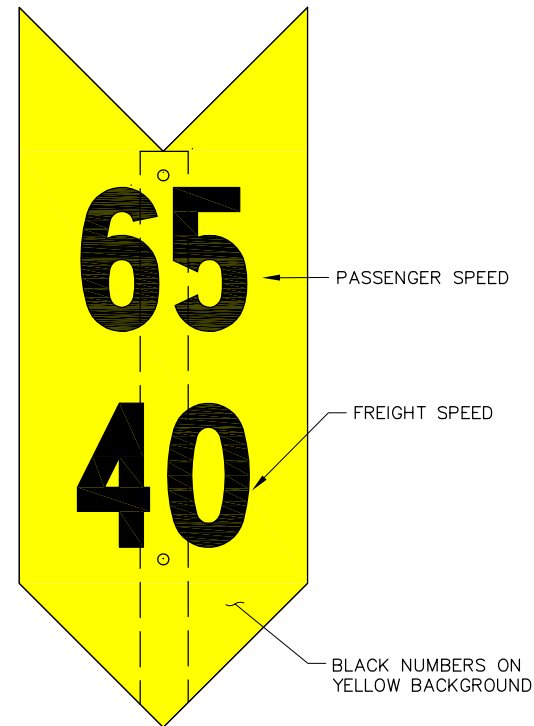
REV 0 DATE 093011

RIGHT-OF-WAY

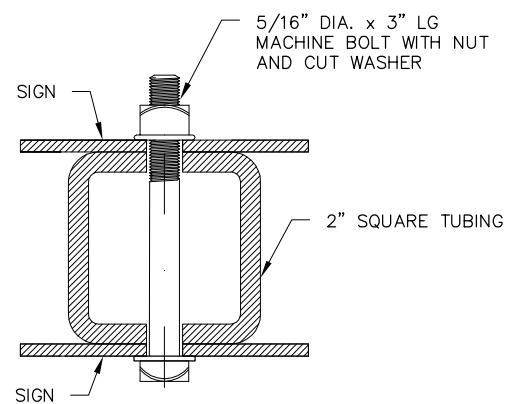
STANDARD NO.: SD-9105



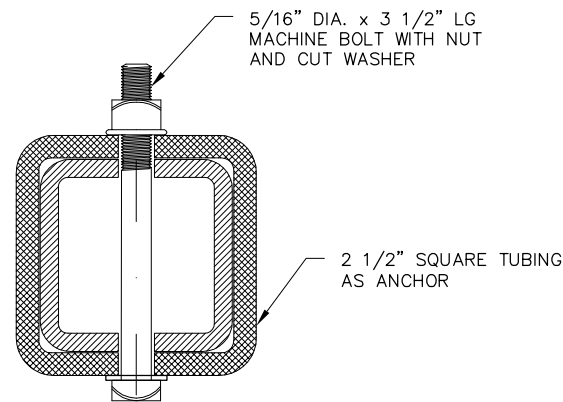
INCREASE SPEED SIGN



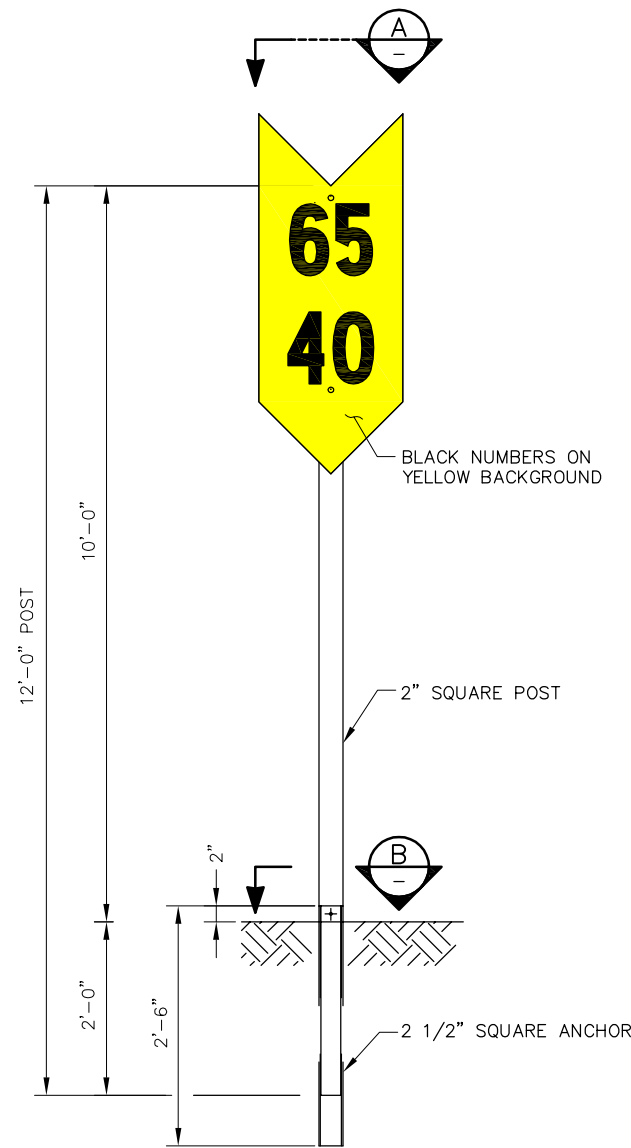
DECREASE SPEED SIGN



THROUGH SIGN AND POST



THROUGH POST AND ANCHOR



STEEL MOUNTING POST AND INSTALLATION DETAIL

BILL OF MATERIAL	
QUANTITY REQUIRED	ITEM
SPEED SIGN - COMPLETE	
2	PERMANENT SPEED SIGNS
1	2" x 2" x 11'-6" LONG SQUARE POST FOR SPEED SIGN
1	2 1/2" x 2 1/2" x 30" LONG SQUARE ANCHOR FOR SIGN POST
2	CARRIAGE BOLTS WITH NUTS AND WASHERS (GALVANIZED) PER SPECIFICATIONS BELOW

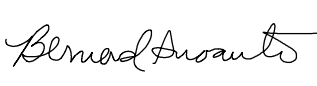

NOTES:

- ALL SIGNS SHALL BE PLACED ON RIGHT SIDE OF TRACK IN THE DIRECTION OF APPROACH TO SPEED CHANGE WITH THE NEAREST POINT OF SIGN TO BE AT MINIMUM OF 10 FEET FROM THE GAGE SIDE OF THE NEAREST RAIL. SIGNS SHALL BE PLACED ON OUTSIDE OF EACH TRACK. SIGNS SHALL BE PLACED ON BOTH SIDES OF THE POST FOR BI-DIRECTIONAL OPERATIONS
- REDUCED SPEED SIGNS SHALL BE LOCATED 2640 FEET (1/2 MILE) IN ADVANCE OF THE RESTRICTED TERRITORY AND SHALL INDICATE THE MAXIMUM SPEED PERMITTED AS SHOWN IN THE CURRENT TIME TABLE. PASSENGER SPEEDS SHALL BE SHOWN AT THE TOP AND FREIGHT AT THE BOTTOM
- INCREASE SPEED SIGNS SHALL BE PLACED TO INDICATE WHERE SPEED OF TRAIN MAY BE INCREASED. THIS SIGN SHALL NOT BE PLACED WHERE THERE IS LESS THAN 1/2 MILE BETWEEN THE END OF ONE SPEED RESTRICTION AND THE BEGINNING OF ANOTHER SPEED RESTRICTION
- ALL HARDWARE MUST BE VANDAL RESISTANT, AND HOT DIPPED GALVANIZED
- FOR LETTERS AND NUMBERS, SEE SD-9101
- THE SIGN PANELS SHALL BE METALLIC IN CONSTRUCTION: BAKED POWER-COATED FINISH, SILK-SCREENED AND SEALED NUMERALS/LETTERS, REFLECTIVE PAINT SURFACES, UV PROTECTION COATING, AND AN ANTI-GRAFFITI COATING. SUBMIT FOR CALTRAIN APPROVAL A FULL DESCRIPTION OF MATERIALS, COATING/FINISHES AND PROCESSES UTILIZED IN THE MANUFACTURE OF THE PROPOSED SIGN
 - SIGN PANELS: 0.135" THICK MILL FINISH ALUMINUM, ALCOG 6016-T6
 - NUMBERS AND LETTERS: BLACK COLOR
 - PAINT ALL SIDES WITH LINEAR POLYURETHANE
 - SHEETING SHALL BE RETRO-REFLECTIVE PRISMATIC, ASTM 4956 CLASS III OR HIGHER
 - ANTI-GRAFFITI: COATING: EXTERIOR GRADE, SENSITIVE CLEAR MYLAR, 3M-1160


REV	DATE	BY	CHK	APP	DESCRIPTION	REV	DATE	BY	CHK	APP	DESCRIPTION

PENINSULA CORRIDOR JOINT POWERS BOARD

APPROVED BY:

ENGINEERING MANAGER DEPUTY DIRECTOR OF ENGINEERING



1250 San Carlos Avenue
San Carlos, CA 94070

STANDARD DRAWINGS

RIGHT-OF-WAY SIGNAGE

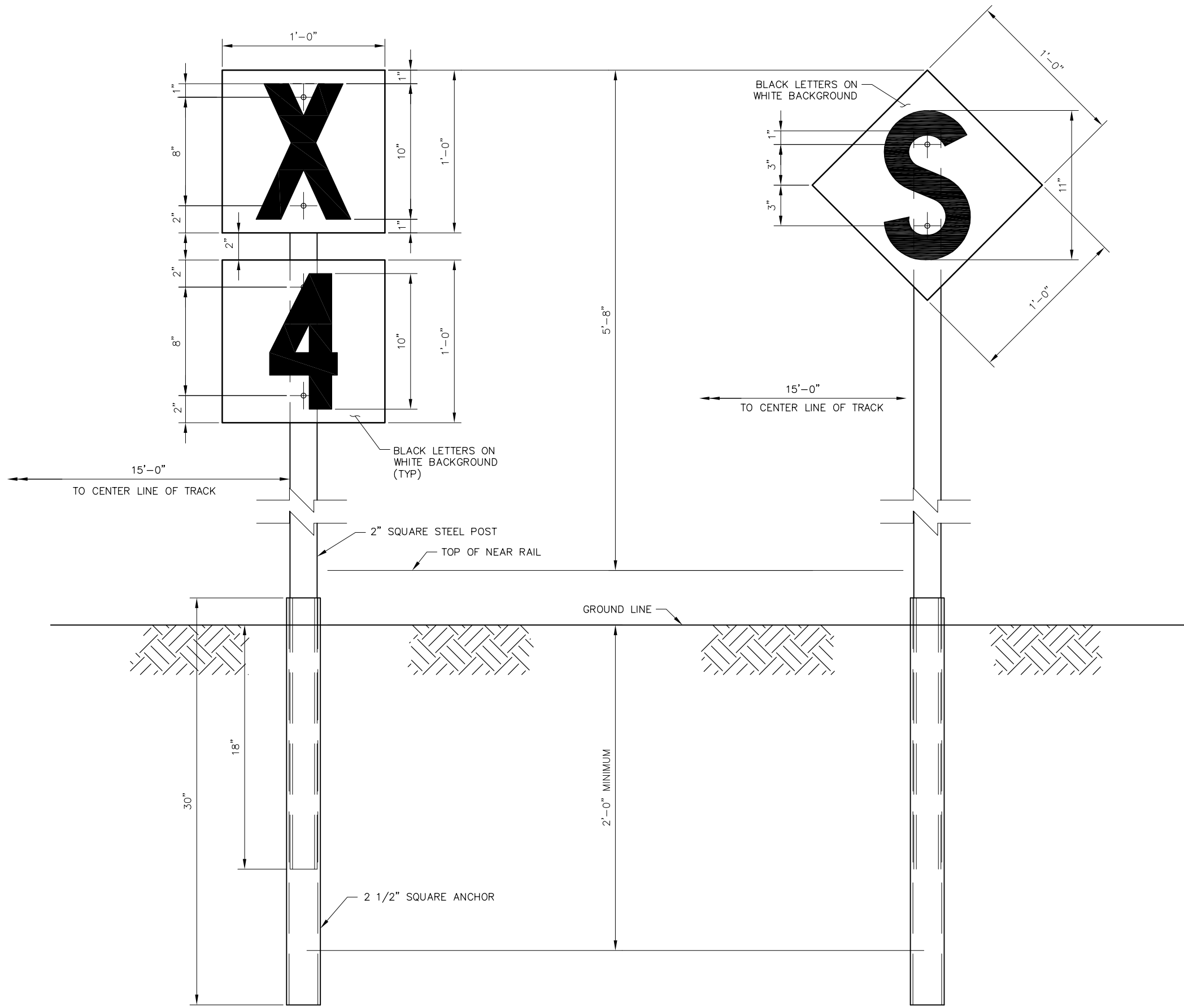
PERMANENT SPEED SIGN

CADD FILE NO.: SD-9106

REV 0 DATE 093011

RIGHT-OF-WAY

STANDARD NO.: SD-9106



NOTES:

- SIGN SHALL BE LOCATED TO THE RIGHT OF THE TRACK AS VIEWED FROM AN APPROACHING TRAIN
- SIGN POST SHALL BE LOCATED 15 FEET (10' MIN; 20' MAX) FROM THE CENTER LINE OF TRACK. POSTS SHALL BE PLACED TO THE EAST OF MAIN TRACKS 1 OR 3 AND WEST OF MAIN TRACKS 2 OR 4.
- WHISTLING BOARD SHALL BE PLACED AS NEARLY AS PRACTICABLE ONE QUARTER MILE (1320') DISTANT FROM CROSSING OR OTHER OBSTRUCTION. WHERE THERE ARE MULTIPLE PUBLIC CROSSINGS NOT MORE THAN ONE QUARTER MILE (1320') APART, SIGN BEARING LETTER "X" LOCATED ONE QUARTER MILE (1320') IN ADVANCE OF FIRST CROSSING SHALL DISPLAY A FIGURE WHICH REPRESENTS THE NUMBER OF CROSSINGS INVOLVED
- STATION ONE MILE SIGN SHALL BE PLACED ONE MILE (5280') IN ADVANCE OF A PASSENGER STATION
- THE SIGN PANELS SHALL BE METALLIC IN CONSTRUCTION; BAKED POWER-COATED FINISH, SILK-SCREENED AND SEALED NUMERALS/LETTERS, REFLECTIVE PAINT SURFACES, UV PROTECTION COATING, AND AN ANTI-GRAFFITI COATING. SUBMIT FOR CALTRAIN APPROVAL A FULL DESCRIPTION OF MATERIALS, COATING/FINISHES AND PROCESSES UTILIZED IN THE MANUFACTURE OF THE PROPOSED SIGN
 - SIGN PANELS: 0.135" THICK MILL FINISH ALUMINUM, ALCOG 6016-T6
 - NUMBERS AND LETTERS: BLACK COLOR
 - PAINT ALL SIDES WITH LINEAR POLYURETHANE
 - SHEETING SHALL BE RETRO-REFLECTIVE PRISMATIC, ASTM 4956 CLASS III OR HIGHER
 - ANTI-GRAFFITI: COATING: EXTERIOR GRADE, SENSITIVE CLEAR MYLAR, 3M-1160
- HARDWARE: ALL HARDWARE SHALL BE VANDAL RESISTANT, AND HOT DIPPED GALVANIZED
 - BOLTS: 5/16" X 2 3/4" LONG ALUMINUM CARRIAGE BOLTS, 2024-T4 ALLOY.
 - NUTS: TAMPER RESISTANT, ALCOA OR ENGINEER APPROVED EQUAL
 - WASHERS: FLAT ALUMINUM
 - POSTS: "U" CHANNEL POST FURNISHED WITH 3/8" HOLES ON 1" CENTERS FOR THE ENTIRE LENGTH OF THE POST
- FOR TEXT AND NUMBERS, SEE SD-9101

REV	DATE	BY	CHK	APP	DESCRIPTION

PENINSULA CORRIDOR JOINT POWERS BOARD

APPROVED BY:




ENGINEERING MANAGER DEPUTY DIRECTOR OF ENGINEERING



1250 San Carlos Avenue
San Carlos, CA 94070

STANDARD DRAWINGS

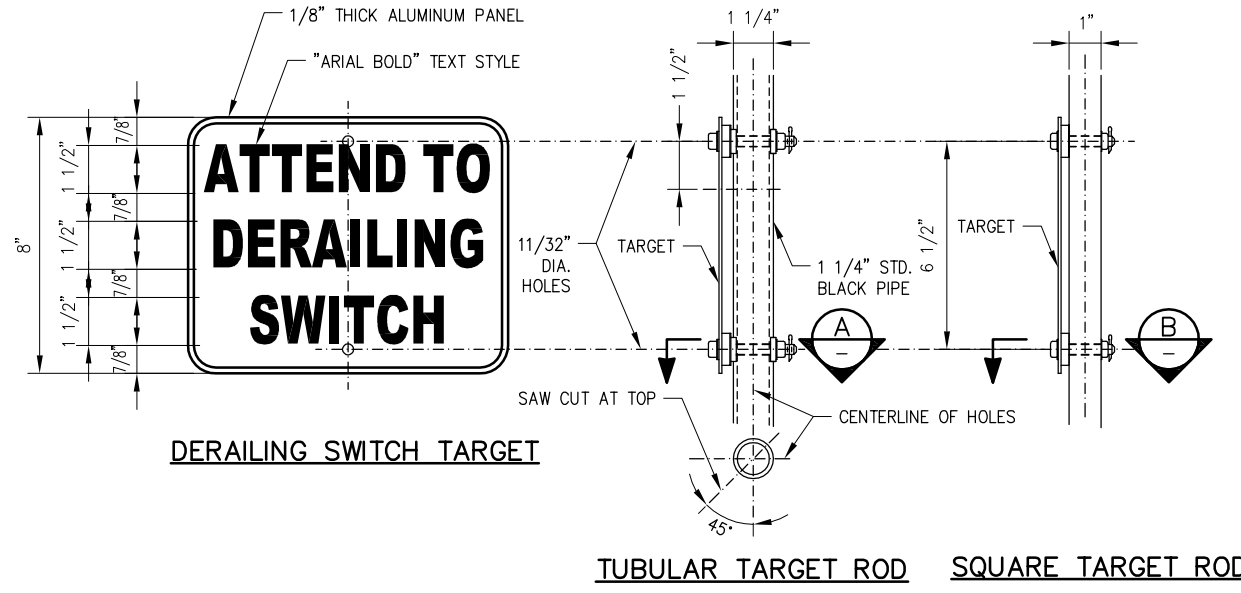
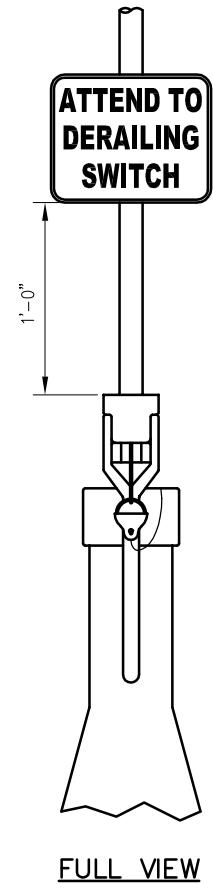
RIGHT-OF-WAY
SIGNAGE
WHISTLING BOARD AND
STATION ONE MILE SIGN

CADD FILE NO.: SD-9107

REV 0 DATE 093011

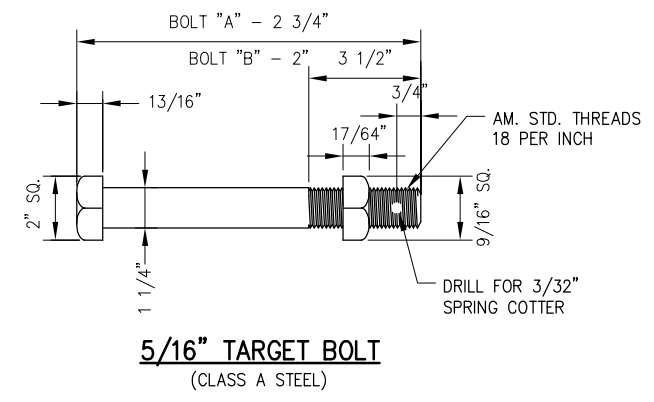
RIGHT-OF-WAY

STANDARD NO.: SD-9107

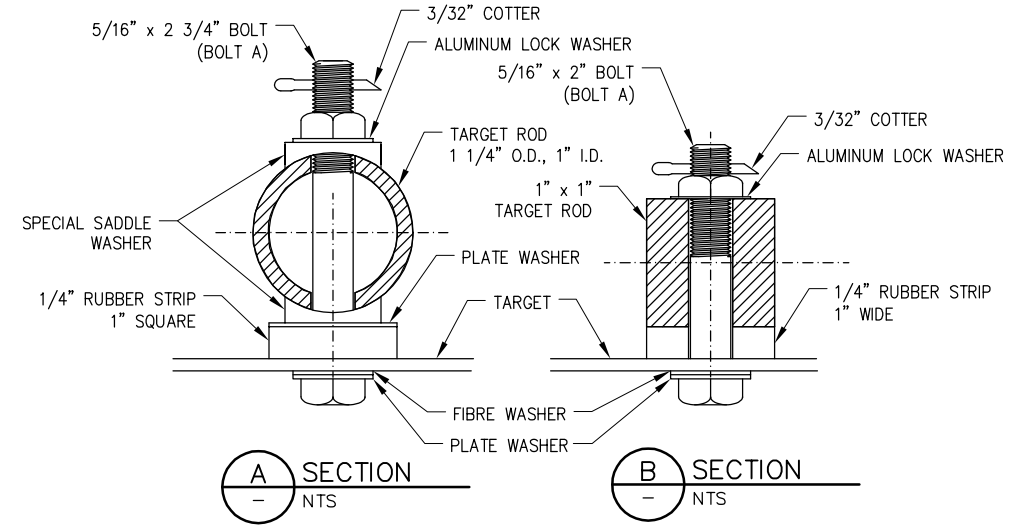


DERAILING SWITCH TARGET

TUBULAR TARGET ROD SQUARE TARGET ROD

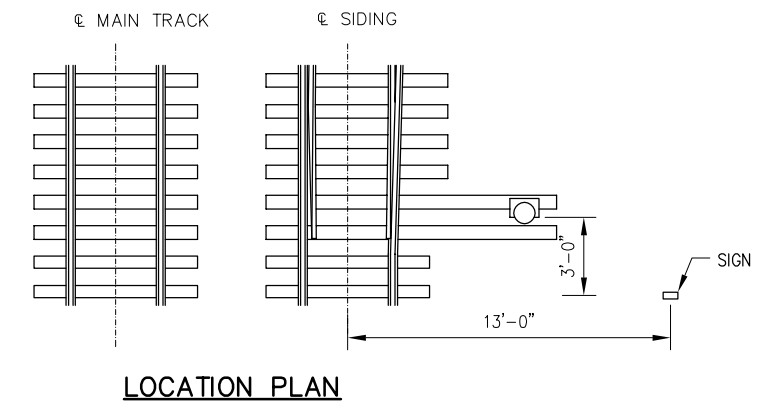


5/16" TARGET BOLT (CLASS A STEEL)

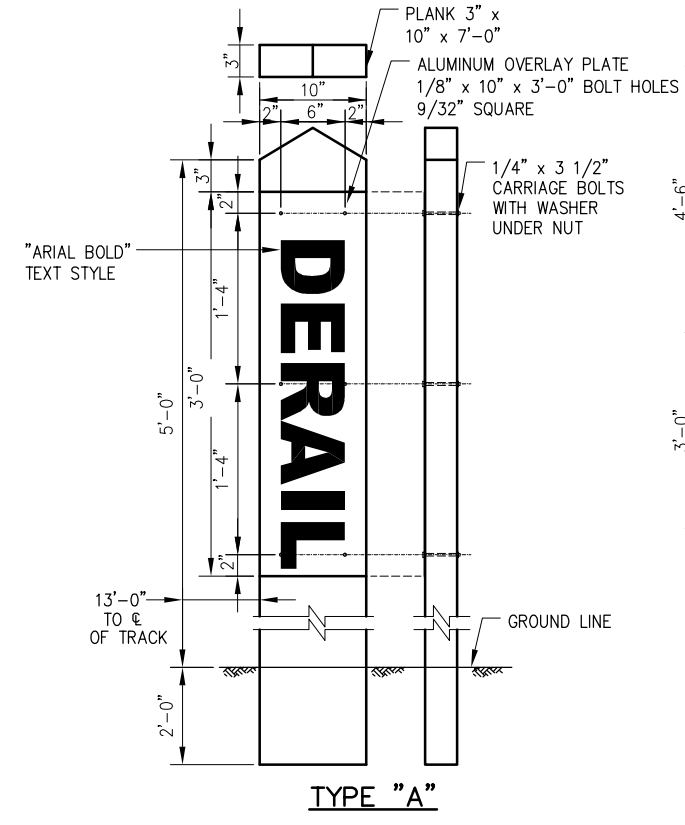


A SECTION NTS

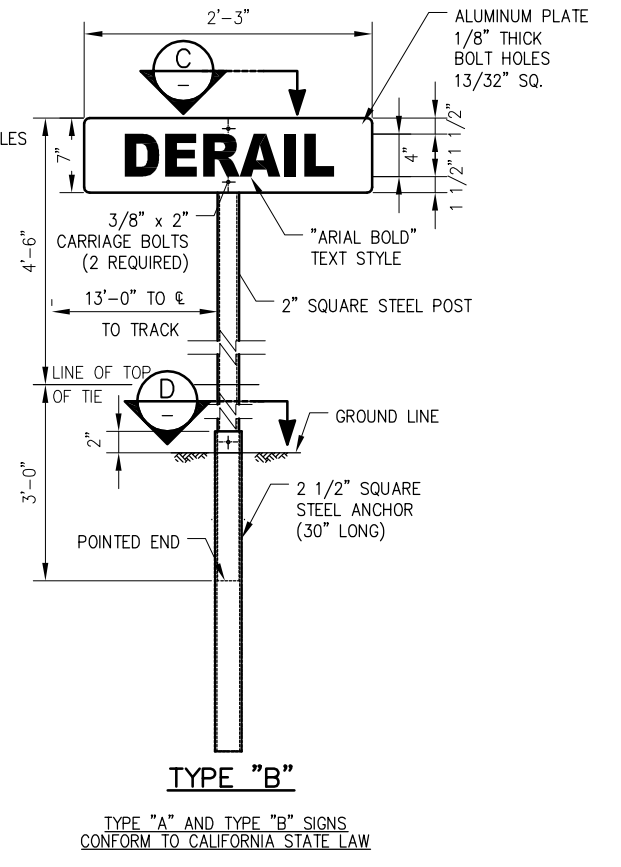
B SECTION NTS



LOCATION PLAN

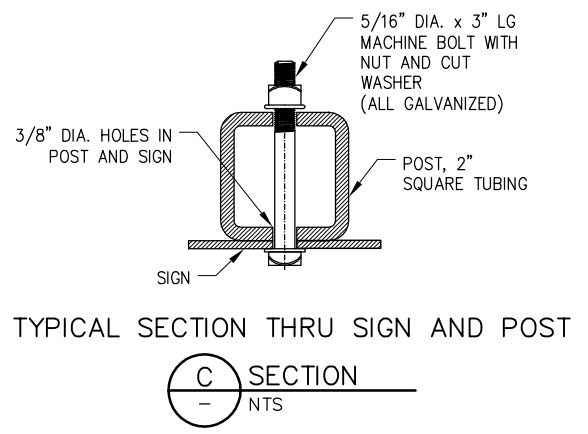


TYPE "A"



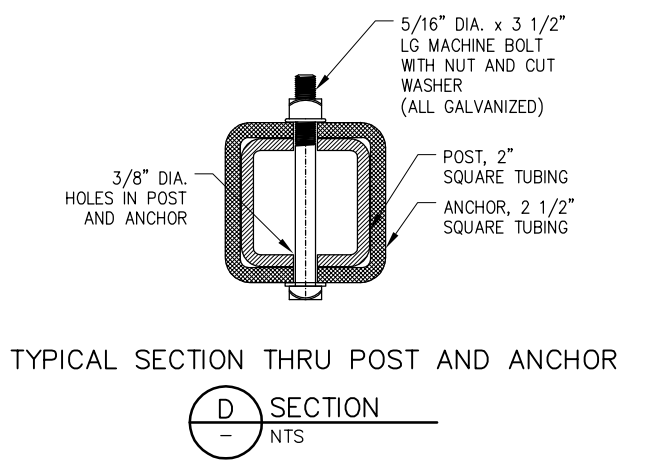
TYPE "B"

TYPE "A" AND TYPE "B" SIGNS CONFORM TO CALIFORNIA STATE LAW



TYPICAL SECTION THRU SIGN AND POST

C SECTION NTS





TYPICAL SECTION THRU POST AND ANCHOR


D SECTION NTS

REV	DATE	BY	CHK	APP	DESCRIPTION	REV	DATE	BY	CHK	APP	DESCRIPTION

PENINSULA CORRIDOR JOINT POWERS BOARD

APPROVED BY:



1250 San Carlos Avenue
San Carlos, CA 94070

STANDARD DRAWINGS

RIGHT-OF-WAY
SIGNAGE
ATTEND TO DERAILING
SWITCH AND DERAIL SIGNS

CADD FILE NO.: SD-9108

REV 0 DATE 093011

RIGHT-OF-WAY

STANDARD NO.: SD-9108