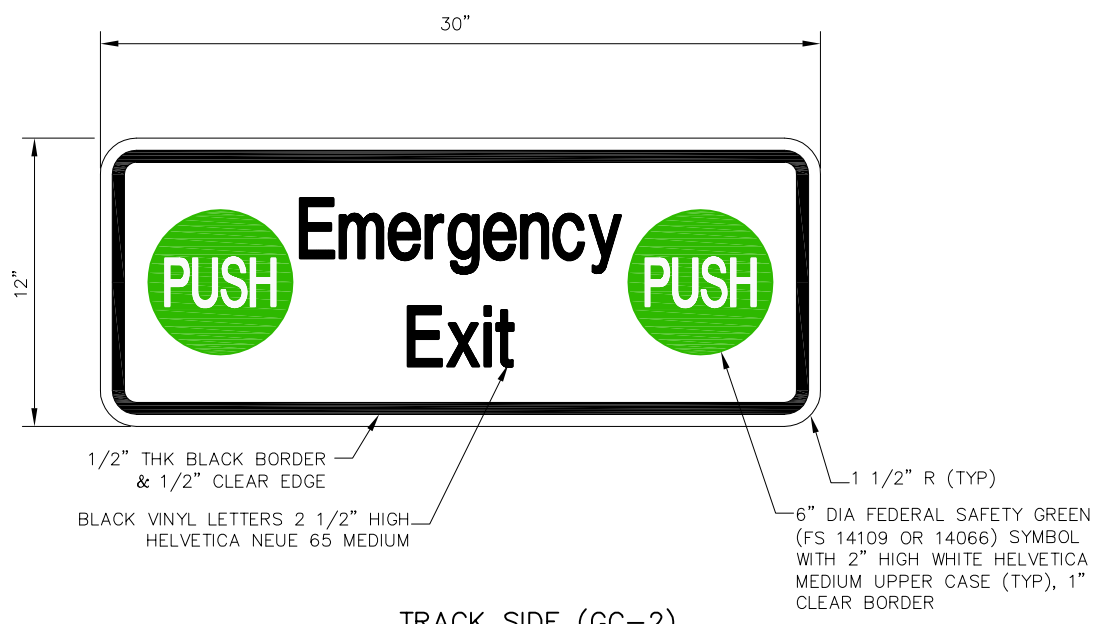
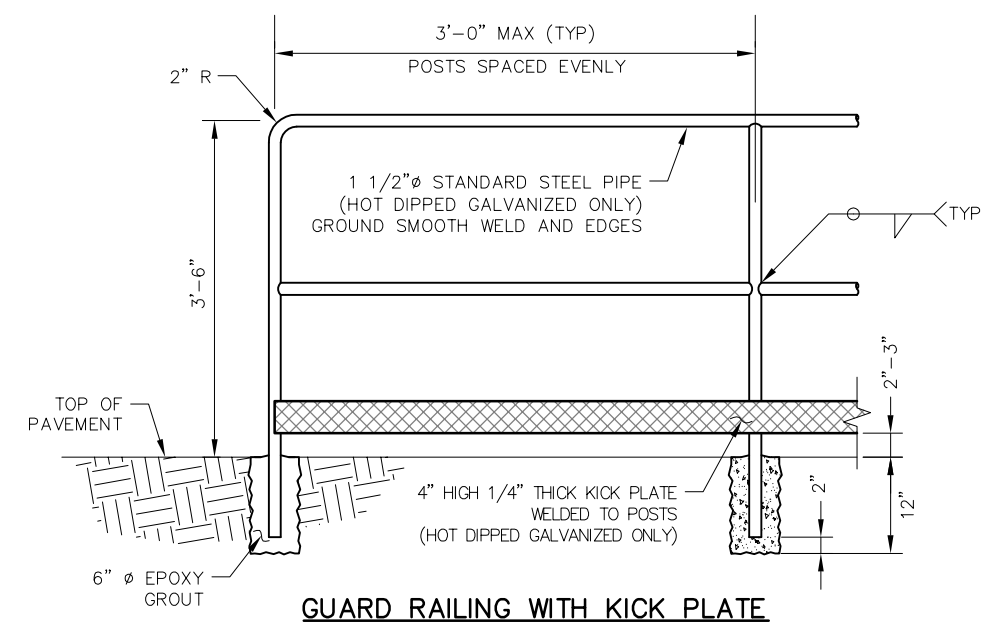


OTHER SIDE (GC-1)



TRACK SIDE (GC-2)

SIGNS



NOTES:

1. SEE SD-3300 FOR SIGN REQUIREMENTS AND SPECIFICATIONS
2. SIGN PANELS: 0.120" THICK REFLECTORIZED WHITE ALUMINUM

REV	DATE	BY	CHK	APP	DESCRIPTION

PENINSULA CORRIDOR JOINT POWERS BOARD

APPROVED BY:






1250 San Carlos Avenue
San Carlos, CA 94070

STANDARD DRAWINGS

GRADE CROSSINGS
 PEDESTRIAN CROSSING
 GATE, RAILING, AND SIGNAGE
 SHEET 2 OF 2

CADD FILE NO.: SD-7006	
REV 0	DATE 093011
GRADE CROSSINGS	
STANDARD NO.: SD-7006	