

- NOTES:**
1. THE STANDARDS ARE FOR GUIDANCE AND TO INDICATE INTENT. SINCE THE ACTUAL DESIGN WILL TYPICALLY BE SITE SPECIFIC, COLLABORATE CLOSELY WITH CALTRAIN DURING DESIGN.
 2. FOLLOW CALIFORNIA MUTCD FOR STRIPING, MARKING, AND OTHER WARNING DEVICES. ADDITIONAL DEVICE MAY BE REQUIRED BY THE LOCAL AGENCY.
 3. TO MINIMIZE CROSSING DISTANCE, THE PEDESTRIAN GATE SHALL BE PARALLEL TO TRACKS. ALIGN WITH EITHER SIDE OF THE VEHICULAR GATE COUNTER WEIGHT THAT PROVIDES 12' MIN (TRACK CENTER TO PED SIGNAL MAST).
 4. REFERENCED DRAWINGS:
 - FOR SWING GATE AND GUARD RAILING: SEE SD-7005 AND SD-7006
 - FOR "NO TRESPASSING/SUICIDE PREVENTION" SIGNAGE (RW-4): SEE SD-3352
 - FOR SIGNS (GC-1 & GC-2) MOUNTED ON THE SWING GATE: SEE SD-7006
 - FOR WARNING TACTILE: SEE SD-3501 EXCEPT IT IS IN LINE DOME DESIGN. ALIGN GROOVE WITH DIRECTION OF TRAVEL PATH AS REQUIRED
 5. FENCE:
 - EXTEND TO EXISTING ADJACENT STRUCTURES (BUILDINGS, ETC.) TO CLOSE ANY GAPS.
 - IN ABSENCE OF EXISTING ROW FENCE, EXTEND 50 FT FROM CROSSING. MATCH EXISTING ON FENCE TYPE, HEIGHT, AND ALIGNMENT.
 7. USE 4 FT WHEN THE COUNTER WEIGHTS ARE OBLONG TYPE (AS OPPOSED TO SQUARE). THIS TYPICALLY OCCURS WHEN THE ROADWAY IS OF 2 LANES OR MORE IN EACH DIRECTION. FIELD VERIFY (6" ± 1" WHEN GATE IS DOWN AND COUNTER WEIGHTS ARE UP)
 8. FOR WARNING TACTILE: SEE SD-3500 AND SD-3501 FOR DETAILS

NOT APPLICABLE FOR FOUR-QUAD GATE SYSTEM

REV	DATE	BY	CHK	APP	DESCRIPTION

PENINSULA CORRIDOR JOINT POWERS BOARD

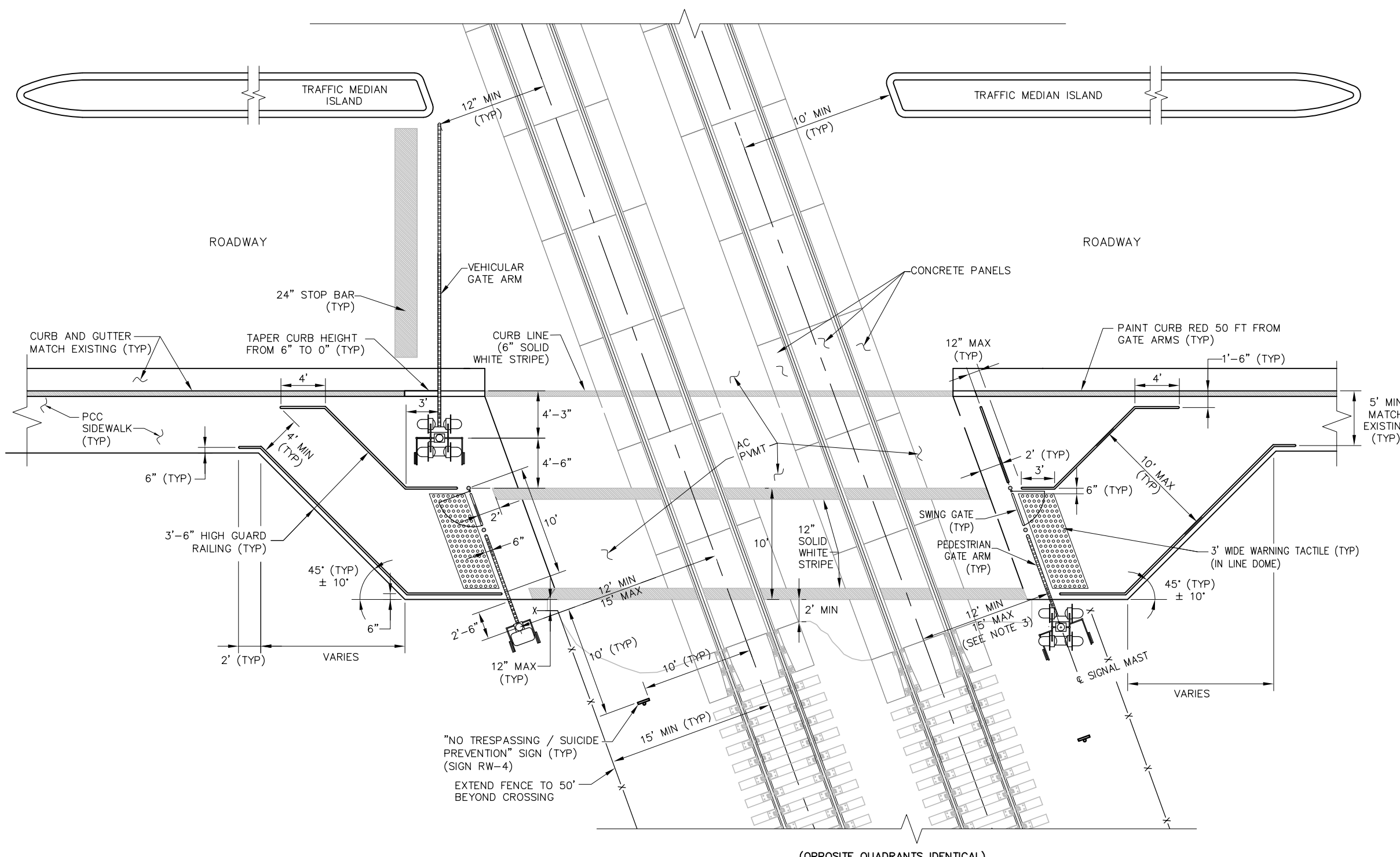
APPROVED BY:




ENGINEERING MANAGER DEPUTY DIRECTOR OF ENGINEERING



STANDARD DRAWINGS		CADD FILE NO.:
GRADE CROSSINGS SIDEWALKS AND CROSSINGS PEDESTRIAN SIDEWALK AT ACUTE ANGLE INTERSECTION		SD-7002
REV	DATE	
0	093011	
STANDARD NO.:		SD-7002



- NOTES:**
1. THE STANDARDS ARE FOR GUIDANCE AND TO INDICATE INTENT. SINCE THE ACTUAL DESIGN WILL TYPICALLY BE SITE SPECIFIC, COLLABORATE CLOSELY WITH CALTRAIN DURING DESIGN.
 2. FOLLOW CALIFORNIA MUTCD FOR STRIPING, MARKING, AND OTHER WARNING DEVICES. ADDITIONAL DEVICE MAY BE REQUIRED BY THE LOCAL AGENCY.
 3. TO MINIMIZE CROSSING DISTANCE, THE PEDESTRIAN GATE SHALL BE PARALLEL TO TRACKS. ALIGN WITH EITHER SIDE OF THE VEHICULAR GATE COUNTER WEIGHT THAT PROVIDES 12' MIN (TRACK CENTER TO PED SIGNAL MAST).
 4. REFERENCED DRAWINGS:
 - FOR SWING GATE AND GUARD RAILING: SEE SD-7005 AND SD-7006
 - FOR "NO TRESPASSING/SUICIDE PREVENTION" SIGNAGE (RW-4): SEE SD-3352
 - FOR SIGNS (GC-1 & GC-2) MOUNTED ON THE SWING GATE: SEE SD-7006
 - FOR WARNING TACTILE: SEE SD-3501 EXCEPT IT IS IN LINE DOME DESIGN. ALIGN GROOVE WITH DIRECTION OF TRAVEL PATH AS REQUIRED
 5. FENCE:
 - EXTEND TO EXISTING ADJACENT STRUCTURES (BUILDINGS, ETC.) TO CLOSE ANY GAPS.
 - IN ABSENCE OF EXISTING ROW FENCE, EXTEND 50 FT FROM CROSSING. MATCH EXISTING ON FENCE TYPE, HEIGHT, AND ALIGNMENT.
 7. USE 4 FT WHEN THE COUNTER WEIGHTS ARE OBLONG TYPE (AS OPPOSED TO SQUARE). THIS TYPICALLY OCCURS WHEN THE ROADWAY IS OF 2 LANES OR MORE IN EACH DIRECTION. FIELD VERIFY (6" ± 1" WHEN GATE IS DOWN AND COUNTER WEIGHTS ARE UP)
 8. FOR WARNING TACTILE: SEE SD-3500 AND SD-3501 FOR DETAILS

(OPPOSITE QUADRANTS IDENTICAL)

NOT APPLICABLE FOR FOUR-QUAD GATE SYSTEM

REV	DATE	BY	CHK	APP	DESCRIPTION

PENINSULA CORRIDOR JOINT POWERS BOARD

APPROVED BY:

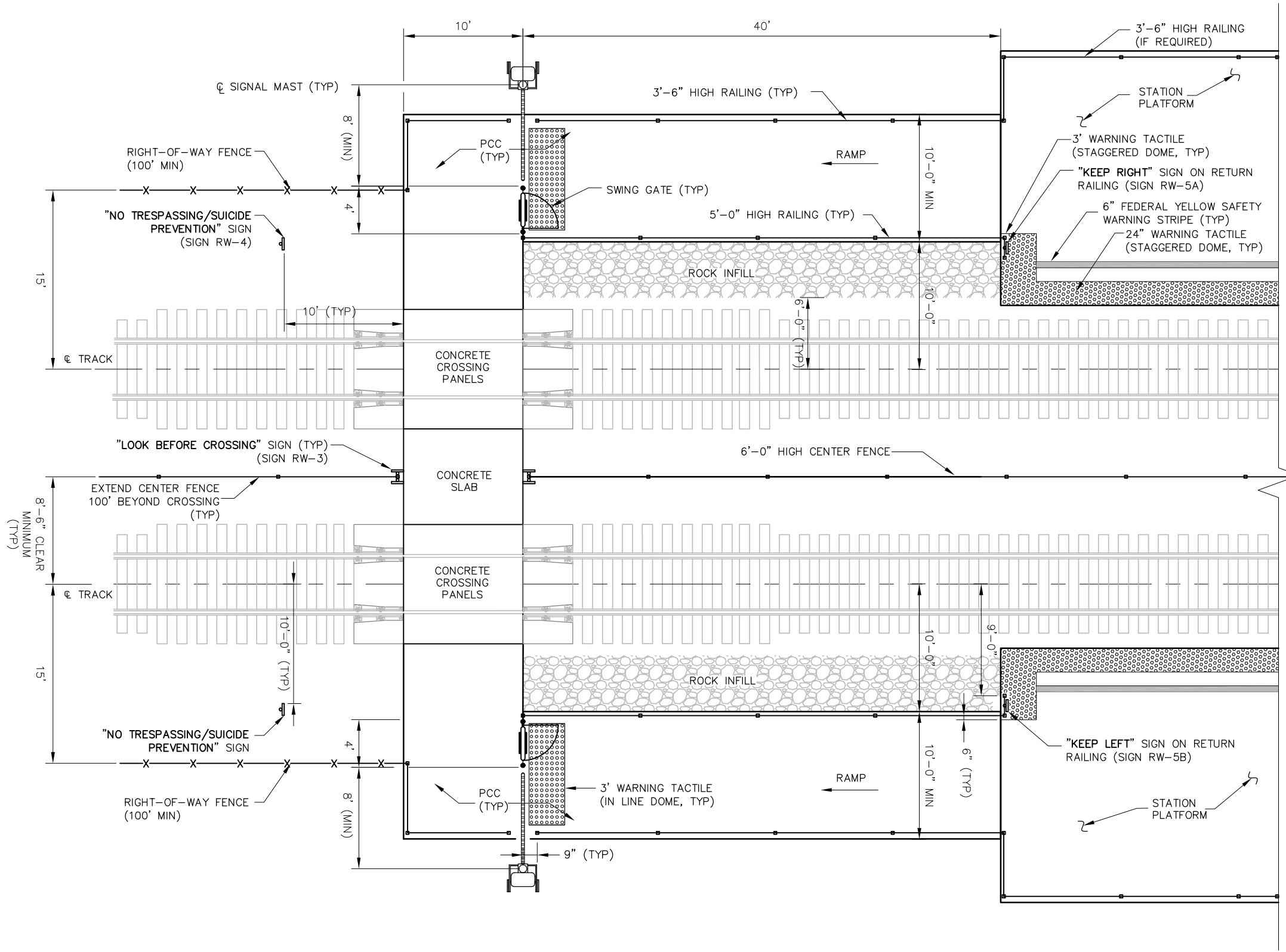



ENGINEERING MANAGER DEPUTY DIRECTOR OF ENGINEERING



1250 San Carlos Avenue
 San Carlos, CA 94070

STANDARD DRAWINGS		CADD FILE NO.:
GRADE CROSSINGS SIDEWALKS AND CROSSINGS PEDESTRIAN SIDEWALK AT OBTUSE ANGLE INTERSECTION		SD-7003
REV	DATE	
0	093011	
STANDARD NO.:		SD-7003



- NOTES:**
1. THE STANDARDS ARE FOR GUIDANCE AND TO INDICATE INTENT. SINCE THE ACTUAL DESIGN WILL TYPICALLY BE SITE SPECIFIC, COLLABORATE CLOSELY WITH CALTRAIN DURING DESIGN.
 2. FOLLOW CALIFORNIA MUTCD FOR STRIPING, MARKING, AND OTHER WARNING DEVICES. ADDITIONAL DEVICE MAY BE REQUIRED BY THE LOCAL AGENCY.
 3. REFERENCED DRAWINGS:
 - FOR SWING GATE AND GUARD RAILING: SEE SD-7005 AND SD-7006
 - FOR "NO TRESPASSING/SUICIDE PREVENTION" SIGNAGE (RW-4): SEE SD-3352
 - FOR "LOOK BEFORE CROSSING" SIGN: SEE SD-3307
 - FOR SIGNS (GC-1 & GC-2) MOUNTED ON THE SWING GATE: SEE SD-7006
 - FOR WARNING TACTILE: SEE SD-3501 EXCEPT IT IS IN LINE DOME DESIGN. ALIGN GROOVE WITH DIRECTION OF TRAVEL PATH AS REQUIRED
 4. ROCK INFILL: 12" DEEP, TOP ELEVATION FLUSH WITH TOP OF TIE
 5. ROCK INFILL: CRUSHED ROCK, 6" NOMINAL SIZE, ANGULAR, HARD, AND DURABLE PARENT
 6. FOR WARNING TACTILE: SEE SD-3500 AND SD-3501 FOR DETAILS

REV	DATE	BY	CHK	APP	DESCRIPTION

PENINSULA CORRIDOR JOINT POWERS BOARD

APPROVED BY:

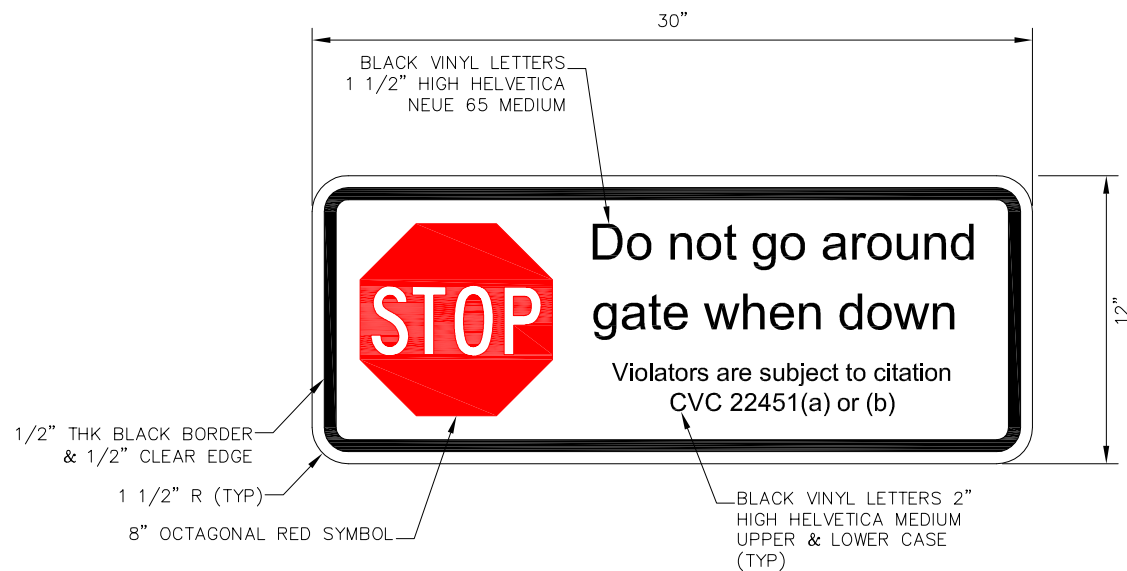



ENGINEERING MANAGER DEPUTY DIRECTOR OF ENGINEERING

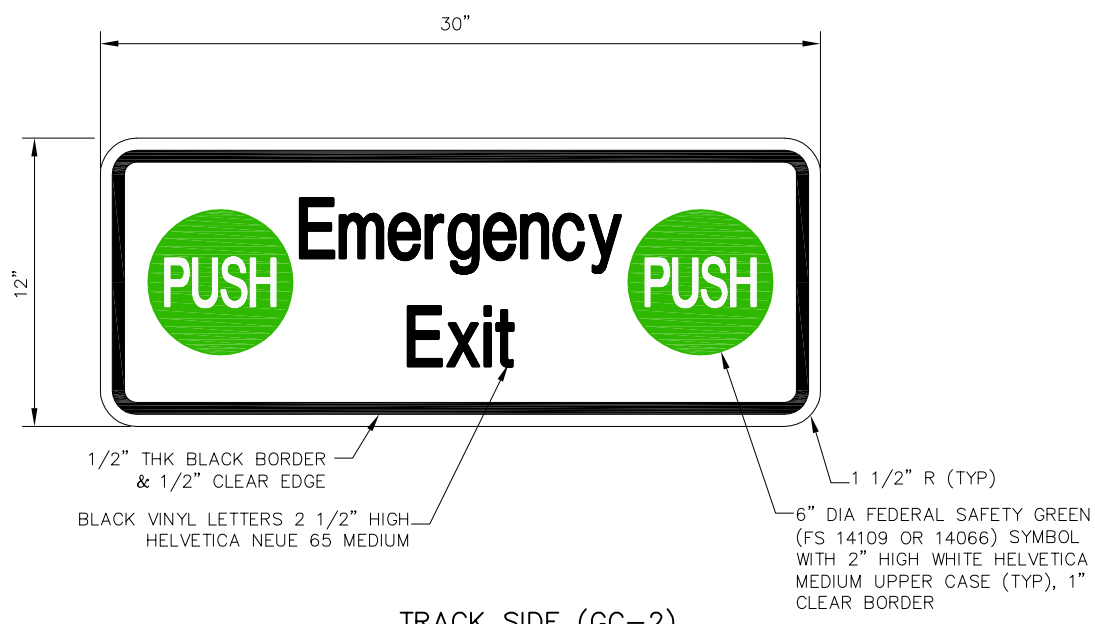


1250 San Carlos Avenue
 San Carlos, CA 94070

STANDARD DRAWINGS		CADD FILE NO.:
GRADE CROSSINGS SIDEWALKS AND CROSSINGS PEDESTRIAN CROSSING AT STATIONS CROSSINGS PATHWAY LAYOUT		SD-7004
REV	DATE	
0	093011	
STANDARD NO.:		
SD-7004		

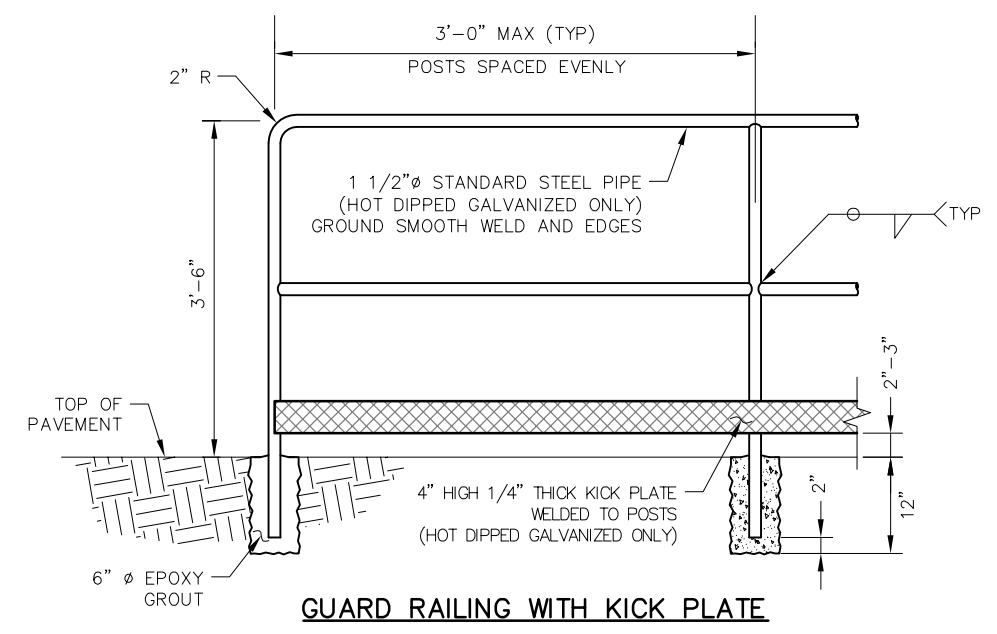


OTHER SIDE (GC-1)



TRACK SIDE (GC-2)

SIGNS






GUARD RAILING WITH KICK PLATE

NOTES:

1. SEE SD-3300 FOR SIGN REQUIREMENTS AND SPECIFICATIONS
2. SIGN PANELS: 0.120" THICK REFLECTORIZED WHITE ALUMINUM

REV	DATE	BY	CHK	APP	DESCRIPTION	REV	DATE	BY	CHK	APP	DESCRIPTION

PENINSULA CORRIDOR JOINT POWERS BOARD		STANDARD DRAWINGS		CADD FILE NO.: SD-7006	
APPROVED BY:		 1250 San Carlos Avenue San Carlos, CA 94070		REV 0 DATE 093011	
 ENGINEERING MANAGER				 DEPUTY DIRECTOR OF ENGINEERING	
				STANDARD NO.: SD-7006	