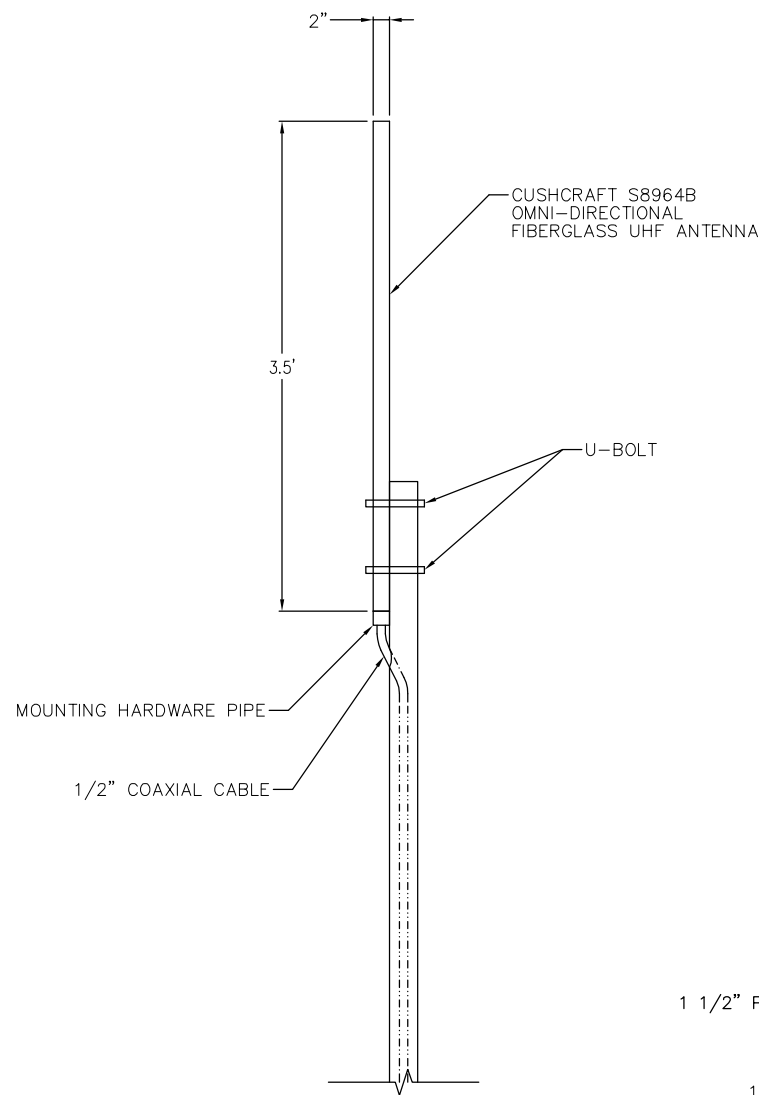
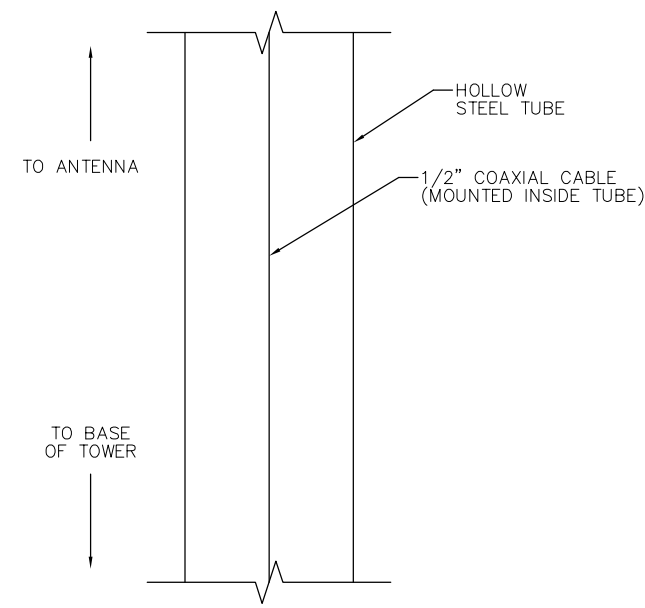


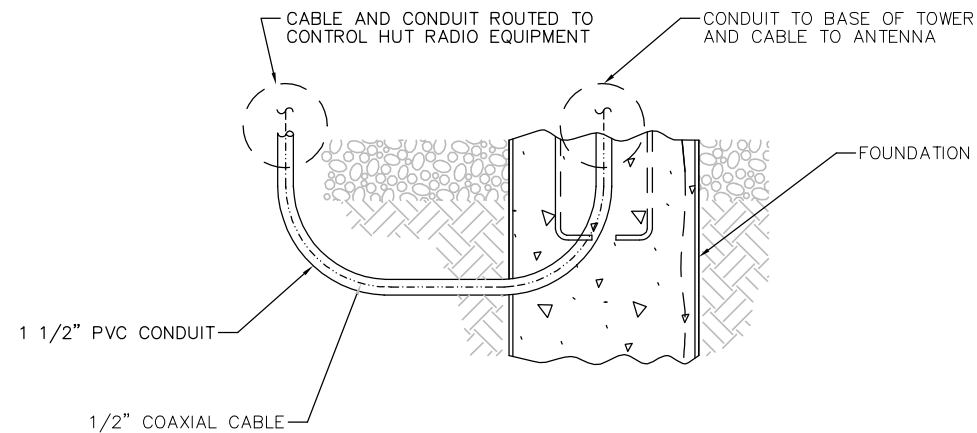
**TYPICAL CONTROL POINT
TILE DOWN ANTENNA DETAIL**
SCALE: NTS



10 DETAIL
SCALE: NTS



11 DETAIL
SCALE: NTS



12 DETAIL
SCALE: NTS

NOTE:

THE ANTENNA FOR CP BART WILL BE INSTALLED ON THE RAILROAD SIGNAL BRIDGE.

OMNIDIRECTIONAL UHF ANTENNA

MANUFACTURER:	CUSHCRAFT/SIGNALS
TABLE:	S8964B
GENERAL FREQ. (MHz.):	896 - 960 MHz.
BANDWIDTH (MHz.):	64 MHz.
GAIN (dBd):	4 dBd
GAIN (dBi):	6.15 dBi
MAX. POWER INPUT (WATTS):	150 WATTS VERT.
BANDWIDTH:	20 DEG.
DOWN TILT (DEG.):	NONE
VSWR:	1.2:1
POLARIZATION:	VERTICAL
INTERMODULATION:	N/A
NULL FILL:	N/A
SIDELobe SUPPRESSION (dB):	N/A
LIGHTNING PROTECTION:	DC GROUND
SIZE (HXWXD"):	3.5 X 2"
WEIGHT (LBS.):	1.1 LBS.
RATED WIND VELOCITY (MPH):	125 MPH
WIND LOAD (SQ. FT.):	0.22 SQ. FT.
LATERAL THRUST @ RWV (LBS.):	N/A
BENDING MOMENT @ RWV (LBS.):	N/A

REV	DATE	BY	CHK	APP	DESCRIPTION	REV	DATE	BY	CHK	APP	DESCRIPTION

PENINSULA CORRIDOR JOINT POWERS BOARD

APPROVED BY:




ENGINEERING MANAGER DEPUTY DIRECTOR OF ENGINEERING



1250 San Carlos Avenue
 San Carlos, CA 94070

STANDARD DRAWINGS		CADD FILE NO.:	SD-6706
TRAIN CONTROL COMMUNICATION ATCS (DATA) RADIO SYSTEM OMNIDIRECTIONAL ANTENNA TYPICAL DETAILS		REV	DATE
		0	093011
		TRAIN CONTROL	
		STANDARD NO.:	SD-6706