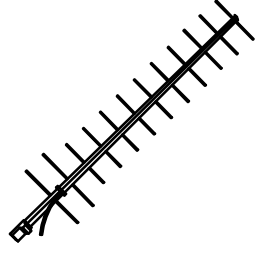
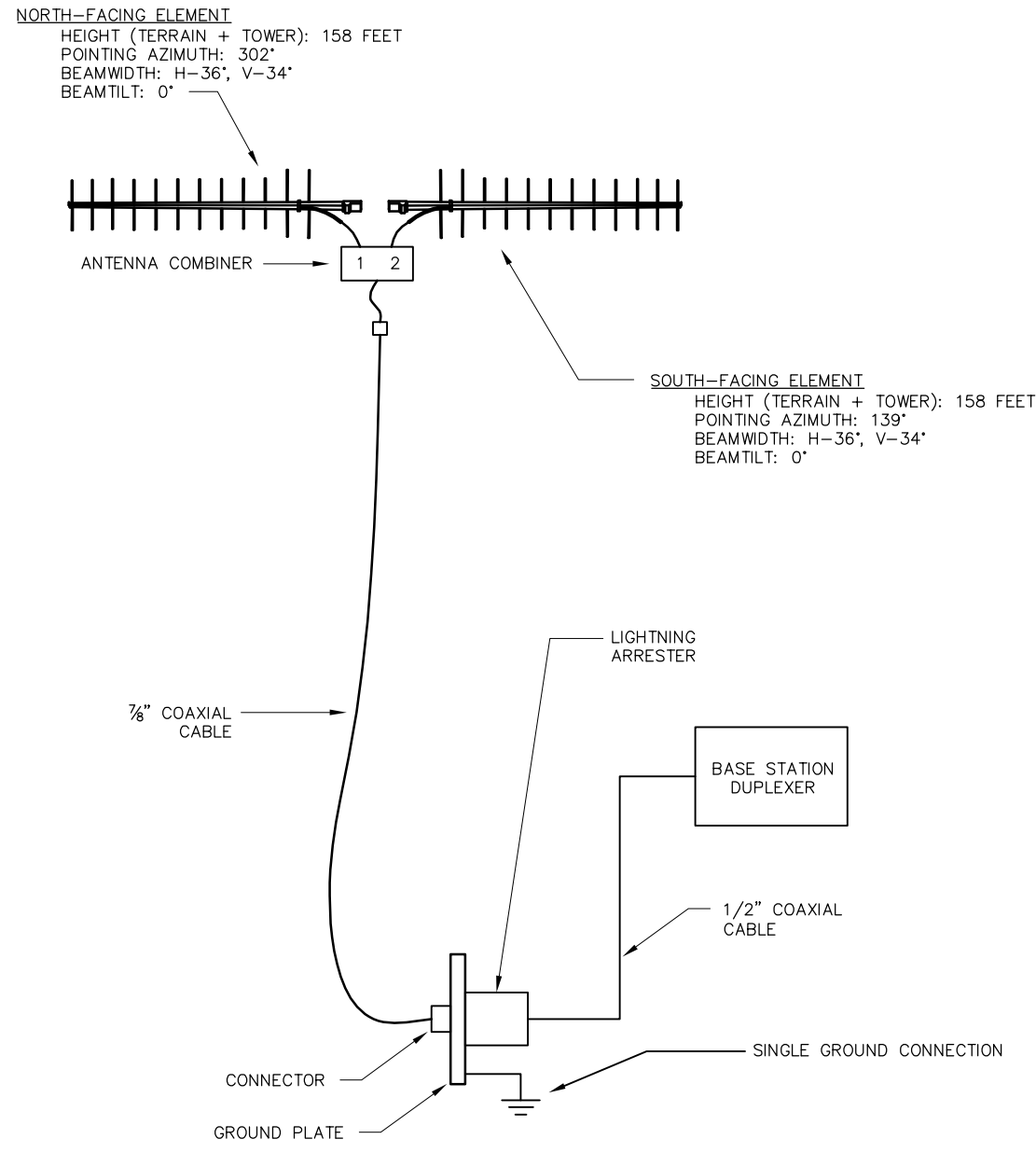


Manufacturer Mfg. Part Number	MAXRAD MYA93012
896-960 MHz Yagi/Corner Reflector Antenna	
Antenna Type:	12 - ELEMENT YAGI
DESCRIPTION:	12 ELEMENT YAGI. 11 dB DIRECTIONAL GAIN. SOLID ELEMENTS MOUNTED THROUGH BOOM FOR LONG LIFE. ALSO AVAILABLE WITH A DURABLE BLACK FINISH.
ELECTRICAL SPECIFICATIONS	
General Frequency (MHz):	806-960
Bandwidth @ rated VSWR (MHz)	80
Specific Frequency: see below	
Gain (dBd):	11
Gain (dBi):	13, 15
Horizontal Beamwidth (degrees):	36 DEG.
Vertical Beamwidth (degrees):	34 DEG.
Front to Back Ratio (dB):	20 dB
Maximum Power Input (W):	150 WATTS
VSWR @ 50 ohms:	1.5:1
Polarization:	VERT./HORIZ.
Lightning Protection:	DC GROUND
MECHANICAL SPECIFICATIONS	
Size (HxWxD):	4'
Weight (Lbs):	2
Rated Wind Velocity (MPH):	125
Wind Load, Flat Plate (Ft2):	0.27
Lateral Thrust (Lbs):	16.6
Bending Moment (ft Lbs):	23.3

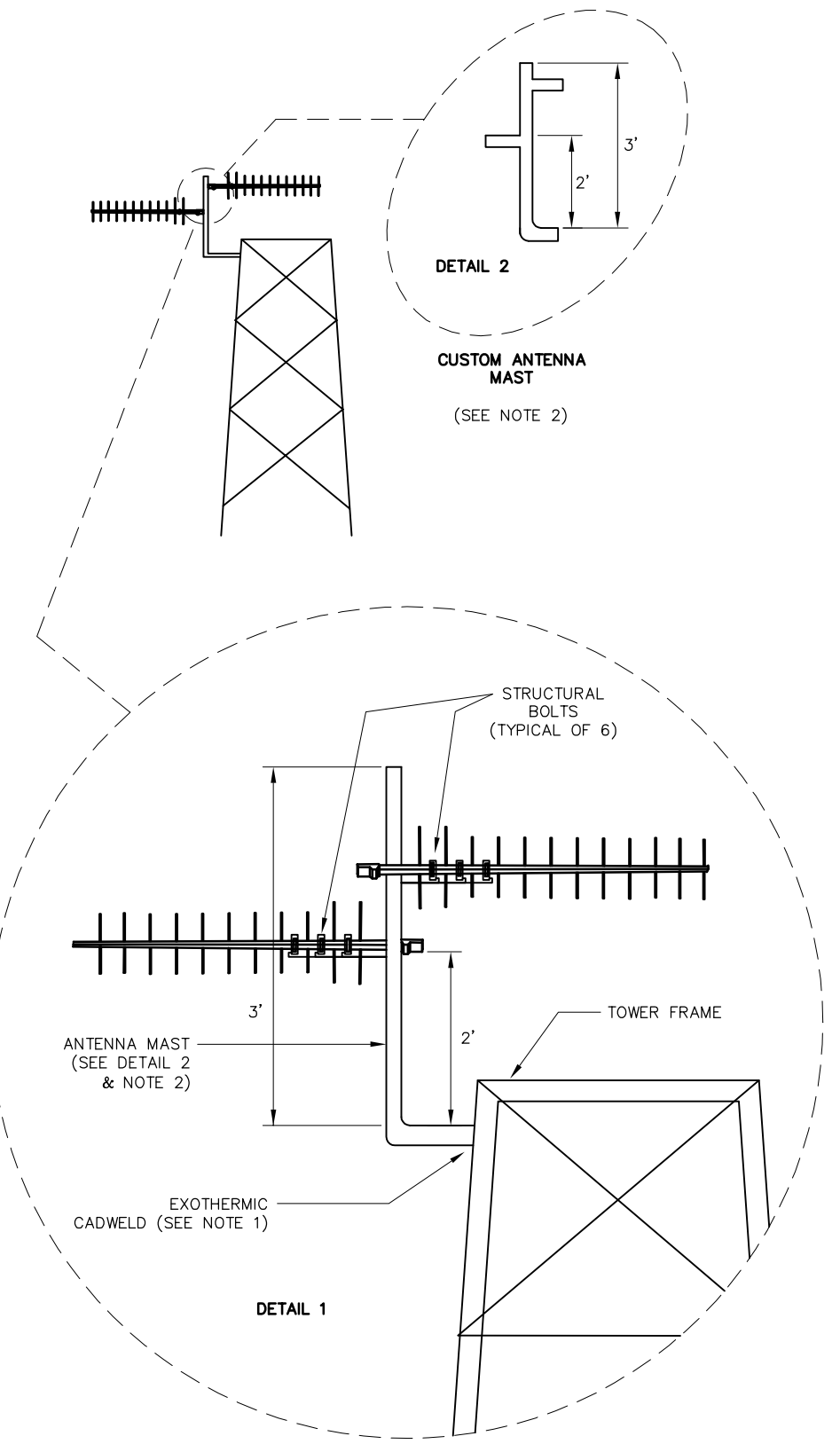
DATA RADIO BASE STATION ANTENNA
SINGLE ANTENNA SPECIFICATIONS

NOTES:

1. ANTENNA MASTS SHALL USE AN 'EXOTHERMIC' CADWELD TO THE TOWER FRAME. THIS CADWELD SHALL POSSESS THE STRENGTH TO MEET THE STRUCTURAL & WIND LOADING REQUIREMENTS OF THE TECHNICAL SPECIFICATION. THE CONTRACTOR'S REGISTERED CIVIL/STRUCTURAL ENGINEER SHALL DETERMINE THE APPROPRIATE EXOTHERMIC AND STRUCTURAL WELD AND SUBMIT THE CALCULATIONS TO CALTRAIN FOR REVIEW AND APPROVAL.
2. A CUSTOM ANTENNA MAST IS REQUIRED. MAST SHALL BE OF AN EXCELLENT CONDUCTOR. ANTENNA GROUNDED THROUGH THE MAST & TOWER TO GROUND. CONTRACTOR SHALL USE THIS CONFIGURATION OR ENGINEER APPROVED EQUAL.
3. ANTENNA POINTING AZIMUTHS ARE WITH RESPECT TO TRUE NORTH.



SINGLE LINE DRAWING OF
ANTENNA SYSTEM



ANTENNA MOUNTING
(SEE NOTE 1)

REV	DATE	BY	CHK	APP	DESCRIPTION

PENINSULA CORRIDOR JOINT POWERS BOARD

APPROVED BY:

Bernard Anzures *Stefan Chen*

ENGINEERING MANAGER DEPUTY DIRECTOR OF ENGINEERING



1250 San Carlos Avenue
San Carlos, CA 94070

STANDARD DRAWINGS

TRAIN CONTROL COMMUNICATION
ATCS (DATA) RADIO SYSTEM
CEM OF BASE STATION
TOWER INSTALLATION DETAILS

CADD FILE NO.: SD-6607	
REV 0	DATE 093011
TRAIN CONTROL	
STANDARD NO.: SD-6607	