

**LEGEND**

- LEASED 4 WIRE ANALOG TELEPHONE CIRCUITS
- - - - - MICROWAVE RADIO NETWORK

REV	DATE	BY	CHK	APP	DESCRIPTION

**PENINSULA CORRIDOR JOINT POWERS BOARD**

APPROVED BY:

*Bernard Anzures*      *Steph Chen*

ENGINEERING MANAGER      DEPUTY DIRECTOR OF ENGINEERING



1250 San Carlos Avenue  
San Carlos, CA 94070

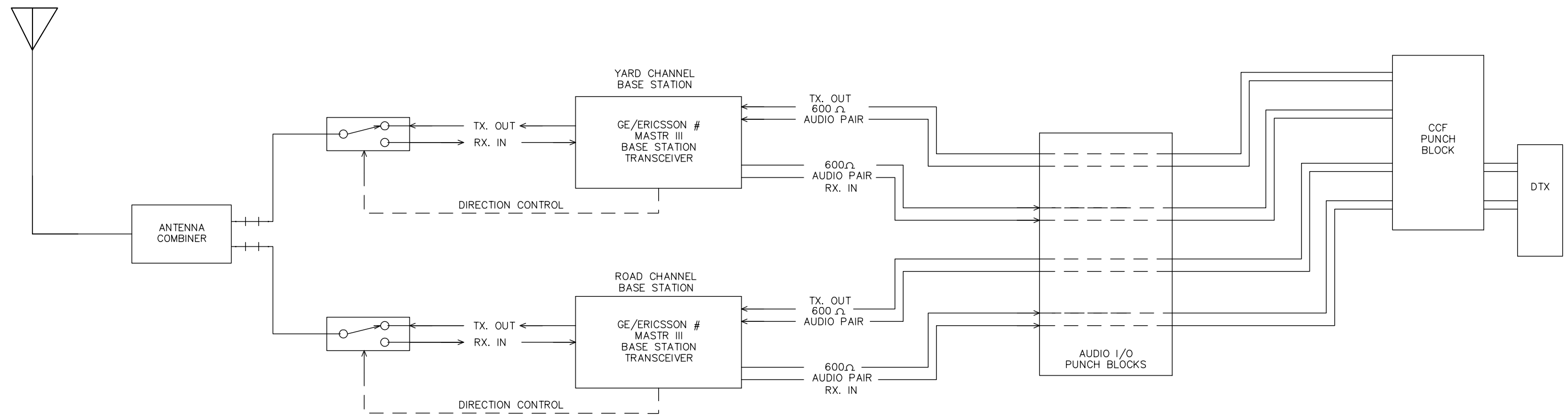
**STANDARD DRAWINGS**

TRAIN CONTROL COMMUNICATION  
VOICE RADIO – EXISTING SYSTEM  
EXISTING SYSTEM  
BLOCK DIAGRAM

CADD FILE NO.: SD-6050	
REV 0	DATE 093011
TRAIN CONTROL	
STANDARD NO.: SD-6050	

**NOTES:**

1. LOCATION : N37 19' 44.6" / W 122 54' 1.5", ELEVATION (TERRAIN & TOWER): 130'
2. ANTENNA AZIMUTH: 334' / 154' (DUAL YAGI ANTENNAS ORIENTED 180° WRT EACH OTHER)
3. DRAWING DEPICTS THE COAXIAL RELAYS CONFIGURED TO SUPPORT BASE STATION TRANSMIT OPERATIONS



REV	DATE	BY	CHK	APP	DESCRIPTION

**PENINSULA CORRIDOR JOINT POWERS BOARD**

APPROVED BY:

ENGINEERING MANAGER

DEPUTY DIRECTOR OF ENGINEERING

1250 San Carlos Avenue  
San Carlos, CA 94070

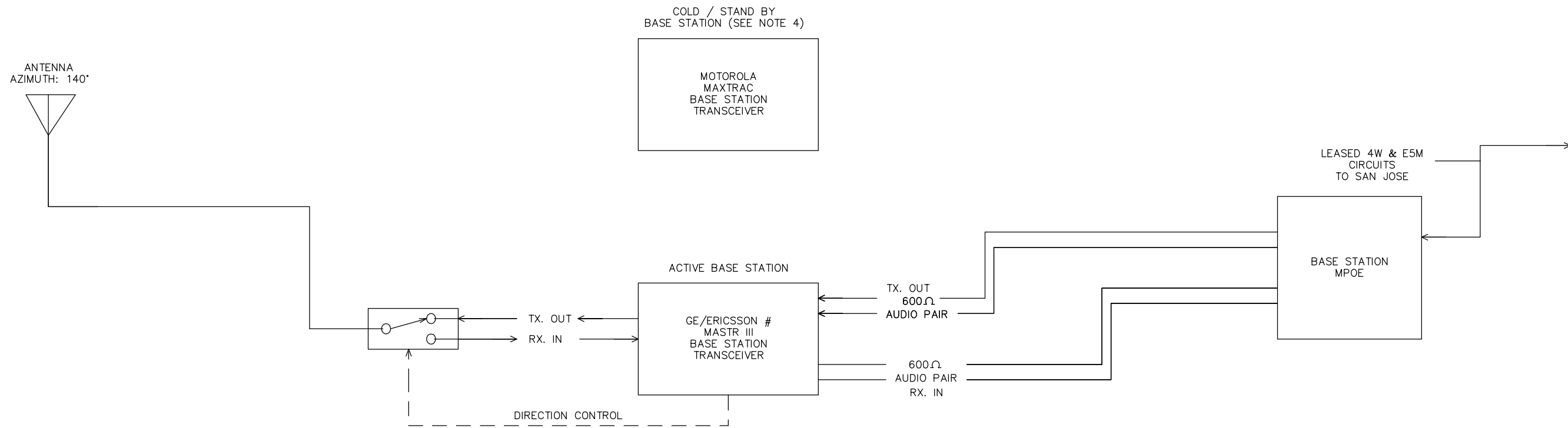
**STANDARD DRAWINGS**

TRAIN CONTROL COMMUNICATION  
VOICE RADIO – EXISTING SYSTEM  
EXISTING SYSTEM  
SAN JOSE BASE STATION

CADD FILE NO.: SD-6051	
REV 0	DATE 093011
TRAIN CONTROL	
STANDARD NO.: SD-6051	

**NOTES:**

1. LOCATION: N37°30'23.4"/W122°15'43.1", ELEVATION (TERRAIN & TOWER): 99'
2. ANTENNA AZIMUTH: 140° (DIRECTIONAL: YAGI)
3. DRAWING DEPICTS THE COAXIAL RELAYS CONFIGURED TO SUPPORT BASE STATION TRANSMIT OPERATIONS
4. THE COLD / STANDBY BASE STATION IS PROGRAMMED TO THE SAME OPERATING FREQUENCIES & CONFIGURED IDENTICAL TO THE ACTIVE BASE STATION, HOWEVER ITS POWER SWITCH IS SET TO OFF



REV	DATE	BY	CHK	APP	DESCRIPTION

**PENINSULA CORRIDOR JOINT POWERS BOARD**

APPROVED BY:

ENGINEERING MANAGER

DEPUTY DIRECTOR OF ENGINEERING

1250 San Carlos Avenue  
San Carlos, CA 94070

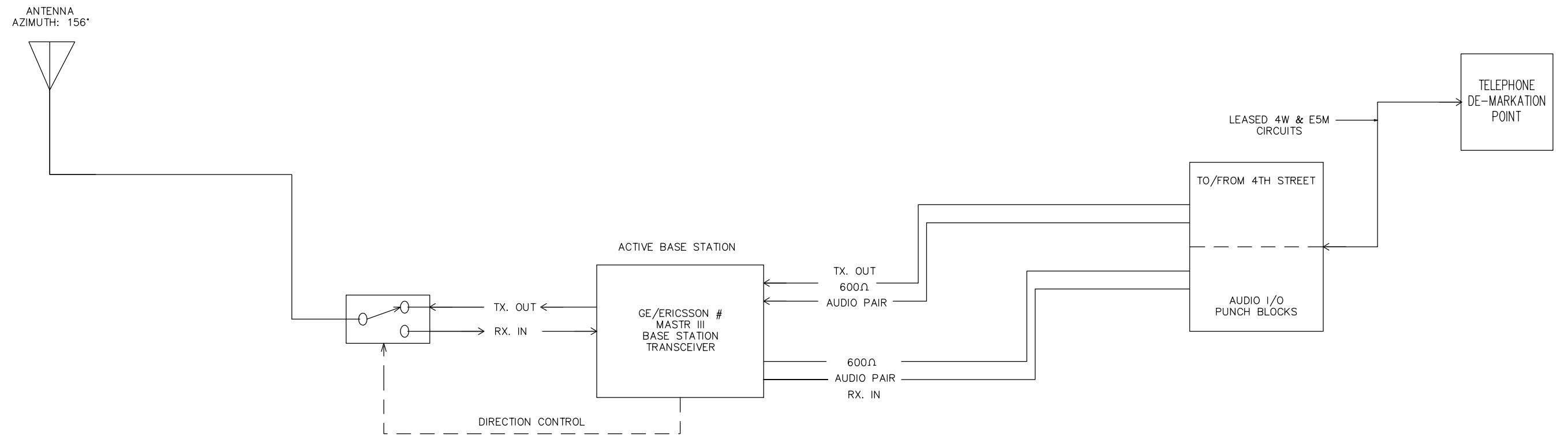
**STANDARD DRAWINGS**

TRAIN CONTROL COMMUNICATION  
VOICE RADIO – EXISTING SYSTEM  
EXISTING SYSTEM  
SAN CARLOS BASE STATION

CADD FILE NO.: SD-6052	
REV 0	DATE 093011
TRAIN CONTROL	
STANDARD NO.: SD-6052	

**NOTES:**

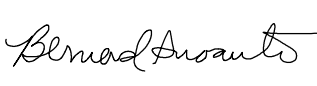

1. LOCATION : N37° 39' 53.8" / W122° 25' 14.1", ELEVATION (TERRAIN & TOWER): 576'
2. ANTENNA AZIMUTH: 156" (DIRECTIONAL: YAGI)
3. DRAWING DEPICTS THE COAXIAL RELAYS CONFIGURED TO SUPPORT BASE STATION TRANSMIT OPERATIONS
4. THE COLD / STANDBY BASE STATION IS PROGRAMMED TO THE SAME OPERATING FREQUENCIES & CONFIGURED IDENTICAL TO THE ACTIVE BASE STATION, HOWEVER ITS POWER SWITCH IS SET TO OFF




REV	DATE	BY	CHK	APP	DESCRIPTION

**PENINSULA CORRIDOR JOINT POWERS BOARD**

APPROVED BY:

ENGINEERING MANAGER      DEPUTY DIRECTOR OF ENGINEERING



1250 San Carlos Avenue  
 San Carlos, CA 94070

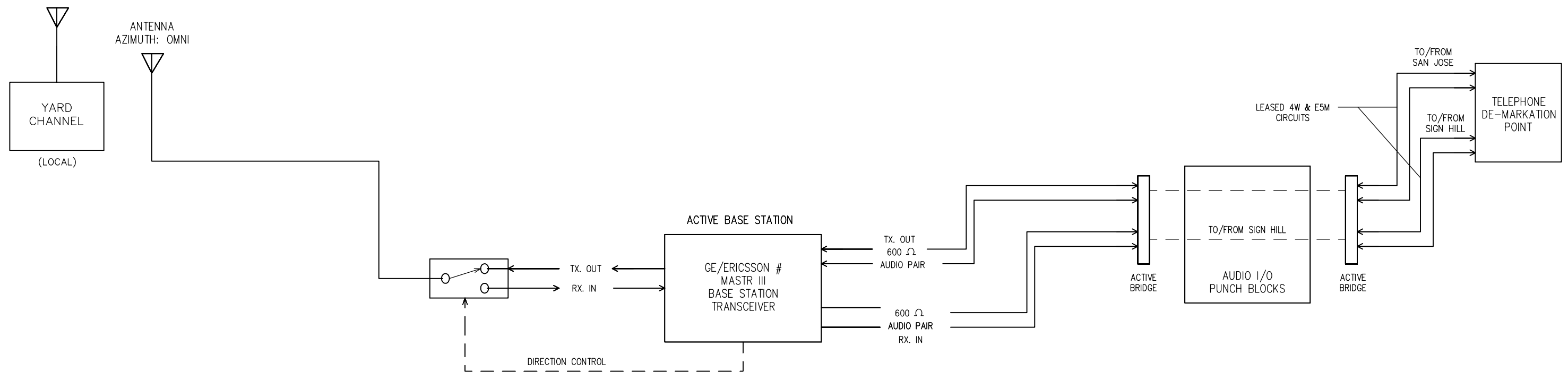
**STANDARD DRAWINGS**

TRAIN CONTROL COMMUNICATION  
 VOICE RADIO – EXISTING SYSTEM  
 EXISTING STATION  
 SIGN HILL BASE STATION

CADD FILE NO.: SD-6053	
REV	DATE
0	093011
TRAIN CONTROL	
STANDARD NO.: SD-6053	

NOTES:

1. LOCATION : N37° 46' 28.8" / W122° 23' 50.2", ELEVATION (TERRAIN & TOWER): 65'
2. ANTENNA AZIMUTH: (OMNI DIRECTIONAL)
3. DRAWING DEPICTS THE COAXIAL RELAYS CONFIGURED TO SUPPORT BASE STATION TRANSMIT OPERATIONS



REV	DATE	BY	CHK	APP	DESCRIPTION

**PENINSULA CORRIDOR JOINT POWERS BOARD**

APPROVED BY:

*Bernard Anzures*      *Stefan Chen*

ENGINEERING MANAGER      DEPUTY DIRECTOR OF ENGINEERING



1250 San Carlos Avenue  
San Carlos, CA 94070

**STANDARD DRAWINGS**

TRAIN CONTROL COMMUNICATION  
VOICE RADIO – EXISTING SYSTEM  
EXISTING SYSTEM  
4TH STREET BASE STATION

CADD FILE NO.: SD-6054	
REV	DATE
0	093011
TRAIN CONTROL	
STANDARD NO.: SD-6054	