

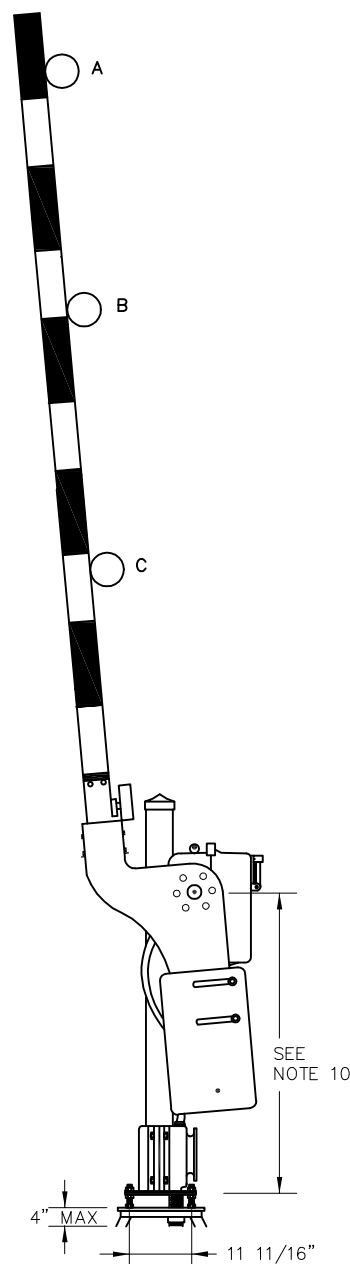
NOTES FOR GATE ARM:

1. GATE ARM LENGTH IS MEASURED FROM GATE MECHANISM CAM SHAFT TO END OF GATE ARM
2. END OF GATE ARM SHALL BE LOCATED WITHIN 12" OF THE CENTERLINE OF ROADWAY OR FACE OF MEDIAN CURB. WHERE PRACTICAL, END OF GATE ARM SHALL EXTEND TO CENTERLINE OF ROADWAY OR FACE OF MEDIAN CURB
3. THE FOLLOWING GUIDELINES SHALL BE USED FOR GATE ARM LAMP PLACEMENT. HIGHWAY CROSSING SHALL BE EVALUATED AND LAMPS PLACED FOR OPTIMUM VIEWING BY MOTORIST

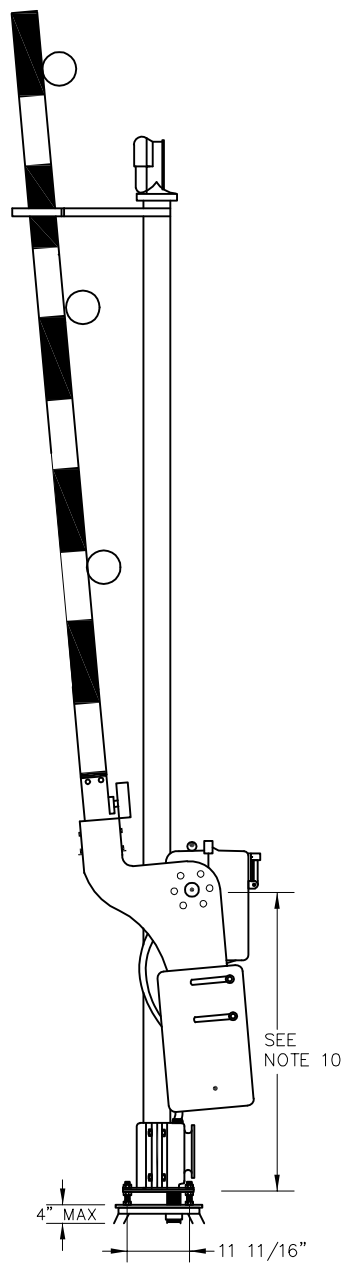
LAMP A:
12" FROM END OF GATE ARM

LAMP B:
GATE LAMP SHALL BE CENTERED BETWEEN LAMP A AND LAMP C

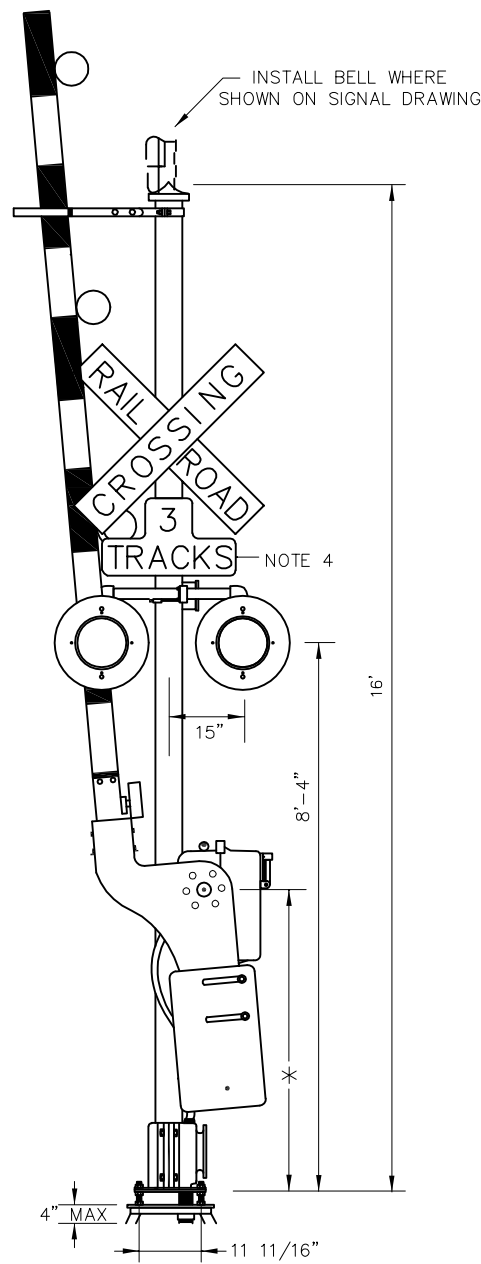
LAMP C:
GATE LAMP SHALL BE 8' FROM CENTER OF MAST



STUB GATE
(NOT FOR NEW WORK)



GATE USED W/CFLS
(PUC NO. 9A)
SEE NOTE 13



FLS W/GATE
(PUC NO. 9)

NOTES:

1. TOP OF FOUNDATION SHALL BE LEVEL WITH CROWN OF ROAD AT MAXIMUM 4" ABOVE TOP OF GROUND LEVEL
2. WHEN USED, SIDELIGHT ASSEMBLY SHALL BE PLACED SO AS NOT TO INTERFERE WITH GATE ARM OR REDUCE TRACK CLEARANCE, 30" SEPARATION OF LIGHT UNITS SHALL BE MAINTAINED
3. ALL PARTS SHALL BE ALUMINUM IN COLOR EXCEPT VISORS AND BACKGROUNDS WILL BE FLAT BLACK
4. TRACK SIGN SHALL BE USED WHEN TWO OR MORE TRACKS CROSS STREET
5. GATE LAMPS SHALL BE 4" DIAMETER
6. FLASHING LIGHT SIGNAL UNIT BACKGROUNDS--24" AND VISORS SHALL BE STEEL
7. LENS HORIZONTAL DOWNWARD DEFLECTION PER AAR/AREMA
8. WHEN AUXILIARY PEDESTRIAN GATE ARM IS USED, FLASHING LIGHT BRACKETS SHALL BE OFFSET
9. BELL MAY BE ELECTRONIC OR ELECTRO MECHANICAL
10. GATE MECHANISM SHALL BE ADJUSTED SO THAT WHEN GATE IS IN FULL HORIZONTAL POSITION, THE GATE ARM RESTS BETWEEN 3'-6" TO 4'-6" ABOVE CROWN OF ROADWAY
11. PEDESTRIAN GATE ARM SHALL HAVE TIP LIGHT UP TO 10', GATE ARMS LONGER THAN 10' TO HAVE THREE LIGHTS
12. PEDESTRIAN GATE ARM SHALL NOT BLOCK ENTIRE WALKWAY. AN EXIT PATH MUST BE PROVIDED FOR PEDESTRIANS WHO ARE IN TRANSIT WHEN GATES ACTIVATE
13. BACKLIGHTS & BELL LOCATIONS ON CANTILEVER & GATES SHALL BE DETERMINED DURING DESIGN

PENINSULA CORRIDOR JOINT POWERS BOARD

APPROVED BY:

Bernard Anzures *Steph Chen*

ENGINEERING MANAGER

DEPUTY DIRECTOR OF ENGINEERING



1250 San Carlos Avenue
San Carlos, CA 94070

STANDARD DRAWINGS

SIGNAL AND COMMUNICATION
HIGHWAY GRADE CROSSING APPARATUS
CROSSING GATE WITH AND WITHOUT
FLASHING LIGHT SIGNALS

CADD FILE NO.:
SD-5409

REV DATE
0 093011

SIGNAL

STANDARD NO.:
SD-5409

REV	DATE	BY	CHK	APP	DESCRIPTION