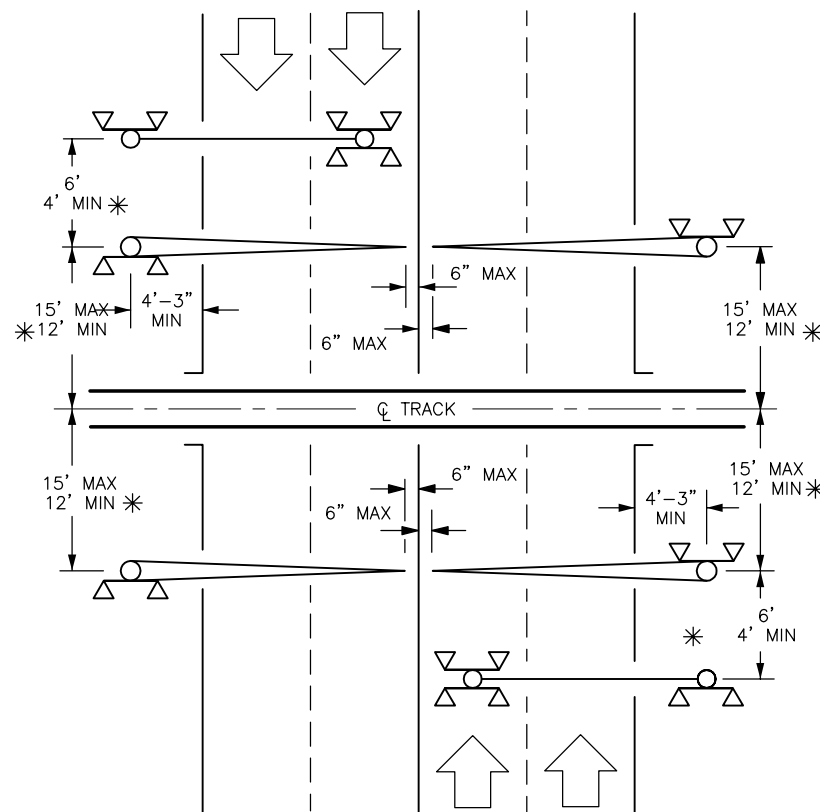
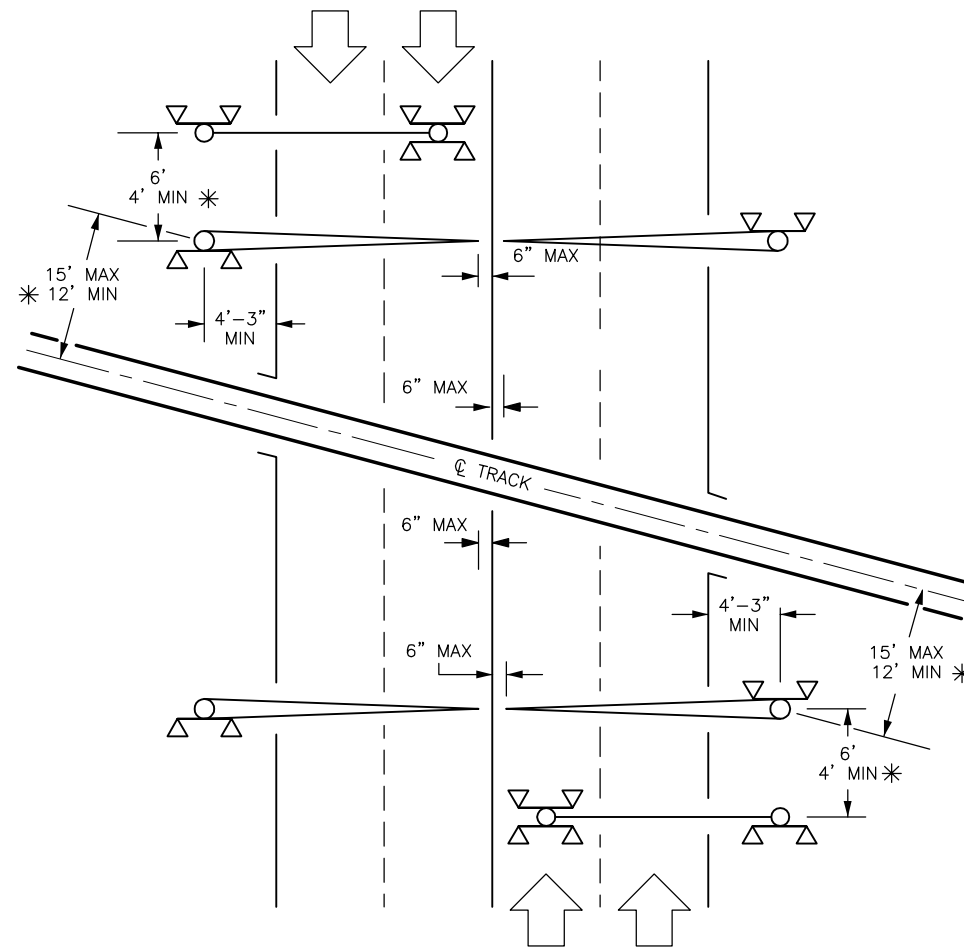


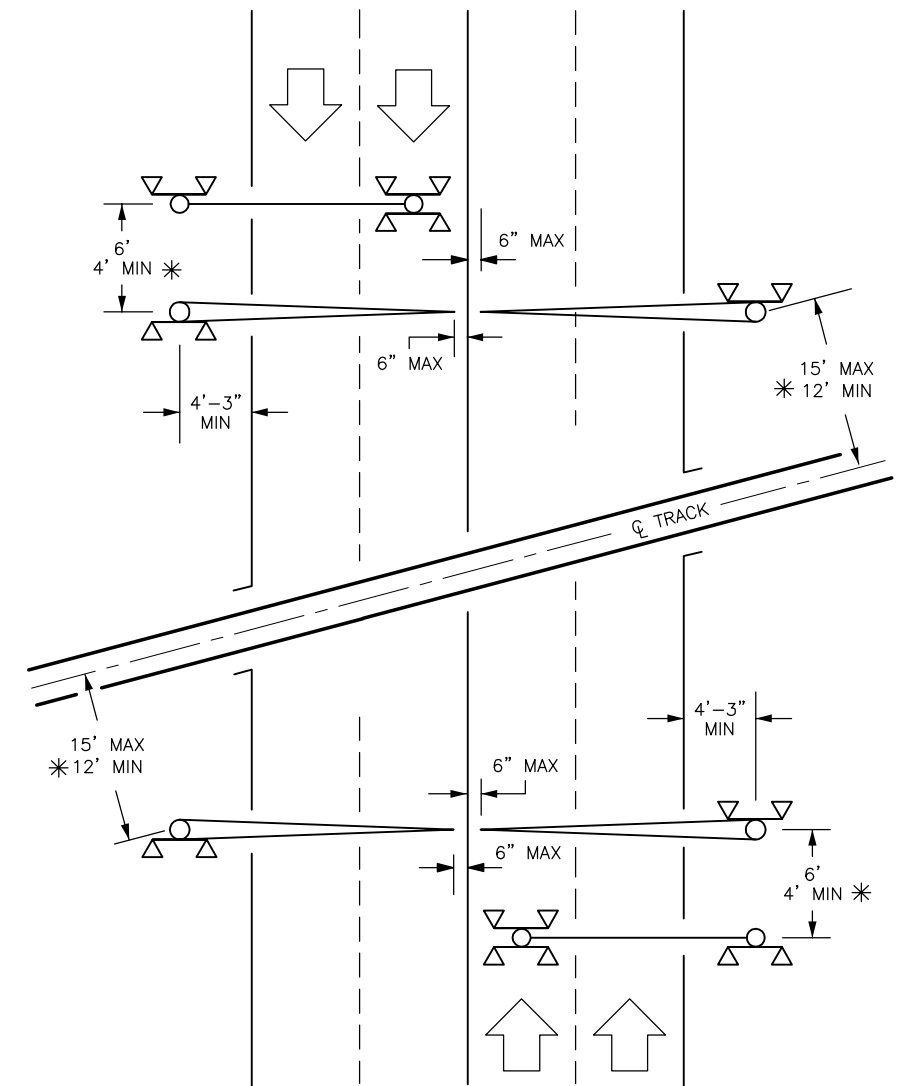
RIGHT ANGLE CROSSING



ACUTE ANGLE CROSSING



OBTUSE ANGLE CROSSING



CANTILEVER FLASHERS WITH ENTRANCE AND EXIT GATES:

ONE OR MORE TRACKS, TWO-WAY VEHICULAR TRAFFIC, TWO LANES EACH WAY
 * USE OF MINIMUM DIMENSIONS SHALL BE AUTHORIZED BY CALTRAIN



NOTES:

1. TYPICAL LOCATION PLAN MAY VARY AS CONDITIONS REQUIRE
2. ROADWAY GATE ARM LENGTH SHALL NOT EXCEED 32' MEASURED FROM THE CENTER OF KINGPIN TO THE TIP OF GATE ARM
3. SEE STANDARD DRAWINGS SD-7000 SERIES FOR ADDITIONAL INFORMATION


REV	DATE	BY	CHK	APP	DESCRIPTION

PENINSULA CORRIDOR JOINT POWERS BOARD

APPROVED BY:

ENGINEERING MANAGER DEPUTY DIRECTOR OF ENGINEERING



1250 San Carlos Avenue
 San Carlos, CA 94070

STANDARD DRAWINGS		CADD FILE NO.:
SIGNAL AND COMMUNICATION HIGHWAY GRADE CROSSING APPARATUS CANTILEVER FLASHERS WITH ENTRANCE AND EXIT GATES		SD-5405
REV	DATE	
0	093011	
STANDARD NO.:		SD-5405