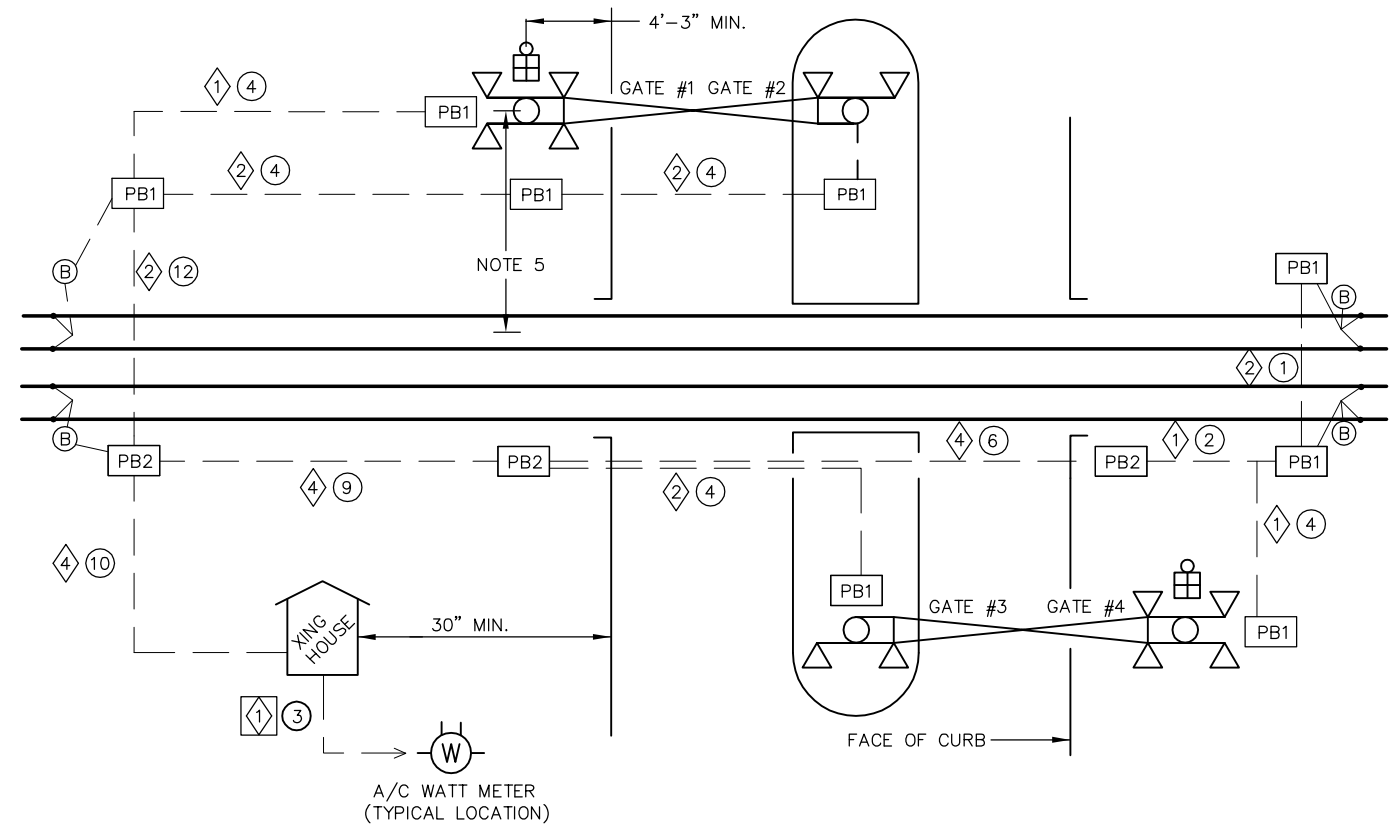
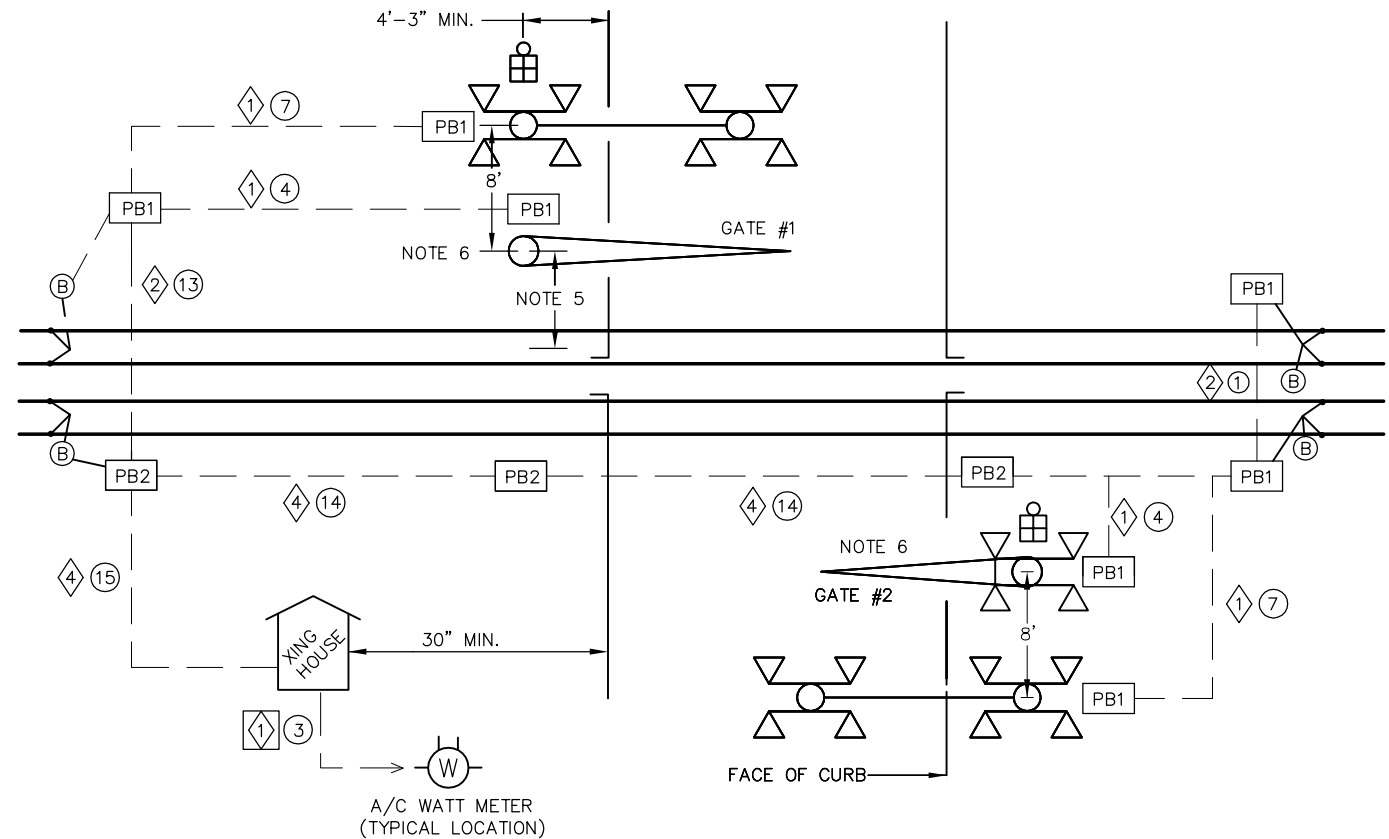


FLASHING LIGHT SIGNALS W/ GATE



FOUR FLASHING LIGHT SIGNALS W/ GATE



CANTILEVER FLASHERS W/ GATES

- ① = NUMBER INSCRIBED DENOTES QUANTITY OF 4 INCH SCH. 80 PVC
- ② = NUMBER INSCRIBED DENOTES QUANTITY OF 2 INCH SCH. 80 PVC
- PB1 = 2'X3' PULL BOX
- PB2 = 3'X5' PULL BOX
- ⓑ = TRACK WIRE BOOTLEGS (SEE SD-4112)

- ① = 1-TW 2C #6
- ② = 2-TW 2C #6
- ③ = 1-3C #6
- ④ = 2-5C #6
1-7C #14
- ⑤ = 4-TW 2C #6
4-5C #6
2-7C #14
- ⑥ = 2-TW 2C #6
2-5C #6
1-7C #14
- ⑦ = 1-5C #6
- ⑧ = 3-5C #6
1-7C #14
- ⑨ = 2-TW 2C #6
4-5C #6
2-7C #14
- ⑩ = 4-TW 2C #6
8-5C #6
4-7C #14
- ⑪ = 1-TW 2C #6
2-5C #6
1-7C #14
- ⑫ = 1-TW 2C #6
4-5C #6
2-7C #14
- ⑬ = 1-TW 2C #6
3-5C #6
1-7C #14
- ⑭ = 2-TW 2C #6
3-5C #6
1-7C #14
- ⑮ = 4-TW 2C #6
6-5C #6
2-7C #14

NOTES:

1. CROSSING HOUSE, CASE AND METER SERVICE LOCATION IS TYPICAL, MAY BE LOCATED IN ANY QUADRANT
2. CROSSING HOUSE AND CASE LOCATED 25' FROM CENTER LINE OF TRACK. VARIATION ONLY ON APPROVAL OF THE ENGINEER
3. TRACK LEADS LOCATED MINIMUM 50' FROM CURB FACE
4. 125' MINIMUM ISLAND CIRCUIT LENGTH
5. 15' MAXIMUM AND 12' MINIMUM SHALL BE MAINTAINED. NO PART OF FLASHER LIGHT ASSEMBLY TO INTRUDE INTO PUC CLEARANCE ENVELOPE 8'-6" INCHES FROM CENTER LINE ON TANGENT TRACK
6. BACKLIGHTS AND BELL LOCATIONS ON CANTILEVER AND GATES TO BE DETERMINED ON DESIGN OR BY THE ENGINEER
7. COVER OUT OF SERVICE FLASHERS WITH BURLAP AND REMOVE ENERGY

REV	DATE	BY	CHK	APP	DESCRIPTION

PENINSULA CORRIDOR JOINT POWERS BOARD		STANDARD DRAWINGS	CADD FILE NO.: SD-5402
APPROVED BY: <i>Bernard Anagnostis</i> <i>Steph Chen</i>		SIGNAL AND COMMUNICATION HIGHWAY GRADE CROSSING APPARATUS	REV 0 DATE 093011
ENGINEERING MANAGER	DEPUTY DIRECTOR OF ENGINEERING		SIGNAL
1250 San Carlos Avenue San Carlos, CA 94070		TYPICAL CROSSING LOCATION	STANDARD NO.: SD-5402