

NOTES:

1. THIS DRAWING SHALL BE USED ONLY AS A GUIDE. EACH CROSSING SHALL BE EVALUATED AND LED LAMPS ADJUSTED TO PROVIDE OPTIMUM COVERAGE
2. DEFLECTION FOR BACK LIGHTS AND SIDE LIGHTS: 70°
3. DEFLECTION FOR LIGHTS FACING TRAFFIC: 30°/15°
4. DEFLECTION FOR LIGHTS OVER TRAFFIC, BOTH DIRECTIONS: 20°/32°
5. FIRST NUMBER IS HORIZONTAL DEFLECTION
6. SECOND NUMBER IS DOWNWARD DEFLECTION
7. ANGLES OF DEFLECTION DO NOT APPLY TO LED SIGNALS
8. FOCUS LED LIGHTS TO FOCAL POINT ON DRAWING
9. MAINTAIN 30 INCH SEPARATION BETWEEN FLASHERS

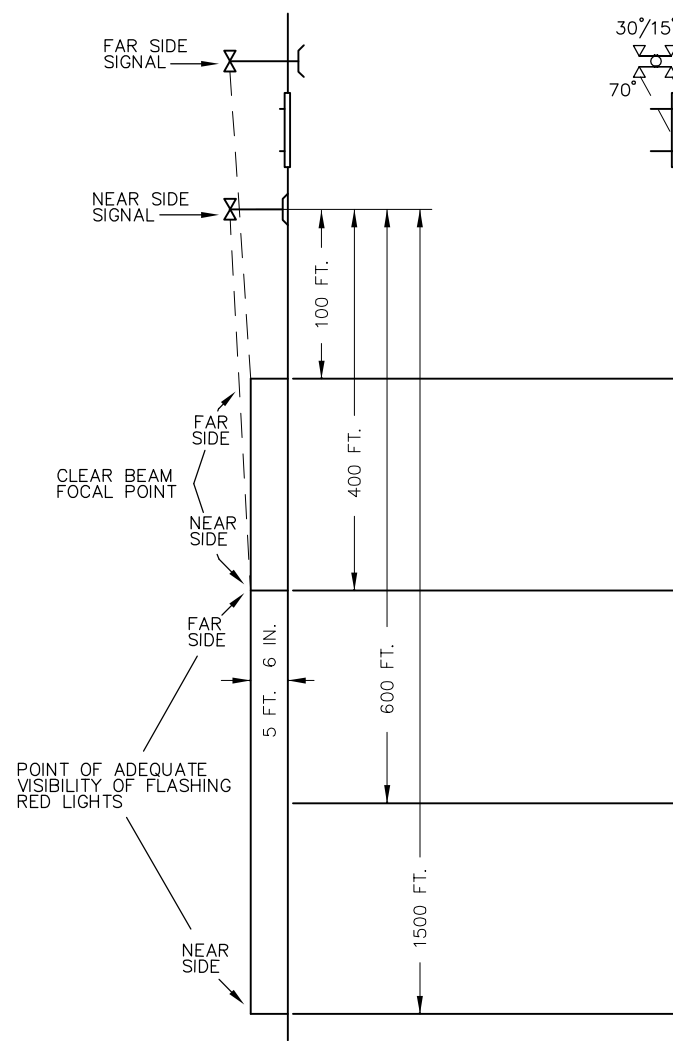


FIGURE 1
SINGLE LANE GROUND FLASHERS
WITH BACK LIGHTS

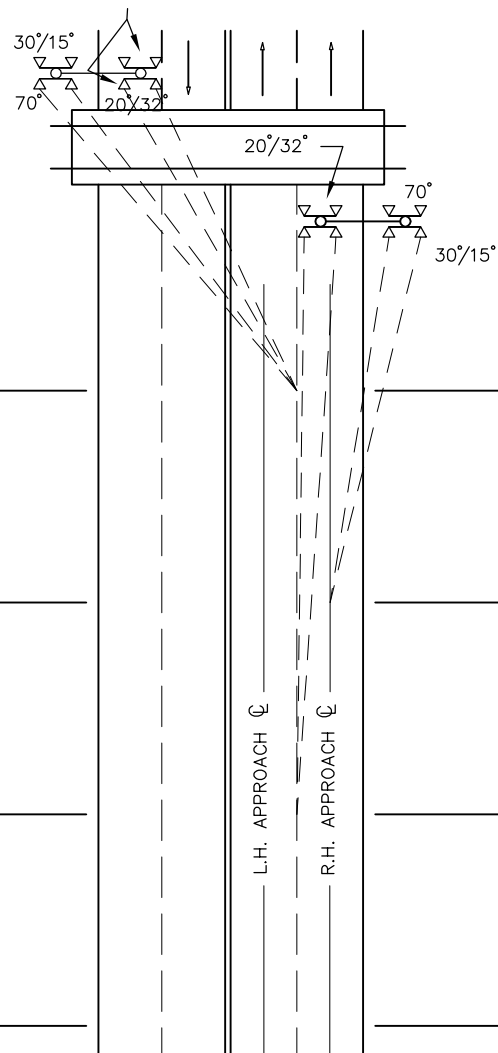


FIGURE 2
TWO LANE APPROACH CANTILEVER
FLASHERS WITH BACK LIGHTS

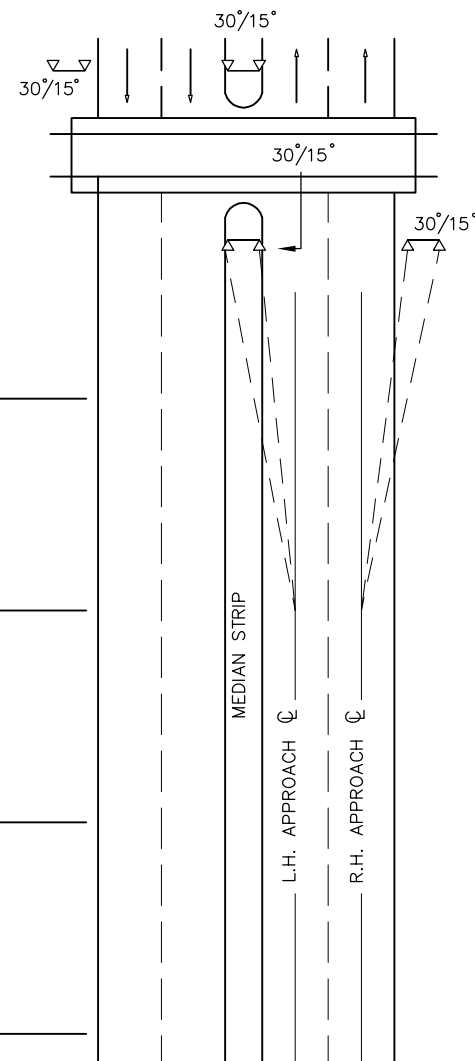


FIGURE 3
TWO LANE APPROACH GROUND FLASHERS ON
R.H. SIDE AND ONE MEDIAN - NO BACK LIGHTS

REV	DATE	BY	CHK	APP	DESCRIPTION

PENINSULA CORRIDOR JOINT POWERS BOARD

APPROVED BY:

ENGINEERING MANAGER

DEPUTY DIRECTOR OF ENGINEERING

1250 San Carlos Avenue
San Carlos, CA 94070

STANDARD DRAWINGS		CADD FILE NO.:
SIGNAL AND COMMUNICATION HIGHWAY GRADE CROSSING APPARATUS TYPICAL HIGHWAY CROSSING SIGNALS LIGHT UNIT ALIGNMENT		SD-5401
		REV 0 DATE 093011
STANDARD NO.:		SD-5401