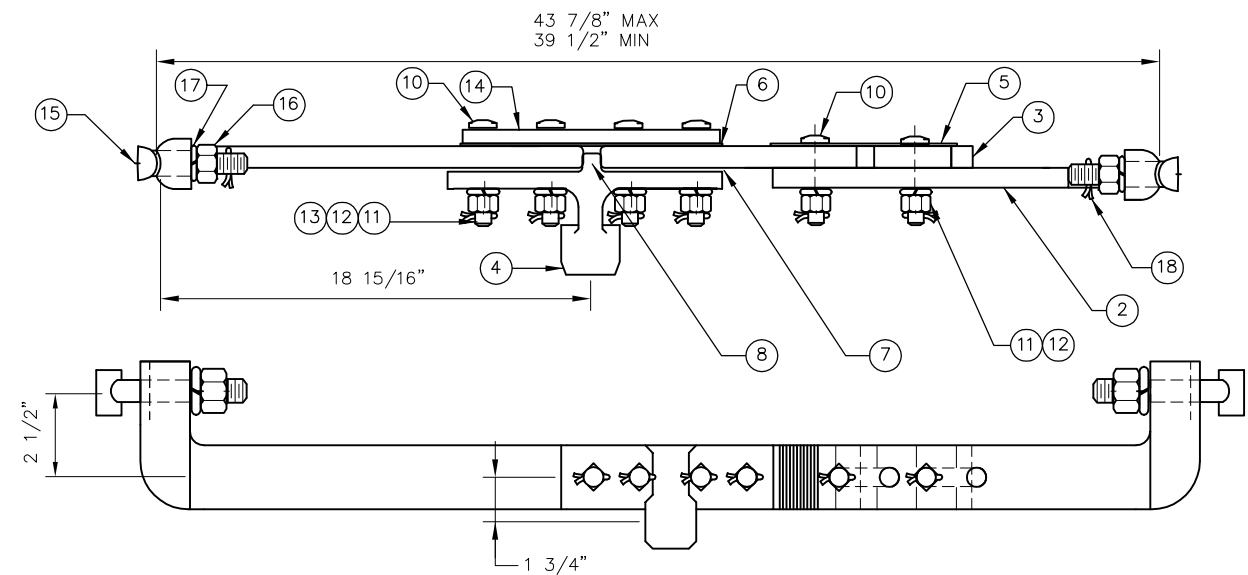


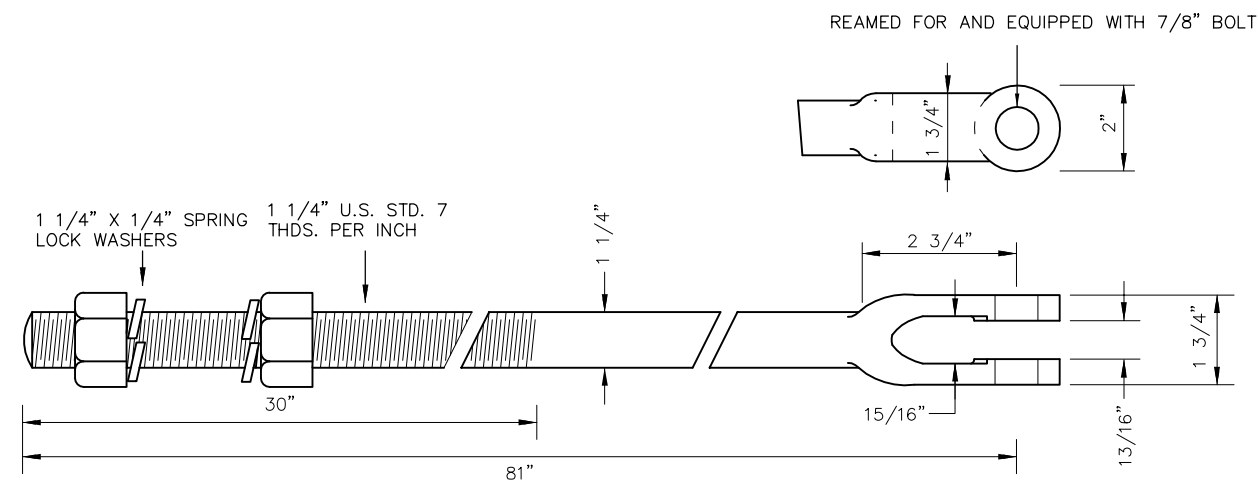
**HIGH PROFILE SWIVEL FRONT ROD**



**LOW PROFILE SWIVEL FRONT ROD**

| ITEM # | DESCRIPTION / MATERIAL/ APPROX. SIZE                               |
|--------|--------------------------------------------------------------------|
| 1      | SWIVEL FRONT ROD                                                   |
| 2      | ADJUSTABLE SWIVEL FRONT BAR                                        |
| 3      | ADJUSTMENT BAR                                                     |
| 4      | FRONT LUG                                                          |
| 5      | PLATE WASHER                                                       |
| 6      | INSULATION, PLATE                                                  |
| 7      | INSULATION, L-SHAPE                                                |
| 8      | INSULATION BUSHING, $\phi$ 1" OD X $\phi$ .766 ID X 1 7/32 LG      |
| 9      | BOLT. 3/4-10 X 2 3/4" HEX HEAD                                     |
| 10     | BOLT. 3/4-10 X 3 3/4" LONG SQ HD DR FOR 3/16 COTTER $\phi$ 3 7/16" |
| 11     | NUT, 3/4-10 HEAVY SQ. HD.                                          |
| 12     | LOCK WASHER, 3/4" HEAVY                                            |
| 13     | COTTER PIN, 3/16 X 1 3/4" LONG                                     |
| 14     | SPLICE PLATE                                                       |
| 15     | T BOLT - FRONT ROD, SWIVEL STYLE                                   |
| 16     | NUT 1 1/4-7 HEAVY HEX HD.                                          |
| 17     | LOCK WASHER, 1 1/4 HEAVY                                           |
| 18     | COTTER PIN 1/4" X 2 1/2" LG.                                       |
| 19     | COTTER PIN 1 1/4 X 3"                                              |

**NOTE:**  
 THROW RODS SHALL BE MADE FROM 1 1/4" ROUND BAR STOCK, FURNISHED WITH ONE 7/8" TURNED BOLT, 2 HEXAGONAL NUTS AND 2 SPRING WASHERS, AS SHOWN. NO WELDING OF ROD IS PERMITTED.



**THROW ROD FOR INTERLOCKED SWITCH LAYOUTS**

FOR REFERENCE ONLY

| REV | DATE | BY | CHK | APP | DESCRIPTION |
|-----|------|----|-----|-----|-------------|
|     |      |    |     |     |             |
|     |      |    |     |     |             |
|     |      |    |     |     |             |
|     |      |    |     |     |             |

**PENINSULA CORRIDOR JOINT POWERS BOARD**

APPROVED BY:




ENGINEERING MANAGER      DEPUTY DIRECTOR OF ENGINEERING



**STANDARD DRAWINGS**

SIGNAL AND COMMUNICATION  
 SWITCH APPARATUS  
 THROW ROD AND SWIVEL ROD  
 FOR SWITCH MACHINE

|                |         |
|----------------|---------|
| CADD FILE NO.: | SD-5319 |
| REV            | DATE    |
| 0              | 093011  |
| SIGNAL         |         |
| STANDARD NO.:  | SD-5319 |