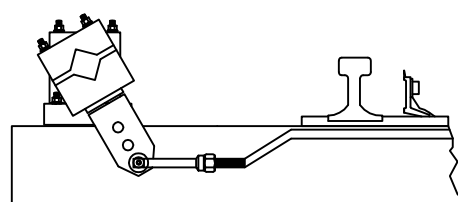
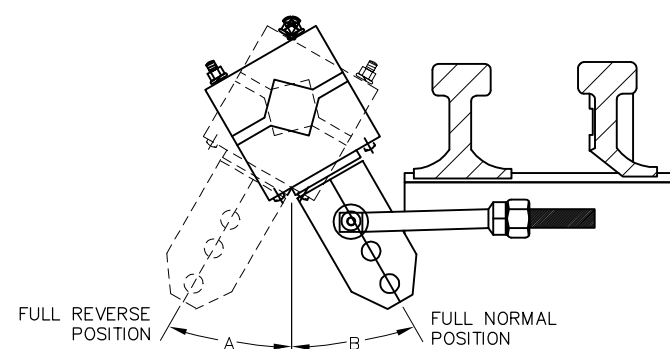


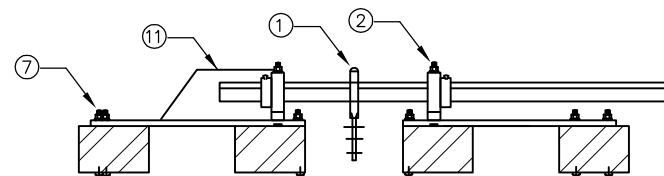
FRONT DRIVE ROD



REAR DRIVE ROD



DRIVE ROD POSITION



SECTION AT HELPER ROD

ITEM	DESCRIPTION	QUANTITY
1	DRIVE ARM ASSEMBLY	2
2	PILLOW BLOCK ASSEMBLY	6
3	PILLOW BLOCK MOUNTING PLATE	4
4	DRIVE BAR COUPLING ASSEMBLY	1
5	DRIVE BAR, 138" WITH ONE HOLE	2
6	BALLAST KEEPER ASSEMBLY	2
7	STUD ASSEMBLY, 3/4" X 13"	24
8	FRONT ASSIST ROD 55" LONG, 1 END LH	1
9	REAR ASSIST DRIVE ROD	1
10	SWITCH POINT ADJUSTER	1
11	DRIVE BAR HOOD	2
12	PILLOW BLOCK TIE PLATE	2

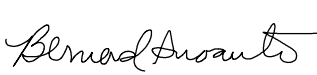

**NOTE:**

PLACE DRIVE ARM IN A VERTICAL POSITION MIDWAY BETWEEN NORMAL AND REVERSE POSITIONS. MAKE ADJUSTMENTS SO THAT SEGMENTS "A" AND "B" ARE APPROXIMATELY EQUAL DISTANCES


REV	DATE	BY	CHK	APP	DESCRIPTION

**PENINSULA CORRIDOR JOINT POWERS BOARD**

APPROVED BY:

ENGINEERING MANAGER      DEPUTY DIRECTOR OF ENGINEERING



1250 San Carlos Avenue  
 San Carlos, CA 94070

STANDARD DRAWINGS		CADD FILE NO.:
SIGNAL AND COMMUNICATION SWITCH APPARATUS		SD-5315
REV	DATE	
0	093011	
SIGNAL		
STANDARD NO.:		SD-5315