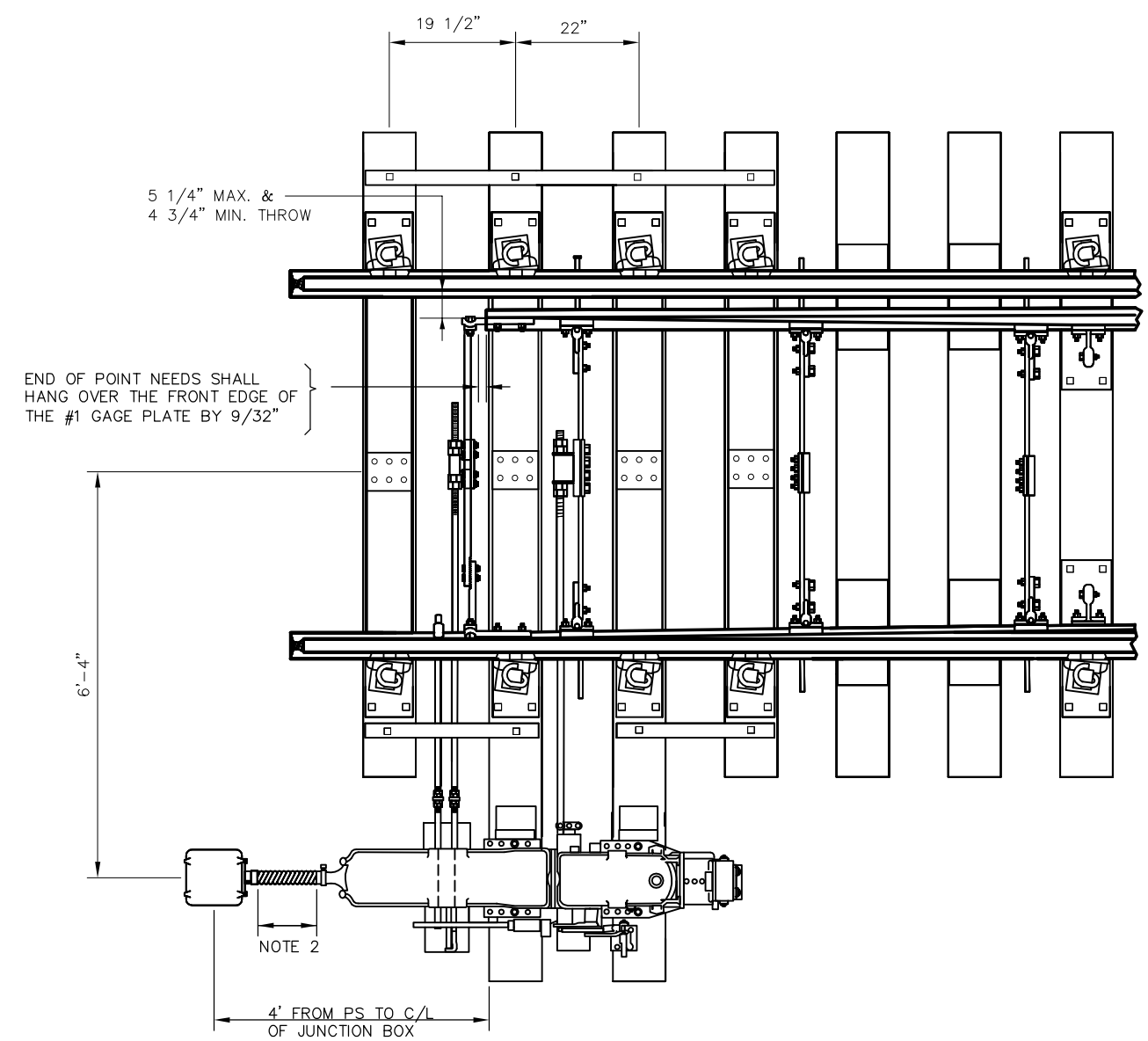


**LEFT HAND MOUNTED**  
NO. 10 WOOD TIES  
SPACING



**RIGHT HAND MOUNTED**  
NO. 14 WOOD TIES  
SPACING

**NOTES:**

1. SET MACHINE SO THAT CONNECTING RODS ARE PERPENDICULAR TO TRACK
2. 18"-24" MAX. LIQUIDTITE SHALL BE LEVEL BETWEEN SWITCH MACHINE AND JUNCTION BOX. TOP OF JUNCTION BOX SHALL NOT BE HIGHER THAN TOP OF SWITCH MACHINE
3. REFER TO SD-2000 SERIES DRAWINGS FOR TIE SPACING AND LENGTH

REV	DATE	BY	CHK	APP	DESCRIPTION

**PENINSULA CORRIDOR JOINT POWERS BOARD**

APPROVED BY:




ENGINEERING MANAGER      DEPUTY DIRECTOR OF ENGINEERING



**STANDARD DRAWINGS**

SIGNAL AND COMMUNICATION  
 SWITCH APPARATUS  
 5F SWITCH MACHINE LAYOUT  
 NO. 10 OR NO. 14 WOOD TIES

CADD FILE NO. SD-5313	
REV 0	DATE 093011
SIGNAL	
STANDARD NO. SD-5313	