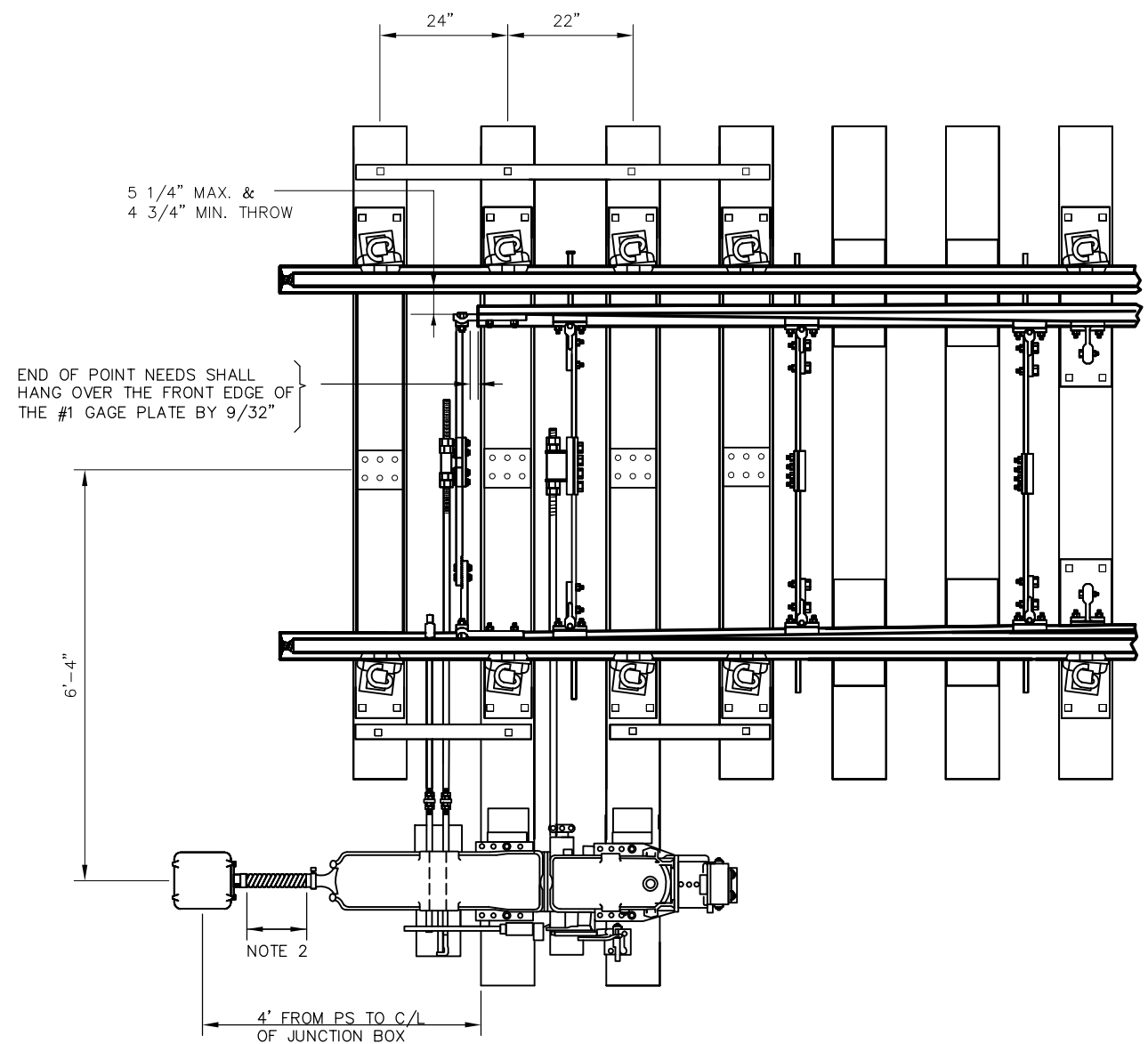


**LEFT HAND MOUNTED**  
NO. 10 CONCRETE  
TIES SPACING



**RIGHT HAND MOUNTED**  
NO. 14 CONCRETE  
TIES SPACING

- NOTES:**
1. SET MACHINE SO THAT CONNECTING RODS ARE PERPENDICULAR TO TRACK
  2. 18"-24" MAX. LIQUIDTITE SHALL BE LEVEL BETWEEN SWITCH MACHINE AND JUNCTION BOX. TOP OF JUNCTION BOX SHALL NOT BE HIGHER THAN TOP OF SWITCH MACHINE
  3. REFER TO SD-2000 SERIES DRAWINGS FOR TIE SPACING AND LENGTH

REV	DATE	BY	CHK	APP	DESCRIPTION

**PENINSULA CORRIDOR JOINT POWERS BOARD**

APPROVED BY:

*Bernard Anzures*      *Steph Chen*

ENGINEERING MANAGER      DEPUTY DIRECTOR OF ENGINEERING



1250 San Carlos Avenue  
San Carlos, CA 94070

**STANDARD DRAWINGS**

SIGNAL AND COMMUNICATION  
SWITCH APPARATUS  
5F SWITCH MACHINE LAYOUT  
NO. 10 OR NO. 14 CONCRETE TIES

CADD FILE NO: SD-5312	
REV 0	DATE 093011
SIGNAL	
STANDARD NO: SD-5312	