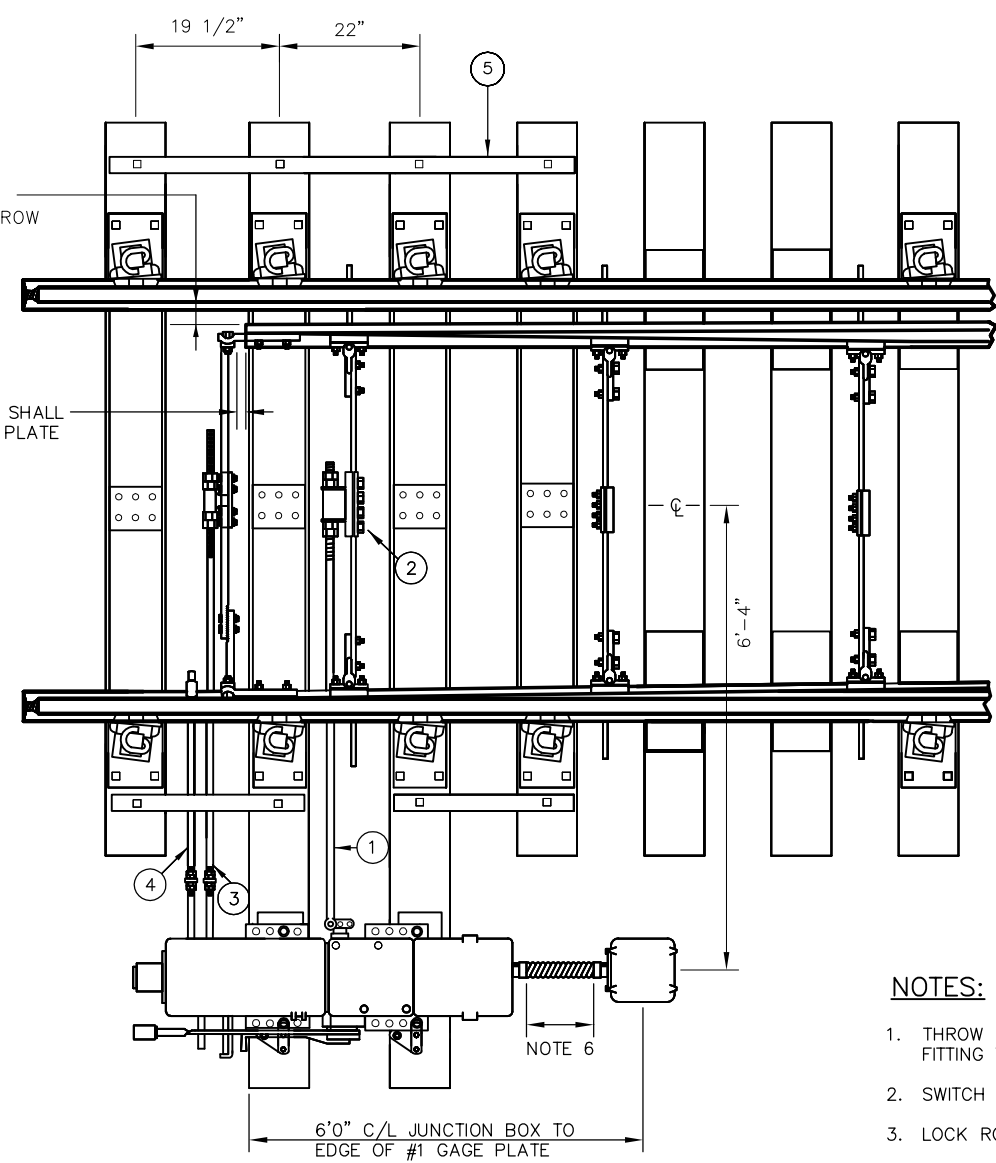


SWITCH POINT SHALL LAG #1 GAGE PLATE TO BY 1"

5 1/4" MAX. & 4 3/4" MIN. THROW

LEFT HAND MOUNTED
NO. 10 WOOD TIES
SPACING



5 1/4" MAX. & 4 3/4" MIN. THROW

SWITCH POINT SHALL LAG #1 GAGE PLATE TO BY 1"

RIGHT HAND MOUNTED
NO. 14 WOOD TIES
SPACING

NOTES:

1. THROW ROD CUT OFF TO 74" LENGTH. REMOVE ALEMITE FITTING TURNED BOLT TO CLEAR COVER ON SWITCH MACHINE
2. SWITCH ADJUSTER, VERTICAL
3. LOCK ROD CONNECTION
4. POINT DETECTOR ROD
5. 1/2" X 2" STEEL STRAP CUT TO REQUIRED LENGTH AND DRILLED FOR 3/4" LAG SCREW
6. 18"-24" MAX. LIQUIDTITE SHALL BE LEVEL BETWEEN SWITCH MACHINE AND JUNCTION BOX. TOP OF JUNCTION BOX SHALL NOT BE HIGHER THAN TOP OF SWITCH MACHINE
7. FLEX CONDUIT TO BE STEEL CORE
8. SET MACHINE SO THAT CONNECTING RODS ARE PERPENDICULAR TO TRACK
9. REFER TO SD-2000 SERIES DRAWINGS FOR TIE SPACING AND LENGTH

REV	DATE	BY	CHK	APP	DESCRIPTION

PENINSULA CORRIDOR JOINT POWERS BOARD

APPROVED BY:

ENGINEERING MANAGER

DEPUTY DIRECTOR OF ENGINEERING

1250 San Carlos Avenue
San Carlos, CA 94070

STANDARD DRAWINGS

**SIGNAL AND COMMUNICATION
SWITCH APPARATUS**

**M-23A SWITCH MACHINE LAYOUT
NO. 10 OR NO. 14 WOOD TIES**

CADD FILE NO.: SD-5309	
REV 0	DATE 093011
SIGNAL	
STANDARD NO.: SD-5309	