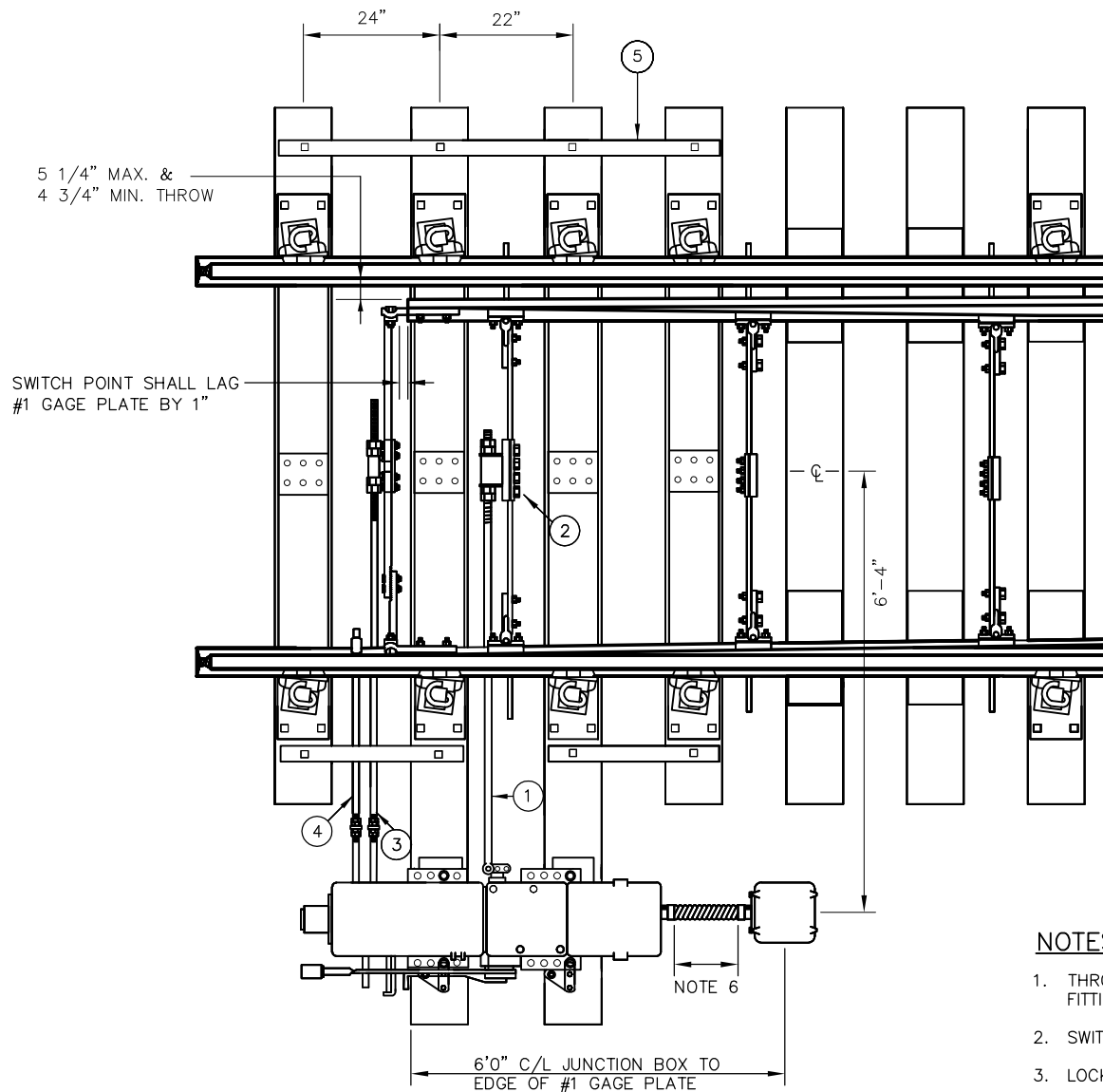


LEFT HAND MOUNTED
NO. 10 CONCRETE
TIES SPACING



RIGHT HAND MOUNTED
NO. 14 CONCRETE
TIES SPACING

NOTES:

1. THROW ROD CUT OFF TO 74" LENGTH. REMOVE ALEMITE FITTING TURNED BOLT TO CLEAR COVER ON SWITCH MACHINE
2. SWITCH ADJUSTER, VERTICAL
3. LOCK ROD CONNECTION
4. POINT DETECTOR ROD
5. 1/2" X 2" STEEL STRAP CUT TO REQUIRED LENGTH AND DRILLED FOR 3/4" LAG SCREW
6. 18"-24" MAX. LIQUIDTITE SHALL BE LEVEL BETWEEN SWITCH MACHINE AND JUNCTION BOX. TOP OF JUNCTION BOX SHALL NOT BE HIGHER THAN TOP OF SWITCH MACHINE
7. FLEX CONDUIT TO BE STEEL CORE
8. SET MACHINE SO THAT CONNECTING RODS ARE PERPENDICULAR TO TRACK
9. REFER TO SD-2000 SERIES DRAWINGS FOR TIE SPACING AND LENGTH

REV	DATE	BY	CHK	APP	DESCRIPTION	REV	DATE	BY	CHK	APP	DESCRIPTION

PENINSULA CORRIDOR JOINT POWERS BOARD

APPROVED BY:

ENGINEERING MANAGER

DEPUTY DIRECTOR OF ENGINEERING

1250 San Carlos Avenue
San Carlos, CA 94070

STANDARD DRAWINGS		CADD FILE NO.:
SIGNAL AND COMMUNICATION SWITCH APPARATUS M-23A SWITCH MACHINE LAYOUT NO. 10 OR NO. 14 CONCRETE TIES		SD-5308
		REV 0 DATE 093011
STANDARD NO.:		SD-5308