

POINT DETECTOR LUG

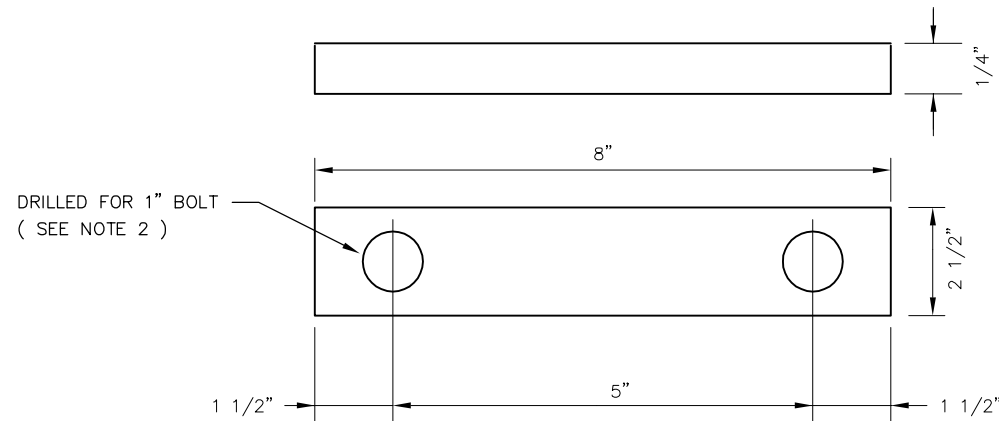
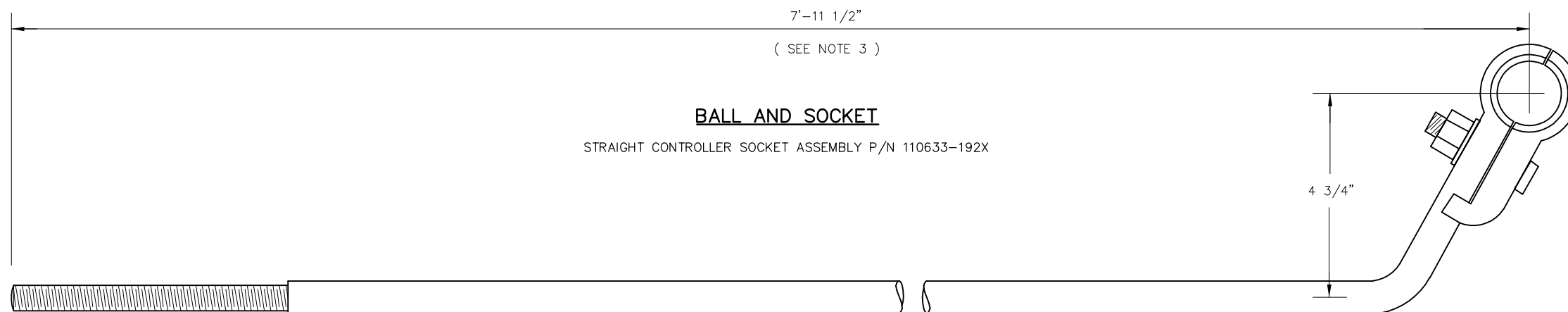


PLATE WASHER

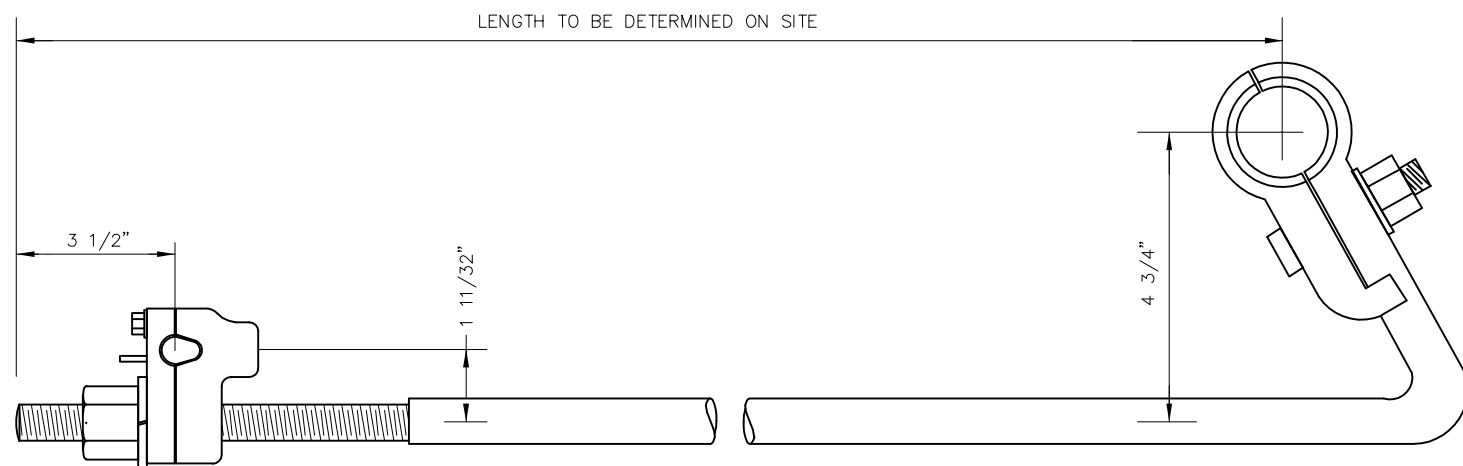


BALL AND SOCKET

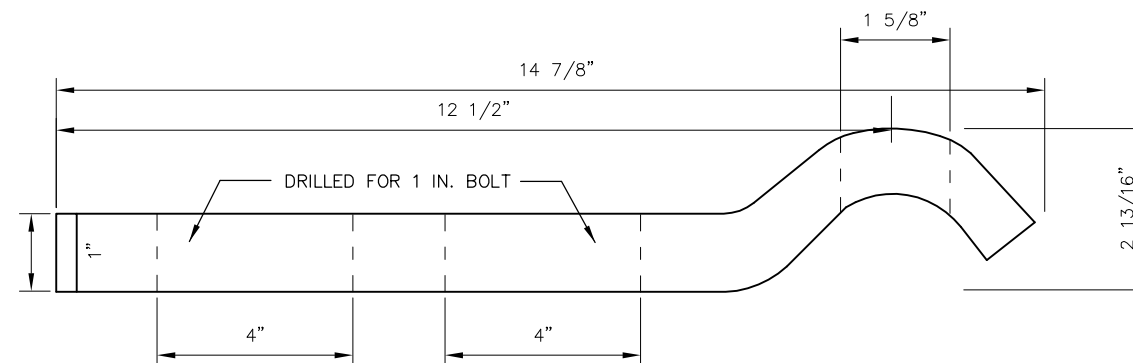
STRAIGHT CONTROLLER SOCKET ASSEMBLY P/N 110633-192X

NOTES:

- 1. ALL NUTS SHALL BE TIGHT AND SECURED WITH COTTER KEYS
- 2. DRILLED FOR 3/4" ON SOME INSTALLS
- 3. NOT USED ON NEW INSTALLATIONS



OPERATING RODS



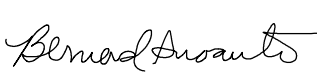

POINT LUG SWIVEL

FOR REFERENCE ONLY


REV	DATE	BY	CHK	APP	DESCRIPTION	REV	DATE	BY	CHK	APP	DESCRIPTION

PENINSULA CORRIDOR JOINT POWERS BOARD

APPROVED BY:

ENGINEERING MANAGER DEPUTY DIRECTOR OF ENGINEERING



1250 San Carlos Avenue
 San Carlos, CA 94070

STANDARD DRAWINGS

SIGNAL AND COMMUNICATION
 SWITCH APPARATUS
 SWITCH CIRCUIT CONTROLLER
 ROD & LUG - BALL & SOCKET

CADD FILE NO.:	SD-5303
REV	DATE
0	093011
SIGNAL	
STANDARD NO.:	SD-5303