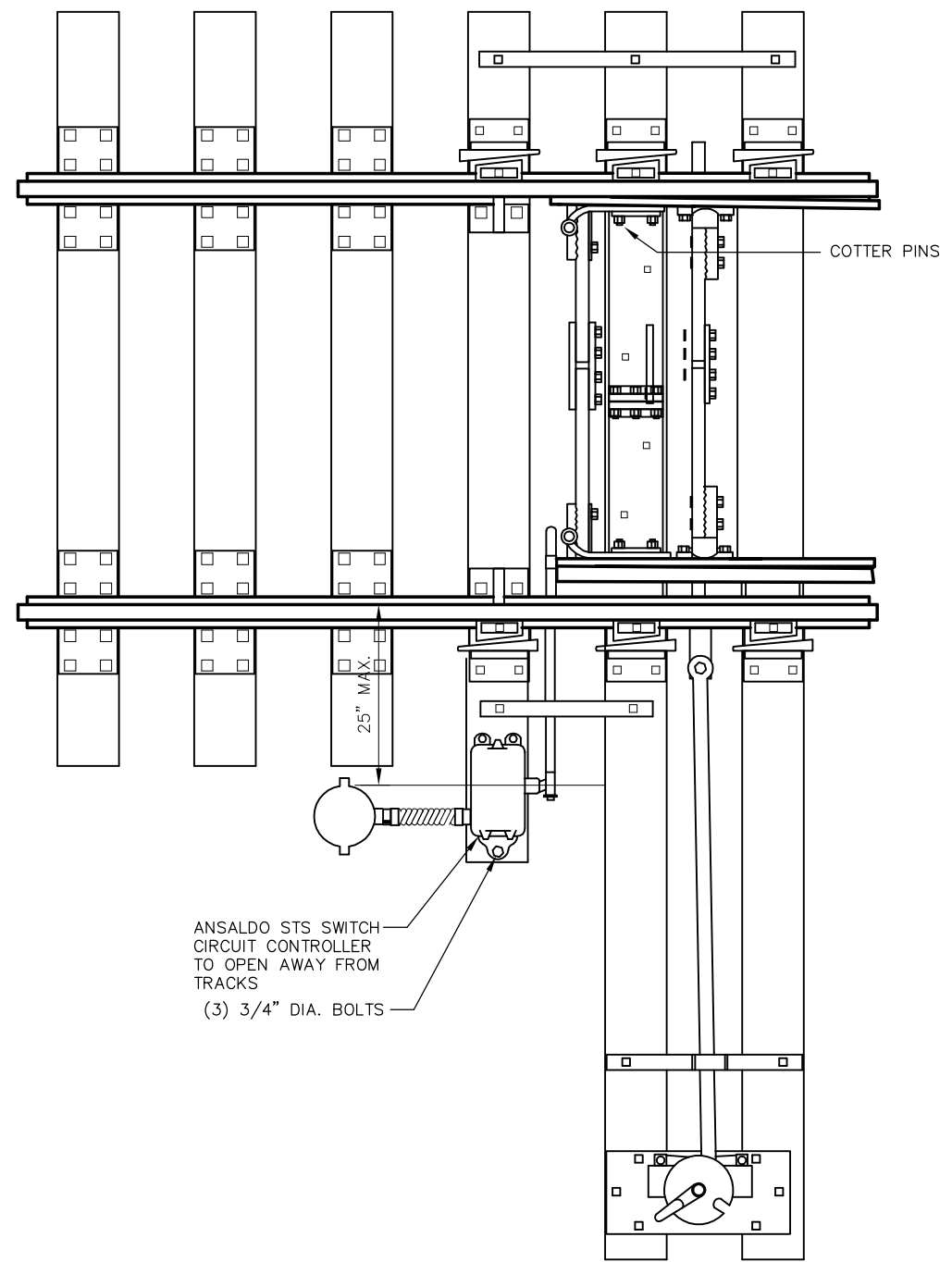


NEAR POINT NORMALLY CLOSED (PREFERRED)

NOTES:

1. TOP OF JUNCTION BOX LID SHALL BE LEVEL WITH TOP OF TIE
2. SWITCH CIRCUIT CONTROLLER SHALL BE EQUIPPED WITH RETURN INTERNAL OR EXTERNAL SPRING
3. U-5 BOX SHALL BE MOUNTED ON A 10' TIE & TO OPEN AWAY FROM TRACK
4. THE CENTER LINE OF THE CRANK SHAFT SHALL BE A MAXIMUM 25" FROM THE GAGE OF THE RAIL
5. FLEX CONDUIT BETWEEN JUNCTION BOX AND SWITCH CIRCUIT CONTROLLER SHALL BE 18" TO 24" AND CONTAIN A STEEL CORE
6. FLEX CONDUIT SHALL BE ROUTED SO IT DOES NOT INTERFERE WITH ROD MOVEMENT
7. SEE TRACK STANDARDS FOR PROPER TIE LENGTH & SPACING
8. LAYOUT BASED ON USE OF HIGH SWITCH STAND. MAKE ADJUSTMENTS BASED ON SWITCH STAND USED
9. WITH THE OPERATING CRANK POINTING VERTICALLY DOWNWARD AND THE SWITCH POINTS IN MID-POSITION, MARK THE LOCATION OF THE CONTROLLER BOX MOUNTING HOLES AND DRILL
10. PLACE 3/4" DIA. BOLTS THROUGH TIE. HEAD OF BOLT SHALL BE SECURED WITH BRIDGE WASHER AT BOTTOM OF TIE
11. INSTALL OPERATING ROD ON POINT LUG AND OPERATING CRANK WITH THE SWITCH POINTS IN MID-POSITION
12. CENTER SCREW JAW ON THREADED PORTION OF POINT DETECTOR ROD
13. ALLOW AMPLE CLEARANCE BETWEEN THE SIDE OF THE HEAD BLOCK TIE AND THE 3/4" OR 13/32" BALL STUD TO INSURE FREE MOVEMENT
14. ANSALDO STS, FORMERLY US&S



FAR POINT NORMALLY CLOSED

REV	DATE	BY	CHK	APP	DESCRIPTION

PENINSULA CORRIDOR JOINT POWERS BOARD

APPROVED BY:

ENGINEERING MANAGER

DEPUTY DIRECTOR OF ENGINEERING

1250 San Carlos Avenue
San Carlos, CA 94070

STANDARD DRAWINGS

**SIGNAL AND COMMUNICATION
SWITCH APPARATUS
CIRCUIT CONTROLLER PLACEMENT AT
HAND THROW SWITCHES**

CADD FILE NO.: SD-5302	
REV 0	DATE 093011
SIGNAL	
STANDARD NO.: SD-5302	