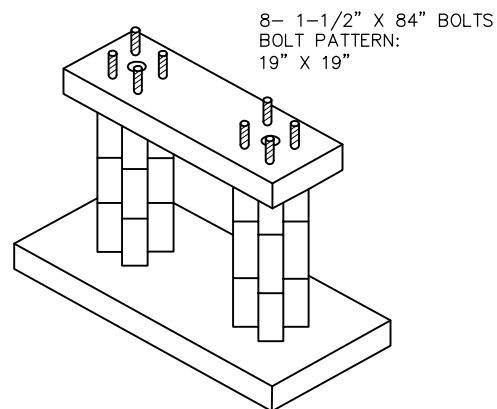
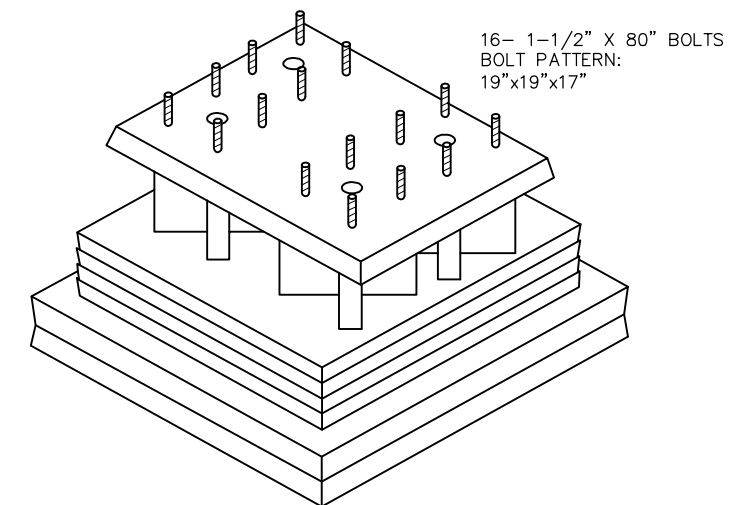


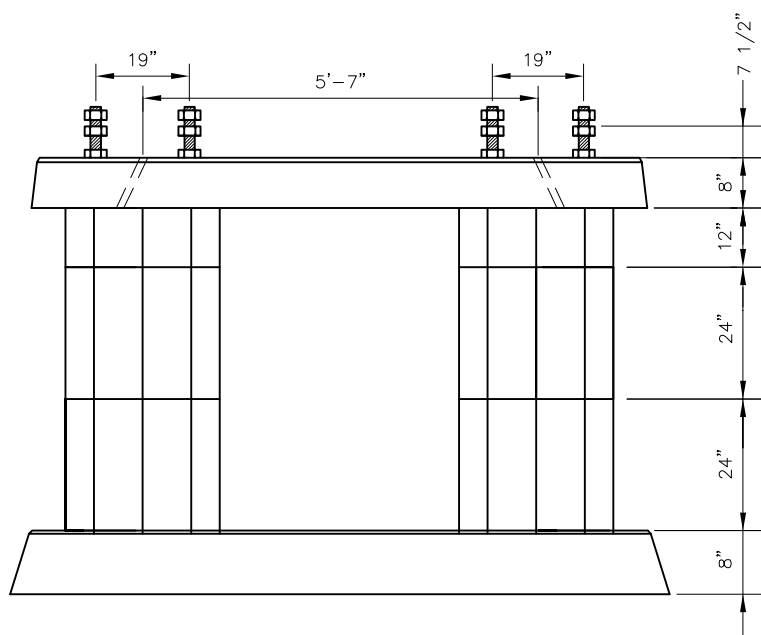
TOP VIEW



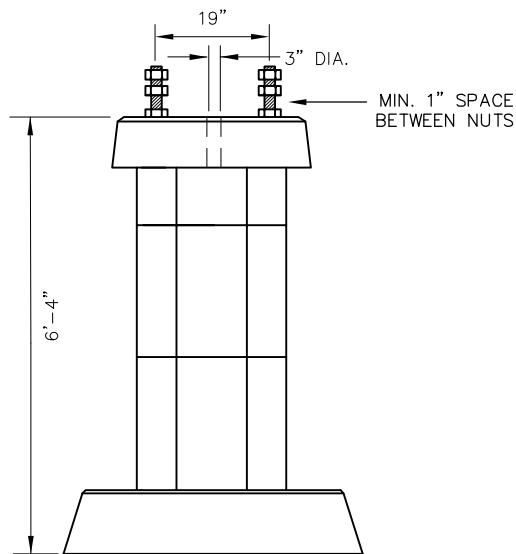
ISOMETRIC VIEW



ISOMETRIC VIEW

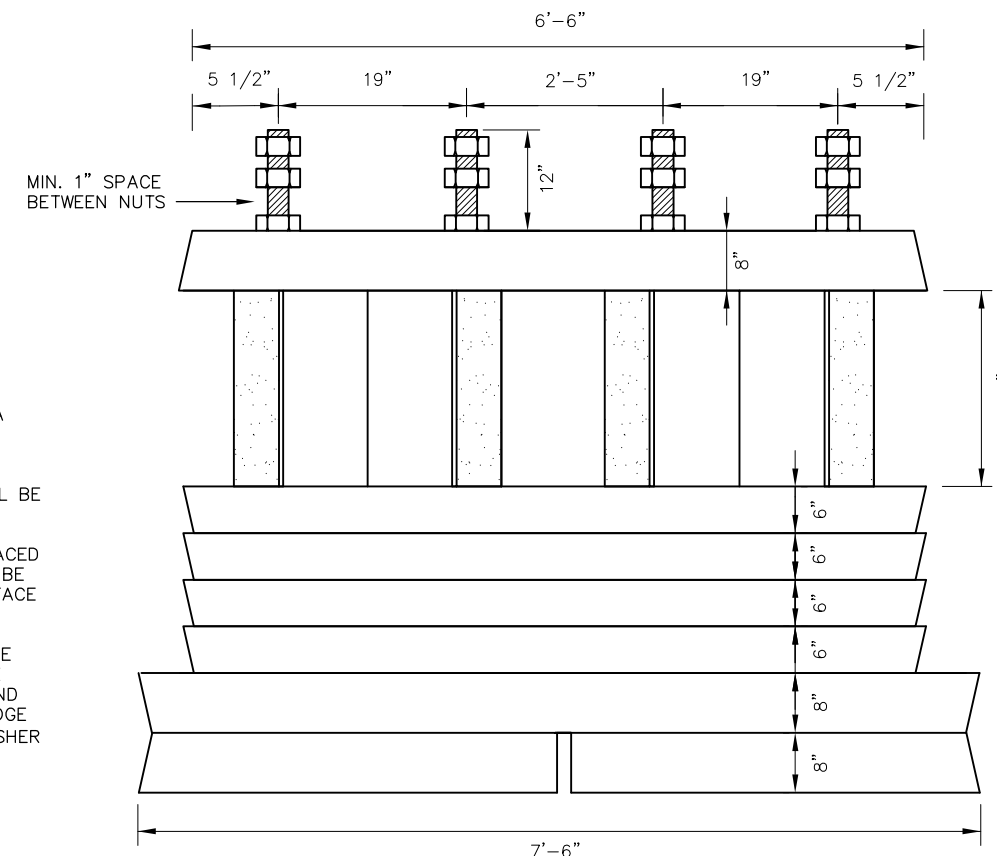


FRONT VIEW



SIDE VIEW

SIGNAL BRIDGE FOUNDATION




4-MAST WAYSIDE CANTILEVER 4'X4'

NOTES:

1. CONCRETE SHALL BE IN ACCORDANCE WITH AREMA SPECIFICATIONS FOR CONCRETE STRUCTURES AND FOUNDATIONS.
2. TOP AND BOTTOM SURFACES OF ALL PARTS SHALL BE FLAT AND PARALLEL.
3. STEEL PLATE AND NUT ASSEMBLIES SHALL BE PLACED SUCH THAT WHEN ASSEMBLED. THE BOLTS SHALL BE PERPENDICULAR TO THE BASE PLATE UPPER SURFACE WITHIN ONE DEGREE OF PERPENDICULAR
4. NUT ASSEMBLY SHALL BE ARRANGED SO THAT ONE NUT AND FLAT WASHER WILL BE USED TO SECURE ANCHOR BOLTS TO FOUNDATION. ANOTHER NUT AND FLAT WASHER SHALL BE USED TO LEVEL THE BRIDGE AND OR CANTILEVER MAST AND A THIRD NUT/WASHER COMBINATION TO SECURE MAST IN PLACE.
5. TAMP EXCAVATED HOLE, PROVIDE CURSHED ROCK PRIOR TO SETTING FOUNDATION.

REV	DATE	BY	CHK	APP	DESCRIPTION	REV	DATE	BY	CHK	APP	DESCRIPTION

PENINSULA CORRIDOR JOINT POWERS BOARD		STANDARD DRAWINGS	CADD FILE NO.: SD-5211
APPROVED BY: <i>Bernard Anagnostis</i> <i>Steph Chen</i>		SIGNAL AND COMMUNICATION SIGNAL APPARATUS TYPICAL BRIDGE & CANTILEVER FOUNDATION	REV 0 DATE 093011
ENGINEERING MANAGER	DEPUTY DIRECTOR OF ENGINEERING		SIGNAL
 1250 San Carlos Avenue San Carlos, CA 94070		STANDARD NO.: SD-5211	