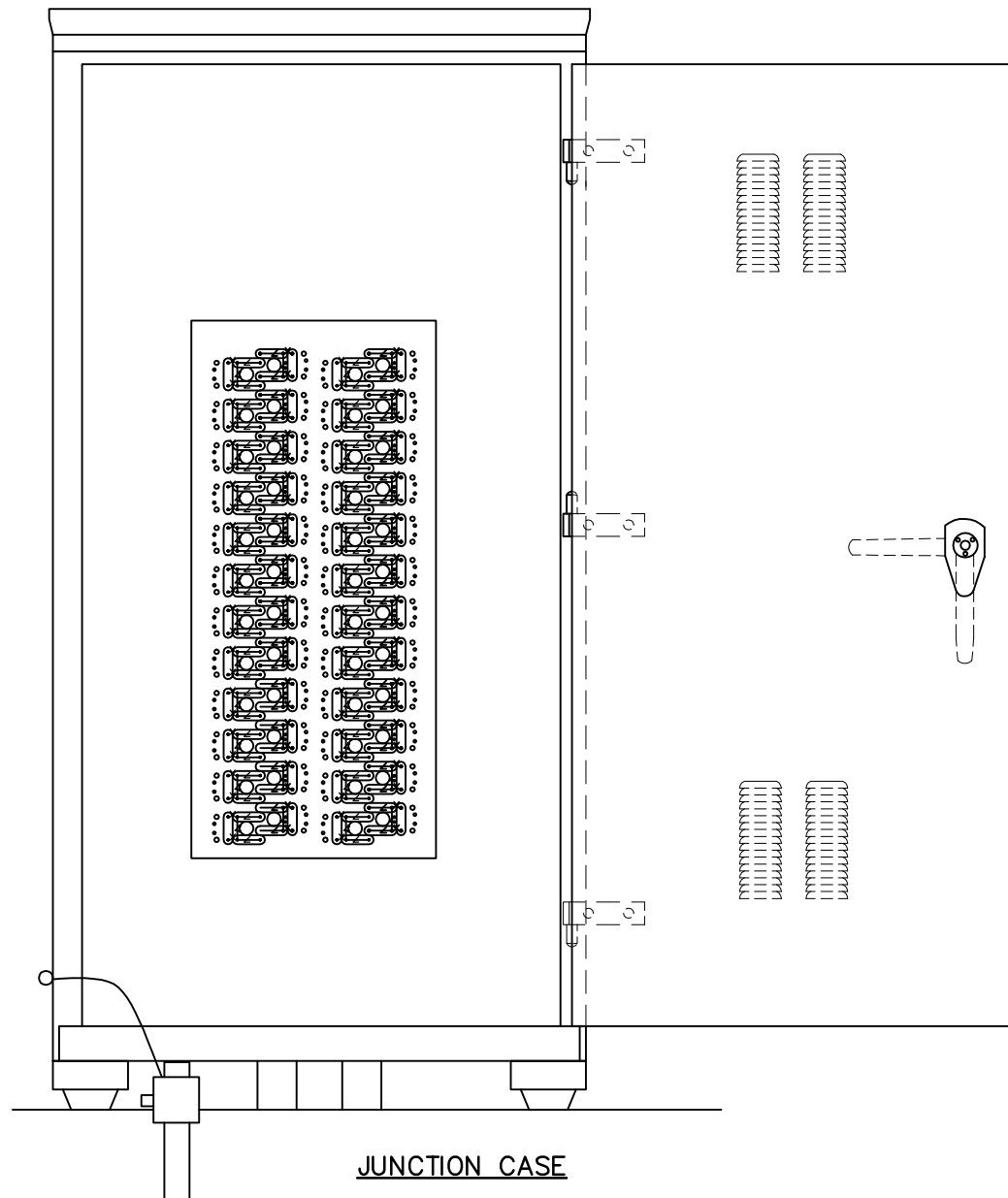


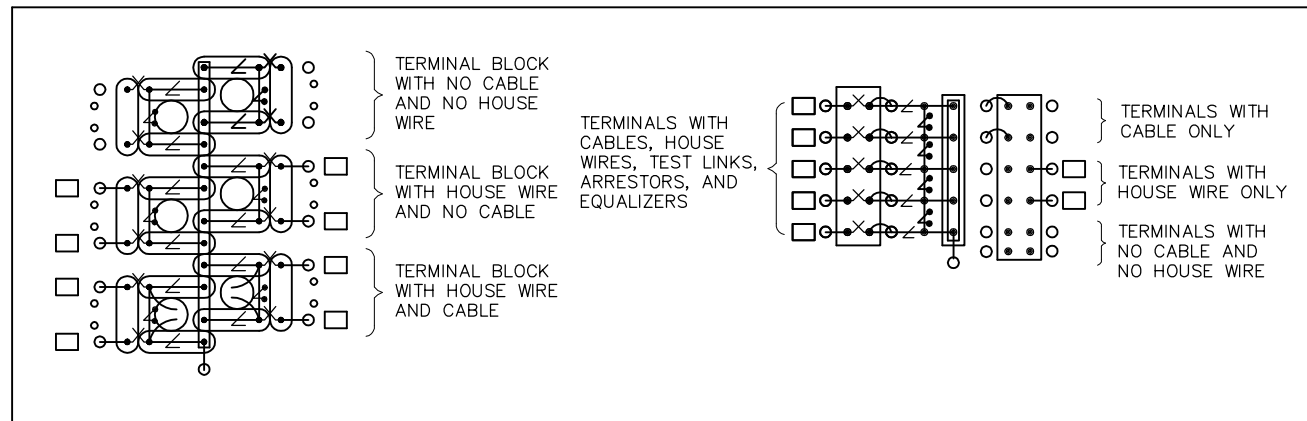
CASE DIMENSIONS
 41"W x 74 3/4"H x 24"D - OPTION A
 31"W x 61 3/4"H x 24"D - OPTION B



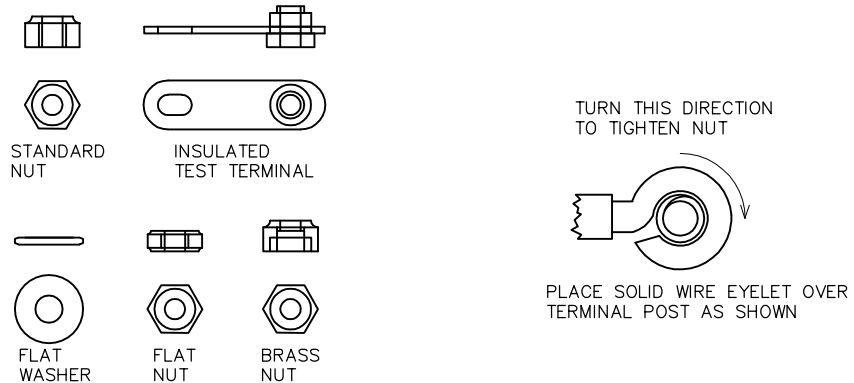
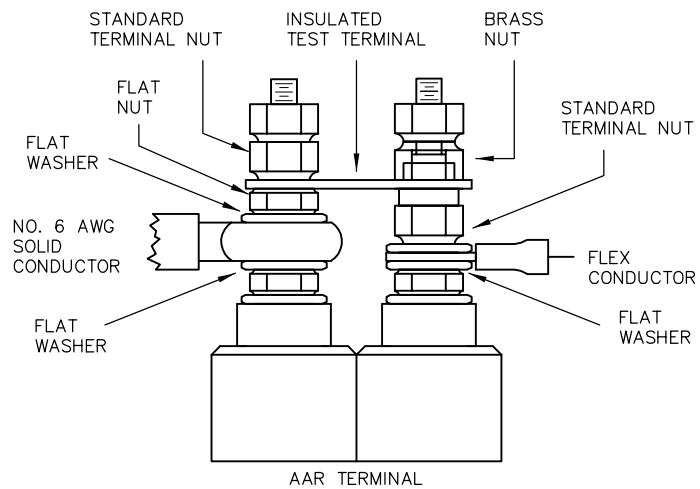
JUNCTION CASE

NOTE:
 INSTALL AND COMPACT A LAYER OF SMALL AGGREGATE STONE. MINIMUM 4' AROUND CASE.

TERMINAL BOARD DETAIL



NOTE:
 WHEN SMALLER SIZED SOLID CONDUCTORS ARE REQUIRED, FLAT NUT AND STANDARD NUTS WILL EXCHANGE POSITIONS.



NOTES:

- CASE OPTION SIZE SHALL BE DETERMINED BY THE ENGINEER. CASE SHALL BE EQUIPPED WITH A PLYWOOD BACKBOARD SETUP WITH A MINIMUM OF 48 - 2 POST TERMINALS ARRANGED AS OUTLINED IN THE TERMINAL BOARD DETAIL ABOVE AND DISPLAYED IN THE CASE.
- INSULATION ON SOLID CONDUCTORS SHALL BE REMOVED AND THE EXPOSED BARE WIRE THOROUGHLY CLEANED TO PROVIDE HIGH CONDUCTIVITY, TAKING CARE NOT TO NICK OR DAMAGE WIRE.
- THE BARE WIRE SHALL BE FORMED TO PRODUCE AN EYELET WHICH SHALL BE PLACED OVER THE BINDING POST. THE EYELET SHALL BE SIZED TO PROVIDE A TIGHT FITTING LOOP AROUND THE POST BUT LOOSE ENOUGH TO EASILY SLIDE ON AND OFF.
- A FLAT WASHER SHALL BE PLACED ON THE BINDING POST. THE EYELET SHALL THEN BE PLACED ON THE POST FOLLOWED BY ANOTHER FLAT WASHER. A NUT SHALL BE APPLIED AND SECURELY TIGHTENED WITH A TERMINAL WRENCH.
- INSULATION ON FLEX CONDUCTORS SHALL BE REMOVED USING A SPRING LOADED STRIPPING TOOL RECOMMENDED BY THE MANUFACTURER OF THE WIRE AND THE EXPOSED BARE WIRE THOROUGHLY CLEANED TO PROVIDE HIGH CONDUCTIVITY.
- EYELET SHALL BE ATTACHED TO FLEX CONDUCTORS. ONLY CALTRAIN APPROVED EYELET SHALL BE UTILIZED. A COMPRESSION TOOL RECOMMENDED BY THE MANUFACTURER OF THE EYELET SHALL BE USED TO ATTACH THE EYELET.
- A FLAT WASHER SHALL BE PLACED ON THE BINDING POST. THE EYELET SHALL THEN BE PLACED ON THE POST FOLLOWED BY ANOTHER FLAT WASHER. IF APPLICABLE THE SECOND EYELET SHALL BE PLACED ON THE POST FOLLOWED BY A FLAT WASHER. A NUT SHALL BE APPLIED AND SECURELY TIGHTENED WITH A TERMINAL WRENCH.
- AN INSULATED TEST LINK SHALL BE INSTALLED ONCE THE SOLID CONDUCTORS AND EYELETS ARE ATTACHED. THE TEST LINK SHALL BE SECURED USING ONE FLAT AND ONE CROWN NUT AND THE CIRCUIT "CLOSED" BY APPLYING THE BRASS NUT.
- FLEX CONDUCTORS SHALL BE TAGGED USING CALTRAIN APPROVED TAGS.
- WHERE POSSIBLE, SPARE SOLID CABLE CONDUCTORS SHALL BE ATTACHED TO SPARE BINDING POSTS. NO MORE THAN ONE SOLID CONDUCTOR SHALL BE SECURED TO A POST.

PENINSULA CORRIDOR JOINT POWERS BOARD

STANDARD DRAWINGS

REV	DATE	BY	CHK	APP	DESCRIPTION

APPROVED BY:
Bernard Anagnostis ENGINEERING MANAGER
Stefan Chou DEPUTY DIRECTOR OF ENGINEERING



SIGNAL AND COMMUNICATION
GENERAL SIGNAL
CABLE JUNCTION CASE

CADD FILE NO.: SD-5121	
REV 0	DATE 093011
SIGNAL	
STANDARD NO.: SD-5121	