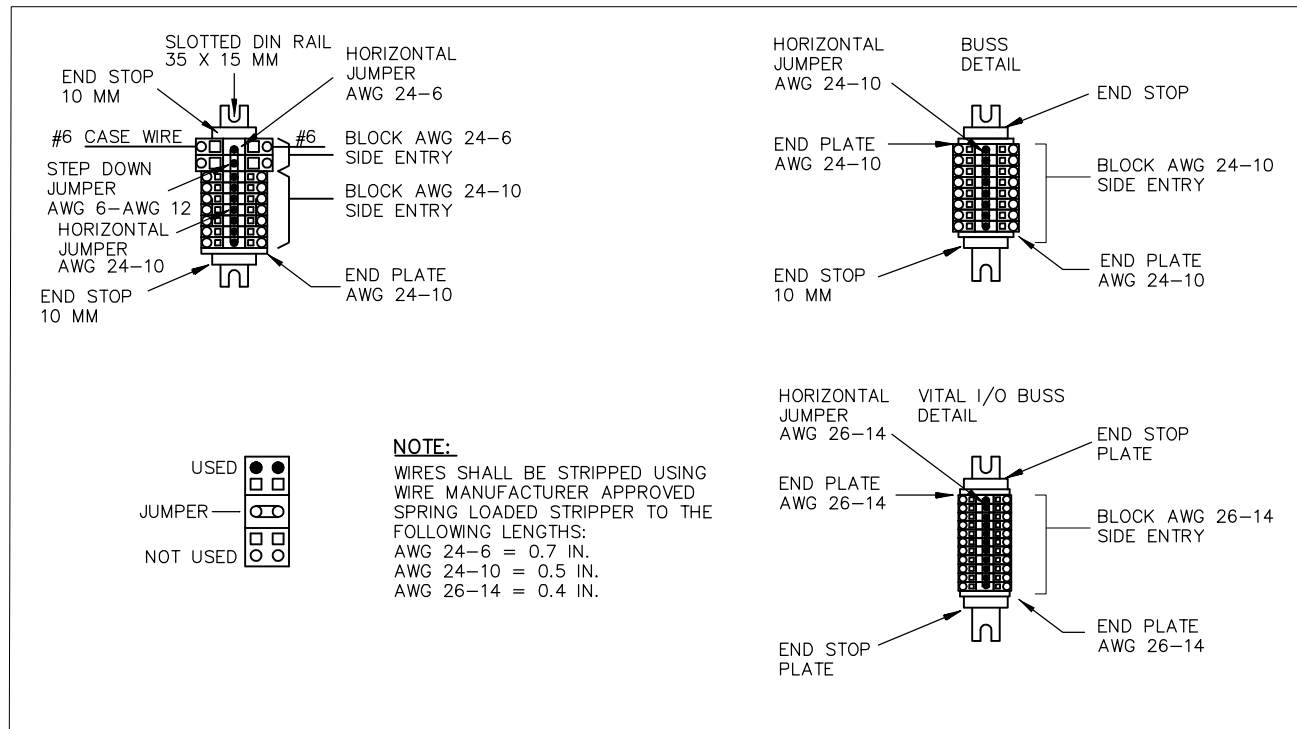
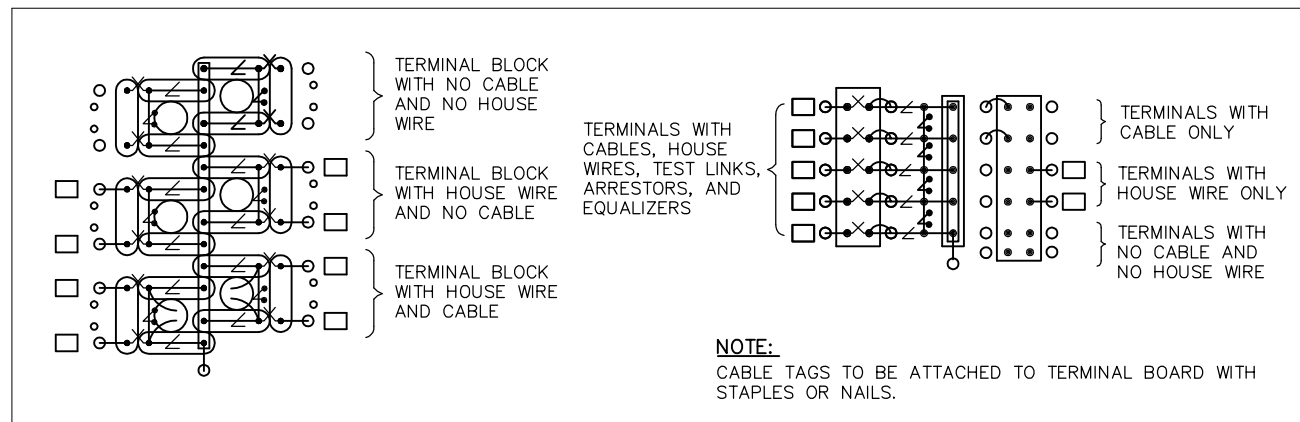


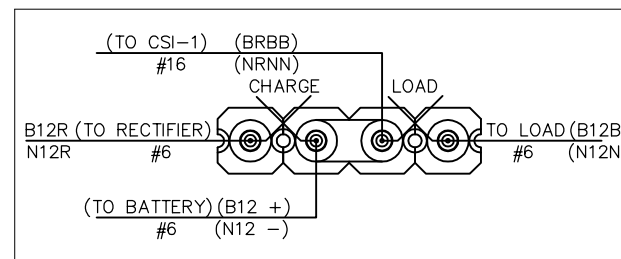
SCREWLESS CAGE CLAMP TERMINAL DETAIL



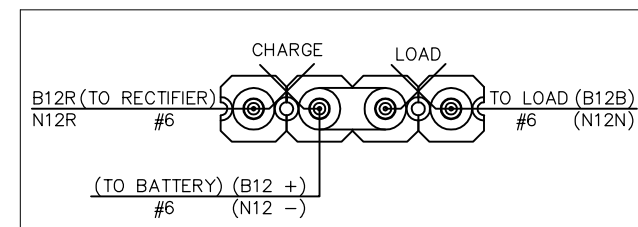
TERMINAL BOARD DETAIL



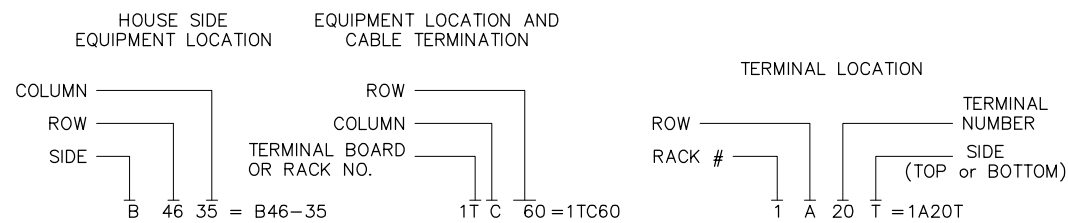
DETAIL A



DETAIL B

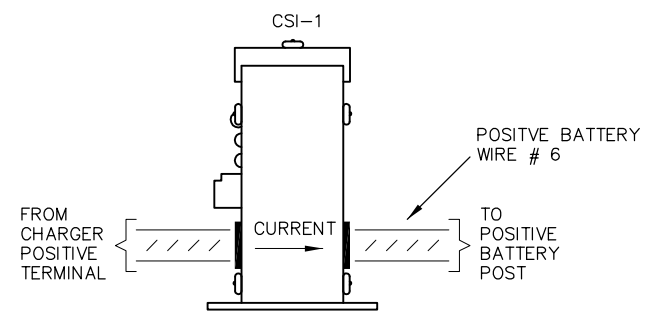
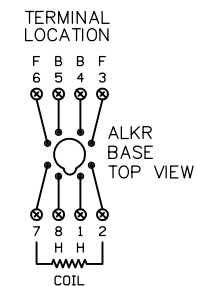


LOCATION LEGENDS



NOTES:

- ∠ = CLEARVIEW ARRESTOR
- ⚡ = HEAVY DUTY EQUALIZER
- ⊗ = INSULATED TEST TERMINAL
- ▣ = TERMINAL BLOCK
- ◻ = TERMINAL BLOCK
- = DRILL 1/2-INCH HOLE AND FINISH EDGES FOR CASE WIRE AND CABLE CONDUCTORS
- = DRILL 1-1/4 INCH HOLE AND FINISH EDGES FOR TRACK WIRE
- ⊗ = ADJUSTABLE RESISTANCE
- ⊗ = TWISTED WIRE
- ⊗ = TEST POINTS FOR XGNDS.
- ⊗ = COIL PER I-324
- ⊗ = DV4 OR EQUAL



NOTE:

1. UNLESS NOTED OTHERWISE ON SIGNAL DRAWINGS, WIRES SHALL BE #14 AWG FLEX. ALL GROUND WIRES SHALL BE #6 AWG SOFT DRAWN COPPER. WIRES TO BATTERIES SHALL BE #6 AWG FLEX CASE WIRE

PENINSULA CORRIDOR JOINT POWERS BOARD

STANDARD DRAWINGS

REV	DATE	BY	CHK	APP	DESCRIPTION

APPROVED BY:

Bernard Anagnostis ENGINEERING MANAGER

Stephen Chen DEPUTY DIRECTOR OF ENGINEERING

1250 San Carlos Avenue
San Carlos, CA 94070

CADD FILE NO.: SD-5119	
REV 0	DATE 093011
SIGNAL	
STANDARD NO.: SD-5119	

SIGNAL AND COMMUNICATION
 GENERAL SIGNAL
 WAGO SCREWLESS CAGE CLAMP
 BOARD WIRING DETAILS