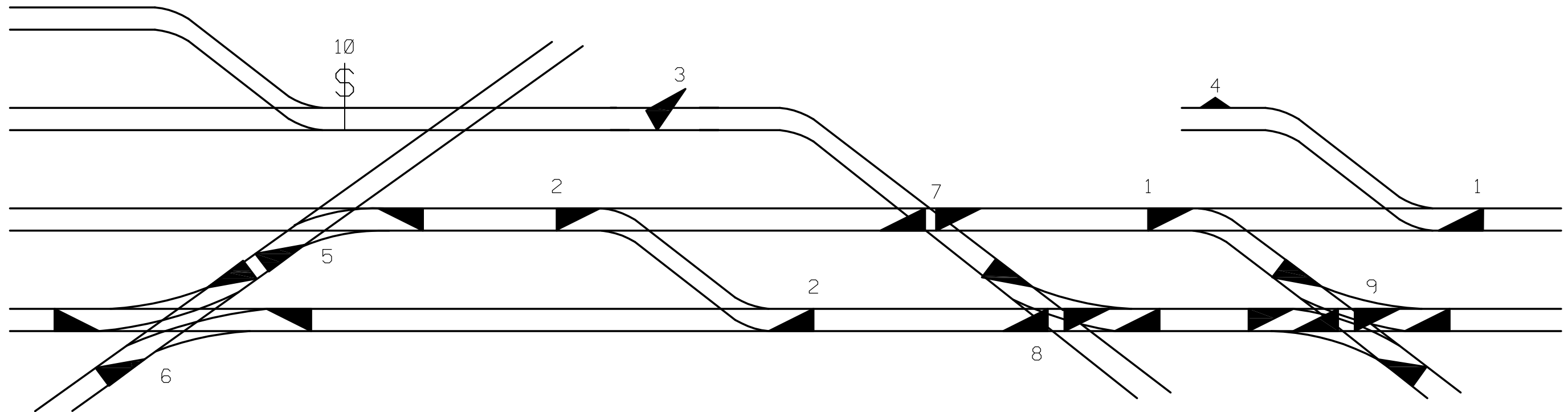
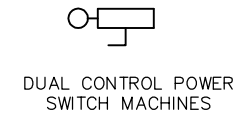
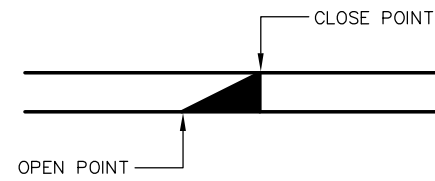
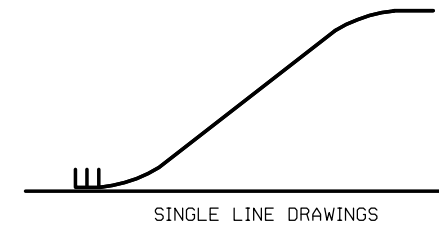
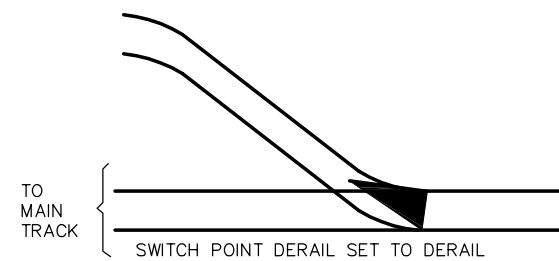
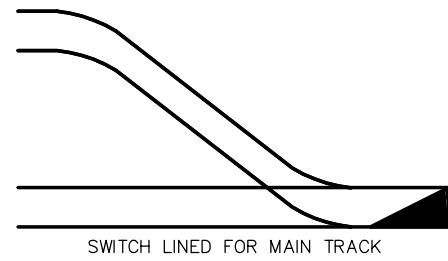


INTERLOCKED SWITCHES AND DERAILS



LINE PLAN

NOTES:

- | | |
|---------------------------------------|--|
| 1. SINGLE TURNOUT | 6. DOUBLE SLIP SWITCH WITH RIGID FROG |
| 2. SINGLE CROSSOVER | 7. MOVEABLE POINT CROSSING FROG (M.P.F.) |
| 3. DERAIL POINT TYPE (OLD) | 8. SINGLE SLIP SWITCH WITH M.P.F. |
| 4. DERAIL LIFT TYPE | 9. DOUBLE SLIP SWITCH WITH M.P.F. |
| 5. SINGLE SLIP SWITCH WITH RIGID FROG | 10. SPRING SWITCH |


REV	DATE	BY	CHK	APP	DESCRIPTION

PENINSULA CORRIDOR JOINT POWERS BOARD

APPROVED BY:

Bernard Anagnostis *Steph Chen*

ENGINEERING MANAGER DEPUTY DIRECTOR OF ENGINEERING



1250 San Carlos Avenue
San Carlos, CA 94070

STANDARD DRAWINGS

SIGNAL AND COMMUNICATION
GENERAL SIGNAL

SWITCH & DERAIL SYMBOLS

CADD FILE NO.: SD-5106	
REV 0	DATE 093011
SIGNAL	
STANDARD NO.: SD-5106	